




Anti-Cdk2 antibody ab235941

8 References **5 图像**

概述

产品名称	Anti-Cdk2抗体
描述	兔多克隆抗体to Cdk2
宿主	Rabbit
经测试应用	适用于: WB, IP, IHC-P, ICC/IF
种属反应性	与反应: Human 预测可用于: Mouse, Rat, Cow, Chinese hamster, Syrian hamster 
免疫原	Recombinant full length protein corresponding to Human CDK2 aa 1 to the C-terminus. Database link: P24941  Run BLAST with  Run BLAST with
阳性对照	WB: K562, HEK-293, HeLa, Jurkat and HepG2 whole cell lysates. IHC-P: Human tonsil and colon cancer tissues. ICC/IF: HepG2 cells. IP: HeLa whole cell lysate.
常规说明	<p>The Life Science industry has been in the grips of a reproducibility crisis for a number of years. Abcam is leading the way in addressing this with our range of recombinant monoclonal antibodies and knockout edited cell lines for gold-standard validation. Please check that this product meets your needs before purchasing.</p> <p>If you have any questions, special requirements or concerns, please send us an inquiry and/or contact our Support team ahead of purchase. Recommended alternatives for this product can be found below, along with publications, customer reviews and Q&As</p>

性能

形式	Liquid
存放说明	Shipped at 4°C. Store at +4°C short term (1-2 weeks). Upon delivery aliquot. Store at -20°C long term. Avoid freeze / thaw cycle.
存储溶液	pH: 7.40 Preservative: 0.03% Proclin 300 Constituents: PBS, 50% Glycerol (glycerin, glycerine)
纯度	Protein G purified
纯化说明	Purity >95%.
克隆	多克隆

同种型IgG

应用

The Abpromise guarantee **Abpromise™**承诺保证使用ab235941于以下的经测试应用
“应用说明”部分 下显示的仅为推荐的起始稀释度;实际最佳的稀释度/浓度应由使用者检定。

应用	Ab评论	说明
WB		1/1000 - 1/5000. Predicted molecular weight: 34 kDa.
IP		1/200 - 1/2000.
IHC-P		1/500 - 1/1000.
ICC/IF		1/50 - 1/500.

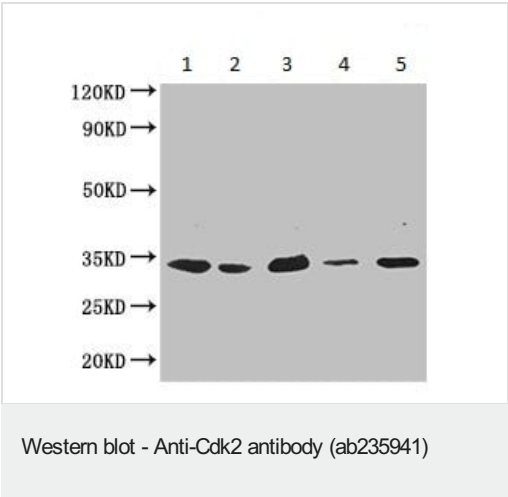
靶标

功能Involved in the control of the cell cycle. Interacts with cyclins A, B1, B3, D, or E. Activity of CDK2 is maximal during S phase and G2.

序列相似性Belongs to the protein kinase superfamily. CMGC Ser/Thr protein kinase family. CDC2/CDKX subfamily.

Contains 1 protein kinase domain.

图片

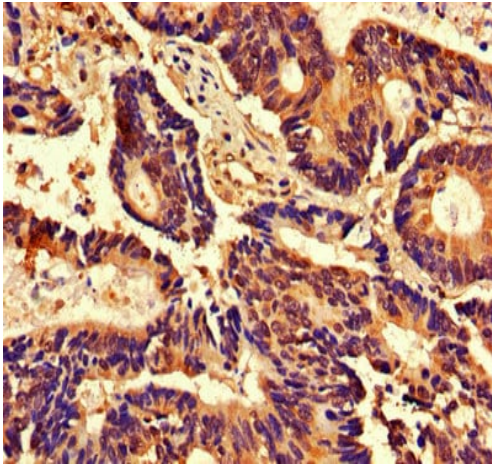


All lanes : Anti-Cdk2 antibody (ab235941) at 1/1000 dilution

- Lane 1 :** K562 (human chronic myelogenous leukemia cell line from bone marrow) whole cell lysate
- Lane 2 :** HEK-293 (human epithelial cell line from embryonic kidney) whole cell lysate
- Lane 3 :** HeLa (human epithelial cell line from cervix adenocarcinoma) whole cell lysate
- Lane 4 :** Jurkat (human T cell leukemia cell line from peripheral blood) whole cell lysate
- Lane 5 :** HepG2 (human liver hepatocellular carcinoma cell line) whole cell lysate

Secondary
All lanes : Goat polyclonal to rabbit IgG at 1/50000 dilution

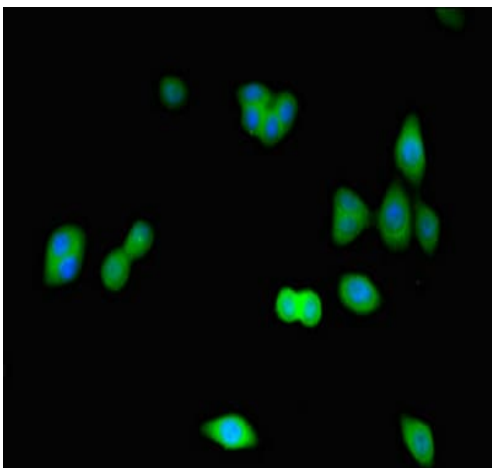
Predicted band size: 34 kDa



Immunohistochemistry (Formalin/PFA-fixed paraffin-embedded sections) - Anti-Cdk2 antibody (ab235941)

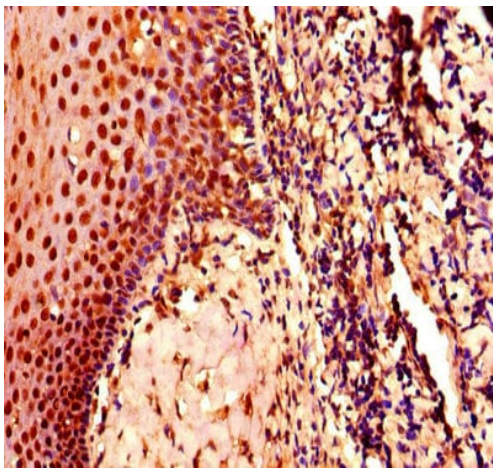
Paraffin-embedded human colon cancer tissue stained for Cdk2 using ab235941 at 1/800 dilution in immunohistochemical analysis.

After dewaxing and hydration, antigen retrieval was mediated by high pressure in a citrate buffer (pH 6.0). Section was blocked with 10% normal goat serum for 30 minutes at room temperature. Then primary antibody (1% BSA) was incubated at 4°C overnight. The primary is detected by a biotinylated secondary antibody and visualized using an HRP conjugated SP system.



Immunocytochemistry/ Immunofluorescence - Anti-Cdk2 antibody (ab235941)

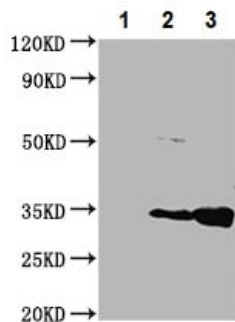
HepG2 (human liver hepatocellular carcinoma cell line) cells labeling Cdk2 using ab235941 at 1/100 dilution in ICC/IF, followed by Alexa Fluor 488[®] conjugated Goat Anti-Rabbit IgG (H+L).



Immunohistochemistry (Formalin/PFA-fixed paraffin-embedded sections) - Anti-Cdk2 antibody (ab235941)

Paraffin-embedded human tonsil tissue stained for Cdk2 using ab235941 at 1/800 dilution in immunohistochemical analysis.

After dewaxing and hydration, antigen retrieval was mediated by high pressure in a citrate buffer (pH 6.0). Section was blocked with 10% normal goat serum for 30 minutes at room temperature. Then primary antibody (1% BSA) was incubated at 4°C overnight. The primary is detected by a biotinylated secondary antibody and visualized using an HRP conjugated SP system.



Immunoprecipitation - Anti-Cdk2 antibody (ab235941)

Cdk2 was immunoprecipitated from 0.5 mg HeLa (human epithelial cell line from cervix adenocarcinoma) whole cell extract with ab235941 at 1/200 dilution.

Lane 1: Control rabbit IgG IP (1 µg) in HeLa whole cell lysate.

Lane 2: ab235941 IP in HeLa whole cell extract.

Lane 3: HeLa whole cell lysate 10 µg (Input).

For western blotting, an HRP-conjugated light chain specific antibody was used as the secondary antibody at 1/50000 dilution.

Please note: All products are "FOR RESEARCH USE ONLY. NOT FOR USE IN DIAGNOSTIC PROCEDURES"

Our Abpromise to you: Quality guaranteed and expert technical support

- Replacement or refund for products not performing as stated on the datasheet
- Valid for 12 months from date of delivery
- Response to your inquiry within 24 hours
- We provide support in Chinese, English, French, German, Japanese and Spanish
- Extensive multi-media technical resources to help you
- We investigate all quality concerns to ensure our products perform to the highest standards

If the product does not perform as described on this datasheet, we will offer a refund or replacement. For full details of the Abpromise, please visit <https://www.abcam.cn/abpromise> or contact our technical team.

Terms and conditions

- Guarantee only valid for products bought direct from Abcam or one of our authorized distributors