

### Anti-CDK1 antibody [EPR165] ab133327

**重组** RabMAb

★★★★★ **3 Abreviews** **74 References** **6 图像**

#### 概述

产品名称	Anti-CDK1抗体[EPR165]
描述	兔单克隆抗体[EPR165] to CDK1
宿主	Rabbit
特异性	We have preliminary internal testing data to indicate this antibody doesn't react with CDK2, CDK3 and CDK5. Please contact us for more information.
经测试应用	<b>适用于:</b> Flow Cyt (Intra), ICC/IF, WB, IP, IHC-P
种属反应性	<b>与反应:</b> Human
免疫原	Synthetic peptide within Human CDK1 aa 250 to the C-terminus (C terminal). The exact sequence is proprietary. Database link: <b>P06493</b>
阳性对照	WB: HeLa, Saos-2, Namalwa, and Jurkat whole cell lysate ( <b>ab7899</b> ). IHC-P: Human tonsil tissue. IP: HeLa. Flow Cyt: Jurkat cells.
常规说明	This product is a recombinant monoclonal antibody, which offers several advantages including: <ul style="list-style-type: none"> <li>- High batch-to-batch consistency and reproducibility</li> <li>- Improved sensitivity and specificity</li> <li>- Long-term security of supply</li> <li>- Animal-free production</li> </ul> For more information <b>see here</b> . Our RabMAb <sup>®</sup> technology is a patented hybridoma-based technology for making rabbit monoclonal antibodies. For details on our patents, please refer to <b>RabMAb<sup>®</sup> patents</b> . Mouse, Rat: We have preliminary internal testing data to indicate this antibody may not react with these species. Please contact us for more information.

#### 性能

形式	Liquid
存放说明	Shipped at 4°C. Store at -20°C. Stable for 12 months at -20°C.
存储溶液	pH: 7.2 Preservative: 0.01% Sodium azide Constituents: 59% PBS, 40% Glycerol (glycerin, glycerine), 0.5% BSA

纯度	Protein A purified
克隆	单克隆
克隆编号	EPR165
同种型	IgG

应用

The Abpromise guarantee      **Abpromise™**承诺保证使用ab133327于以下的经测试应用

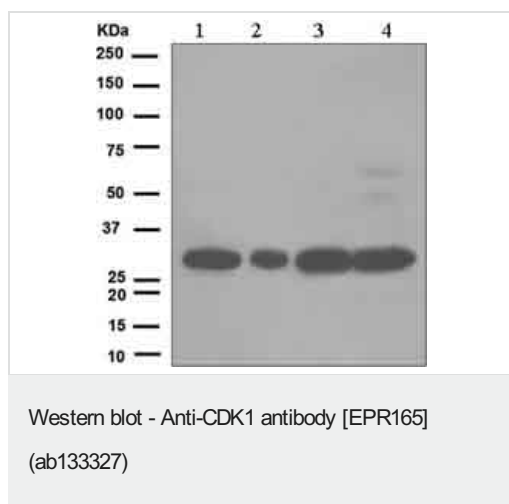
“应用说明”部分 下显示的仅为推荐的起始稀释度;实际最佳的稀释度/浓度应由使用者检定。

应用	Ab评论	说明
Flow Cyt (Intra)		1/130. <b>ab172730</b> - Rabbit monoclonal IgG, is suitable for use as an isotype control with this antibody.
ICC/IF	★★★★★ (1)	1/100 - 1/250.
WB	★★★★★ (2)	1/10000 - 1/50000. Predicted molecular weight: 34 kDa.
IP		1/10 - 1/100.
IHC-P		1/250 - 1/500. Perform heat mediated antigen retrieval with citrate buffer pH 6 before commencing with IHC staining protocol.

靶标

功能	Plays a key role in the control of the eukaryotic cell cycle. It is required in higher cells for entry into S-phase and mitosis. p34 is a component of the kinase complex that phosphorylates the repetitive C-terminus of RNA polymerase II.
组织特异性	Isoform 2 is found in breast cancer tissues.
序列相似性	Belongs to the protein kinase superfamily. CMGC Ser/Thr protein kinase family. CDC2/CDKX subfamily. Contains 1 protein kinase domain.
细胞定位	Nucleus.
形式	CDK1 can be located to the Nucleus, cytoplasm and Mithochondria. It's cytoplasmic during interphase and reversibly translocated from cytoplasm to the nucleus when phosphorylated before G2-M transition when associated with cyclin-B1. Accumulates in mitochondria in G2-arrested cells upon DNA-damage.

图片



**All lanes :** Anti-CDK1 antibody [EPR165] (ab133327) at 1/10000 dilution

**Lane 1 :** HeLa cell lysate

**Lane 2 :** Saos-2 cell lysate

**Lane 3 :** Namalwa cell lysate

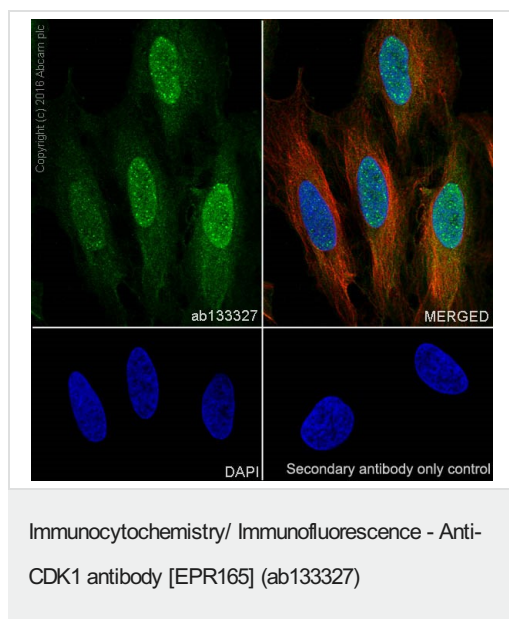
**Lane 4 :** Jurkat cell lysate

Lysates/proteins at 10 µg per lane.

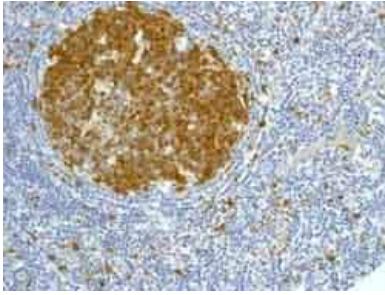
### Secondary

**All lanes :** HRP labelled goat anti-rabbit at 1/2000 dilution

**Predicted band size:** 34 kDa



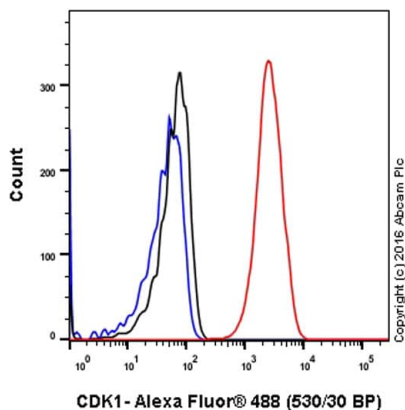
Immunocytochemistry/ Immunofluorescence analysis of HeLa (Human epithelial cell line from cervix adenocarcinoma) cells labeling CDK1 with ab133327 at 1/500 dilution (0.6 µg/ml). Cells were fixed in 4% paraformaldehyde and permeabilized with 0.1% tritonX-100. Cells were counterstained with **ab195889**, an anti-alpha Tubulin antibody [DM1A] - Microtubule Marker (Alexa Fluor® 594) at 1/200 (2.5 µg/ml). **ab150077**, a Goat anti-rabbit IgG (Alexa Fluor® 488) was used as the secondary antibody at 1/1000 dilution (2 µg/ml). DAPI nuclear counterstain. Confocal image showing strong nuclear and weakly cytoplasmic staining on HeLa cell line.



Immunohistochemistry (Formalin/PFA-fixed paraffin-embedded sections) - Anti-CDK1 antibody [EPR165] (ab133327)

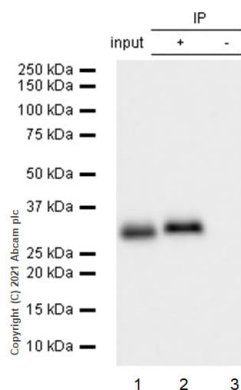
Immunohistochemical analysis of paraffin-embedded human tonsil tissue labelling CDK1 with ab133327 at 1/250 dilution.

Perform heat mediated antigen retrieval with citrate buffer pH 6 before commencing with IHC staining protocol.



Flow Cytometry (Intracellular) - Anti-CDK1 antibody [EPR165] (ab133327)

Intracellular Flow Cytometry analysis of Jurkat (human acute T cell leukemia) cells labeling CDK1 with purified ab133327 at 1/130 dilution (10ug/mL) (red). Cells were fixed with 4% paraformaldehyde and permeabilised with 90% methanol. A Goat anti rabbit IgG (Alexa Fluor®488) (1/2000 dilution) was used as the secondary antibody. Rabbit monoclonal IgG (Black) was used as the isotype control, cells without incubation with primary antibody and secondary antibody (Blue) was used as the unlabeled control.



Immunoprecipitation - Anti-CDK1 antibody [EPR165] (ab133327)

CDK1 was immunoprecipitated from 0.35 mg HeLa (Human cervix adenocarcinoma epithelial cell) whole cell lysate 10 µg with 133327 at 1/20 dilution (2µg) . VeriBlot for IP Detection Reagent (HRP) ([ab131366](#)) was used at 1/5000 dilution.

Lane 1: HeLa (Human cervix adenocarcinoma epithelial cell) whole cell lysate 10 µg

Lane 2: ab133327 IP in HeLa whole cell lysate

Lane 3: Rabbit monoclonal IgG ([ab172730](#)) instead of ab133327 in HeLa whole cell lysate

Blocking and dilution buffer and concentration: 5% NFDM/TBST.

### Why choose a recombinant antibody?



**Research with confidence**  
Consistent and reproducible results



**Long-term and scalable supply**  
Recombinant technology



**Success from the first experiment**  
Confirmed specificity



**Ethical standards compliant**  
Animal-free production

Anti-CDK1 antibody [EPR165] (ab133327)

**Please note:** All products are "FOR RESEARCH USE ONLY. NOT FOR USE IN DIAGNOSTIC PROCEDURES"

### Our Abpromise to you: Quality guaranteed and expert technical support

---

- Replacement or refund for products not performing as stated on the datasheet
- Valid for 12 months from date of delivery
- Response to your inquiry within 24 hours
- We provide support in Chinese, English, French, German, Japanese and Spanish
- Extensive multi-media technical resources to help you
- We investigate all quality concerns to ensure our products perform to the highest standards

If the product does not perform as described on this datasheet, we will offer a refund or replacement. For full details of the Abpromise, please visit <https://www.abcam.cn/abpromise> or contact our technical team.

### Terms and conditions

---

- Guarantee only valid for products bought direct from Abcam or one of our authorized distributors