

Anti-CD80 antibody [EPR1157(2)] ab134120

敲除验证
重组
RabMAb

★★★★☆
[2 Abreviews](#)
[22 References](#)
[7 图像](#)

概述

产品名称	Anti-CD80抗体[EPR1157(2)]
描述	兔单克隆抗体[EPR1157(2)] to CD80
宿主	Rabbit
经测试应用	适用于: Flow Cyt (Intra), WB, IHC-P 不适用于: ICC/IF
种属反应性	与反应: Human
免疫原	Synthetic peptide. This information is proprietary to Abcam and/or its suppliers.
阳性对照	WB: Raji and Ramos cell lysates. IHC-P: Human tonsil tissue. Flow Cyt (intra): Raji cells.
常规说明	<p>This product is a recombinant monoclonal antibody, which offers several advantages including:</p> <ul style="list-style-type: none"> - High batch-to-batch consistency and reproducibility - Improved sensitivity and specificity - Long-term security of supply - Animal-free production <p>For more information see here.</p> <p>Our RabMAb[®] technology is a patented hybridoma-based technology for making rabbit monoclonal antibodies. For details on our patents, please refer to RabMAb[®] patents.</p> <p>Mouse, Rat: We have preliminary internal testing data to indicate this antibody may not react with these species. Please contact us for more information.</p>

性能

形式	Liquid
存放说明	Shipped at 4°C. Store at +4°C short term (1-2 weeks). Upon delivery aliquot. Store at -20°C. Stable for 12 months at -20°C.
存储溶液	pH: 7.2 Preservative: 0.01% Sodium azide Constituents: 40% Glycerol (glycerin, glycerine), 0.05% BSA, 59% PBS
纯度	Protein A purified
克隆	单克隆

克隆编号EPR1157(2)

同种型IgG

应用

The Abpromise guarantee **Abpromise™**承诺保证使用ab134120于以下的经测试应用

“应用说明”部分 下显示的仅为推荐的起始稀释度;实际最佳的稀释度/浓度应由使用者检定。

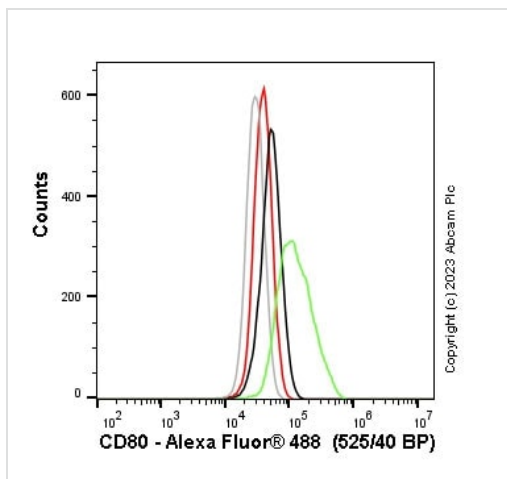
应用	Ab评论	说明
Flow Cyt (Intra)		Use at an assay dependent concentration.
WB		1/1000 - 1/10000. Detects a band of approximately 60 kDa (predicted molecular weight: 33 kDa). For unpurified use at 1/500.
IHC-P	★★★★☆ (2)	1/1000. Perform heat mediated antigen retrieval with Tris/EDTA buffer pH 9.0 before commencing with IHC staining protocol.

应用说明 Is unsuitable for ICC/IF.

靶标

功能	Involved in the costimulatory signal essential for T-lymphocyte activation. T-cell proliferation and cytokine production is induced by the binding of CD28 or CTLA-4 to this receptor.
组织特异性	Expressed on activated B-cells, macrophages and dendritic cells.
序列相似性	Contains 1 Ig-like C2-type (immunoglobulin-like) domain. Contains 1 Ig-like V-type (immunoglobulin-like) domain.
细胞定位	Membrane.

图片



Flow Cytometry (Intracellular) - Anti-CD80 antibody
[EPR1157(2)] (ab134120)

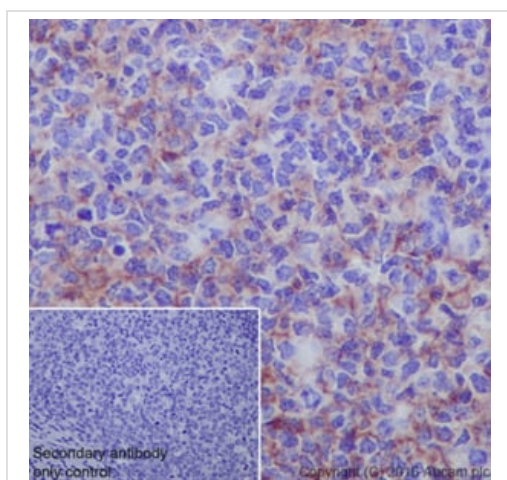
Flow cytometry overlay histogram showing wild-type Raji (green line) and CD80 knockout Raji stained with ab134120 (red line). The cells were fixed with 4% formaldehyde (10 min) and then permeabilised with 0.1% PBS-Triton X-100 for 15 min. The cells were then incubated in 1x PBS containing 10µg/ml human IgG and 10% normal goat serum to block FC receptors and non-specific protein-protein interaction followed by the antibody (ab134120) (1×10^6 in 100µl at 0.2 µg/ml (1/10150)) for 30min at 22°C.

The secondary antibody Goat Anti-Rabbit IgG H&L (Alexa Fluor® 488) preadsorbed was incubated at 1/4000 for 30min at 22°C

Isotype control antibody Recombinant Rabbit IgG, monoclonal [EPR25A] - Isotype Control was used at the same concentration and conditions as the primary antibody (wild-type Raji - black line, CD80 knockout Raji - grey line). Unlabelled sample was also used as a control (this line is not shown for the purpose of simplicity).

Acquisition of >5000 events were collected using a 50 mW Blue laser (488nm) and 525/40 bandpass filter.

This antibody gave a positive signal in Raji Fixed with 80% methanol (5 min) / permeabilised with 0.1% PBS-Triton X-100 for 15 min under the same conditions.

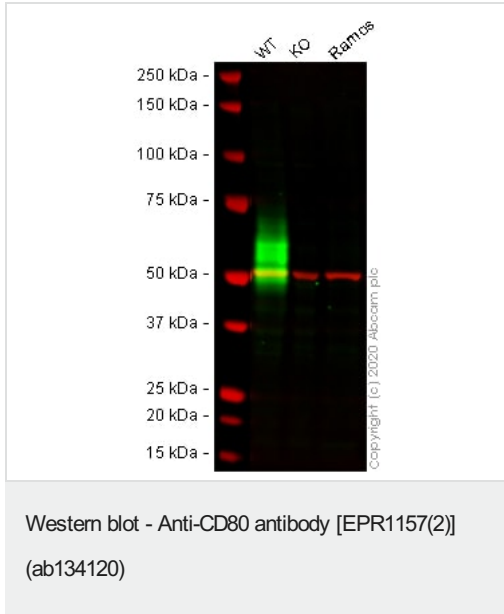


Immunohistochemistry (Formalin/PFA-fixed paraffin-embedded sections) - Anti-CD80 antibody
[EPR1157(2)] (ab134120)

Immunohistochemistry (Formalin/PFA-fixed paraffin-embedded sections) analysis of human tonsil tissue labelling CD80 with ab134120 at a dilution of 1/1000. Heat mediated antigen retrieval was performed using Tris/EDTA buffer, pH9 ([ab93684](#)).

ImmunoHistoProbe one step HRP Polymer was used. Counter stained with hematoxylin.

The image shows cytoplasmic and membrane staining.



All lanes : Anti-CD80 antibody [EPR1157(2)] (ab134120) at 1/1000 dilution

Lane 1 : Wild-type Raji (Human Burkitt's lymphoma cell line) whole cell lysate

Lane 2 : CD80 knockout Raji (Human Burkitt's lymphoma cell line) whole cell lysate

Lane 3 : Ramos (Human Burkitt's lymphoma cell line) whole cell lysate

Lysates/proteins at 20 µg per lane.

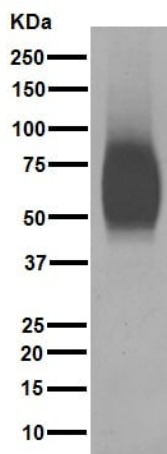
Performed under reducing conditions.

Predicted band size: 33 kDa

Observed band size: 55 kDa

Lanes 1 - 3: Merged signal (red and green). Green - ab134120 observed at 55 kDa. Red - loading control **ab7291** (Mouse anti-Alpha Tubulin [DM1A]) observed at 55kDa.

ab134120 was shown to react with CD80 in wild-type Raji cells in western blot with loss of signal observed in CD80 knockout sample. Wild-type and CD80 knockout Raji cell lysates were subjected to SDS-PAGE. Membranes were blocked in 3% milk in TBS-T (0.1% Tween®) before incubation with ab134120 and **ab7291** (Mouse anti-Alpha Tubulin [DM1A]) overnight at 4°C at a 1 in 1000 Dilution and a 1 in 20000 dilution respectively. Blots were incubated with Goat anti-Rabbit IgG H&L (IRDye® 800CW) preabsorbed (**ab216773**) and Goat anti-Mouse IgG H&L (IRDye® 680RD) preabsorbed (**ab216776**) secondary antibodies at 1 in 20000 dilution for 1 hour at room temperature before imaging.



Western blot - Anti-CD80 antibody [EPR1157(2)]
(ab134120)

Anti-CD80 antibody [EPR1157(2)] (ab134120) at 1/2500 dilution
(purified) + Raji cell lysate at 20 µg

Secondary

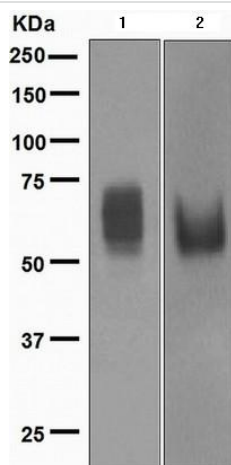
Peroxidase-conjugated goat anti-rabbit IgG (H+L) at 1/1000 dilution

Predicted band size: 33 kDa

Observed band size: 60 kDa

Blocking buffer and concentration: 5% NFDM/TBST.

Diluting buffer and concentration: 5% NFDM/TBST.



Western blot - Anti-CD80 antibody [EPR1157(2)]
(ab134120)

All lanes : Anti-CD80 antibody [EPR1157(2)] (ab134120) at
1/1000 dilution (unpurified)

Lane 1 : Raji cell lysate

Lane 2 : Ramos cell lysate

Lysates/proteins at 10 µg per lane.

Secondary

All lanes : Goat anti-rabbit HRP conjugated antibody at 1/2000
dilution

Predicted band size: 33 kDa

Observed band size: 60 kDa

Tissue Microarray (TMA) data for ab134120					
Normal tissue samples			Malignant tissue samples		
Human cardiac muscle	x	Human placenta	x	Clear cell carcinoma of human kidney	x
Human cerebrum	x	Human skeletal muscle	x	Human bladder cancer	x
Human colon	x (immune cells ✓)	Human skin	x (immune cells ✓)	Human breast carcinoma	x
Human endometrium	x	Human spleen	x	Human cervical carcinoma	x
Human kidney	x	Human stomach	x	Human colon carcinoma	x
Human liver	x	Human testis	x	Human endometrial carcinoma	x
Human lung	x	Human thyroid	x	Human gastric carcinoma	x
Human mammary gland	x	Human tonsil	✓	Human glioma	x
Human pancreas	x			Human hepatocellular carcinoma	x
				Human lung carcinoma	x
				Human non-Hodgkin's lymphoma	✓
				Human ovarian carcinoma	x
				Human pancreatic carcinoma	x
				Human prostatic hyperplasia	x
				Human thymoma	x
				Human thymus hyperplasia	x
				Human thyroid carcinoma	x

Immunohistochemistry (Formalin/PFA-fixed paraffin-embedded sections) - Anti-CD80 antibody [EPR1157(2)] (ab134120)

Why choose a recombinant antibody?

Research with confidence
Consistent and reproducible results

Long-term and scalable supply
Recombinant technology

Success from the first experiment
Confirmed specificity

Ethical standards compliant
Animal-free production

Anti-CD80 antibody [EPR1157(2)] (ab134120)

Tissue Microarrays stained for "Anti-CD80 antibody [EPR1157(2)]" using "ab134120" in immunohistochemical analysis. This table provides a detailed overview of positive (tick mark) and negative (cross mark) staining per sample type tested. The sections were pre-treated using Heat mediated antigen retrieval using Bond™ Epitope Retrieval Solution 2 (pH 9.0) for 20 minutes. The sections were incubated with ab134120 for 30 mins at room temperature followed by a ready to use Rabbit specific IHC polymer detection kit HRP/DAB (**ab209101**). The immunostaining was performed on a Leica Biosystems BOND® RX instrument.

Please note: All products are "FOR RESEARCH USE ONLY. NOT FOR USE IN DIAGNOSTIC PROCEDURES"

Our Abpromise to you: Quality guaranteed and expert technical support

6

- Replacement or refund for products not performing as stated on the datasheet
- Valid for 12 months from date of delivery
- Response to your inquiry within 24 hours
- We provide support in Chinese, English, French, German, Japanese and Spanish
- Extensive multi-media technical resources to help you
- We investigate all quality concerns to ensure our products perform to the highest standards

If the product does not perform as described on this datasheet, we will offer a refund or replacement. For full details of the Abpromise, please visit <https://www.abcam.cn/abpromise> or contact our technical team.

Terms and conditions

- Guarantee only valid for products bought direct from Abcam or one of our authorized distributors