

Anti-CD8 alpha antibody [SP16] ab101500

重组 RabMAb

★★★★★ 3 Abreviews 45 References 3 图像

概述

产品名称	Anti-CD8 alpha抗体[SP16]
描述	兔单克隆抗体[SP16] to CD8 alpha
宿主	Rabbit
经测试应用	适用于: IHC-P, Flow Cyt
种属反应性	与反应: Human
免疫原	Synthetic peptide within Human CD8 alpha aa 200 to the C-terminus (C terminal). The exact sequence is proprietary. Database link: <b>P01732</b>
表位	C-terminus
阳性对照	IHC-P: Human tonsil and lymph node tissue. Flow Cyt: Human peripheral blood lymphocytes.
常规说明	<p>This product is a recombinant monoclonal antibody, which offers several advantages including:</p> <ul style="list-style-type: none"><li>- High batch-to-batch consistency and reproducibility</li><li>- Improved sensitivity and specificity</li><li>- Long-term security of supply</li><li>- Animal-free production</li></ul> <p>For more information <a href="#">see here</a>.</p> <p><b>This product is FOR RESEARCH USE ONLY. For commercial use, please contact <a href="mailto:partnerships@abcam.com">partnerships@abcam.com</a>.</b></p>

性能

形式	Liquid
存放说明	Shipped at 4°C. Upon delivery aliquot and store at -20°C. Avoid repeated freeze / thaw cycles.
存储溶液	pH: 7.2 Preservative: 0.1% Sodium azide Constituents: 1% BSA, PBS
纯度	Tissue culture supernatant
克隆	单克隆
克隆编号	SP16

同种型

IgG

应用

The Abpromise guarantee

**Abpromise™**承诺保证使用ab101500于以下的经测试应用

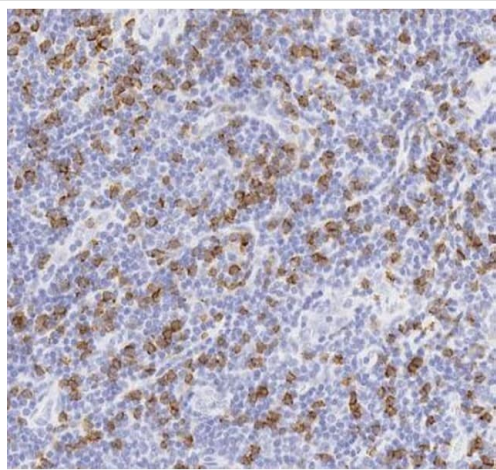
“应用说明”部分 下显示的仅为推荐的起始稀释度;实际最佳的稀释度/浓度应由使用者检定。

应用	Ab评论	说明
IHC-P	★★★★★ (3)	1/100. Perform heat mediated antigen retrieval with citrate buffer pH 6 before commencing with IHC staining protocol. Boil tissue section in 10mM citrate buffer, pH 6.0 for 10 min followed by cooling at room temperature for 20 min.
Flow Cyt		1/1000. <b>ab172730</b> - Rabbit monoclonal IgG, is suitable for use as an isotype control with this antibody.

靶标

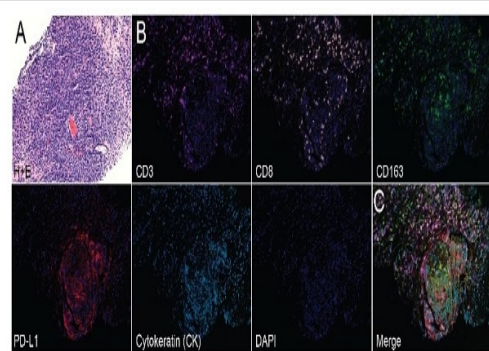
功能	Identifies cytotoxic/suppressor T-cells that interact with MHC class I bearing targets. CD8 is thought to play a role in the process of T-cell mediated killing. CD8 alpha chains binds to class I MHC molecules alpha-3 domains.
疾病相关	Defects in CD8A are a cause of familial CD8 deficiency (CD8 deficiency) [MIM:608957]. Familial CD8 deficiency is a novel autosomal recessive immunologic defect characterized by absence of CD8+ cells, leading to recurrent bacterial infections.
序列相似性	Contains 1 Ig-like V-type (immunoglobulin-like) domain.
翻译后修饰	All of the five most carboxyl-terminal cysteines form inter-chain disulfide bonds in dimers and higher multimers, while the four N-terminal cysteines do not.
细胞定位	Secreted and Cell membrane.

图片



Immunohistochemistry (Formalin/PFA-fixed paraffin-embedded sections) - Anti-CD8 alpha antibody [SP16] (ab101500)

Immunohistochemical analysis of paraffin-embedded Human tonsil labeling CD8 with ab101500 at 1/100 (21 µg/ml). The section was pre-treated using heat mediated antigen retrieval with sodium citrate buffer (pH 6.0, epitope retrieval solution 1) for 20 mins. The section was then incubated with ab101500 for 15 mins at room temperature and detected using an HRP conjugated compact polymer system. The immunostaining was performed on a Leica Biosystems BOND® RX instrument. DAB was used as the chromogen. Counterstained with Hematoxylin and mounted with DPX.

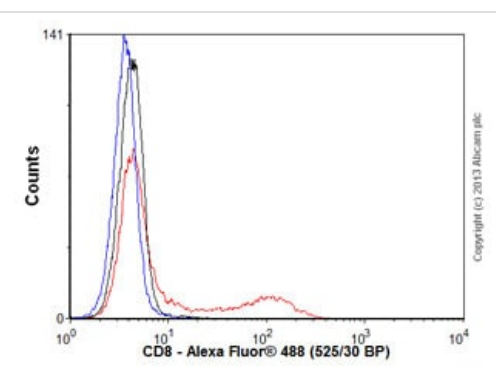


Immunohistochemistry (Formalin/PFA-fixed paraffin-embedded sections) - Anti-CD8 alpha antibody [SP16] (ab101500)

Image from Graff JN et al., *Oncotarget* 7(33), 52810 - 52817. Fig 2.; doi: 10.18632/oncotarget.10547. Reproduced under the Creative Commons license <http://creativecommons.org/licenses/by/3.0/>.

**This image was generated using a previous batch manufactured using hybridoma production method.**

IHC using multi-spectral imaging on human lymph node (A-C) obtained from men with mCRPC. A) H+E staining and B) single-color images (plus nuclear stain; DAPI) of CD3 ([ab16669](#)), CD8 alpha ([ab101500](#)), CD163, PD-L1, cytokeratin (CK), DAPI and C) merged. H+E staining at 20X magnification; multi-spectral images 200X magnification.



Flow Cytometry - Anti-CD8 alpha antibody [SP16] (ab101500)

**This image was generated using a previous batch manufactured using hybridoma production method.**

Human peripheral blood lymphocytes staining CD8 alpha with ab101500 (red line). Human whole blood was processed using a modified protocol based on Chow *et al*, 2005 (PMID: 16080188). In brief, human whole blood was fixed in 4% formaldehyde (methanol-free) for 10 min at 22°C. Red blood cells were then lysed by the addition of Triton X-100 (final concentration - 0.1%) for 15 min at 37°C. For experimentation, cells were treated with 50% methanol (-20°C) for 15 min at 4°C. Cells were then incubated with the antibody (ab101500, 1/1000 dilution) for 30 min at 4°C. The secondary antibody used was Alexa Fluor® 488 goat anti-rabbit IgG (H&L) ([ab150077](#)) at 1/2000 dilution for 30 min at 4°C. Isotype

control antibody (black line) was rabbit IgG (monoclonal) (0.1µg/1x10<sup>6</sup> cells) used under the same conditions. Unlabelled sample (blue line) was also used as a control. Acquisition of >30,000 total events were collected using a 20mW Argon ion laser (488nm) and 525/30 bandpass filter. Gating strategy - peripheral blood lymphocytes.

**Please note:** All products are "FOR RESEARCH USE ONLY. NOT FOR USE IN DIAGNOSTIC PROCEDURES"

### **Our Abpromise to you: Quality guaranteed and expert technical support**

---

- Replacement or refund for products not performing as stated on the datasheet
- Valid for 12 months from date of delivery
- Response to your inquiry within 24 hours
- We provide support in Chinese, English, French, German, Japanese and Spanish
- Extensive multi-media technical resources to help you
- We investigate all quality concerns to ensure our products perform to the highest standards

If the product does not perform as described on this datasheet, we will offer a refund or replacement. For full details of the Abpromise, please visit <https://www.abcam.cn/abpromise> or contact our technical team.

### **Terms and conditions**

---

- Guarantee only valid for products bought direct from Abcam or one of our authorized distributors