

Anti-CD68 antibody [KP1], prediluted ab845

[13 References](#) [2 图像](#)

概述

产品名称	Anti-CD68抗体[KP1], prediluted
描述	小鼠单克隆抗体[KP1] to CD68, prediluted
宿主	Mouse
特异性	This antibody is specific to macrophages in a wide variety of human tissues. It reacts with myeloid precursors and peripheral blood granulocytes. It also stains a cell population known as Plasmacytoid T cells.
经测试应用	适用于: IHC-P, Flow Cyt
种属反应性	与反应: Human
免疫原	Tissue, cells or virus corresponding to CD68. Subcellular fraction of human alveolar macrophages.
常规说明	<p>The Life Science industry has been in the grips of a reproducibility crisis for a number of years. Abcam is leading the way in addressing this with our range of recombinant monoclonal antibodies and knockout edited cell lines for gold-standard validation. Please check that this product meets your needs before purchasing.</p> <p>If you have any questions, special requirements or concerns, please send us an inquiry and/or contact our Support team ahead of purchase. Recommended alternatives for this product can be found below, along with publications, customer reviews and Q&As</p>

性能

形式	Liquid
存放说明	Shipped at 4°C. Store at +4°C. Do Not Freeze.
存储溶液	pH: 7.3 Preservative: 0.05% Sodium azide
纯化说明	Inert stabilizer Purified from TCS
克隆	单克隆
克隆编号	KP1
骨髓瘤	unknown

同种型	IgG1
轻链类型	kappa

应用

The Abpromise guarantee **Abpromise™**承诺保证使用ab845于以下的经测试应用

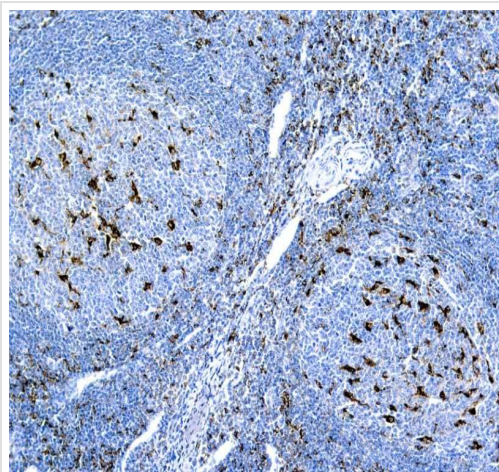
“应用说明”部分 下显示的仅为推荐的起始稀释度;实际最佳的稀释度/浓度应由使用者检定。

应用	Ab评论	说明
IHC-P		1/50 - 1/100. Perform heat mediated antigen retrieval with Tris/EDTA buffer pH 9.0 before commencing with IHC staining protocol.
Flow Cyt		1/4. ab170190 - Mouse monoclonal IgG1, is suitable for use as an isotype control with this antibody.

靶标

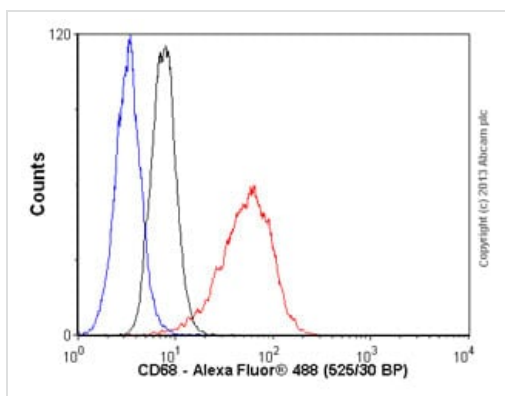
功能	Could play a role in phagocytic activities of tissue macrophages, both in intracellular lysosomal metabolism and extracellular cell-cell and cell-pathogen interactions. Binds to tissue- and organ-specific lectins or selectins, allowing homing of macrophage subsets to particular sites. Rapid recirculation of CD68 from endosomes and lysosomes to the plasma membrane may allow macrophages to crawl over selectin-bearing substrates or other cells.
组织特异性	Highly expressed by blood monocytes and tissue macrophages. Also expressed in lymphocytes, fibroblasts and endothelial cells. Expressed in many tumor cell lines which could allow them to attach to selectins on vascular endothelium, facilitating their dissemination to secondary sites.
序列相似性	Belongs to the LAMP family.
翻译后修饰	N- and O-glycosylated.
细胞定位	Cell membrane and Endosome membrane. Lysosome membrane.

图片



Immunohistochemistry (Formalin/PFA-fixed paraffin-embedded sections) - Anti-CD68 antibody [KP1], prediluted (ab845)

Formalin-fixed, paraffin-embedded human tonsil tissue stained for CD68 using ab845 in immunohistochemical analysis. Antigen retrieval with EDTA buffer pH 8.0



Flow Cytometry - Anti-CD68 antibody [KP1], prediluted (ab845)

Overlay histogram showing THP1 cells stained with ab845 (red line). The cells were fixed with 80% methanol (5 min) and then permeabilized with 0.1% PBS-Tween for 20 min. The cells were then incubated in 1x PBS / 10% normal goat serum / 0.3M glycine to block non-specific protein-protein interactions followed by the antibody (ab845, 1/4 dilution) for 30 min at 22°C. The secondary antibody used was Alexa Fluor® 488 goat anti-mouse IgG (H&L) (**ab150113**) at 1/2000 dilution for 30 min at 22°C. Isotype control antibody (black line) was mouse IgG1 [ICIGG1] (**ab91353**, 1µg/1x10⁶ cells) used under the same conditions. Unlabelled sample (blue line) was also used as a control. Acquisition of >5,000 events were collected using a 20mW Argon ion laser (488nm) and 525/30 bandpass filter.

Please note: All products are "FOR RESEARCH USE ONLY. NOT FOR USE IN DIAGNOSTIC PROCEDURES"

Our Abpromise to you: Quality guaranteed and expert technical support

- Replacement or refund for products not performing as stated on the datasheet
- Valid for 12 months from date of delivery
- Response to your inquiry within 24 hours
- We provide support in Chinese, English, French, German, Japanese and Spanish
- Extensive multi-media technical resources to help you
- We investigate all quality concerns to ensure our products perform to the highest standards

If the product does not perform as described on this datasheet, we will offer a refund or replacement. For full details of the Abpromise, please visit <https://www.abcam.cn/abpromise> or contact our technical team.

Terms and conditions

- Guarantee only valid for products bought direct from Abcam or one of our authorized distributors