


### Anti-CD68 antibody [C68/684] ab201340

★★★★★ [3 Abreviews](#) [81 References](#) [4 图像](#)

#### 概述

产品名称	Anti-CD68抗体[C68/684]
描述	小鼠单克隆抗体[C68/684] to CD68
宿主	Mouse
特异性	ab201340 recognizes a glycoprotein of 110kDa, which is identified as CD68.
经测试应用	适用于: WB, Flow Cyt, IHC-P, ICC/IF
种属反应性	与反应: Human 预测可用于: Monkey 
免疫原	Recombinant full length protein corresponding to Human CD68. (Subcellular fraction of Human alveolar macrophages). Database link: <a href="#">P34810</a>
阳性对照	IHC-P: Human tonsil and histiocytoma tissues; ICC/IF: U-87 MG cells; Flow Cyt: U-87 MG cells; WB: Human spleen tissue lysate.
常规说明	<p>ab201340 stains macrophages in a wide variety of Human tissues, including Kupffer cells and macrophages in the red pulp of the spleen, in lamina propria of the gut, in lung alveoli, and in bone marrow. It reacts with myeloid precursors and peripheral blood granulocytes. It also reacts with plasmacytoid T cells, which are supposed to be of monocyte/macrophage origin. It shows strong granular cytoplasmic staining of chronic and acute myeloid leukemia and also reacts with rare cases of true histiocytic neoplasia. Lymphomas are negative or show few granules.</p> <p>The Life Science industry has been in the grips of a reproducibility crisis for a number of years. Abcam is leading the way in addressing this with our range of recombinant monoclonal antibodies and knockout edited cell lines for gold-standard validation. Please check that this product meets your needs before purchasing.</p> <p>If you have any questions, special requirements or concerns, please send us an inquiry and/or contact our Support team ahead of purchase. Recommended alternatives for this product can be found below, along with publications, customer reviews and Q&amp;As</p>

#### 性能

形式	Liquid
存放说明	Shipped at 4°C. Store at +4°C short term (1-2 weeks). Upon delivery aliquot. Store at -20°C long term. Avoid freeze / thaw cycle.

存储溶液	pH: 7.2 Preservative: 0.05% Sodium azide Constituents: 99% PBS, 0.05% BSA
纯度	Protein A/G purified
纯化说明	ab201340 is purified from Bioreactor Concentrate by Protein A/G column chromatography.
克隆	单克隆
克隆编号	C68/684
同种型	IgG1
轻链类型	kappa

## 应用

**The Abpromise guarantee**      **Abpromise™** 承诺保证使用 ab201340 于以下的经测试应用

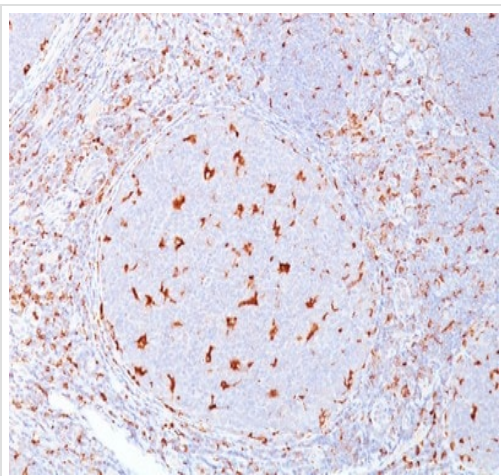
“应用说明”部分 下显示的仅为推荐的起始稀释度;实际最佳的稀释度/浓度应由使用者检定。

应用	Ab评论	说明
WB		Use a concentration of 1 - 2 µg/ml. Detects a band of approximately 110 kDa (predicted molecular weight: 37 kDa).
Flow Cyt	★★★★★ (1)	Use 1-2µg for 10 <sup>6</sup> cells. <b>ab170190</b> - Mouse monoclonal IgG1, is suitable for use as an isotype control with this antibody.
IHC-P	★★★★★ (2)	Use a concentration of 1 - 2 µg/ml. Perform heat mediated antigen retrieval with 10 mM Tris with 1 mM EDTA buffer pH 9.0 for 45 minutes at 95°C followed by cooling at RT for 20 minutes. Incubate with primary for 30 minutes at RT.
ICC/IF		Use a concentration of 1 - 2 µg/ml.

## 靶标

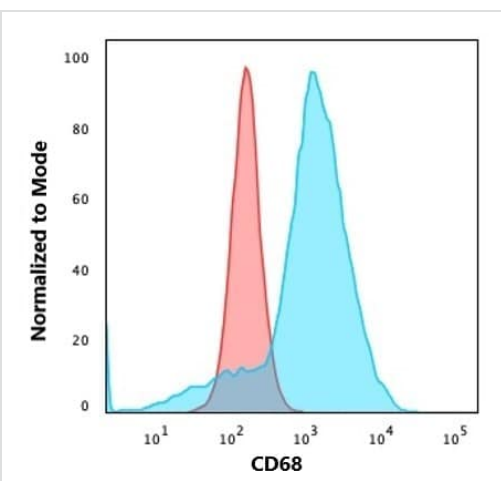
功能	Could play a role in phagocytic activities of tissue macrophages, both in intracellular lysosomal metabolism and extracellular cell-cell and cell-pathogen interactions. Binds to tissue- and organ-specific lectins or selectins, allowing homing of macrophage subsets to particular sites. Rapid recirculation of CD68 from endosomes and lysosomes to the plasma membrane may allow macrophages to crawl over selectin-bearing substrates or other cells.
组织特异性	Highly expressed by blood monocytes and tissue macrophages. Also expressed in lymphocytes, fibroblasts and endothelial cells. Expressed in many tumor cell lines which could allow them to attach to selectins on vascular endothelium, facilitating their dissemination to secondary sites.
序列相似性	Belongs to the LAMP family.
翻译后修饰	N- and O-glycosylated.
细胞定位	Cell membrane and Endosome membrane. Lysosome membrane.

图片



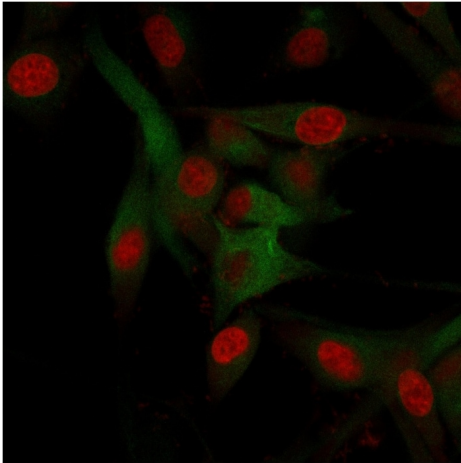
Immunohistochemical analysis of formalin-fixed, paraffin-embedded Human tonsil tissue labeling CD68 with ab201340 at 1 µg/ml.

Immunohistochemistry (Formalin/PFA-fixed paraffin-embedded sections) - Anti-CD68 antibody [C68/684] (ab201340)



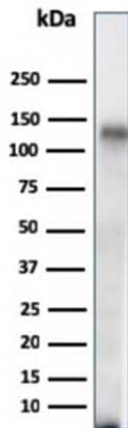
Flow Cytometry analysis of U-87 MG (human glioblastoma-astrocytoma epithelial cell line) cells labeling CD68 with ab201340. Goat Anti-Mouse IgG was used as the secondary antibody (blue); Isotype Control (red).

Flow Cytometry - Anti-CD68 antibody [C68/684] (ab201340)



Immunocytochemistry/immunofluorescence analysis of U-87 MG (human glioblastoma-astrocytoma epithelial cell line) cells labelling CD68 with ab201340. Goat Anti-Mouse IgG was used as the secondary antibody (green). Nuclear DNA stained red.

Immunocytochemistry/ Immunofluorescence - Anti-CD68 antibody [C68/684] (ab201340)



Anti-CD68 antibody [C68/684] (ab201340) + Human spleen tissue lysate

**Predicted band size:** 37 kDa

**Additional bands at:** 110 kDa (possible glycosylated form)

Western blot - Anti-CD68 antibody [C68/684] (ab201340)

**Please note:** All products are "FOR RESEARCH USE ONLY. NOT FOR USE IN DIAGNOSTIC PROCEDURES"

**Our Abpromise to you: Quality guaranteed and expert technical support**

- Replacement or refund for products not performing as stated on the datasheet
- Valid for 12 months from date of delivery
- Response to your inquiry within 24 hours
  
- We provide support in Chinese, English, French, German, Japanese and Spanish
- Extensive multi-media technical resources to help you
- We investigate all quality concerns to ensure our products perform to the highest standards

If the product does not perform as described on this datasheet, we will offer a refund or replacement. For full details of the Abpromise, please visit <https://www.abcam.cn/abpromise> or contact our technical team.

### **Terms and conditions**

---

- Guarantee only valid for products bought direct from Abcam or one of our authorized distributors