

Anti-CD63 antibody - Late Endosome Marker ab216130

103 References **2 图像**

概述

产品名称	Anti-CD63抗体- Late Endosome Marker
描述	兔多克隆抗体to CD63 - Late Endosome Marker
宿主	Rabbit
经测试应用	适用于: IHC-P, WB
种属反应性	与反应: Mouse, Human
免疫原	Synthetic peptide within Human CD63. The exact sequence is proprietary. NP_001244318 Database link: P08962
阳性对照	WB: NIH/3T3, K562 and HEK-293T cell lysates. IHC-P: Human liver cancer tissue.
常规说明	<p>The Life Science industry has been in the grips of a reproducibility crisis for a number of years. Abcam is leading the way in addressing this with our range of recombinant monoclonal antibodies and knockout edited cell lines for gold-standard validation. Please check that this product meets your needs before purchasing.</p> <p>If you have any questions, special requirements or concerns, please send us an inquiry and/or contact our Support team ahead of purchase. Recommended alternatives for this product can be found below, along with publications, customer reviews and Q&As</p>

性能

形式	Liquid
存放说明	Shipped at 4°C. Store at +4°C short term (1-2 weeks). Upon delivery aliquot. Store at -20°C long term. Avoid freeze / thaw cycle.
存储溶液	pH: 7.40 Preservative: 0.05% Sodium azide Constituents: 40% Glycerol, PBS
纯度	Immunogen affinity purified
克隆	多克隆
同种型	IgG

应用

The Abpromise guarantee

Abpromise™承诺保证使用ab216130于以下的经测试应用

“应用说明”部分 下显示的仅为推荐的起始稀释度;实际最佳的稀释度/浓度应由使用者检定。

应用	Ab评论	说明
IHC-P		1/25 - 1/100.
WB		1/200 - 1/2000. Predicted molecular weight: 26 kDa. The observed molecular weight of CD63 may vary in the range of 25-65. This is due to a number of post translational modifications, post translation cleavages, relative charges, and other experimental factors, and therefore there really is no consensus molecular weight.

靶标	
功能	This antigen is associated with early stages of melanoma tumor progression. May play a role in growth regulation.
组织特异性	Dysplastic nevi, radial growth phase primary melanomas, hematopoietic cells, tissue macrophages.
序列相似性	Belongs to the tetraspanin (TM4SF) family.
细胞定位	Cell membrane. Lysosome membrane. Late endosome membrane. Also found in Weibel-Palade bodies of endothelial cells. Located in platelet dense granules.

图片

kDa

95

72

55

36

28

17

10

1

2

3

Western blot - Anti-CD63 antibody - Late Endosome Marker (ab216130)

All lanes : Anti-CD63 antibody - Late Endosome Marker (ab216130) at 1/200 dilution

Lane 1 : NIH/3T3 (Mouse embryo fibroblast cell line) cell lysate

Lane 2 : K562 (Human chronic myelogenous leukemia cell line from bone marrow cell lysate

Lane 3 : HEK-293T (Human epithelial cell line from embryonic kidney transformed with large T antigen) cell lysate

Lysates/proteins at 40 µg per lane.

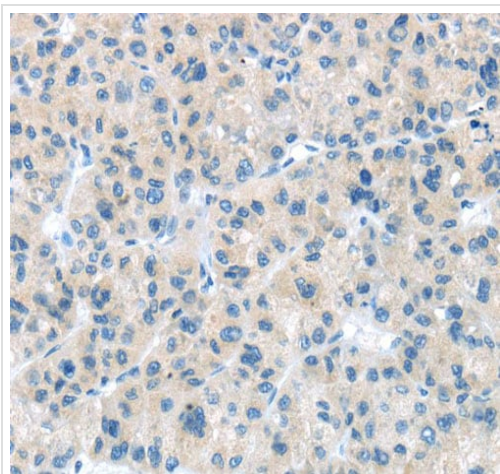
Developed using the ECL technique.

Predicted band size: 26 kDa

Exposure time: 20 seconds

2

Reducing 12% SDS-PAGE



Immunohistochemistry (Formalin/PFA-fixed paraffin-embedded sections) - Anti-CD63 antibody - Late Endosome Marker (ab216130)

Paraffin-embedded human liver cancer tissue stained for CD63 with ab216130 at a 1/25 dilution in immunohistochemical analysis.

Heat mediated antigen retrieval step in citrate buffer was performed. The sample was then blocked and incubated with the antibody for 1.5 hours at 22°C. An HRP conjugated goat anti-rabbit antibody was used as the secondary antibody.

Please note: All products are "FOR RESEARCH USE ONLY. NOT FOR USE IN DIAGNOSTIC PROCEDURES"

Our Abpromise to you: Quality guaranteed and expert technical support

- Replacement or refund for products not performing as stated on the datasheet
- Valid for 12 months from date of delivery
- Response to your inquiry within 24 hours
- We provide support in Chinese, English, French, German, Japanese and Spanish
- Extensive multi-media technical resources to help you
- We investigate all quality concerns to ensure our products perform to the highest standards

If the product does not perform as described on this datasheet, we will offer a refund or replacement. For full details of the Abpromise, please visit <https://www.abcam.cn/abpromise> or contact our technical team.

Terms and conditions

- Guarantee only valid for products bought direct from Abcam or one of our authorized distributors