


### Anti-CD62E antibody ab18981

★★★★★ [2 Abreviews](#) [38 References](#) [3 图像](#)

#### 概述

<b>产品名称</b>	Anti-CD62E抗体
<b>描述</b>	兔多克隆抗体to CD62E
<b>宿主</b>	Rabbit
<b>经测试应用</b>	<b>适用于:</b> IHC-P, WB, Flow Cyt
<b>种属反应性</b>	<b>与反应:</b> Human <b>预测可用于:</b> Rat 
<b>免疫原</b>	Synthetic peptide corresponding to Human CD62E. Surrounding aa 584. Database link: <a href="#">P16581</a> (Peptide available as <a href="#">ab113900</a> )
<b>阳性对照</b>	WB: Jurkat cell lysate. Flow Cyt: Jurkat cells. IHC-P: Human placenta
<b>常规说明</b>	This product is manufactured by BioVision, an Abcam company and was previously called 3631 E-Selectin Antibody.  The Life Science industry has been in the grips of a reproducibility crisis for a number of years. Abcam is leading the way in addressing this with our range of recombinant monoclonal antibodies and knockout edited cell lines for gold-standard validation. Please check that this product meets your needs before purchasing.  If you have any questions, special requirements or concerns, please send us an inquiry and/or contact our Support team ahead of purchase. Recommended alternatives for this product can be found below, along with publications, customer reviews and Q&As

#### 性能

<b>形式</b>	Liquid
<b>存放说明</b>	Shipped at 4°C. Upon delivery aliquot and store at -20°C or -80°C. Avoid repeated freeze / thaw cycles.
<b>存储溶液</b>	Preservative: 0.03% Proclin 300 Constituents: PBS, 30% Glycerol (glycerin, glycerine), 0.5% BSA, 0.15% EDTA
<b>纯度</b>	Affinity purified
<b>克隆</b>	多克隆
<b>同种型</b>	IgG

## 应用

**The Abpromise guarantee**      **Abpromise™** 承诺保证使用 ab18981 于以下的经测试应用

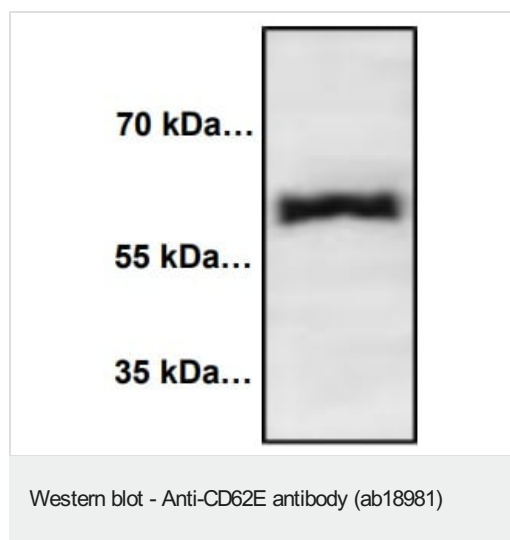
“应用说明”部分 下显示的仅为推荐的起始稀释度;实际最佳的稀释度/浓度应由使用者检定。

应用	Ab评论	说明
IHC-P		Use a concentration of 5 µg/ml. Perform heat mediated antigen retrieval with citrate buffer pH 6 before commencing with IHC staining protocol.
WB		Use a concentration of 0.5 - 4 µg/ml. Predicted molecular weight: 67 kDa.
Flow Cyt		Use at an assay dependent concentration.

## 靶标

功能	Cell-surface glycoprotein having a role in immunoadhesion. Mediates in the adhesion of blood neutrophils in cytokine-activated endothelium through interaction with PSGL1/SELPLG. May have a role in capillary morphogenesis.
序列相似性	Belongs to the selectin/LECAM family. Contains 1 C-type lectin domain. Contains 1 EGF-like domain. Contains 6 Sushi (CCP/SCR) domains.
细胞定位	Membrane.

## 图片



Anti-CD62E antibody (ab18981) at 1/1000 dilution + Jurkat cell lysate at 80 µg

### Secondary

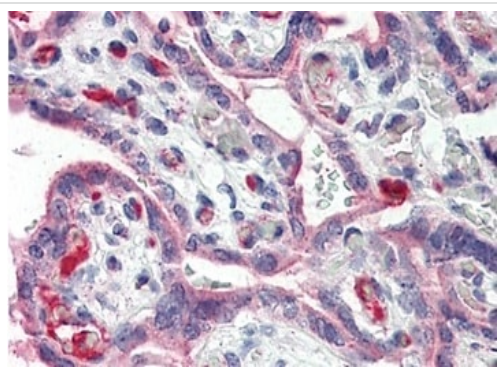
Peroxidase conjugated goat anti-rabbit IgG at 1/10000 dilution

**Predicted band size:** 67 kDa

**Observed band size:** 67 kDa

Blocking/Dilution buffer: 5% NFDM (1 hr at RT) / TBST.

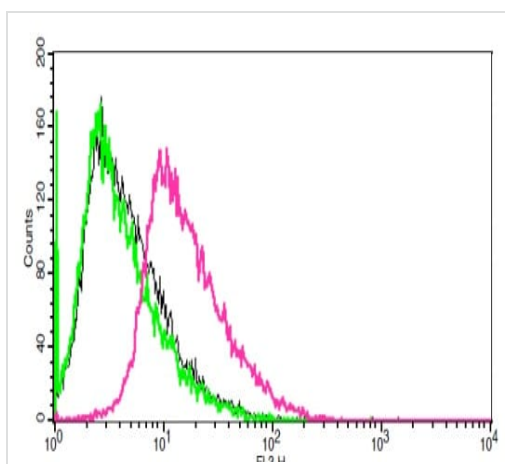
Incubated with the primary antibody overnight at 4°C. Incubated with the secondary antibody for 1 hour at room temperature.



Immunohistochemistry (Formalin/PFA-fixed paraffin-embedded sections) - Anti-CD62E antibody (ab18981)

#### ab18981 IHC staining of human placenta with E-Selectin

**Polyclonal antibody:** Immunohistochemistry of formalin fixed, paraffin-embedded tissue after heat-induced antigen retrieval. 5 µg/ml of antibody used for staining. After incubation with the primary antibody, slides were incubated with biotinylated secondary antibody, followed by alkaline phosphatase-streptavidin and chromogen.



Flow Cytometry - Anti-CD62E antibody (ab18981)

Flow cytometric analysis of Jurkat cells using ab18981 (red) with negative controls (black and green).

**Please note:** All products are "FOR RESEARCH USE ONLY. NOT FOR USE IN DIAGNOSTIC PROCEDURES"

#### Our Abpromise to you: Quality guaranteed and expert technical support

- Replacement or refund for products not performing as stated on the datasheet
- Valid for 12 months from date of delivery
- Response to your inquiry within 24 hours
- We provide support in Chinese, English, French, German, Japanese and Spanish
- Extensive multi-media technical resources to help you
- We investigate all quality concerns to ensure our products perform to the highest standards

If the product does not perform as described on this datasheet, we will offer a refund or replacement. For full details of the Abpromise, please visit <https://www.abcam.cn/abpromise> or contact our technical team.

#### Terms and conditions

- Guarantee only valid for products bought direct from Abcam or one of our authorized distributors