


Anti-CD31 antibody [TLD-3A12] ab64543

★★★★★ [7 Abreviews](#) [70 References](#) [3 图像](#)

概述

产品名称	Anti-CD31抗体[TLD-3A12]
描述	小鼠单克隆抗体[TLD-3A12] to CD31
宿主	Mouse
特异性	ab64543 recognises rat PECAM-1 (CD31). It also partially block the proliferative response of antigen-specific CD4+ T cells to antigen-presenting cells and relevant antigen.
经测试应用	适用于: IHC-Fr 不适用于: IHC-P
种属反应性	与反应: Rat 预测可用于: Pig, Rhesus monkey  不与反应: Human
免疫原	Tissue, cells or virus corresponding to Rat CD31. Activated, Lewis rat derived microglial cells
阳性对照	Rat spleen; activated microglial cells.
常规说明	<p>This antibody has been shown to partially block the proliferative response of antigen-specific CD4+ T cells to antigen-presenting cells and relevant antigen.</p> <p>The Life Science industry has been in the grips of a reproducibility crisis for a number of years. Abcam is leading the way in addressing this with our range of recombinant monoclonal antibodies and knockout edited cell lines for gold-standard validation. Please check that this product meets your needs before purchasing.</p> <p>If you have any questions, special requirements or concerns, please send us an inquiry and/or contact our Support team ahead of purchase. Recommended alternatives for this product can be found below, along with publications, customer reviews and Q&As</p>

性能

形式	Liquid
存放说明	Shipped at 4°C. Store at +4°C short term (1-2 weeks). Upon delivery aliquot. Store at -20°C long term.
存储溶液	pH: 7.40 Preservative: 0.1% Sodium azide Constituent: PBS

纯度	Immunogen affinity purified
Primary antibody说明	This antibody has been shown to partially block the proliferative response of antigen-specific CD4+ T cells to antigen-presenting cells and relevant antigen.
克隆	单克隆
克隆编号	TLD-3A12
骨髓瘤	Sp2
同种型	IgG1

应用

The Abpromise guarantee **Abpromise™承诺保证使用ab64543于以下的经测试应用**

“应用说明”部分下显示的仅为推荐的起始稀释度;实际最佳的稀释度/浓度应由使用者检定。

应用	Ab评论	说明
IHC-Fr	★★★★★ (3)	1/10 - 1/100. A fixation with acetone or methanol is recommended. Do not fix with PFA.

应用说明 Is unsuitable for IHC-P.

靶标

功能

Induces susceptibility to atherosclerosis (By similarity). Cell adhesion molecule which is required for leukocyte transendothelial migration (TEM) under most inflammatory conditions. Tyr-690 plays a critical role in TEM and is required for efficient trafficking of PECAM1 to and from the lateral border recycling compartment (LBRC) and is also essential for the LBRC membrane to be targeted around migrating leukocytes. Prevents phagocyte ingestion of closely apposed viable cells by transmitting 'detachment' signals, and changes function on apoptosis, promoting tethering of dying cells to phagocytes (the encounter of a viable cell with a phagocyte via the homophilic interaction of PECAM1 on both cell surfaces leads to the viable cell's active repulsion from the phagocyte. During apoptosis, the inside-out signaling of PECAM1 is somehow disabled so that the apoptotic cell does not actively reject the phagocyte anymore. The lack of this repulsion signal together with the interaction of the eat-me signals and their respective receptors causes the attachment of the apoptotic cell to the phagocyte, thus triggering the process of engulfment). Isoform Delta15 is unable to protect against apoptosis. Modulates BDKRB2 activation. Regulates bradykinin- and hyperosmotic shock-induced ERK1/2 activation in human umbilical cord vein cells (HUVEC).

组织特异性 Expressed on platelets and leukocytes and is primarily concentrated at the borders between endothelial cells. Isoform Long predominates in all tissues examined. Isoform Delta12 is detected only in trachea. Isoform Delta14-15 is only detected in lung. Isoform Delta14 is detected in all tissues examined with the strongest expression in heart. Isoform Delta15 is expressed in brain, testis, ovary, cell surface of platelets, human umbilical vein endothelial cells (HUVECs), Jurkat T-cell leukemia, human erythroleukemia (HEL) and U937 histiocytic lymphoma cell lines (at protein level).

序列相似性 Contains 6 Ig-like C2-type (immunoglobulin-like) domains.

结构域 The Ig-like C2-type domains 2 and 3 contribute to formation of the complex with BDKRB2 and in

翻译后修饰

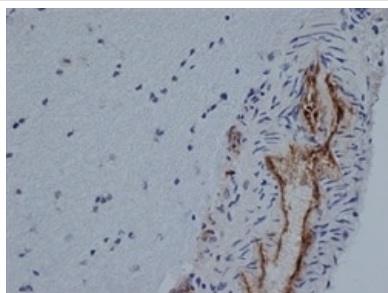
regulation of its activity.

Phosphorylated on Ser and Tyr residues after cellular activation. In endothelial cells Fyn mediates mechanical-force (stretch or pull) induced tyrosine phosphorylation.

细胞定位

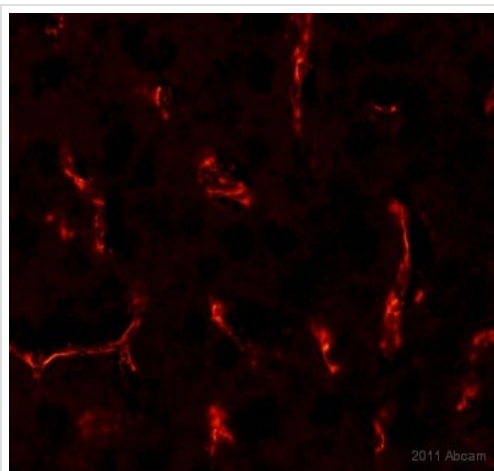
Membrane. Cell junction. Localizes to the lateral border recycling compartment (LBRC) and recycles from the LBRC to the junction in resting endothelial cells and Cell junction. Localizes to the lateral border recycling compartment (LBRC) and recycles from the LBRC to the junction in resting endothelial cells.

图片



Immunohistochemical staining of rat brain cryosection with Mouse anti Rat CD31 (ab64543)

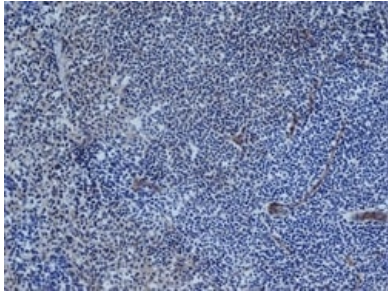
Immunohistochemistry (Frozen sections) - Anti-CD31 antibody [TLD-3A12] (ab64543)



ab64543 staining CD31 in rat brain tissue by Immunohistochemistry (Frozen sections). The sections were fixed in paraformaldehyde prior to blocking with 5% donkey serum, BSA 1%, Triton 1.5% for 2 hours at room temperature. The primary antibody was diluted 1/200 in PBS/5% Donkey serum and incubated with the sample for 12 hours at 4°C. An Alexa Fluor® 555-conjugated donkey anti-mouse polyclonal was used as the secondary antibody, diluted 1/200.

Immunohistochemistry (Frozen sections) - Anti-CD31 antibody [TLD-3A12] (ab64543)

This image is courtesy of Valley Lasry.



Immunohistochemical staining of rat spleen cryosection with Mouse anti Rat CD31 (ab64543)

Immunohistochemistry (Frozen sections) - Anti-CD31 antibody [TLD-3A12] (ab64543)

Please note: All products are "FOR RESEARCH USE ONLY. NOT FOR USE IN DIAGNOSTIC PROCEDURES"

Our Abpromise to you: Quality guaranteed and expert technical support

- Replacement or refund for products not performing as stated on the datasheet
- Valid for 12 months from date of delivery
- Response to your inquiry within 24 hours
- We provide support in Chinese, English, French, German, Japanese and Spanish
- Extensive multi-media technical resources to help you
- We investigate all quality concerns to ensure our products perform to the highest standards

If the product does not perform as described on this datasheet, we will offer a refund or replacement. For full details of the Abpromise, please visit <https://www.abcam.cn/abpromise> or contact our technical team.

Terms and conditions

- Guarantee only valid for products bought direct from Abcam or one of our authorized distributors