

### Anti-CD276 antibody [EPR20115] ab219648

敲除验证 重组 RabMAb

★★★★☆ [1 Abreviews](#) [4 References](#) [11 图像](#)

#### 概述

产品名称	Anti-CD276抗体[EPR20115]
描述	兔单克隆抗体[EPR20115] to CD276
宿主	Rabbit
经测试应用	适用于: WB, IHC-P
种属反应性	与反应: Human
免疫原	Recombinant fragment. This information is proprietary to Abcam and/or its suppliers.
阳性对照	WB: LNCaP, U-2OS, PC-3, 293T and MDA-MB-435S whole cell lysates; Human lung, skin and placenta lysates. IHC-P: Human tonsil, placenta, hepatocellular carcinoma, lung carcinoma and breast cancer tissues.
常规说明	<p>This product is a recombinant monoclonal antibody, which offers several advantages including:</p> <ul style="list-style-type: none"><li>- High batch-to-batch consistency and reproducibility</li><li>- Improved sensitivity and specificity</li><li>- Long-term security of supply</li><li>- Animal-free production</li></ul> <p>For more information <a href="#">see here</a>.</p> <p>Our RabMAb<sup>®</sup> technology is a patented hybridoma-based technology for making rabbit monoclonal antibodies. For details on our patents, please refer to <a href="#">RabMAb<sup>®</sup> patents</a>.</p>

#### 性能

形式	Liquid
存放说明	Shipped at 4°C. Store at +4°C short term (1-2 weeks). Upon delivery aliquot. Store at -20°C long term. Avoid freeze / thaw cycle.
存储溶液	pH: 7.2 Preservative: 0.01% Sodium azide Constituents: 59% PBS, 40% Glycerol (glycerin, glycerine), 0.05% BSA
纯度	Protein A purified
克隆	单克隆
克隆编号	EPR20115

同种型

IgG

## 应用

**The Abpromise guarantee**      **Abpromise™** 承诺保证使用 ab219648 于以下的经测试应用

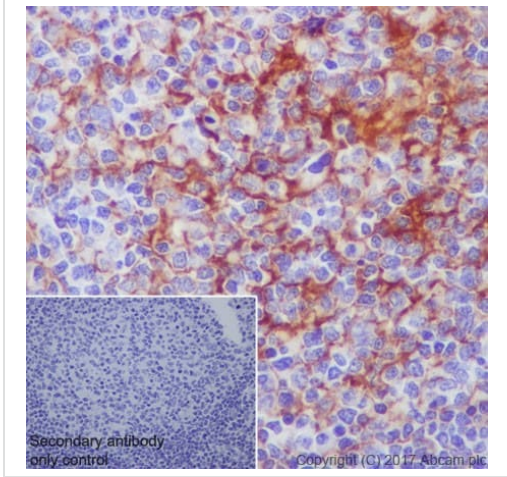
“应用说明”部分 下显示的仅为推荐的起始稀释度;实际最佳的稀释度/浓度应由使用者检定。

应用	Ab评论	说明
WB		1/1000. Detects a band of approximately 90-110 kDa (predicted molecular weight: 57 kDa).
IHC-P	★★★★★ (1)	1/4000. Perform heat mediated antigen retrieval with Tris/EDTA buffer pH 9.0 before commencing with IHC staining protocol.

## 靶标

功能	May participate in the regulation of T-cell-mediated immune response. May play a protective role in tumor cells by inhibiting natural-killer mediated cell lysis as well as a role of marker for detection of neuroblastoma cells. May be involved in the development of acute and chronic transplant rejection and in the regulation of lymphocytic activity at mucosal surfaces. Could also play a key role in providing the placenta and fetus with a suitable immunological environment throughout pregnancy. Both isoform 1 and isoform 2 appear to be redundant in their ability to modulate CD4 T-cell responses. Isoform 2 is shown to enhance the induction of cytotoxic T-cells and selectively stimulates interferon gamma production in the presence of T-cell receptor signaling.
组织特异性	Ubiquitous but not detectable in peripheral blood lymphocytes or granulocytes. Weakly expressed in resting monocytes. Expressed in dendritic cells derived from monocytes. Expressed in epithelial cells of sinonasal tissue. Expressed in extravillous trophoblast cells and Hofbauer cells of the first trimester placenta and term placenta.
序列相似性	Belongs to the immunoglobulin superfamily. BTN/MOG family. Contains 2 Ig-like C2-type (immunoglobulin-like) domains. Contains 2 Ig-like V-type (immunoglobulin-like) domains.
细胞定位	Membrane.

## 图片



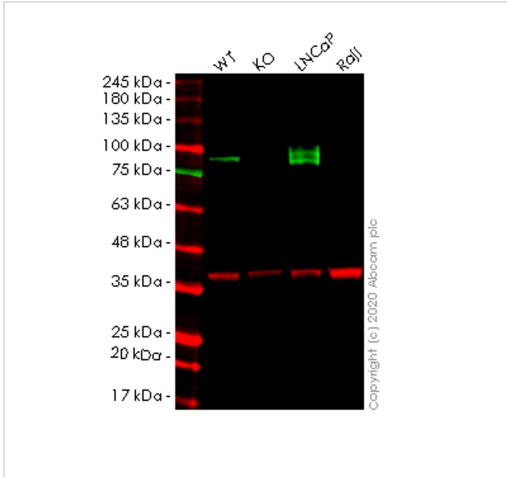
Immunohistochemistry (Formalin/PFA-fixed paraffin-embedded sections) - Anti-CD276 antibody [EPR20115] (ab219648)

Immunohistochemical analysis of paraffin-embedded human tonsil tissue labeling CD276 with ab219648 at 1/4000 dilution, followed by Goat Anti-Rabbit IgG H&L (HRP) Ready to use.

Membranous staining on dendritic cells of human tonsil is observed. Counter stained with Hematoxylin.

Secondary antibody only control: Used PBS instead of primary antibody, secondary antibody is Goat Anti-Rabbit IgG H&L (HRP) Ready to use.

Perform heat mediated antigen retrieval with Tris/EDTA buffer pH 9.0 before commencing with IHC staining protocol.



Western blot - Anti-CD276 antibody [EPR20115] (ab219648)

**All lanes** : Anti-CD276 antibody [EPR20115] (ab219648) at 1/1000 dilution

- Lane 1** : Wild-type HEK293T cell lysate
- Lane 2** : CD276 knockout HEK293T cell lysate
- Lane 3** : LNCaP cell lysate
- Lane 4** : Raji cell lysate

Lysates/proteins at 20 µg per lane.

**Secondary**

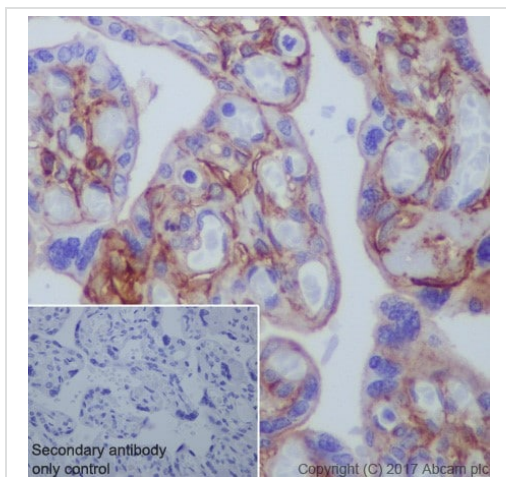
**All lanes** : Goat anti-Rabbit IgG H&L (IRDye® 800CW) preadsorbed (**ab216773**) at 1/10000 dilution

**Predicted band size:** 57 kDa

**Observed band size:** 90-110 kDa

**Lanes 1-4:** Merged signal (red and green). Green - ab219648 observed at 90-110 kDa. Red - loading control **ab8245** observed at 36 kDa.

ab219648 Anti-CD276 antibody [EPR20115] was shown to specifically react with CD276 in wild-type HEK293T cells. Loss of signal was observed when knockout cell line **ab266658** (knockout cell lysate **ab257097**) was used. Wild-type and CD276 knockout samples were subjected to SDS-PAGE. ab219648 and Anti-GAPDH antibody [6C5] - Loading Control (**ab8245**) were incubated overnight at 4°C at 1 in 1000 dilution and 1 in 20000 dilution respectively. Blots were developed with Goat anti-Rabbit IgG H&L (IRDye® 800CW) preadsorbed (**ab216773**) and Goat anti-Mouse IgG H&L (IRDye® 680RD) preadsorbed (**ab216776**) secondary antibodies at 1 in 20000 dilution for 1 hour at room temperature before imaging.



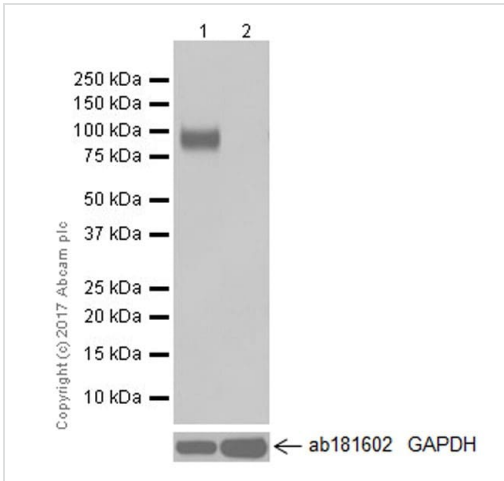
Immunohistochemistry (Formalin/PFA-fixed paraffin-embedded sections) - Anti-CD276 antibody [EPR20115] (ab219648)

Immunohistochemical analysis of paraffin-embedded human placenta tissue labeling CD276 with ab219648 at 1/4000 dilution, followed by Goat Anti-Rabbit IgG H&L (HRP) Ready to use. Cytoplasmic and membranous staining on vascular endothelial cells and trophoblast cells of human placenta is observed.

Counter stained with Hematoxylin.

Secondary antibody only control: Used PBS instead of primary antibody, secondary antibody is Goat Anti-Rabbit IgG H&L (HRP) Ready to use.

Perform heat mediated antigen retrieval with Tris/EDTA buffer pH 9.0 before commencing with IHC staining protocol.



Western blot - Anti-CD276 antibody [EPR20115]  
(ab219648)

**All lanes** : Anti-CD276 antibody [EPR20115] (ab219648) at  
1/1000 dilution

**Lane 1** : LNCaP (Human prostate cancer cell line) whole cell lysate

**Lane 2** : Raji (Human Burkitt's lymphoma cell line) whole cell lysate

Lysates/proteins at 10 µg per lane.

#### Secondary

**All lanes** : Goat Anti-Rabbit IgG H&L (HRP) (**ab97051**) at  
1/100000 dilution

**Predicted band size:** 57 kDa

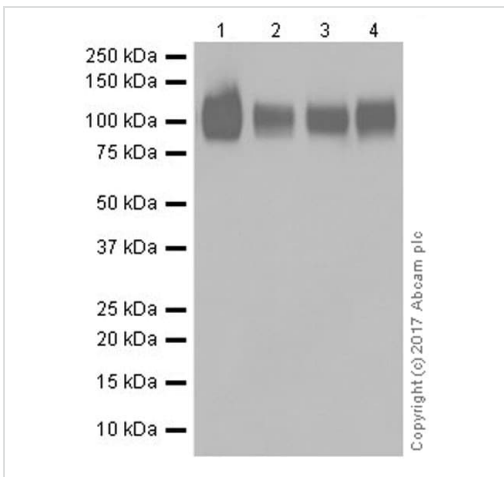
**Observed band size:** 90-110 kDa

**Exposure time:** 3 seconds

Blocking/Dilution buffer: 5% NFDM/TBST.

Raji cells were used as a negative control for CD276 (B7-H3)  
(PMID: 21344157).

**Negative control:** lane 2 Raji cell lysate



Western blot - Anti-CD276 antibody [EPR20115]  
(ab219648)

**All lanes** : Anti-CD276 antibody [EPR20115] (ab219648) at  
1/2000 dilution

**Lane 1** : U-2OS (Human bone osteosarcoma epithelial cell line)  
whole cell lysate

**Lane 2** : PC-3 (Human prostate adenocarcinoma cell line) whole  
cell lysate

**Lane 3** : 293T (Human epithelial cell line from embryonic kidney)  
whole cell lysate

**Lane 4** : MDA-MB-435S (Human ductal carcinoma cell line) whole  
cell lysate

Lysates/proteins at 10 µg per lane.

#### Secondary

**All lanes** : Goat Anti-Rabbit IgG H&L (HRP) (**ab97051**) at  
1/100000 dilution

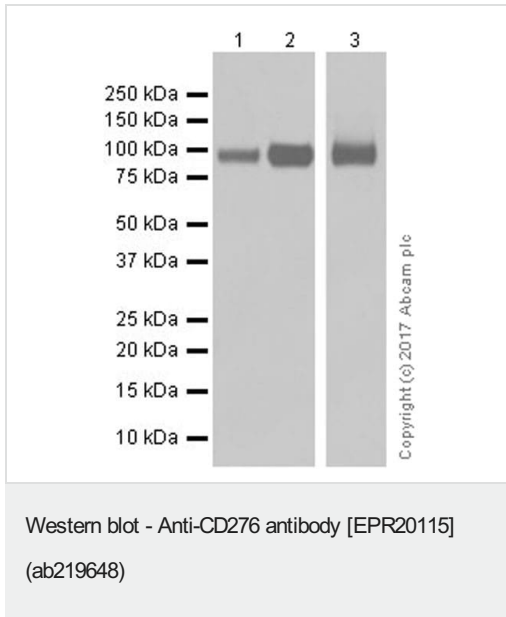
**Predicted band size:** 57 kDa

**Observed band size:** 90-110 kDa

**Exposure time:** 3 seconds

Blocking/Dilution buffer: 5% NFDM/TBST.

CD276 (B7-H3) has a molecular weight of about 90–100 kDa, depending on the glycosylation levels. [PMID:22473715].



**All lanes :** Anti-CD276 antibody [EPR20115] (ab219648) at 1/1000 dilution

**Lane 1 :** Human lung lysate

**Lane 2 :** Human skin lysate

**Lane 3 :** Human placenta lysate

Lysates/proteins at 10 µg per lane.

**Secondary**

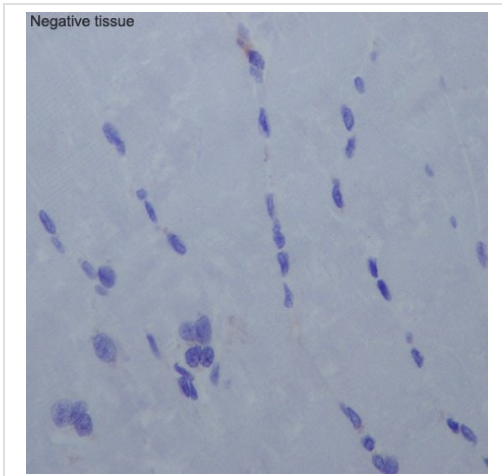
**All lanes :** VeriBlot for IP Detection Reagent (HRP) ([ab131366](#)) at 1/4000 dilution

**Predicted band size:** 57 kDa

**Observed band size:** 90-110 kDa

Blocking/Dilution buffer: 5% NFDM/TBST.

Exposure time: Lane 1/2: 30 seconds; Lane 3: 10 seconds.



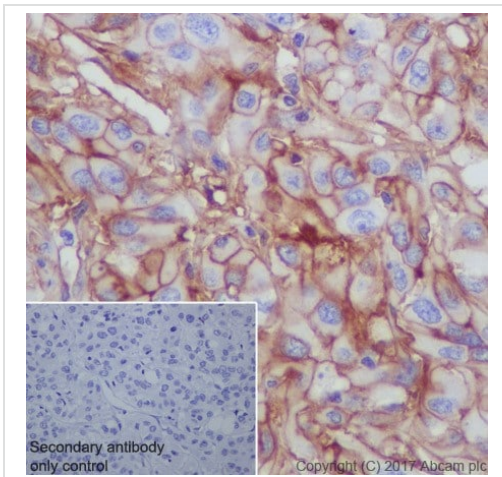
Immunohistochemistry (Formalin/PFA-fixed paraffin-embedded sections) - Anti-CD276 antibody [EPR20115] (ab219648)

Immunohistochemical analysis of paraffin-embedded human skeletal muscle tissue labeling CD276 with ab219648 at 1/4000 dilution, followed by Goat Anti-Rabbit IgG H&L (HRP) Ready to use.

**Negative tissue:** no staining on human skeletal muscle. [PMID: 18975328].

Counter stained with Hematoxylin.

Perform heat mediated antigen retrieval with Tris/EDTA buffer pH 9.0 before commencing with IHC staining protocol.



Immunohistochemistry (Formalin/PFA-fixed paraffin-embedded sections) - Anti-CD276 antibody [EPR20115] (ab219648)

Immunohistochemical analysis of paraffin-embedded human hepatocellular carcinoma tissue labeling CD276 with ab219648 at 1/4000 dilution, followed by Goat Anti-Rabbit IgG H&L (HRP) Ready to use.

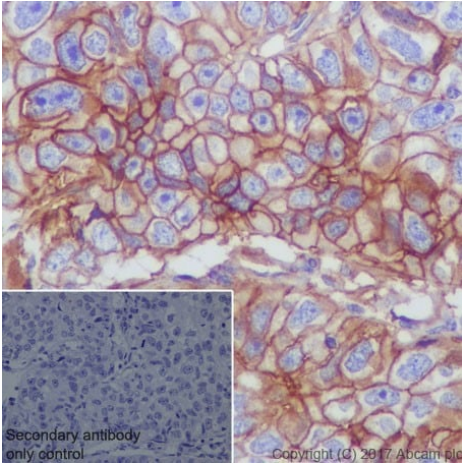
Membranous staining on human hepatocellular carcinoma is observed.

Counter stained with Hematoxylin.

Secondary antibody only control: Used PBS instead of primary antibody, secondary antibody is Goat Anti-Rabbit IgG H&L (HRP) Ready to use.

Perform heat mediated antigen retrieval with Tris/EDTA buffer pH 9.0 before commencing with IHC staining protocol.





Immunohistochemistry (Formalin/PFA-fixed paraffin-embedded sections) - Anti-CD276 antibody [EPR20115] (ab219648)

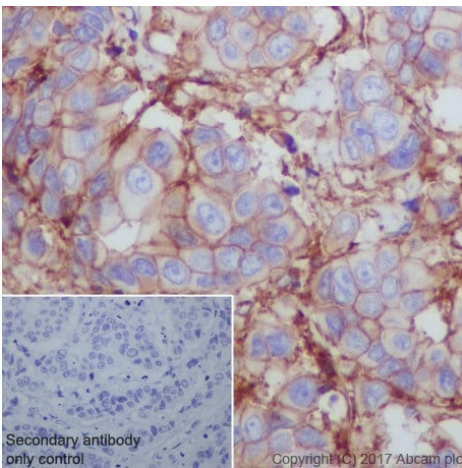
Immunohistochemical analysis of paraffin-embedded human lung carcinoma tissue labeling CD276 with ab219648 at 1/4000 dilution, followed by Goat Anti-Rabbit IgG H&L (HRP) Ready to use.

Membranous staining on human lung carcinoma is observed [PMID: 25609202].

Counter stained with Hematoxylin.

Secondary antibody only control: Used PBS instead of primary antibody, secondary antibody is Goat Anti-Rabbit IgG H&L (HRP) Ready to use.

Perform heat mediated antigen retrieval with Tris/EDTA buffer pH 9.0 before commencing with IHC staining protocol.



Immunohistochemistry (Formalin/PFA-fixed paraffin-embedded sections) - Anti-CD276 antibody [EPR20115] (ab219648)

Immunohistochemical analysis of paraffin-embedded human breast cancer tissue labeling CD276 with ab219648 at 1/4000 dilution, followed by Goat Anti-Rabbit IgG H&L (HRP) Ready to use.



Membranous and cytoplasmic staining on human breast cancer tumor cells and stromal cells is observed.

Counter stained with Hematoxylin.

Secondary antibody only control: Used PBS instead of primary antibody, secondary antibody is Goat Anti-Rabbit IgG H&L (HRP) Ready to use.

Perform heat mediated antigen retrieval with Tris/EDTA buffer pH 9.0 before commencing with IHC staining protocol.

### Why choose a recombinant antibody?

 <p><b>Research with confidence</b> Consistent and reproducible results</p>	 <p><b>Long-term and scalable supply</b> Recombinant technology</p>
 <p><b>Success from the first experiment</b> Confirmed specificity</p>	 <p><b>Ethical standards compliant</b> Animal-free production</p>

Anti-CD276 antibody [EPR20115] (ab219648)



**Please note:** All products are "FOR RESEARCH USE ONLY. NOT FOR USE IN DIAGNOSTIC PROCEDURES"

### **Our Abpromise to you: Quality guaranteed and expert technical support**

---

- Replacement or refund for products not performing as stated on the datasheet
- Valid for 12 months from date of delivery
- Response to your inquiry within 24 hours
  
- We provide support in Chinese, English, French, German, Japanese and Spanish
- Extensive multi-media technical resources to help you
- We investigate all quality concerns to ensure our products perform to the highest standards

If the product does not perform as described on this datasheet, we will offer a refund or replacement. For full details of the Abpromise, please visit <https://www.abcam.cn/abpromise> or contact our technical team.

### **Terms and conditions**

---

- Guarantee only valid for products bought direct from Abcam or one of our authorized distributors