

Anti-CD24 antibody [SN3] ab134375

★★★★★ [1 Abreviews](#) [10 References](#) [1 图像](#)

概述

产品名称	Anti-CD24抗体[SN3]
描述	小鼠单克隆抗体[SN3] to CD24
宿主	Mouse
经测试应用	适用于: Flow Cyt
种属反应性	与反应: Human
免疫原	Full length native protein (purified) corresponding to Human CD24. Glycoproteins purified from Human NALM-1 cell line.
阳性对照	Flow Cyt: Human peripheral blood cells.
常规说明	<p>The Life Science industry has been in the grips of a reproducibility crisis for a number of years. Abcam is leading the way in addressing this with our range of recombinant monoclonal antibodies and knockout edited cell lines for gold-standard validation. Please check that this product meets your needs before purchasing.</p> <p>If you have any questions, special requirements or concerns, please send us an inquiry and/or contact our Support team ahead of purchase. Recommended alternatives for this product can be found below, along with publications, customer reviews and Q&As</p>

性能

形式	Liquid
存放说明	Shipped at 4°C. Store at +4°C short term (1-2 weeks). Store at -20°C or -80°C. Avoid freeze / thaw cycle.
存储溶液	<p>pH: 7.40</p> <p>Preservative: 0.1% Sodium azide</p> <p>Constituent: 99% PBS</p>
纯度	Protein A purified
纯化说明	Purity: >95% (by SDS-PAGE).
克隆	单克隆
克隆编号	SN3
同种型	IgG1

应用

The Abpromise guarantee **Abpromise™**承诺保证使用ab134375于以下的经测试应用

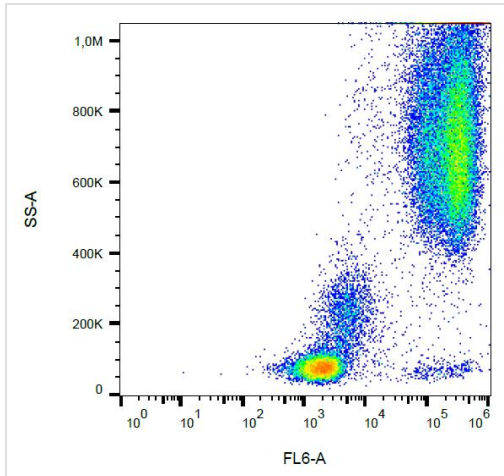
“应用说明”部分 下显示的仅为推荐的起始稀释度;实际最佳的稀释度/浓度应由使用者检定。

应用	Ab评论	说明
Flow Cyt		Use a concentration of 1 - 12 µg/ml. ab170190 - Mouse monoclonal IgG1, is suitable for use as an isotype control with this antibody.

靶标

功能	Modulates B-cell activation responses. Signaling could be triggered by the binding of a lectin-like ligand to the CD24 carbohydrates, and transduced by the release of second messengers derived from the GPI-anchor. Promotes AG-dependent proliferation of B-cells, and prevents their terminal differentiation into antibody-forming cells.
组织特异性	B-cells. Expressed in a number of B-cell lines including P32/SH and Namalwa. Expressed in erythroleukemia cell and small cell lung carcinoma cell lines. Also expressed on the surface of T-cells.
疾病相关	Genetic variations in CD24 are associated with susceptibility to multiple sclerosis (MS) [MIM:126200]. A multifactorial, inflammatory, demyelinating disease of the central nervous system. Sclerotic lesions are characterized by perivascular infiltration of monocytes and lymphocytes and appear as indurated areas in pathologic specimens (sclerosis in plaques). The pathological mechanism is regarded as an autoimmune attack of the myelin sheat, mediated by both cellular and humoral immunity. Clinical manifestations include visual loss, extra-ocular movement disorders, paresthesias, loss of sensation, weakness, dysarthria, spasticity, ataxia and bladder dysfunction. Genetic and environmental factors influence susceptibility to the disease. Note=Polymorphisms in CD24 may act as a genetic modifier for susceptibility and progression of MS in some populations, perhaps by affecting the efficiency of CD24 expression on the cell surface.
序列相似性	Belongs to the CD24 family.
翻译后修饰	Extensively O-glycosylated.
细胞定位	Cell membrane.

图片



Flow Cytometry - Anti-CD24 antibody [SN3]
(ab134375)

Flow cytometry analysis (surface staining) of human peripheral blood cells labeling CD24 with purified ab134375.

Please note: All products are "FOR RESEARCH USE ONLY. NOT FOR USE IN DIAGNOSTIC PROCEDURES"

Our Abpromise to you: Quality guaranteed and expert technical support

- Replacement or refund for products not performing as stated on the datasheet
- Valid for 12 months from date of delivery
- Response to your inquiry within 24 hours
- We provide support in Chinese, English, French, German, Japanese and Spanish
- Extensive multi-media technical resources to help you
- We investigate all quality concerns to ensure our products perform to the highest standards

If the product does not perform as described on this datasheet, we will offer a refund or replacement. For full details of the Abpromise, please visit <https://www.abcam.cn/abpromise> or contact our technical team.

Terms and conditions

- Guarantee only valid for products bought direct from Abcam or one of our authorized distributors