

Anti-CD226 (phospho S329) antibody ab61790

★★★★★ [1 Abreviews](#) [2 图像](#)

概述

产品名称	Anti-CD226 (phospho S329)抗体
描述	兔多克隆抗体to CD226 (phospho S329)
宿主	Rabbit
经测试应用	适用于: WB, IHC-P
种属反应性	与反应: Human, African green monkey 预测可用于: Mouse 
免疫原	Synthetic peptide corresponding to Human CD226 aa 250-350 (phospho S329). Database link: Q15762
阳性对照	Human brain tissue; extracts from COS7 cells
常规说明	<p>The Life Science industry has been in the grips of a reproducibility crisis for a number of years. Abcam is leading the way in addressing this with our range of recombinant monoclonal antibodies and knockout edited cell lines for gold-standard validation. Please check that this product meets your needs before purchasing.</p> <p>If you have any questions, special requirements or concerns, please send us an inquiry and/or contact our Support team ahead of purchase. Recommended alternatives for this product can be found below, along with publications, customer reviews and Q&As</p>

性能

形式	Liquid
存放说明	Shipped at 4°C. Upon delivery aliquot and store at -20°C. Avoid freeze / thaw cycles.
存储溶液	pH: 7.40 Preservative: 0.02% Sodium azide Constituents: PBS, 50% Glycerol (glycerin, glycerine), 0.87% Sodium chloride
纯度	Immunogen affinity purified
纯化说明	The antibody was affinity-purified from rabbit antiserum by affinity-chromatography using epitope-specific phosphopeptide. The antibody against non-phosphopeptide was removed by chromatography using non-phosphopeptide corresponding to the phosphorylation site.
克隆	多克隆
同种型	IgG

应用

The Abpromise guarantee **Abpromise™**承诺保证使用ab61790于以下的经测试应用

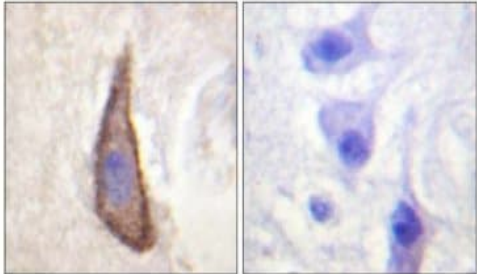
“应用说明”部分 下显示的仅为推荐的起始稀释度;实际最佳的稀释度/浓度应由使用者检定。

应用	Ab评论	说明
WB		1/500 - 1/1000. Detects a band of approximately 59 kDa (predicted molecular weight: 39 kDa).
IHC-P		1/50 - 1/100.

靶标

功能	Receptor involved in intercellular adhesion, lymphocyte signaling, cytotoxicity and lymphokine secretion mediated by cytotoxic T-lymphocyte (CTL) and NK cell.
组织特异性	Expressed by peripheral blood T-lymphocytes.
序列相似性	Contains 2 Ig-like C2-type (immunoglobulin-like) domains.
细胞定位	Membrane.

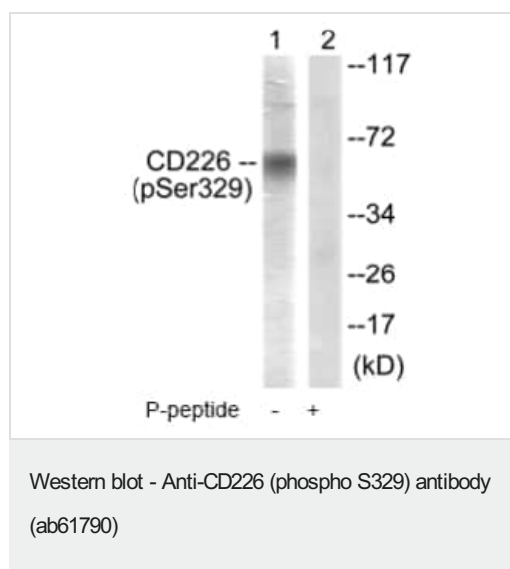
图片



P-peptide - +

Immunohistochemistry (Formalin/PFA-fixed paraffin-embedded sections) - Anti-CD226 (phospho S329) antibody (ab61790)

Immunohistochemistry analysis of paraffin-embedded human brain tissue using ab61790 at 1/50-1/100 dilution with (+) or without (-) immunising phosphopeptide.



All lanes : Anti-CD226 (phospho S329) antibody (ab61790) at 1/500 dilution

Lane 1 : Extracts from COS7 cells

Lane 2 : Extracts from COS7 cells with the immunising phosphopeptide

Predicted band size: 39 kDa

Observed band size: ~ 59 kDa

Please note: All products are "FOR RESEARCH USE ONLY. NOT FOR USE IN DIAGNOSTIC PROCEDURES"

Our Abpromise to you: Quality guaranteed and expert technical support

- Replacement or refund for products not performing as stated on the datasheet
- Valid for 12 months from date of delivery
- Response to your inquiry within 24 hours
- We provide support in Chinese, English, French, German, Japanese and Spanish
- Extensive multi-media technical resources to help you
- We investigate all quality concerns to ensure our products perform to the highest standards

If the product does not perform as described on this datasheet, we will offer a refund or replacement. For full details of the Abpromise, please visit <https://www.abcam.cn/abpromise> or contact our technical team.

Terms and conditions

- Guarantee only valid for products bought direct from Abcam or one of our authorized distributors