

Anti-CD21+CD35 antibody [4B2] ab243317

重组

1 References 4 图像

概述

产品名称	Anti-CD21+CD35抗体[4B2]
描述	小鼠单克隆抗体[4B2] to CD21+CD35
宿主	Mouse
经测试应用	适用于: WB, ICC/IF 不适用于: Flow Cyt, IHC-Fr, IHC-P or IP
种属反应性	与反应: Mouse, Rat
免疫原	Recombinant fragment. This information is considered to be commercially sensitive.
阳性对照	WB: 2.4G2 whole cell lysate. ICC/IF: WEHI-231 and 2.4G2 cells.
常规说明	<p>This antibody clone is manufactured by Abcam. If you require a custom buffer formulation or conjugation for your experiments, please contact orders@abcam.com.</p> <p>This product is a recombinant monoclonal antibody, which offers several advantages including:</p> <ul style="list-style-type: none">- High batch-to-batch consistency and reproducibility- Improved sensitivity and specificity- Long-term security of supply- Animal-free production <p>For more information see here.</p>

性能

形式	Liquid
存放说明	Shipped at 4°C. Store at +4°C short term (1-2 weeks). Upon delivery aliquot. Store at -20°C long term. Avoid freeze / thaw cycle.
存储溶液	pH: 7.2 Preservative: 0.01% Sodium azide Constituents: PBS, 40% Glycerol (glycerin, glycerine), 0.05% BSA
纯度	Protein A purified
克隆	单克隆
克隆编号	4B2
同种型	IgG1

应用

The Abpromise guarantee **Abpromise™**承诺保证使用ab243317于以下的经测试应用

“应用说明”部分下显示的仅为推荐的起始稀释度;实际最佳的稀释度/浓度应由使用者检定。

应用	Ab评论	说明
WB		Use a concentration of 0.487 µg/ml. Detects a band of approximately 155 kDa (predicted molecular weight: 113 kDa).
ICC/IF		Use a concentration of 2.435 µg/ml.

应用说明

Is unsuitable for Flow Cyt, IHC-Fr, IHC-P or IP.

靶标

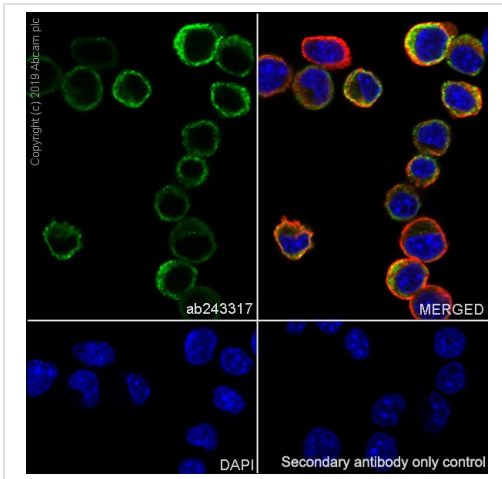
相关性

CD21 also known as complement receptor 2 (CR2), C3d receptor or EBV receptor is a 140 kDa protein. CD21 is a glycosylated type I transmembrane protein consisting of an extracellular face of a series of 15 or 16 CCP domains. CD21 is the receptor for complement components C3d and iC3b as well as the Epstein-Barr virus (EBV) glycoprotein gp350/220. The soluble CD21 (sCD21) was shown to efficiently trigger CD23 signalling pathways in human monocytes. By inducing release of proinflammatory cytokines and upregulating expression of molecules involved in antigen presentation, sCD21 modulates critical monocyte functions that may be relevant to allergic and inflammatory disorders. The CD35 gene encodes a membrane glycoprotein found on peripheral blood cells, glomerular podocytes, and follicular dendritic cells. The protein is a receptor for complement components C3b and C4b and regulates the activity of the complement cascade. Variation in this protein is the basis of the Knops blood group system. The two most common alleles, F and S, differ by 8 exons and are thought to be the result of an unequal crossover event. A secreted form of the protein present in plasma has been described, but its full length nature has not been determined.

细胞定位

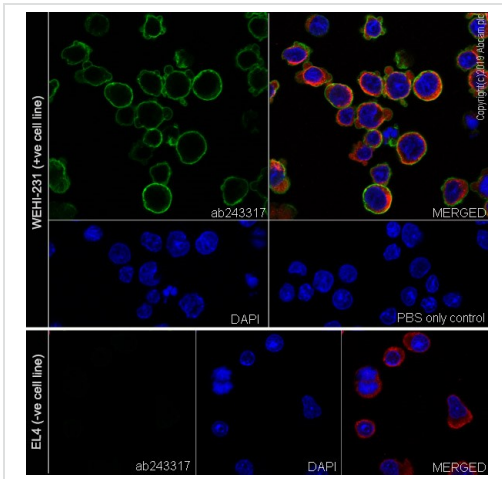
Membrane; Single pass type I membrane protein.

图片



Immunocytochemistry/ Immunofluorescence - Anti-CD21 antibody [4B2] (ab243317)

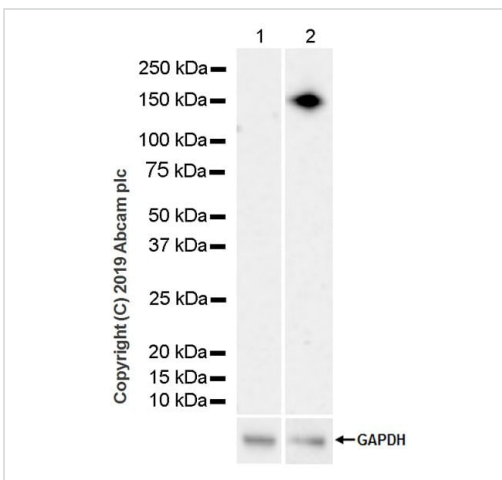
Immunofluorescent analysis of 4% paraformaldehyde-fixed, 0.1% Triton X-100 permeabilized 2.4G2 (Rat B cell lymphoma B lymphocyte) cells labeling CD21 with ab243317 at 2.435µg/ml, followed by **ab150113** AlexaFluor®488 Goat anti-Mouse secondary antibody at 1/1000 dilution (green). Confocal image showing cytoplasmic staining in 2.4G2 cell line. Tubulin is detected with **ab179504** Anti-beta IV Tubulin antibody - Microtubule Marker at 1/200 dilution, followed by **ab150080** AlexaFluor®594 Goat anti-Rabbit secondary (red). The nuclear counter stain is DAPI (blue).
Secondary antibody only control: Used PBS instead of primary antibody, followed by **ab150113** AlexaFluor®488 Goat anti-Mouse secondary antibody at 1/1000 dilution.



Immunocytochemistry/ Immunofluorescence - Anti-CD21 antibody [4B2] (ab243317)

Immunofluorescent analysis of 4% paraformaldehyde-fixed, 0.1% Triton X-100 permeabilized WEHI-231 (Mouse B cell lymphoma B lymphocyte) or EL4 (Mouse lymphoma T lymphocyte) cells labeling CD21 with ab243317 at 2.435µg/ml, followed by **ab150113** AlexaFluor®488 Goat anti-Mouse secondary antibody at 1/1000 dilution (green). Confocal image showing membranous and weak cytoplasmic staining in WEHI-231 cell line. Tubulin is detected with **ab179504** Anti-beta IV Tubulin antibody - Microtubule Marker at 1/200 dilution, followed by **ab150080** AlexaFluor®594 Goat anti-Rabbit secondary (red). The nuclear counter stain is DAPI (blue).
Secondary antibody only control: Used PBS instead of primary antibody, followed by **ab150113** AlexaFluor®488 Goat anti-Mouse secondary antibody at 1/1000 dilution.

Negative control: EL4 (PMID: 10453011).



Western blot - Anti-CD21 antibody [4B2] (ab243317)

All lanes : Anti-CD21+CD35 antibody [4B2] (ab243317) at 0.487 µg/ml

Lane 1 : EL4 (mouse lymphoma T lymphocyte), whole cell lysate

Lane 2 : 2.4G2 (rat B cell lymphoma B lymphocyte), whole cell lysate

Lysates/proteins at 20 µg per lane.

Secondary

All lanes : Peroxidase-Conjugated Goat anti-Mouse IgG at 1/10000 dilution

Predicted band size: 113 kDa


Observed band size: 155 kDa

Blocking and dilution buffer: 5% NFDm/TBST.

Exposure time: 3 minutes.

Negative control: EL4 (PMID: 10453011).

Why choose a recombinant antibody?



- Research with confidence**
Consistent and reproducible results
- Long-term and scalable supply**
Recombinant technology
- Success from the first experiment**
Confirmed specificity
- Ethical standards compliant**
Animal-free production

Anti-CD21+CD35 antibody [4B2] (ab243317)

Please note: All products are "FOR RESEARCH USE ONLY. NOT FOR USE IN DIAGNOSTIC PROCEDURES"

Our Abpromise to you: Quality guaranteed and expert technical support

- Replacement or refund for products not performing as stated on the datasheet
- Valid for 12 months from date of delivery
- Response to your inquiry within 24 hours
- We provide support in Chinese, English, French, German, Japanese and Spanish
- Extensive multi-media technical resources to help you
- We investigate all quality concerns to ensure our products perform to the highest standards

If the product does not perform as described on this datasheet, we will offer a refund or replacement. For full details of the Abpromise, please visit <https://www.abcam.cn/abpromise> or contact our technical team.

Terms and conditions

- Guarantee only valid for products bought direct from Abcam or one of our authorized distributors