

Anti-CD20 antibody ab27093

[9 References](#) [2 图像](#)

概述

| | |
|-------|--|
| 产品名称 | Anti-CD20抗体 |
| 描述 | 兔多克隆抗体to CD20 |
| 宿主 | Rabbit |
| 经测试应用 | 适用于: WB, IHC-P |
| 种属反应性 | 与反应: Human |
| 免疫原 | Synthetic peptide within Human CD20 aa 250 to the C-terminus (C terminal). The exact sequence is proprietary. Database link: P11836 |

常规说明

This product is FOR RESEARCH USE ONLY. For commercial use, please contact partnerships@abcam.com.

The Life Science industry has been in the grips of a reproducibility crisis for a number of years. Abcam is leading the way in addressing this with our range of recombinant monoclonal antibodies and knockout edited cell lines for gold-standard validation. Please check that this product meets your needs before purchasing.

If you have any questions, special requirements or concerns, please send us an inquiry and/or contact our Support team ahead of purchase. Recommended alternatives for this product can be found below, along with publications, customer reviews and Q&As

性能

| | |
|------|---|
| 形式 | Liquid |
| 存放说明 | Shipped at 4°C. Upon delivery aliquot and store at -20°C. Avoid freeze / thaw cycles. |
| 存储溶液 | pH: 7.60 Preservative: 0.1% Sodium azide Constituents: PBS, 1% BSA |
| 纯度 | Immunogen affinity purified |
| 纯化说明 | ab27093 is an affinity purified IgG. |
| 克隆 | 多克隆 |
| 同种型 | IgG |

应用

The Abpromise guarantee **Abpromise™**承诺保证使用ab27093于以下的经测试应用

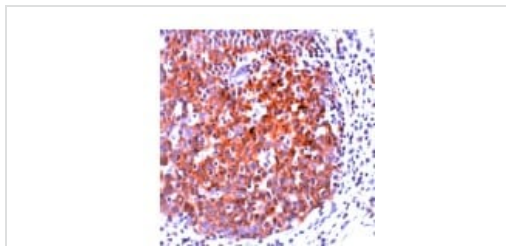
“应用说明”部分 下显示的仅为推荐的起始稀释度;实际最佳的稀释度/浓度应由使用者检定。

| 应用 | Ab评论 | 说明 |
|-------|------|--|
| WB | | Use at an assay dependent concentration. Predicted molecular weight: 33 kDa. |
| IHC-P | | 1/300. Antigen retrieval is not essential but may optimise staining. |

靶标

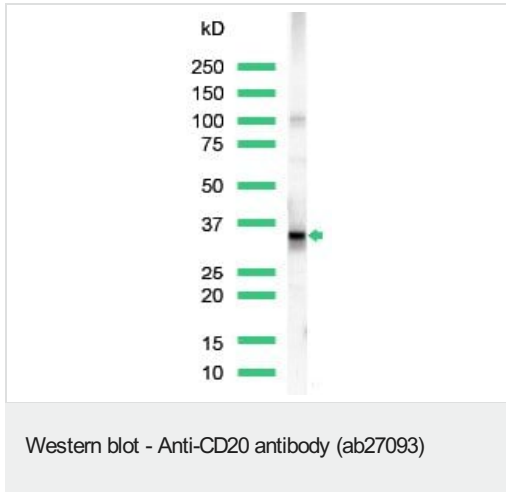
| | |
|--------------|--|
| 功能 | This protein may be involved in the regulation of B-cell activation and proliferation. |
| 组织特异性 | Expressed on B-cells. |
| 疾病相关 | Defects in MS4A1 are the cause of immunodeficiency common variable type 5 (CVID5) [MIM:613495]; also called antibody deficiency due to CD20 defect. CVID5 is a primary immunodeficiency characterized by antibody deficiency, hypogammaglobulinemia, recurrent bacterial infections and an inability to mount an antibody response to antigen. The defect results from a failure of B-cell differentiation and impaired secretion of immunoglobulins; the numbers of circulating B cells is usually in the normal range, but can be low. |
| 序列相似性 | Belongs to the MS4A family. |
| 翻译后修饰 | Phosphorylated. Might be functionally regulated by protein kinase(s). |
| 细胞定位 | Membrane. |

图片



Formalin fixed, paraffin embedded human tonsil tissue slide stained with anti CD20 antibody (ab27093).

Immunohistochemistry (Formalin/PFA-fixed paraffin-embedded sections) - Anti-CD20 antibody (ab27093)



Anti-CD20 antibody (ab27093) at 1/25 dilution + Raji cell lysate

Predicted band size: 33 kDa

Observed band size: 35 kDa

Please note: All products are "FOR RESEARCH USE ONLY. NOT FOR USE IN DIAGNOSTIC PROCEDURES"

Our Abpromise to you: Quality guaranteed and expert technical support

- Replacement or refund for products not performing as stated on the datasheet
- Valid for 12 months from date of delivery
- Response to your inquiry within 24 hours
- We provide support in Chinese, English, French, German, Japanese and Spanish
- Extensive multi-media technical resources to help you
- We investigate all quality concerns to ensure our products perform to the highest standards

If the product does not perform as described on this datasheet, we will offer a refund or replacement. For full details of the Abpromise, please visit <https://www.abcam.cn/abpromise> or contact our technical team.

Terms and conditions

- Guarantee only valid for products bought direct from Abcam or one of our authorized distributors