

Anti-CD1a antibody [EP3622] ab108309

敲除验证 重组 RabMAb

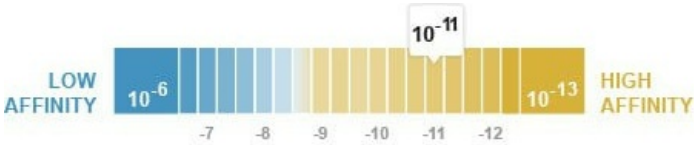
5 References 4 图像

概述

产品名称	Anti-CD1a抗体[EP3622]
描述	兔单克隆抗体[EP3622] to CD1a
宿主	Rabbit
经测试应用	适用于: WB, IHC-P 不适用于: Flow Cyt
种属反应性	与反应: Human
免疫原	Synthetic peptide. This information is proprietary to Abcam and/or its suppliers.
阳性对照	Human fetal thymus lysate, human T-78 cell lysate, human skin tissue.
常规说明	<p>This product is a recombinant monoclonal antibody, which offers several advantages including:</p> <ul style="list-style-type: none"><li>- High batch-to-batch consistency and reproducibility</li><li>- Improved sensitivity and specificity</li><li>- Long-term security of supply</li><li>- Animal-free production</li></ul> <p>For more information <a href="#">see here</a>.</p> <p>Our RabMAb<sup>®</sup> technology is a patented hybridoma-based technology for making rabbit monoclonal antibodies. For details on our patents, please refer to <a href="#">RabMAb<sup>®</sup> patents</a>.</p>

性能

形式	Liquid
存放说明	Shipped at 4°C. Store at -20°C. Stable for 12 months at -20°C.
解离常数 (K <sub>D</sub> )	K <sub>D</sub> = 1.30 x 10 <sup>-11</sup> M



[Learn more about K<sub>D</sub>](#)

存储溶液	pH: 7.20 Preservative: 0.01% Sodium azide Constituents: 59% PBS, 40% Glycerol (glycerin, glycerine), 0.05% BSA
------	--

纯度	Protein A purified
克隆	单克隆
克隆编号	EP3622
同种型	IgG

## 应用

**The Abpromise guarantee**      **Abpromise™承诺保证使用ab108309于以下的经测试应用**

“应用说明”部分下显示的仅为推荐的起始稀释度;实际最佳的稀释度/浓度应由使用者检定。

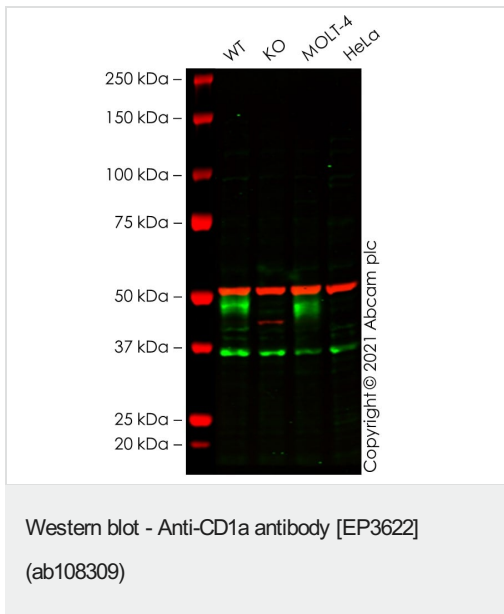
应用	Ab评论	说明
WB		1/1000 - 1/10000. Predicted molecular weight: 37 kDa.
IHC-P		1/1000. Perform heat mediated antigen retrieval with citrate buffer pH 6 before commencing with IHC staining protocol. For unpurified use at 1/250 dilution.

**应用说明** Is unsuitable for Flow Cyt.

## 靶标

<b>功能</b>	Antigen-presenting protein that binds self and non-self lipid and glycolipid antigens and presents them to T-cell receptors on natural killer T-cells.
<b>组织特异性</b>	Expressed on cortical thymocytes, epidermal Langerhans cells, dendritic cells, on certain T-cell leukemias, and in various other tissues.
<b>序列相似性</b>	Contains 1 Ig-like (immunoglobulin-like) domain.
<b>细胞定位</b>	Cell membrane. Endosome membrane. Subject to intracellular trafficking between the cell membrane and endosomes. Localizes to cell surface lipid rafts.

图片



**All lanes :** Anti-CD1a antibody [EP3622] (ab108309) at 1/1000 dilution

**Lane 1 :** Wild-type Jurkat cell lysate

**Lane 2 :** CD1A knockout Jurkat cell lysate

**Lane 3 :** MOLT-4 cell lysate

**Lane 4 :** HeLa cell lysate

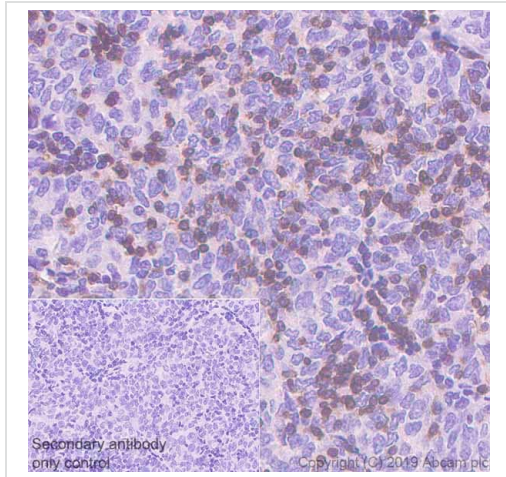
Lysates/proteins at 20 µg per lane.

Performed under reducing conditions.

**Predicted band size:** 37 kDa

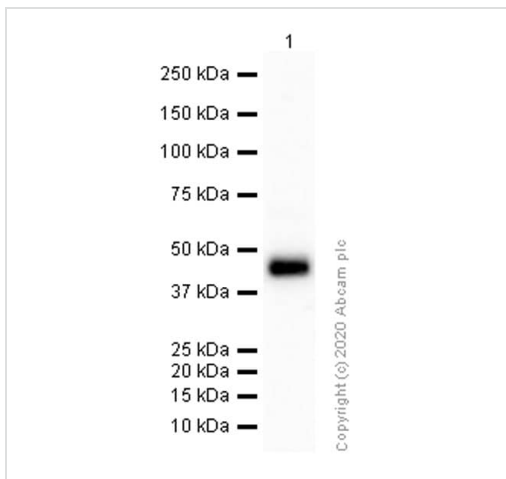
**Observed band size:** 45-50 kDa

False colour image of Western blot: Anti-CD1a antibody [EP3622] staining at 1/1000 dilution, shown in green; Mouse anti-Alpha Tubulin [DM1A] ([ab7291](#)) loading control staining at 1/20000 dilution, shown in red. In Western blot, ab108309 was shown to bind specifically to CD1a. A band was observed at 45-50 kDa in wild-type Jurkat cell lysates with no signal observed at this size in CD1A knockout cell line [ab274926](#) (knockout cell lysate [ab274984](#)). To generate this image, wild-type and CD1A knockout Jurkat cell lysates were analysed. First, samples were run on an SDS-PAGE gel then transferred onto a nitrocellulose membrane. Membranes were blocked in 3 % milk in TBS-0.1 % Tween® 20 (TBS-T) before incubation with primary antibodies overnight at 4 °C. Blots were washed four times in TBS-T, incubated with secondary antibodies for 1 h at room temperature, washed again four times then imaged. Secondary antibodies used were Goat anti-Rabbit IgG H&L (IRDye® 800CW) preabsorbed ([ab216773](#)) and Goat anti-Mouse IgG H&L (IRDye® 680RD) preabsorbed ([ab216776](#)) at 1/20000 dilution.



Immunohistochemistry (Formalin/PFA-fixed paraffin-embedded sections) - Anti-CD1a antibody [EP3622] (ab108309)

Immunohistochemistry (Formalin/PFA-fixed paraffin-embedded sections) analysis of human thymoma tissue sections labelling CD1a with purified ab108309 at 1/1000 dilution (0.14 µg/ml). Heat mediated antigen retrieval was performed using Heat mediated antigen retrieval using Bond™ Epitope Retrieval Solution 2 (pH 9.0). Tissue was counterstained with Hematoxylin. Rabbit specific IHC polymer detection kit HRP/DAB (**ab209101**) secondary antibody was used at 1/0 dilution. PBS instead of the primary antibody was used as the negative control. The immunostaining was performed on a Leica Biosystems BOND® RX instrument.



Western blot - Anti-CD1a antibody [EP3622] (ab108309)

Anti-CD1a antibody [EP3622] (ab108309) at 1/1000 dilution (Purified) + Human thymus lysate at 15 µg

### Secondary





Goat Anti-Rabbit IgG (HRP) with minimal cross-reactivity with human IgG at 1/2000 dilution

**Predicted band size:** 37 kDa

**Observed band size:** 49 kDa

The molecular weight observed is consistent with what has been described in the literature (PMID: 18178838).

Why choose a recombinant antibody?

 <p><b>Research with confidence</b> Consistent and reproducible results</p>	 <p><b>Long-term and scalable supply</b> Recombinant technology</p>
 <p><b>Success from the first experiment</b> Confirmed specificity</p>	 <p><b>Ethical standards compliant</b> Animal-free production</p>

Anti-CD1a antibody [EP3622] (ab108309)

**Please note:** All products are "FOR RESEARCH USE ONLY. NOT FOR USE IN DIAGNOSTIC PROCEDURES"

### Our Abpromise to you: Quality guaranteed and expert technical support

- Replacement or refund for products not performing as stated on the datasheet
- Valid for 12 months from date of delivery
- Response to your inquiry within 24 hours
- We provide support in Chinese, English, French, German, Japanese and Spanish
- Extensive multi-media technical resources to help you
- We investigate all quality concerns to ensure our products perform to the highest standards

If the product does not perform as described on this datasheet, we will offer a refund or replacement. For full details of the Abpromise, please visit <https://www.abcam.cn/abpromise> or contact our technical team.

### Terms and conditions

- Guarantee only valid for products bought direct from Abcam or one of our authorized distributors