

Anti-CD16+CD32 antibody [EPR23501-203] ab223200

重组 RabMAb

1 References **12 图像**

概述

产品名称	Anti-CD16+CD32抗体[EPR23501-203]
描述	兔单克隆抗体[EPR23501-203] to CD16+CD32
宿主	Rabbit
经测试应用	适用于: Flow Cyt, IP, ICC/IF, WB, IHC-P 不适用于: IHC-Fr
种属反应性	与反应: Mouse
免疫原	Recombinant fragment. This information is proprietary to Abcam and/or its suppliers.
阳性对照	WB: J774A.1 whole cell lysates; Mouse spleen and liver tissue lysates; His-tagged mouse CD16 recombinant protein; His-tagged mouse CD32 recombinant protein. IHC-P: Mouse spleen, liver and colon carcinoma tissue. ICC/IF: J774A.1 cells. Flow cyt: J774A.1 and mouse splenocyte cells. IP: J774A.1 whole cell lysate; Mouse spleen tissue lysate.
常规说明	This product is a recombinant monoclonal antibody, which offers several advantages including: <ul style="list-style-type: none"> - High batch-to-batch consistency and reproducibility - Improved sensitivity and specificity - Long-term security of supply - Animal-free production For more information see here . Our RabMAb [®] technology is a patented hybridoma-based technology for making rabbit monoclonal antibodies. For details on our patents, please refer to RabMAb[®] patents .

性能

形式	Liquid
存放说明	Shipped at 4°C. Store at +4°C short term (1-2 weeks). Upon delivery aliquot. Store at -20°C long term. Avoid freeze / thaw cycle.
存储溶液	Preservative: 0.01% Sodium azide Constituents: 59.94% PBS, 40% Glycerol, 0.05% BSA
纯度	Protein A purified
克隆	单克隆
克隆编号	EPR23501-203

同种型

IgG

应用

The Abpromise guarantee

Abpromise™承诺保证使用ab223200于以下的经测试应用

“应用说明”部分下显示的仅为推荐的起始稀释度;实际最佳的稀释度/浓度应由使用者检定。

应用	Ab评论	说明
Flow Cyt		1/500.
IP		1/30.
ICC/IF		1/500.
WB		1/1000. Detects a band of approximately 40-60 kDa.
IHC-P		1/1000. Perform heat mediated antigen retrieval with Tris/EDTA buffer pH 9.0 before commencing with IHC staining protocol.

应用说明

Is unsuitable for IHC-Fr.

靶标

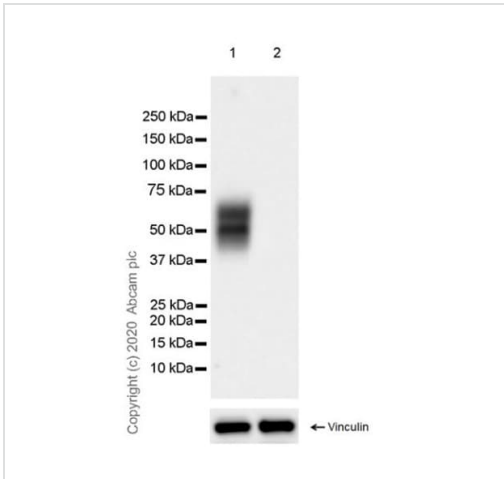
相关性

Function: Binds to the Fc region of immunoglobulins gamma. Low affinity receptor. By binding to IgG it initiates cellular responses against pathogens and soluble antigens. Promotes phagocytosis of opsonized antigens. Tissue specificity: Found on monocytes, neutrophils and eosinophil platelets. Similarity: Contains 2 Ig-like C2-type (immunoglobulin-like) domains. PTM: Phosphorylated by SRC-type Tyr-kinases such as LYN, BLK, FYN, HCK and SYK.

细胞定位

CD32: Type I membrane protein. CD16: Attached to the membrane by a GPI anchor. Exists also as a soluble receptor, produced by a proteolytic cleavage.

图片



Western blot - Anti-CD16+CD32 antibody
[EPR23501-203] (ab223200)

All lanes : Anti-CD16+CD32 antibody [EPR23501-203]
(ab223200) at 1/1000 dilution

Lane 1 : J774A.1 (mouse reticulum cell sarcoma monocyte
macrophage) whole cell lysate

Lane 2 : bEnd.3 (mouse brain endothelioma) whole cell lysate

Lysates/proteins at 20 µg per lane.

Secondary

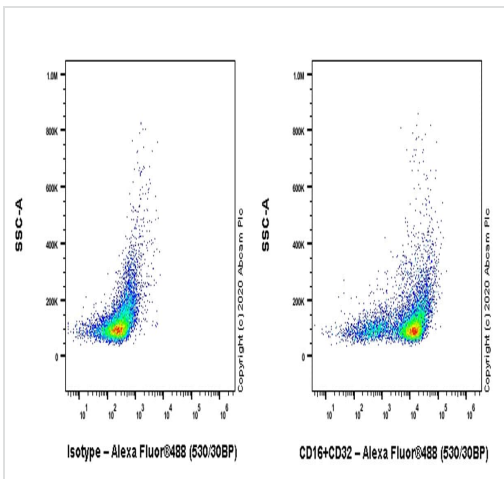
All lanes : Goat Anti-Rabbit IgG H&L (HRP) (**ab97051**) at 1/50000
dilution

Observed band size: 40-60 kDa

Blocking/Diluting buffer and concentration 5% NFD/MTBST

The molecular weight observed is consistent with what has been
described in the literature (PMID: 19503602, 31172847). Negative
control: bEnd.3 (PMID: 23911392).

Exposure time: Lanes 1-2: 5.5 seconds

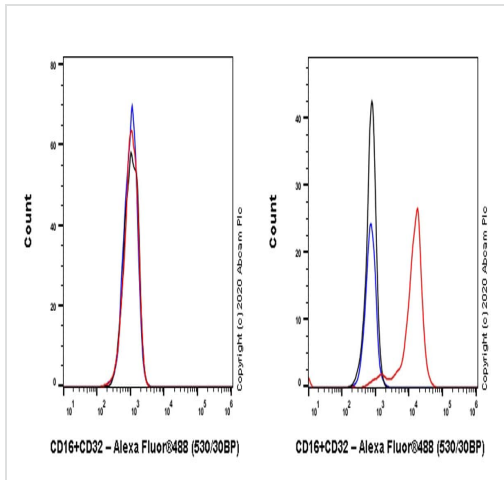


Flow Cytometry - Anti-CD16 + CD32 antibody
[EPR23501-203] (ab223200)

Flow cytometric analysis of mouse splenocytes cells labelling
CD16+CD32 with ab223200 at 1/500 dilution (Right) compared
with a Rabbit monoclonal IgG (**ab172730**) isotype control (Left).

Goat anti rabbit IgG (Alexa Fluor® 488, **ab150077**) at 1/2000
dilution was used as the secondary antibody.

Gated on viable cells.



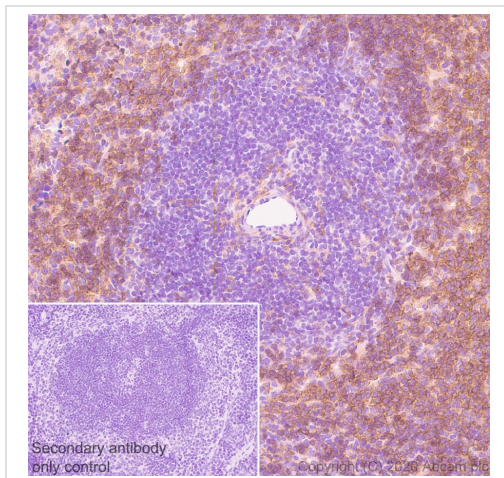
Flow Cytometry - Anti-CD16 + CD32 antibody
[EPR23501-203] (ab223200)

Flow cytometric analysis of bEnd.3 (mouse brain endothelioma, Left) / J774A.1 (mouse reticulum cell sarcoma monocyte macrophage, Right) cells labelling CD16+CD32 with ab223200 at 1/500 dilution (Red) compared with a Rabbit monoclonal IgG (ab172730) isotype control (Black) and an unlabelled control (cells without incubation with primary antibody and secondary antibody) (Blue).

Goat anti rabbit IgG (Alexa Fluor® 488, ab150077) at 1/2000 dilution was used as the secondary antibody.

Negative control: bEnd.3 (PMID: 23911392).

Gated on viable cells.

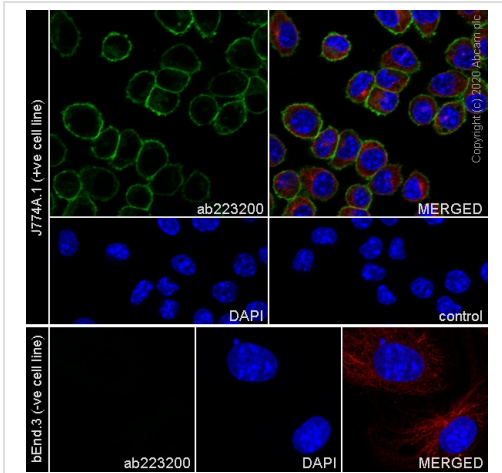


Immunohistochemistry (Formalin/PFA-fixed paraffin-embedded sections) - Anti-CD16 + CD32 antibody
[EPR23501-203] (ab223200)

Immunohistochemical analysis of paraffin-embedded mouse spleen tissue labeling CD16+CD32 with ab223200 at 1/1000 dilution followed by a ready to use Rabbit specific IHC polymer detection kit HRP/DAB (ab209101). Cytoplasmic and membranous staining on mouse spleen (PMID: 22618994). The section was incubated with ab223200 for 30 mins at room temperature. The immunostaining was performed on a Leica Biosystems BOND® RX instrument. Counterstained with Hematoxylin.

Secondary antibody only control: Secondary antibody is a ready to use Rabbit specific IHC polymer detection kit HRP/DAB (ab209101).

Heat mediated antigen retrieval with Tris-EDTA buffer (pH 9.0, epitope retrieval solution2) for 20 mins.

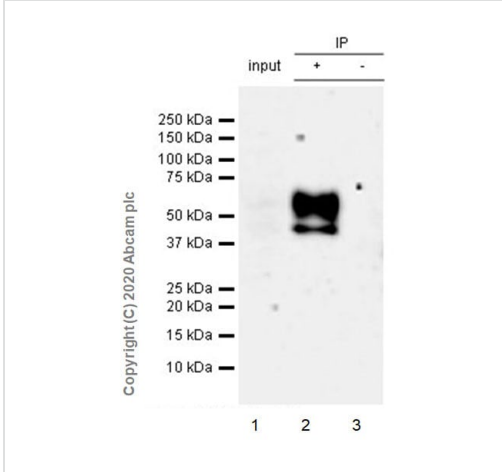


Immunocytochemistry/ Immunofluorescence - Anti-CD16+CD32 antibody [EPR23501-203] (ab223200)

Immunofluorescent analysis of 4% paraformaldehyde-fixed, 0.1% TritonX-100 permeabilized J774A.1 (mouse reticulum cell sarcoma monocyte macrophage) cells labelling CD16+CD32 with ab223200 at 1/500 dilution, followed by **ab150077** Goat Anti-Rabbit IgG H&L (Alexa Fluor® 488) antibody at 1/1000 dilution (Green). Confocal image showing strong membranous and weak cytoplasmic staining in J774A.1 cells. **ab195889** Anti-alpha Tubulin mouse monoclonal antibody - Microtubule Marker (Alexa Fluor® 594) was used to counterstain tubulin at 1/200 dilution (Red). The Nuclear counterstain was DAPI (Blue).

Secondary antibody only control: Secondary antibody is **ab150077** Goat Anti-Rabbit IgG H&L (Alexa Fluor® 488) at 1/1000 dilution.

Negative control: bEnd.3 cell (PMID: 23911392).



Immunoprecipitation - Anti-CD16 + CD32 antibody [EPR23501-203] (ab223200)

CD16+CD32 was immunoprecipitated from 0.35 mg Mouse spleen tissue lysate with ab223200 at 1/30 dilution (2ug in 0.35mg lysates). Western blot was performed on the immunoprecipitate using ab223200 at 1/1000 dilution. VeriBlot for IP Detection Reagent (HRP)(**ab131366**) was used at 1/5000 dilution.

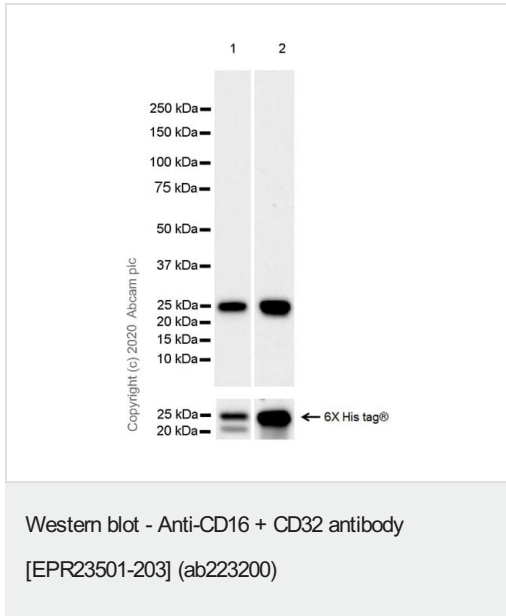
Lane 1: Mouse spleen tissue lysate 10 ug

Lane 2: ab223200 IP in Mouse spleen tissue lysate

Lane 3: Rabbit monoclonal IgG (**ab172730**) instead of ab223200 in mouse spleen tissue lysate

Blocking and dilution buffer and concentration: 5% NFDm/TBST.

Exposure time: 3 minutes.



All lanes : Anti-CD16+CD32 antibody [EPR23501-203] (ab223200) at 1/1000 dilution

Lane 1 : His-tagged mouse CD16 recombinant protein (aa 31-215), 5 uL

Lane 2 : His-tagged mouse CD32 recombinant protein (aa 30-210), 25 uL

Secondary

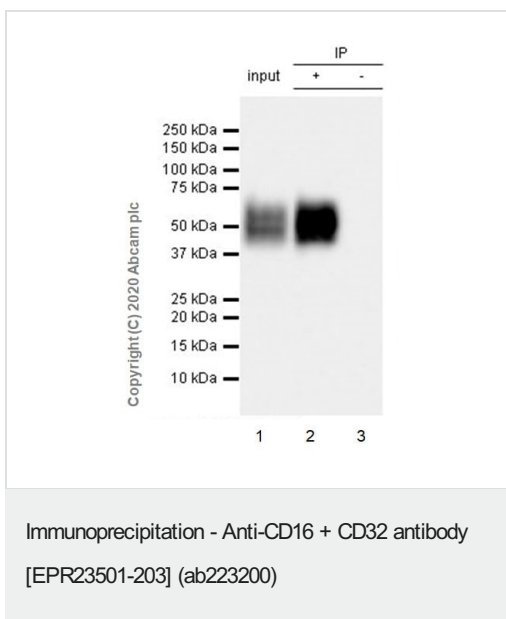
All lanes : Goat Anti-Rabbit IgG, (H+L), Peroxidase conjugated (**ab97051**) at 1/50000 dilution

Blocking and diluting buffer and concentration: 5% NFDM/TBST.

This product can recognize both CD16 and CD32.

The loading samples are E.coil extracts containing CD16 or CD32 recombinant protein respectively.

Exposure time: 70 seconds.



CD16+CD32 was immunoprecipitated from 0.35 mg J774A.1 (mouse reticulum cell sarcoma monocyte macrophage) whole cell lysate with ab223200 at 1/30 dilution (2ug in 0.35mg lysates).

Western blot was performed on the immunoprecipitate using ab223200 at 1/1000 dilution. VeriBlot for IP Detection Reagent (HRP)(**ab131366**) was used at 1/5000 dilution.

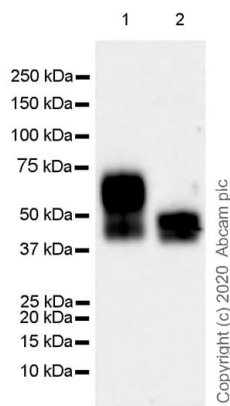
Lane 1: J774A.1 (mouse reticulum cell sarcoma monocyte macrophage) whole cell lysate 10 ug

Lane 2: ab223200 IP in J774A.1 whole cell lysate

Lane 3: Rabbit monoclonal IgG (**ab172730**) instead of ab223200 in J774A.1 whole cell lysate

Blocking and dilution buffer and concentration: 5% NFDM/TBST.

Exposure time: 8 seconds.



Western blot - Anti-CD16 + CD32 antibody
[EPR23501-203] (ab223200)

All lanes : Anti-CD16+CD32 antibody [EPR23501-203]
(ab223200) at 1/1000 dilution

Lane 1 : Mouse spleen tissue lysate

Lane 2 : Mouse liver tissue lysate

Lysates/proteins at 20 µg per lane.

Secondary

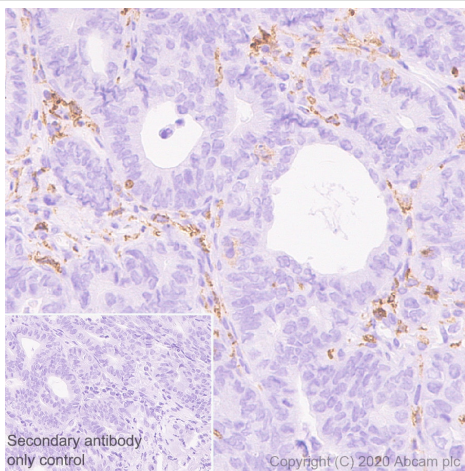
All lanes : Goat Anti-Rabbit IgG, (H+L), Peroxidase conjugated
(**ab97051**) at 1/50000 dilution

Observed band size: 40-60 kDa

Blocking and diluting buffer and concentration: 5% NFD/MTBST.

The molecular weight observed is consistent with what has been described in the literature (PMID: 19503602, 31172847).

Exposure time: 3 minutes.

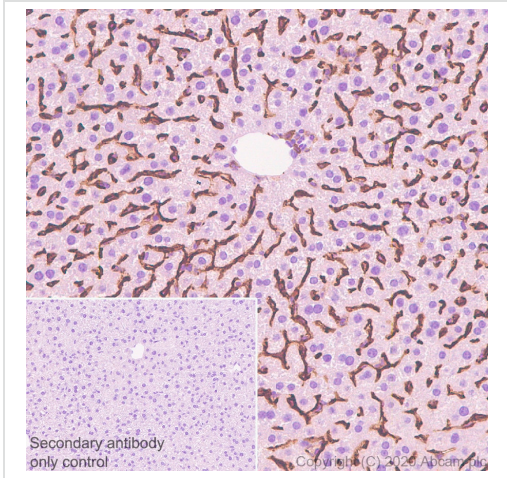


Immunohistochemistry (Formalin/PFA-fixed paraffin-embedded sections) - Anti-CD16 + CD32 antibody
[EPR23501-203] (ab223200)

Immunohistochemical analysis of paraffin-embedded mouse colon carcinoma tissue labeling CD16+CD32 with ab223200 at 1/1000 dilution followed by a ready to use Rabbit specific IHC polymer detection kit HRP/DAB (**ab209101**). Positive staining on the stroma in mouse colon carcinoma. The section was incubated with ab223200 for 30 mins at room temperature. The immunostaining was performed on a Leica Biosystems BOND® RX instrument. Counterstained with Hematoxylin.

Secondary antibody only control: Secondary antibody is a ready to use Rabbit specific IHC polymer detection kit HRP/DAB (**ab209101**).

Heat mediated antigen retrieval with Tris-EDTA buffer (pH 9.0, epitope retrieval solution2) for 20 mins.



Immunohistochemistry (Formalin/PFA-fixed paraffin-embedded sections) - Anti-CD16 + CD32 antibody [EPR23501-203] (ab223200)

Immunohistochemical analysis of paraffin-embedded mouse liver tissue labeling CD16+CD32 with ab223200 at 1/1000 dilution followed by a ready to use Rabbit specific IHC polymer detection kit HRP/DAB (**ab209101**). Positive staining on mouse liver. The section was incubated with ab223200 for 30 mins at room temperature. The immunostaining was performed on a Leica Biosystems BOND[®] RX instrument. Counterstained with Hematoxylin.

Secondary antibody only control: Secondary antibody is a ready to use Rabbit specific IHC polymer detection kit HRP/DAB (**ab209101**).

Heat mediated antigen retrieval with Tris-EDTA buffer (pH 9.0, epitope retrieval solution2) for 20 mins.

Why choose a recombinant antibody?

 Research with confidence Consistent and reproducible results	 Long-term and scalable supply Recombinant technology
 Success from the first experiment Confirmed specificity	 Ethical standards compliant Animal-free production

Anti-CD16+CD32 antibody [EPR23501-203] (ab223200)

Please note: All products are "FOR RESEARCH USE ONLY. NOT FOR USE IN DIAGNOSTIC PROCEDURES"

Our Abpromise to you: Quality guaranteed and expert technical support

- Replacement or refund for products not performing as stated on the datasheet
- Valid for 12 months from date of delivery
- Response to your inquiry within 24 hours

- We provide support in Chinese, English, French, German, Japanese and Spanish
- Extensive multi-media technical resources to help you
- We investigate all quality concerns to ensure our products perform to the highest standards

If the product does not perform as described on this datasheet, we will offer a refund or replacement. For full details of the Abpromise, please visit <https://www.abcam.cn/abpromise> or contact our technical team.

Terms and conditions

- Guarantee only valid for products bought direct from Abcam or one of our authorized distributors