

### Anti-CD15 antibody [MEM-158] ab665

★★★★★ [1 Abreviews](#) [1 References](#) [2 图像](#)

#### 概述

产品名称	Anti-CD15抗体[MEM-158]
描述	小鼠单克隆抗体[MEM-158] to CD15
宿主	Mouse
经测试应用	适用于: Flow Cyt
种属反应性	与反应: Human
免疫原	Tissue, cells or virus corresponding to Human CD15. Human granulocytes
阳性对照	Flow Cyt: Human peripheral whole blood.
常规说明	<p>The Life Science industry has been in the grips of a reproducibility crisis for a number of years. Abcam is leading the way in addressing this with our range of recombinant monoclonal antibodies and knockout edited cell lines for gold-standard validation. Please check that this product meets your needs before purchasing.</p> <p>If you have any questions, special requirements or concerns, please send us an inquiry and/or contact our Support team ahead of purchase. Recommended alternatives for this product can be found below, along with publications, customer reviews and Q&amp;As</p>

#### 性能

形式	Liquid
存放说明	Shipped at 4°C. Store at +4°C short term (1-2 weeks). Upon delivery aliquot. Store at -20°C or -80°C. Avoid freeze / thaw cycle.
存储溶液	pH: 8.00 Preservative: 0.097% Sodium azide Constituent: Tris buffered saline
纯度	Proprietary Purification
纯化说明	Purified from TCS. Purified by precipitation and chromatography. Purity >95% by SDS-PAGE.
克隆	单克隆
克隆编号	MEM-158
同种型	IgM

## The Abpromise guarantee **Abpromise™**承诺保证使用ab665于以下的经测试应用

“应用说明”部分 下显示的仅为推荐的起始稀释度;实际最佳的稀释度/浓度应由使用者检定。

应用	Ab评论	说明
Flow Cyt		Use a concentration of 1 - 4 µg/ml. <b>ab91545</b> - Mouse monoclonal IgM, is suitable for use as an isotype control with this antibody.

## 靶标

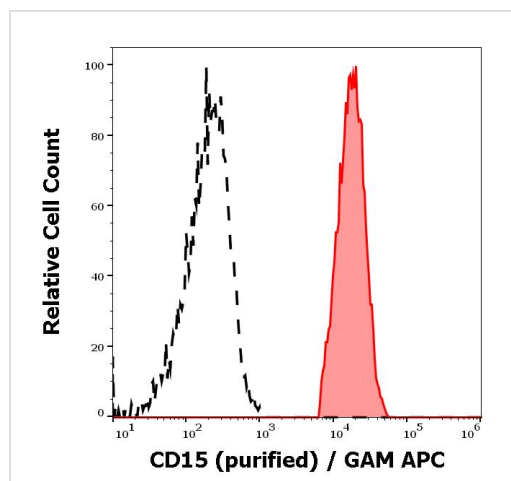
### 相关性

CD15 is a carbohydrate adhesion molecule (and not a protein) that mediates phagocytosis and chemotaxis. Synthesis is directed by FUT4 in lymphoid cells and mature granulocytes, and by FUT9 in promyelocytes and monocytes.

### 细胞定位

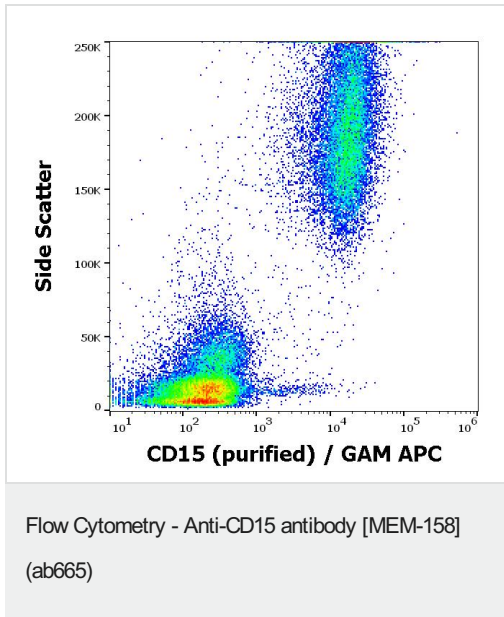
Golgi Apparatus; Membrane-bound form in trans cisternae of Golgi.

## 图片



Flow Cytometry analysis of human peripheral whole blood labeling CD15 (surface staining) with ab665 at 0.3 µg/mL. CD15 positive human neutrophil granulocytes (red-filled). CD15 negative lymphocytes (black-dashed).

Flow Cytometry - Anti-CD15 antibody [MEM-158]  
(ab665)



Flow cytometry surface staining pattern of human peripheral blood stained using Anti-CD15 antibody [MEM-158] (ab6665) at 0.3 µg/mL.

**Please note:** All products are "FOR RESEARCH USE ONLY. NOT FOR USE IN DIAGNOSTIC PROCEDURES"

### Our Abpromise to you: Quality guaranteed and expert technical support

- Replacement or refund for products not performing as stated on the datasheet
- Valid for 12 months from date of delivery
- Response to your inquiry within 24 hours
- We provide support in Chinese, English, French, German, Japanese and Spanish
- Extensive multi-media technical resources to help you
- We investigate all quality concerns to ensure our products perform to the highest standards

If the product does not perform as described on this datasheet, we will offer a refund or replacement. For full details of the Abpromise, please visit <https://www.abcam.cn/abpromise> or contact our technical team.

### Terms and conditions

- Guarantee only valid for products bought direct from Abcam or one of our authorized distributors