

### Anti-CD130 (gp130) antibody [EPR24557-5] ab283569

敲除验证 重组 RabMAb

#### 4 图像

#### 概述

产品名称	Anti-CD130 (gp130)抗体[EPR24557-5]
描述	兔单克隆抗体[EPR24557-5] to CD130 (gp130)
宿主	Rabbit
经测试应用	适用于: Flow Cyt 不适用于: ICC/IF, IHC-P, IP or WB
种属反应性	与反应: Human
免疫原	Recombinant fragment. This information is proprietary to Abcam and/or its suppliers.
阳性对照	Flow Cyt: MG63, Wild-type A549 cells.
常规说明	This product is a recombinant monoclonal antibody, which offers several advantages including: - High batch-to-batch consistency and reproducibility - Improved sensitivity and specificity - Long-term security of supply - Animal-free production For more information <a href="#">see here</a> . Our RabMAb <sup>®</sup> technology is a patented hybridoma-based technology for making rabbit monoclonal antibodies. For details on our patents, please refer to <a href="#">RabMAb<sup>®</sup> patents</a> .

#### 性能

形式	Liquid
存放说明	Shipped at 4°C. Store at +4°C short term (1-2 weeks). Upon delivery aliquot. Store at -20°C. Avoid freeze / thaw cycle.
存储溶液	pH: 7.20 Preservative: 0.01% Sodium azide Constituents: 59% PBS, 40% Glycerol (glycerin, glycerine), 0.05% BSA
纯度	Protein A purified
克隆	单克隆
克隆编号	EPR24557-5
同种型	IgG

## 应用

---

### The Abpromise guarantee

**Abpromise™**承诺保证使用ab283569于以下的经测试应用

“应用说明”部分下显示的仅为推荐的起始稀释度;实际最佳的稀释度/浓度应由使用者检定。

应用	Ab评论	说明
Flow Cyt		1/50.

### 应用说明

Is unsuitable for ICC/IF, IHC-P, IP or WB.

## 靶标

---

### 功能

Signal-transducing molecule. The receptor systems for IL6, LIF, OSM, CNTF, IL11, CTF1 and BSF3 can utilize gp130 for initiating signal transmission. Binds to IL6/IL6R (alpha chain) complex, resulting in the formation of high-affinity IL6 binding sites, and transduces the signal. Does not bind IL6. May have a role in embryonic development (By similarity). The type I OSM receptor is capable of transducing OSM-specific signaling events.

### 组织特异性

Found in all the tissues and cell lines examined. Expression not restricted to IL6 responsive cells.

### 序列相似性

Belongs to the type I cytokine receptor family. Type 2 subfamily.

Contains 5 fibronectin type-III domains.

Contains 1 Ig-like C2-type (immunoglobulin-like) domain.

### 结构域

The WSXWS motif appears to be necessary for proper protein folding and thereby efficient intracellular transport and cell-surface receptor binding.

The box 1 motif is required for JAK interaction and/or activation.

### 翻译后修饰

Phosphorylation of Ser-782 down-regulates cell surface expression.

Heavily N-glycosylated.

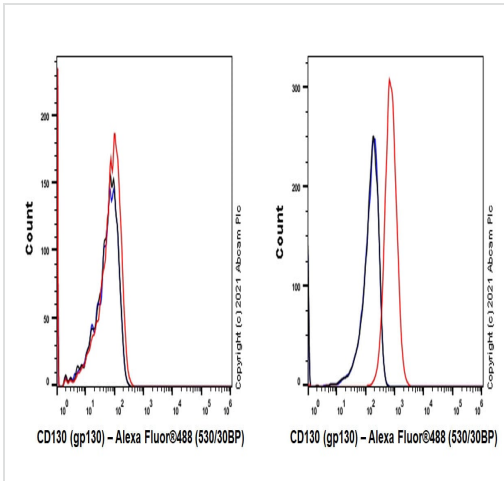
### 细胞定位

Secreted and Cell membrane.

---

## 图片

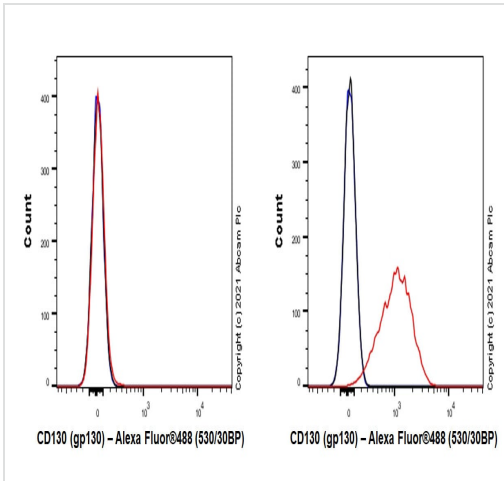
---



Flow Cytometry - Anti-CD130 (gp130) antibody  
[EPR24557-5] (ab283569)

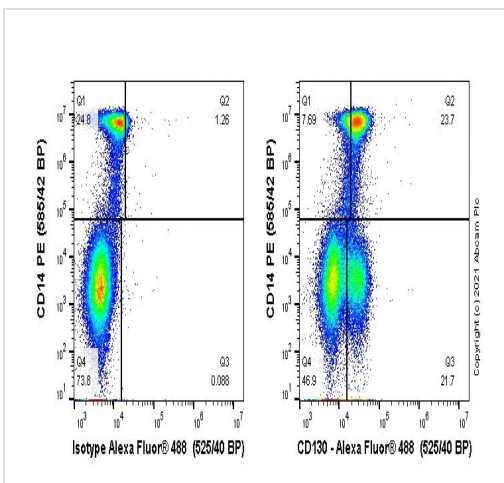
Flow cytometric analysis of Daudi (Human Burkitt's lymphoma lymphoblast) (Left) / MG-63 (human osteosarcoma fibroblast) (Right) cells labelling CD130 (gp130) with ab283569 at 1/50 dilution (1ug)/ (Red) compared with a Rabbit monoclonal IgG (**ab172730**) (Black) isotype control and an unlabelled control (cells without incubation with primary antibody and secondary antibody) (Blue). Goat F(ab')<sub>2</sub> Anti-Rabbit IgG(DyLight® 488, **ab98507**) at 1/500 dilution was used as the secondary antibody. Gated on viable cells.

Low expression: Daudi (PMID: 2261637).



Flow Cytometry - Anti-CD130 (gp130) antibody  
[EPR24557-5] (ab283569)

Flow cytometric analysis of Wild-type A549 (Human lung carcinoma epithelial cell) (Right) / CD130 (gp130) knockout A549 cells (Left) cells labelling CD130 (gp130) with ab283569 at 1/500 dilution (0.1ug)/ (Red) compared with a Rabbit monoclonal IgG (**ab172730**) (Black) isotype control and an unlabelled control (cells without incubation with primary antibody and secondary antibody) (Blue). Goat F(ab')<sub>2</sub> Anti-Rabbit IgG(DyLight® 488, **ab98507**) at 1/500 dilution was used as the secondary antibody. Gated on viable cells.



Flow Cytometry - Anti-CD130 (gp130) antibody  
[EPR24557-5] (ab283569)

Flow cytometry staining of human peripheral blood mononuclear cells (PBMCs) with ab283569 (right) or Rabbit IgG (monoclonal) (**ab172730**) isotype (left). PBMCs were incubated for 30 min on ice in 1x PBS containing 10µg/ml human IgG and 10% normal goat serum to block FC receptors and non-specific protein-protein interaction followed by the antibody (ab283569) or Rabbit IgG (monoclonal) (**ab172730**) isotype (1x10<sup>6</sup> in 100µl; with 0.01µg antibody) for 30 min on ice.

The secondary antibody Goat anti-rabbit IgG H&L (Alexa Fluor® 488, pre-adsorbed) (**ab150081**) was used at 1:2000 dilution for 30 min on ice.

The cells were simultaneously stained with CD14 PE.

Acquisition of >30000 events were collected using a 50 mW Blue laser (488nm) and 525/40 bandpass filter. Events were gated on

viable cells.

Why choose a recombinant antibody?

**Research with confidence**  
Consistent and reproducible results

**Long-term and scalable supply**  
Recombinant technology

**Success from the first experiment**  
Confirmed specificity

**Ethical standards compliant**  
Animal-free production

Anti-CD130 (gp130) antibody [EPR24557-5]  
(ab283569)

**Please note:** All products are "FOR RESEARCH USE ONLY. NOT FOR USE IN DIAGNOSTIC PROCEDURES"

### Our Abpromise to you: Quality guaranteed and expert technical support

---

- Replacement or refund for products not performing as stated on the datasheet
- Valid for 12 months from date of delivery
- Response to your inquiry within 24 hours
- We provide support in Chinese, English, French, German, Japanese and Spanish
- Extensive multi-media technical resources to help you
- We investigate all quality concerns to ensure our products perform to the highest standards

If the product does not perform as described on this datasheet, we will offer a refund or replacement. For full details of the Abpromise, please visit <https://www.abcam.cn/abpromise> or contact our technical team.

### Terms and conditions

---

- Guarantee only valid for products bought direct from Abcam or one of our authorized distributors