

Anti-CD11b + CD11c antibody [OX42] ab1211

★★★★★ [6 Abreviews](#) [143 References](#) [4 图像](#)

概述

产品名称	Anti-CD11b + CD11c抗体[OX42]
描述	小鼠单克隆抗体[OX42] to CD11b + CD11c
宿主	Mouse
经测试应用	适用于: IHC-Fr, ICC/IF 不适用于: IHC-P
种属反应性	与反应: Rat 不与反应: Mouse
免疫原	Tissue, cells or virus corresponding to CD11b. Resident peritoneal macrophages from (PVG.RT1[c] x PVG.RT1[u]) and (PVG.RT1[c] x PVG.RT1[a]) F1-hybrid rat.
阳性对照	ICC/IF: NR8383 cells. IHC-Fr: Rat spleen and lung tissue sections (10µm).
常规说明	<p><u>IHC protocol advice:</u></p> <p>This antibody is not suitable for IHC on paraffin-embedded samples.</p> <p>For best results in IHC on frozen tissue, the following may help detection:</p> <ol style="list-style-type: none"> 1) Paraformaldehyde perfusion fixed samples have worked well for many customers. 2) For non-perfused tissue, either snap freeze or immerse in periodate-lysine-paraformaldehyde (PLP) fixative for 24 hours at 4°C. Reduce the concentration of paraformaldehyde to 0.25-0.5% since this increases the staining intensity for immune cell surface markers (PMID: 7868861). 3) PFA-fixed samples will require cryoprotection by sucrose infiltration. 4) For snap frozen tissue, fix sections in cold acetone for 10 min. Allow to dry for 10 min at room temperature. Wash with water for 10 min. 5) Do not heat the samples or sections. 6) During the staining procedure, do not allow the sections to dry out. <p>Our Technical team (technical@abcam.com) will be happy to provide further information and advice.</p> <p>This antibody clone is manufactured by Abcam. If you require a custom buffer formulation or conjugation for your experiments, please contact orders@abcam.com.</p> <p>The Life Science industry has been in the grips of a reproducibility crisis for a number of years. Abcam is leading the way in addressing this with our range of recombinant monoclonal antibodies and knockout edited cell lines for gold-standard validation. Please check that this product meets your needs before purchasing.</p> <p>If you have any questions, special requirements or concerns, please send us an inquiry and/or contact our Support team ahead of purchase. Recommended alternatives for this product can be</p>

found below, along with publications, customer reviews and Q&As

性能

形式	Liquid
存放说明	Shipped at 4°C. Upon delivery aliquot. Store at -20°C or -80°C. Avoid freeze / thaw cycle.
存储溶液	pH: 7.40 Preservative: 0.02% Sodium azide Constituent: PBS Some batches contain 6.97% L-Arginine as a stabilizing agent. For lot-specific buffer information, please contact our Scientific Support team.
纯度	Protein G purified
Primary antibody说明	The principal use of this antibody is in the study of functional heterogeneity of macrophages; it may be used to follow macrophage differentiation and to investigate the function of the CD11b + CD11c equivalent antigen.
克隆	单克隆
克隆编号	OX42
同种型	IgG2a
轻链类型	kappa

应用

The Abpromise guarantee **Abpromise™**承诺保证使用ab1211于以下的经测试应用

“应用说明”部分 下显示的仅为推荐的起始稀释度;实际最佳的稀释度/浓度应由使用者检定。

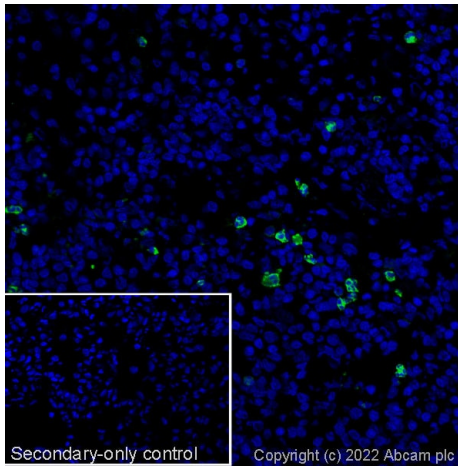
应用	Ab评论	说明
IHC-Fr	★★★★★ (2)	Use at an assay dependent concentration.
ICC/IF		Use a concentration of 1 - 5 µg/ml.

应用说明 Is unsuitable for IHC-P.

靶标

细胞定位 CD11b: Membrane. CD11c: Membrane.

图片



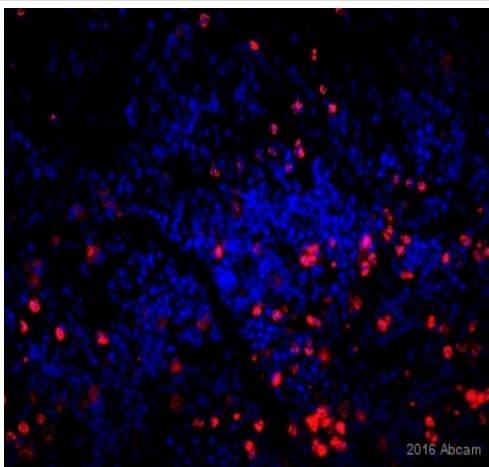
Immunohistochemistry (Frozen sections) - Anti-CD11b + CD11c antibody [OX42] (ab1211)

Immunofluorescence staining of CD11b + CD11c staining in a section of 10% formalin fixed (10 mins, RT) frozen rat spleen.

Non-specific protein-protein interactions were then blocked in TBS containing 0.025% (v/v) Triton X-100, 0.3M (w/v) glycine and 1% (w/v) BSA for 1h at room temperature. The section was then incubated overnight at +4°C in TBS containing 0.025% (v/v) Triton X-100 and 1% (w/v) BSA with ab1211 at 1µg/ml. The section was then incubated with **ab150117** (Goat Anti-Mouse IgG H&L (Alexa Fluor® 488) preabsorbed, (Shown in green) 1.5µg/ml) for 1 hour at room temperature. Nuclear DNA was labelled with DAPI (shown in blue). The section was then mounted using Fluoromount®.

Image was taken with a confocal microscope (Leica-Microsystems, TCS SP8).

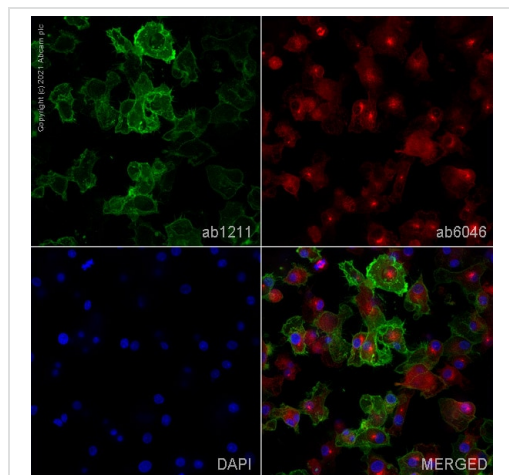
For other IHC staining systems (automated and non-automated), customers should optimize variable parameters such as antigen retrieval conditions, antibody concentrations and incubation times.



Immunohistochemistry (Frozen sections) - Anti-CD11b + CD11c antibody [OX42] (ab1211)

Image courtesy of Carl Hobbs.

ab1211 staining CD11b + CD11c (shown in red) in rat spleen tissue sections by IHC (PFA perfusion fixed frozen sections). Tissue samples were fixed with formaldehyde and blocked with BSA for 10 minutes at 21°C. The sample was incubated with primary antibody (1/2000 in TBS/BSA/azide) at 21°C for 16 hours. A Biotin-conjugated Goat anti mouse polyclonal (1/300) was used as the secondary antibody.

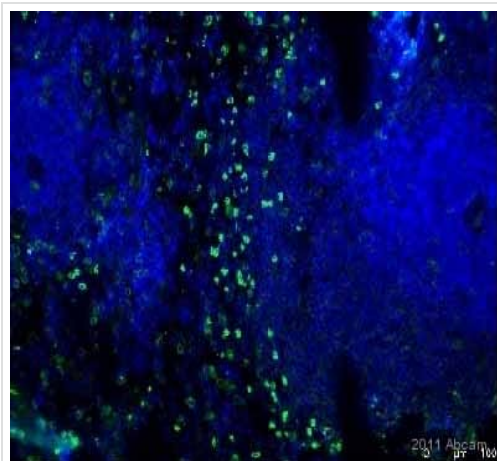


Immunocytochemistry/ Immunofluorescence - Anti-CD11b + CD11c antibody [OX42] (ab1211)

ab1211 staining CD11b + CD11c in NR8383 cells. The cells were fixed with 4% paraformaldehyde (10 min), permeabilized with 0.1% PBS-Tween for 5 minutes and then blocked with 1% BSA/10% normal goat serum/0.3M glycine in 0.1% PBS-Tween for 1h. The cells were then incubated overnight at 4°C with ab1211 at 1 µg/ml and **ab6046**, Rabbit polyclonal to beta Tubulin - Loading Control. Cells were then incubated with **ab150117**, Goat polyclonal Secondary Antibody to Mouse IgG H&L (Alexa Fluor® 488) preadsorbed at 1/1000 dilution (shown in green) and **ab150080**, Goat polyclonal Secondary Antibody to Rabbit IgG - H&L (Alexa Fluor® 594) at 1/1000 dilution (shown in pseudocolour red). Nuclear DNA was labelled with DAPI (shown in blue).

Also suitable in cells fixed with 100% methanol (5 min).

Image was acquired with a high-content analyser (Operetta CLS, Perkin Elmer) and a maximum intensity projection of confocal sections is shown.



Immunohistochemistry (Frozen sections) - Anti-CD11b + CD11c antibody [OX42] (ab1211)
Image courtesy of an anonymous Abreview.

ab1211 staining CD11b + CD11c (shown in green) in rat spleen tissue by IHC (Frozen sections). Tissue was fixed in formaldehyde, blocked with 10% serum for 30 minutes at 24°C, then incubated with ab1211 at a 1/100 dilution. The secondary used was an Alexa-Fluor 488 conjugated goat anti-mouse polyclonal, used at a 1/1000 dilution.

Please note: All products are "FOR RESEARCH USE ONLY. NOT FOR USE IN DIAGNOSTIC PROCEDURES"

Our Abpromise to you: Quality guaranteed and expert technical support

- Replacement or refund for products not performing as stated on the datasheet
- Valid for 12 months from date of delivery
- Response to your inquiry within 24 hours
- We provide support in Chinese, English, French, German, Japanese and Spanish
- Extensive multi-media technical resources to help you
- We investigate all quality concerns to ensure our products perform to the highest standards

If the product does not perform as described on this datasheet, we will offer a refund or replacement. For full details of the Abpromise, please visit <https://www.abcam.cn/abpromise> or contact our technical team.

Terms and conditions

- Guarantee only valid for products bought direct from Abcam or one of our authorized distributors