

### Anti-CD105 antibody [MEM-226] ab2529

敲除 验证

[24 References](#) [6 图像](#)

#### 概述

|       |   |
|-------|---|
| 产品名称  | Anti-CD105抗体[MEM-226]   |
| 描述    | 小鼠单克隆抗体[MEM-226] to CD105   |
| 宿主    | Mouse   |
| 经测试应用 | 适用于: ICC/IF, Sandwich ELISA, Flow Cyt, WB   |
| 种属反应性 | 与反应: Human  |
| 免疫原   | Recombinant full length protein (Human). Expressed in vaccinia virus containing CD105 cDNA.   |
| 阳性对照  | ICC/IF: HeLa cells. WB: Human colon tissue lysate. Flow Cyt: U937 cells.  |
| 常规说明  | <p>The Life Science industry has been in the grips of a reproducibility crisis for a number of years. Abcam is leading the way in addressing this with our range of recombinant monoclonal antibodies and knockout edited cell lines for gold-standard validation. Please check that this product meets your needs before purchasing.</p> <p>If you have any questions, special requirements or concerns, please send us an inquiry and/or contact our Support team ahead of purchase. Recommended alternatives for this product can be found below, along with publications, customer reviews and Q&amp;As</p> |

#### 性能

|      |  |
|------|--|
| 形式   | Liquid   |
| 存放说明 | Shipped at 4°C. Store at +4°C short term (1-2 weeks). Upon delivery aliquot. Store at -20°C or -80°C. Avoid freeze / thaw cycle. |
| 存储溶液 | pH: 7.40<br>Preservative: 0.097% Sodium azide<br>Constituent: PBS  |
| 纯度   | Protein A purified   |
| 纯化说明 | Purified from TCS. Purity >95% by SDS-PAGE.  |
| 克隆   | 单克隆  |
| 克隆编号 | MEM-226  |
| 同种型  | IgG1   |

## 应用

**The Abpromise guarantee**      **Abpromise™**承诺保证使用ab2529于以下的经测试应用

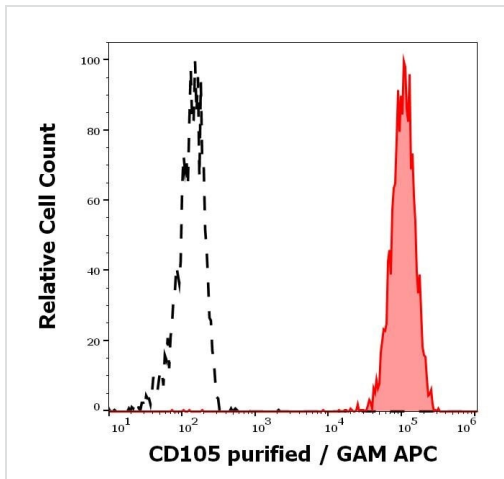
“应用说明”部分 下显示的仅为推荐的起始稀释度;实际最佳的稀释度/浓度应由使用者检定。

| 应用             | Ab评论 | 说明   |
|----------------|------|--|
| ICC/IF         |      | Use a concentration of 10 µg/ml.   |
| Sandwich ELISA |      | Use a concentration of 5 µg/ml. Can be paired for Sandwich ELISA with <b>Rabbit polyclonal to CD105 (ab21224)</b> . For sandwich ELISA, use this antibody as Capture at 5 µg/ml with <b>Rabbit polyclonal to CD105 (ab21224)</b> as Detection. |
| Flow Cyt       |      | Use a concentration of 1 - 2 µg/ml.<br><b>ab170190</b> - Mouse monoclonal IgG1, is suitable for use as an isotype control with this antibody.  |
| WB             |      | Use at an assay dependent concentration. Use under non reducing condition.   |

## 靶标

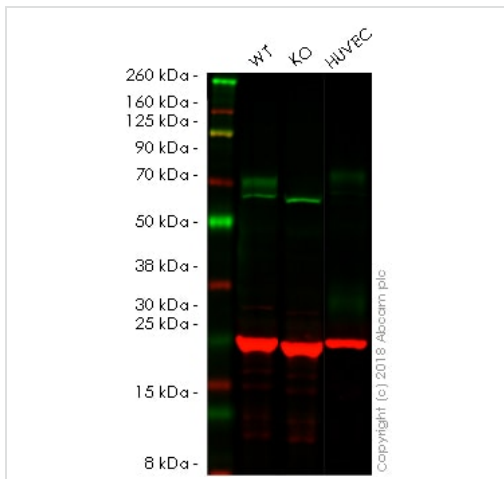
|       |   |
|-------|---|
| 功能    | Major glycoprotein of vascular endothelium. May play a critical role in the binding of endothelial cells to integrins and/or other RGD receptors.   |
| 组织特异性 | Endoglin is restricted to endothelial cells in all tissues except bone marrow.  |
| 疾病相关  | Defects in ENG are the cause of hereditary hemorrhagic telangiectasia type 1 (HHT1) [MIM:187300, 108010]; also known as Osler-Rendu-Weber syndrome 1 (ORW1). HHT1 is an autosomal dominant multisystemic vascular dysplasia, characterized by recurrent epistaxis, muco-cutaneous telangiectases, gastro-intestinal hemorrhage, and pulmonary (PAVM), cerebral (CAVM) and hepatic arteriovenous malformations; all secondary manifestations of the underlying vascular dysplasia. Although the first symptom of HHT1 in children is generally nose bleed, there is an important clinical heterogeneity. |
| 细胞定位  | Membrane.   |

## 图片



Flow Cytometry - Anti-CD105 antibody [MEM-226]  
(ab2529)

Flow cytometry analysis showing separation of HUVEC cells stained using ab2529 (concentration in sample 1.67  $\mu\text{g/ml}$ , GAM APC, red-filled) from HUVEC cells unstained by primary antibody (GAM APC, black-dashed).



Western blot - Anti-CD105 antibody [MEM-226]  
(ab2529)

**All lanes** : Anti-CD105 antibody [MEM-226] (ab2529) at 1/1000 dilution

**Lane 1** : Wild-type HeLa whole cell lysate

**Lane 2** : CD105 knockout HeLa whole cell lysate

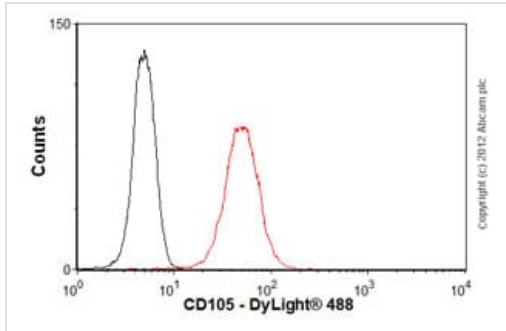
**Lane 3** : HUVEC whole cell lysate

Lysates/proteins at 20  $\mu\text{g}$  per lane.

**Lanes 1 - 3:** Merged signal (red and green). Green - ab2529 observed at 70 kDa. Red - loading control, **ab181602**, observed at 37 kDa.

ab2529 was shown to recognize ENG (Endoglin) in wild-type HeLa cells as signal was lost at the expected MW in ENG knockout cells. Additional cross-reactive bands were observed in the wild-type and knockout cells. Wild-type and ENG knockout samples were subjected to SDS-PAGE. The membrane was blocked with 3% milk. Ab2529 and **ab181602** (Rabbit anti-GAPDH loading control)

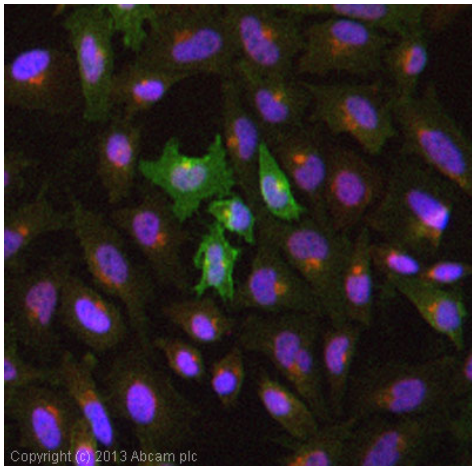
were incubated overnight at 4°C at 1/1000 dilution and 1/20000 dilution respectively. Blots were developed with Goat anti-Mouse IgG H&L (IRDye® 800CW) preabsorbed **ab216772** and Goat anti-Rabbit IgG H&L (IRDye® 680RD) preabsorbed **ab216777** secondary antibodies at 1/20000 dilution for 1 hour at room temperature before imaging.



Flow Cytometry - Anti-CD105 antibody [MEM-226] (ab2529)

Overlay histogram showing U937 (Human histiocytic lymphoma cell line) cells stained with ab2529 (red line).

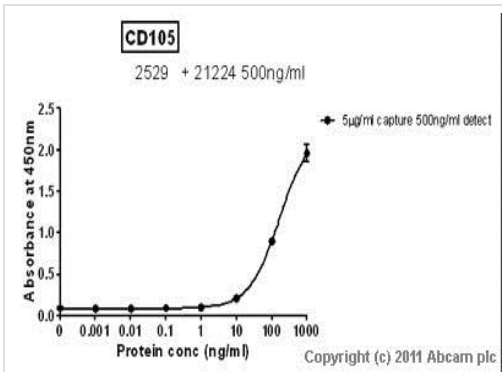
The cells were fixed with 4% paraformaldehyde (10 min) and then permeabilized with 0.1% PBS-Tween for 20 min. The cells were then incubated in 1x PBS / 10% normal goat serum / 0.3M glycine to block non-specific protein-protein interactions followed by the antibody (ab2529, 1µg/1x10<sup>6</sup> cells) for 30 min at 22°C. The secondary antibody used was DyLight® 488 goat anti-mouse IgG (H+L) (**ab96879**) at 1/500 dilution for 30 min at 22°C. Isotype control antibody (black line) was mouse IgG1 [ICIGG1] (**ab91353**, 2µg/1x10<sup>6</sup> cells) used under the same conditions. Acquisition of >5,000 events was performed. This antibody gave a positive signal in U937 cells fixed with 80% methanol (5 min)/permeabilized with 0.1% PBS-Tween for 20 min used under the same conditions.



Immunocytochemistry/ Immunofluorescence - Anti-CD105 antibody [MEM-226] (ab2529)

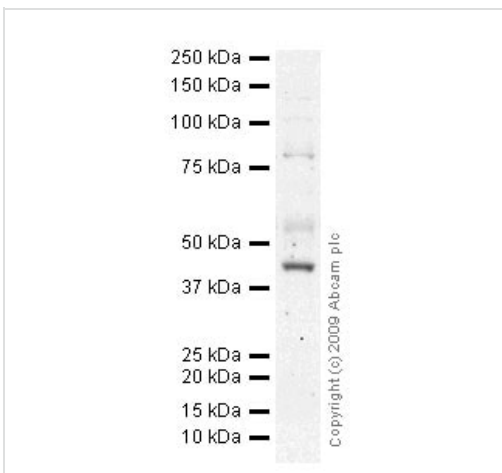
ICC/IF image of ab2529 stained HeLa (Human epithelial cell line from cervix adenocarcinoma) cells.

The cells were 4% formaldehyde fixed (10 min) and then incubated in 1% BSA / 10% normal goat serum / 0.3M glycine in 0.1% PBS-Tween for 1 hour to permeabilize the cells and block non-specific protein-protein interactions. The cells were then incubated with the antibody (ab2529, 10 µg/ml) overnight at +4°C. The secondary antibody (green) was **ab69879**, DyLight® 488 goat anti-mouse IgG (H+L) used at a 1/250 dilution for 1 hour. Alexa Fluor® 594 WGA was used to label plasma membranes (red) at a 1/200 dilution for 1 hour. DAPI was used to stain the cell nuclei (blue) at a concentration of 1.43 µM.



Sandwich ELISA - Anti-CD105 antibody [MEM-226] (ab2529)

Standard Curve for CD105 (Analyte: **CD105 protein (ab54338)**); dilution range 1pg/ml to 1ug/ml using Capture Antibody **Mouse monoclonal [MEM-226] to CD105 (ab2529)** at 5ug/ml and Detector Antibody **Rabbit polyclonal to CD105 (ab21224)** at 0.5ug/ml.



Western blot - Anti-CD105 antibody [MEM-226] (ab2529)

Anti-CD105 antibody [MEM-226] (ab2529) at 5 µg/ml + Human colon tissue lysate at 10 µg

#### Secondary

Goat polyclonal to Mouse IgG - H&L - Pre-Adsorbed (HRP) at 1/3000 dilution

**Observed band size:** 80 kDa

**Additional bands at:** 45 kDa, 55 kDa. We are unsure as to the identity of these extra bands.

**Please note:** All products are "FOR RESEARCH USE ONLY. NOT FOR USE IN DIAGNOSTIC PROCEDURES"

#### Our Abpromise to you: Quality guaranteed and expert technical support

- Replacement or refund for products not performing as stated on the datasheet
- Valid for 12 months from date of delivery
- Response to your inquiry within 24 hours
- We provide support in Chinese, English, French, German, Japanese and Spanish
- Extensive multi-media technical resources to help you
- We investigate all quality concerns to ensure our products perform to the highest standards

If the product does not perform as described on this datasheet, we will offer a refund or replacement. For full details of the Abpromise, please visit <https://www.abcam.cn/abpromise> or contact our technical team.

### **Terms and conditions**

---

- Guarantee only valid for products bought direct from Abcam or one of our authorized distributors