

Anti-CD10 antibody [EPR5904-110] ab208778

敲除验证
重组
RabMAb

[5 References](#)
[7 图像](#)

概述

产品名称	Anti-CD10抗体[EPR5904-110]
描述	兔单克隆抗体[EPR5904-110] to CD10
宿主	Rabbit
经测试应用	适用于: WB, IP, IHC-P
种属反应性	与反应: Human
免疫原	Recombinant fragment. This information is proprietary to Abcam and/or its suppliers.
阳性对照	WB: LNCaP, Raji and Ramos whole cell lysates; Human fetal kidney lysate. IHC-P: Human kidney and breast cancer tissues. IP: LNCaP whole cell lysate.
常规说明	<p>This product is a recombinant monoclonal antibody, which offers several advantages including:</p> <ul style="list-style-type: none"> - High batch-to-batch consistency and reproducibility - Improved sensitivity and specificity - Long-term security of supply - Animal-free production <p>For more information see here.</p> <p>Our RabMAb[®] technology is a patented hybridoma-based technology for making rabbit monoclonal antibodies. For details on our patents, please refer to RabMAb[®] patents.</p>

性能

形式	Liquid
存放说明	Shipped at 4°C. Store at +4°C short term (1-2 weeks). Upon delivery aliquot. Store at -20°C long term. Avoid freeze / thaw cycle.
存储溶液	<p>pH: 7.2</p> <p>Preservative: 0.01% Sodium azide</p> <p>Constituents: 59% PBS, 40% Glycerol (glycerin, glycerine), 0.05% BSA</p>
纯度	Protein A purified
克隆	单克隆
克隆编号	EPR5904-110
同种型	IgG

应用

The Abpromise guarantee **Abpromise™** 承诺保证使用ab208778于以下的经测试应用

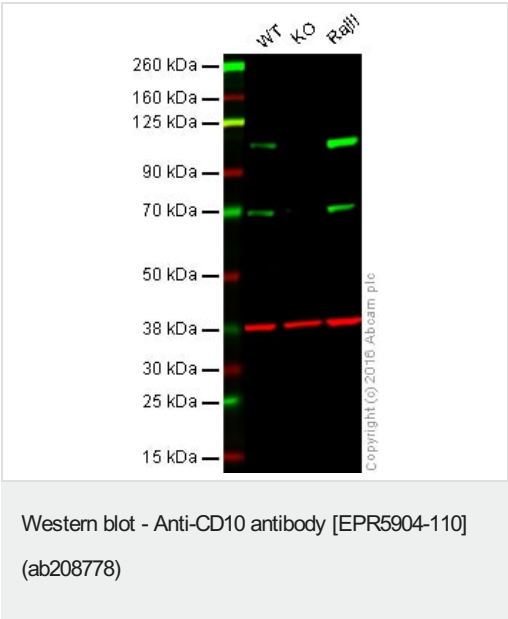
“应用说明”部分 下显示的仅为推荐的起始稀释度;实际最佳的稀释度/浓度应由使用者检定。

应用	Ab评论	说明
WB		1/1000. Detects a band of approximately 90-110 kDa (predicted molecular weight: 85 kDa).
IP		1/20.
IHC-P		1/4000. Perform heat mediated antigen retrieval with Tris/EDTA buffer pH 9.0 before commencing with IHC staining protocol.

靶标

功能	Thermolysin-like specificity, but is almost confined on acting on polypeptides of up to 30 amino acids. Biologically important in the destruction of opioid peptides such as Met- and Leu-enkephalins by cleavage of a Gly-Phe bond. Able to cleave angiotensin-1, angiotensin-2 and angiotensin 1-9. Involved in the degradation of atrial natriuretic factor (ANF). Displays UV-inducible elastase activity toward skin preelastic and elastic fibers.
序列相似性	Belongs to the peptidase M13 family.
细胞定位	Cell membrane.

图片



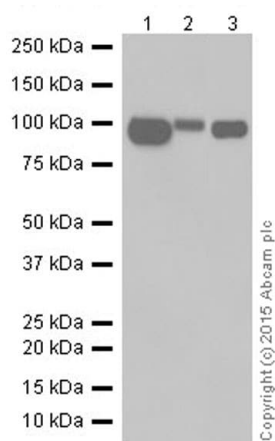
Lane 1: Wild type HAP1 whole cell lysate (20 µg)

Lane 2: CD10 knockout HAP1 whole cell lysate (20 µg)

Lane 3: RAJI whole cell lysate (20 µg)

Lanes 1 - 3: Merged signal (red and green). Green - ab208778 observed at 100 kDa. Red - loading control, **ab8245**, observed at 37 kDa.

ab208778 was shown to recognize CD10 when CD10 knockout samples were used, along with additional cross-reactive bands. Wild-type and CD10 knockout samples were subjected to SDS-PAGE. Ab208778 and **ab8245** (Mouse anti GAPDH loading control) were incubated overnight at 4°C at 100 dilution and 1/10000 dilution respectively. Blots were developed with 800CW Goat anti Rabbit and 680CW Goat anti Mouse secondary antibodies at 1/10000 dilution for 1 hour at room temperature before imaging.



Western blot - Anti-CD10 antibody [EPR5904-110]
(ab208778)

All lanes : Anti-CD10 antibody [EPR5904-110] (ab208778) at
1/1000 dilution

Lane 1 : LNCaP (Human prostate cancer cell line) whole cell lysate

Lane 2 : Raji (Human Burkitt's lymphoma cell line) whole cell lysate

Lane 3 : Ramos (Human Burkitt's lymphoma cell line) whole cell
lysate

Lysates/proteins at 10 µg per lane.

Secondary

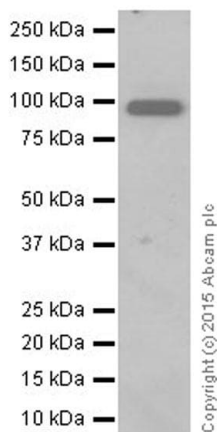
All lanes : Goat Anti-Rabbit IgG H&L (HRP) (**ab97051**) at
1/100000 dilution

Predicted band size: 85 kDa

Observed band size: 90-110 kDa

Exposure time: 15 seconds

Blocking/Dilution buffer: 5% NFDM/TBST.



Western blot - Anti-CD10 antibody [EPR5904-110]
(ab208778)

Anti-CD10 antibody [EPR5904-110] (ab208778) at 1/10000
dilution + Human fetal kidney lysate at 10 µg

Secondary

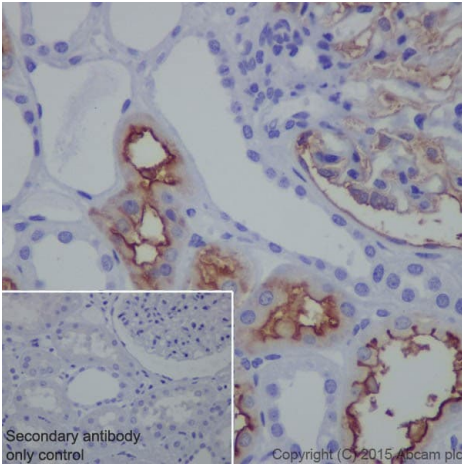
Goat Anti-Rabbit IgG Peroxidase Conjugate, specific to the non-
reduced form of IgG at 1/10000 dilution

Predicted band size: 85 kDa

Observed band size: 90-110 kDa

Exposure time: 5 seconds

Blocking/Dilution buffer: 5% NFDM/TBST.

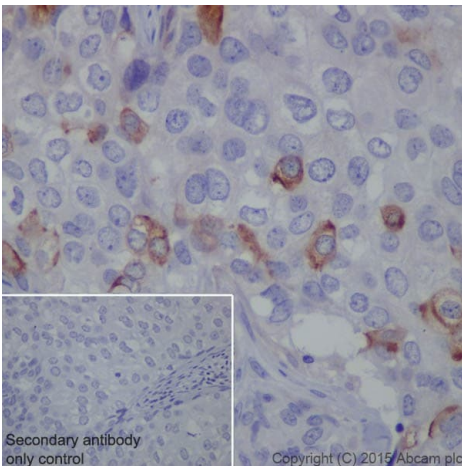


Immunohistochemistry (Formalin/PFA-fixed paraffin-embedded sections) - Anti-CD10 antibody
[EPR5904-110] (ab208778)

Immunohistochemical analysis of paraffin-embedded Human kidney tissue labeling CD10 with ab208778 at 1/4000 dilution, followed by Goat Anti-Rabbit IgG H&L (HRP) ([ab97051](#)) at 1/500 dilution. Surface membrane staining was found in the glomerular epithelium and proximal tubular cells of the Human kidney. Counter stained with Hematoxylin.

Secondary antibody only control: Used PBS instead of primary antibody, secondary antibody is [ab97051](#) at 1/500 dilution.

Perform heat mediated antigen retrieval with Tris/EDTA buffer pH 9.0 before commencing with IHC staining protocol.

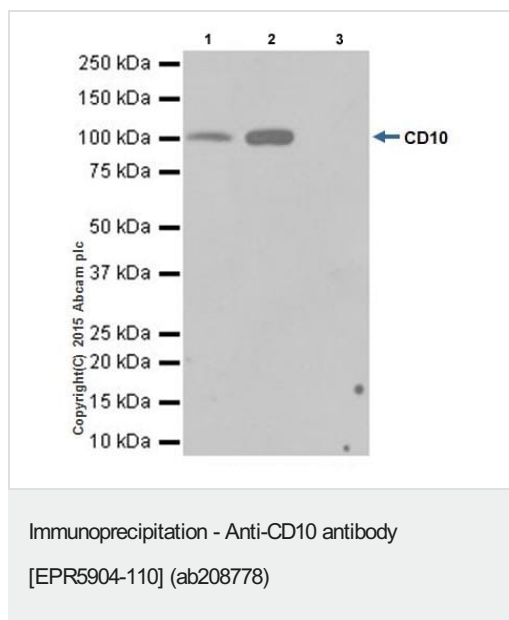


Immunohistochemistry (Formalin/PFA-fixed paraffin-embedded sections) - Anti-CD10 antibody
[EPR5904-110] (ab208778)

Immunohistochemical analysis of paraffin-embedded Human breast cancer tissue labeling CD10 with ab208778 at 1/4000 dilution, followed by Goat Anti-Rabbit IgG H&L (HRP) ([ab97051](#)) at 1/500 dilution. Membrane staining was found in the subset cells of the Human breast cancer. Counter stained with Hematoxylin.

Secondary antibody only control: Used PBS instead of primary antibody, secondary antibody is [ab97051](#) at 1/500 dilution.

Perform heat mediated antigen retrieval with Tris/EDTA buffer pH 9.0 before commencing with IHC staining protocol.



CD10 was immunoprecipitated from 1 mg of LNCaP (Human prostate cancer cell line) whole cell lysate with ab208778 at 1/20 dilution.

Western blot was performed from the immunoprecipitate using ab208778 at 1/1000 dilution.

VeriBlot for IP Detection Reagent (HRP) ([ab131366](#)), was used for detection at 1/10000 dilution.

Lane 1: LNCaP whole cell lysate, 10 µg (Input).

Lane 2: ab208778 IP in LNCaP whole cell lysate.

Lane 3: Rabbit IgG, monoclonal [EPR25A] - Isotype Control ([ab172730](#)) instead of ab208778 in LNCaP whole cell lysate.

Blocking and dilution buffer and concentration: 5% NFDM/TBST.

Exposure time: 3 minutes.

Why choose a recombinant antibody?

<p>Research with confidence Consistent and reproducible results</p>	<p>Long-term and scalable supply Recombinant technology</p>
<p>Success from the first experiment Confirmed specificity</p>	<p>Ethical standards compliant Animal-free production</p>

Anti-CD10 antibody [EPR5904-110] (ab208778)

Please note: All products are "FOR RESEARCH USE ONLY. NOT FOR USE IN DIAGNOSTIC PROCEDURES"

Our Abpromise to you: Quality guaranteed and expert technical support

- Replacement or refund for products not performing as stated on the datasheet

- Valid for 12 months from date of delivery
- Response to your inquiry within 24 hours
- We provide support in Chinese, English, French, German, Japanese and Spanish
- Extensive multi-media technical resources to help you
- We investigate all quality concerns to ensure our products perform to the highest standards

If the product does not perform as described on this datasheet, we will offer a refund or replacement. For full details of the Abpromise, please visit <https://www.abcam.cn/abpromise> or contact our technical team.

Terms and conditions

- Guarantee only valid for products bought direct from Abcam or one of our authorized distributors