

### Anti-CCR8 antibody [EPR23744-160] ab259792

重组 RabMAb

#### 1 图像

#### 概述

产品名称	Anti-CCR8抗体[EPR23744-160]
描述	兔单克隆抗体[EPR23744-160] to CCR8
宿主	Rabbit
经测试应用	<b>适用于:</b> Flow Cyt <b>不适用于:</b> ICC/IF, IHC-P, IP or WB
种属反应性	<b>与反应:</b> Human
免疫原	Synthetic peptide. This information is proprietary to Abcam and/or its suppliers.
阳性对照	Flow Cyt: Human peripheral blood mononuclear cell.
常规说明	This product is a recombinant monoclonal antibody, which offers several advantages including: <ul style="list-style-type: none"><li>- High batch-to-batch consistency and reproducibility</li><li>- Improved sensitivity and specificity</li><li>- Long-term security of supply</li><li>- Animal-free production</li></ul> For more information <a href="#">see here</a> . Our RabMAb <sup>®</sup> technology is a patented hybridoma-based technology for making rabbit monoclonal antibodies. For details on our patents, please refer to <a href="#">RabMAb<sup>®</sup> patents</a> .

#### 性能

形式	Liquid
存放说明	Shipped at 4°C. Store at +4°C short term (1-2 weeks). Upon delivery aliquot. Store at -20°C long term. Avoid freeze / thaw cycle.
存储溶液	Preservative: 0.01% Sodium azide Constituents: 59.94% PBS, 40% Glycerol (glycerin, glycerine), 0.05% BSA
纯度	Protein A purified
克隆	单克隆
克隆编号	EPR23744-160
同种型	IgG

## 应用

### The Abpromise guarantee

**Abpromise™**承诺保证使用ab259792于以下的经测试应用

“应用说明”部分 下显示的仅为推荐的起始稀释度;实际最佳的稀释度/浓度应由使用者检定。

应用	Ab评论	说明
Flow Cyt		1/500.

### 应用说明

Is unsuitable for ICC/IF, IHC-P, IP or WB.

## 靶标

### 功能

Receptor for the chemokine CCL1/SCYA1/I-309. May regulate monocyte chemotaxis and thymic cell line apoptosis. Alternative coreceptor with CD4 for HIV-1 infection.

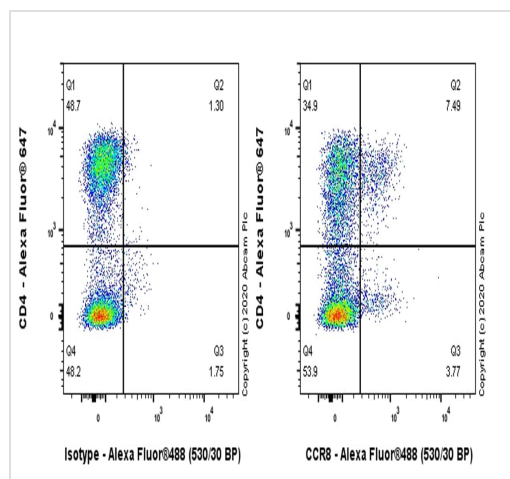
### 序列相似性

Belongs to the G-protein coupled receptor 1 family.

### 细胞定位

Cell membrane.

## 图片



Flow Cytometry - Anti-CCR8 antibody [EPR23744-160] (ab259792)

Flow cytometric analysis of human peripheral blood mononuclear cell (PBMC) cells labelling CCR8 with ab259792 at 1/500 dilution (0.1 µg)/ Right compared with a Rabbit monoclonal IgG ([ab172730](#)) / Left isotype control.

Goat anti rabbit IgG (Alexa Fluor® 488, [ab150077](#)) at 1/2000 dilution was used as the secondary antibody. Cells were stained with rabbit IgG or ab259792. Then stained with anti-CD4 conjugated to Alexa Fluor® 647.

Gated on viable cells.

**Please note:** All products are "FOR RESEARCH USE ONLY. NOT FOR USE IN DIAGNOSTIC PROCEDURES"

### Our Abpromise to you: Quality guaranteed and expert technical support

- Replacement or refund for products not performing as stated on the datasheet
- Valid for 12 months from date of delivery
- Response to your inquiry within 24 hours
- We provide support in Chinese, English, French, German, Japanese and Spanish
- Extensive multi-media technical resources to help you

- We investigate all quality concerns to ensure our products perform to the highest standards

If the product does not perform as described on this datasheet, we will offer a refund or replacement. For full details of the Abpromise, please visit <https://www.abcam.cn/abpromise> or contact our technical team.

#### **Terms and conditions**

---

- Guarantee only valid for products bought direct from Abcam or one of our authorized distributors