


Anti-CCR3 antibody [Y31] ab32512

重组 RabMAb

★★★★☆ **1 Abreviews** **22 References** **3 图像**

概述

| | |
|--------------|--------------------------------------------------------------------------------------------------------------------------------------------------------------------------------------------------------------------------------------------------------------------------------------------------------------------------------------------------------------------------------------------------------------------------------------------------------------------------------------------------------------------------------------------------------------------------------------------------|
| 产品名称 | Anti-CCR3抗体[Y31] |
| 描述 | 兔单克隆抗体[Y31] to CCR3 |
| 宿主 | Rabbit |
| 特异性 | The mouse and rat recommendation is for WB use only. We do not guarantee IHC-P for mouse and rat. |
| 经测试应用 | 适用于: WB, IHC-P 不适用于: Flow Cyt, ICC/IF or IP |
| 种属反应性 | 与反应: Human 预测可用于: Mouse, Rat, Macaque monkey  |
| 免疫原 | Synthetic peptide. This information is proprietary to Abcam and/or its suppliers. |
| 阳性对照 | K562 and Daudi cell lysates and human liver tissue. |
| 常规说明 | This product is a recombinant monoclonal antibody, which offers several advantages including: <ul style="list-style-type: none"> - High batch-to-batch consistency and reproducibility - Improved sensitivity and specificity - Long-term security of supply - Animal-free production For more information see here . Our RabMAb [®] technology is a patented hybridoma-based technology for making rabbit monoclonal antibodies. For details on our patents, please refer to RabMAb[®] patents . |

性能

| | |
|-------------|-------------------------------------------------------------------------------------------------------------------------|
| 形式 | Liquid |
| 存放说明 | Shipped at 4°C. Store at +4°C short term (1-2 weeks). Upon delivery aliquot. Store at -20°C. Avoid freeze / thaw cycle. |
| 存储溶液 | pH: 7.20 Preservative: 0.01% Sodium azide Constituents: 49% PBS, 50% Glycerol (glycerin, glycerine), 0.05% BSA |
| 纯度 | Protein A purified |

| | |
|------|-----|
| 克隆 | 单克隆 |
| 克隆编号 | Y31 |
| 同种型 | IgG |

应用

The Abpromise guarantee **Abpromise™**承诺保证使用ab32512于以下的经测试应用

“应用说明”部分下显示的仅为推荐的起始稀释度;实际最佳的稀释度/浓度应由使用者检定。

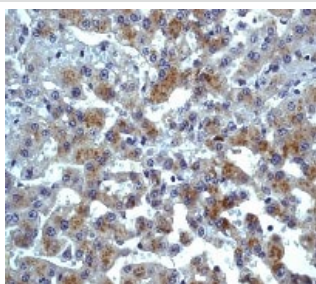
| 应用 | Ab评论 | 说明 |
|-------|-----------|--------------------------------------------------------------------------------------------------------------------------------------------------------------------------------------------------------------|
| WB | ★★★★★ (1) | 1/500. Predicted molecular weight: 43 kDa. |
| IHC-P | | 1/100. Perform heat mediated antigen retrieval before commencing with IHC staining protocol. The mouse and rat recommendation is based on the WB results. We do not guarantee IHC-P for mouse and rat. |

应用说明 Is unsuitable for Flow Cyt, ICC/IF or IP.

靶标

| | |
|--------------|-------------------------------------------------------------------------------------------------------------------------------------------------------------------------------------------------------------------------------------------------|
| 功能 | Receptor for a C-C type chemokine. Binds to eotaxin, eotaxin-3, MCP-3, MCP-4, RANTES and MIP-1 delta. Subsequently transduces a signal by increasing the intracellular calcium ions level. Alternative coreceptor with CD4 for HIV-1 infection. |
| 组织特异性 | In eosinophils as well as trace amounts in neutrophils and monocytes. |
| 序列相似性 | Belongs to the G-protein coupled receptor 1 family. |
| 细胞定位 | Cell membrane. |

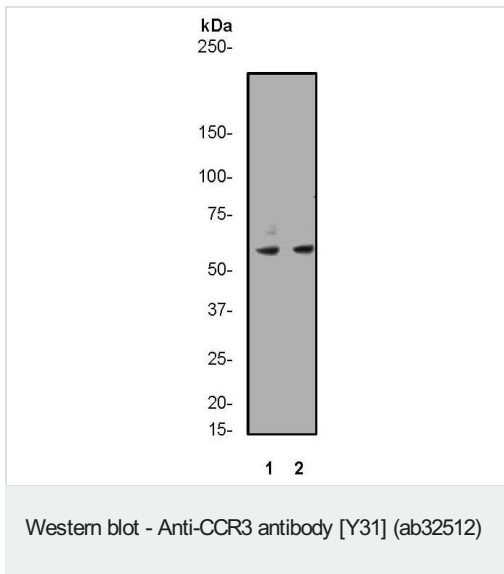
图片



Immunohistochemical analysis of paraffin-embedded human liver tissue using ab32512 at 1/100 dilution.

Perform heat mediated antigen retrieval before commencing with IHC staining protocol.

Immunohistochemistry (Formalin/PFA-fixed paraffin-embedded sections) - Anti-CCR3 antibody [Y31] (ab32512)



All lanes : Anti-CCR3 antibody [Y31] (ab32512) at 1/500 dilution





Lane 1 : K562 cell lysate

Lane 2 : Daudi cell lysate

Predicted band size: 43 kDa

Observed band size: 60 kDa

Why choose a recombinant antibody?

| | |
|------------------------------------------------------------------------------------------------------------------------------------------------------------------|----------------------------------------------------------------------------------------------------------------------------------------------------------|
|  <p>Research with confidence Consistent and reproducible results</p> |  <p>Long-term and scalable supply Recombinant technology</p> |
|  <p>Success from the first experiment Confirmed specificity</p> |  <p>Ethical standards compliant Animal-free production</p> |

Anti-CCR3 antibody [Y31] (ab32512)

Please note: All products are "FOR RESEARCH USE ONLY. NOT FOR USE IN DIAGNOSTIC PROCEDURES"

Our Abpromise to you: Quality guaranteed and expert technical support

- Replacement or refund for products not performing as stated on the datasheet
- Valid for 12 months from date of delivery
- Response to your inquiry within 24 hours
- We provide support in Chinese, English, French, German, Japanese and Spanish
- Extensive multi-media technical resources to help you
- We investigate all quality concerns to ensure our products perform to the highest standards

If the product does not perform as described on this datasheet, we will offer a refund or replacement. For full details of the Abpromise, please visit <https://www.abcam.cn/abpromise> or contact our technical team.

Terms and conditions

- Guarantee only valid for products bought direct from Abcam or one of our authorized distributors