

Anti-CCR2 antibody [EPR20844] ab216863

重组 RabMAb

1 References **7 图像**

概述

产品名称	Anti-CCR2抗体[EPR20844]
描述	兔单克隆抗体[EPR20844] to CCR2
宿主	Rabbit
经测试应用	适用于: ICC/IF, Flow Cyt
种属反应性	与反应: Mouse, Recombinant fragment
免疫原	Synthetic peptide. This information is proprietary to Abcam and/or its suppliers.
阳性对照	ICC/IF: HEK-293T lysate transfected with GFP-tagged CCR2. Flow Cyt: HEK-293T cells transfected with GFP-tagged CCR2 and mouse primary splenocytes. Mouse bone marrow and spleen
常规说明	<p>This product is a recombinant monoclonal antibody, which offers several advantages including:</p> <ul style="list-style-type: none"> - High batch-to-batch consistency and reproducibility - Improved sensitivity and specificity - Long-term security of supply - Animal-free production <p>For more information see here.</p> <p>Our RabMAb[®] technology is a patented hybridoma-based technology for making rabbit monoclonal antibodies. For details on our patents, please refer to RabMAb[®] patents.</p>

性能

形式	Liquid
存放说明	Shipped at 4°C. Store at +4°C short term (1-2 weeks). Upon delivery aliquot. Store at -20°C long term. Avoid freeze / thaw cycle.
存储溶液	<p>pH: 7.2</p> <p>Preservative: 0.01% Sodium azide</p> <p>Constituents: PBS, 40% Glycerol (glycerin, glycerine), 0.05% BSA</p>
纯度	Protein A purified
克隆	单克隆
克隆编号	EPR20844

同种型

IgG

应用

The Abpromise guarantee

Abpromise™承诺保证使用ab216863于以下的经测试应用

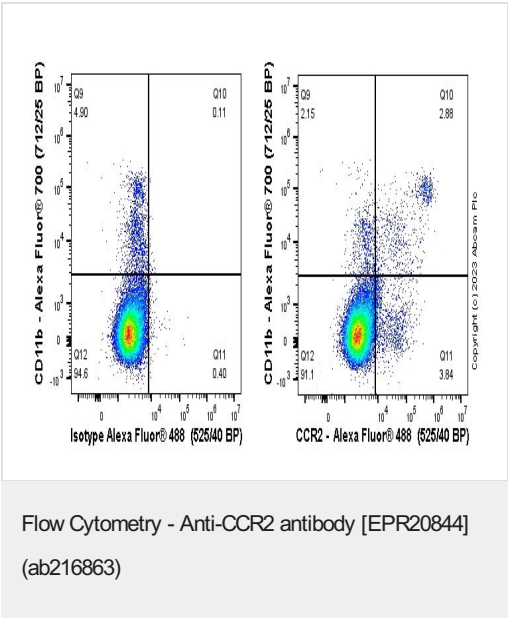
“应用说明”部分 下显示的仅为推荐的起始稀释度;实际最佳的稀释度/浓度应由使用者检定。

应用	Ab评论	说明
ICC/IF		1/100.
Flow Cyt		1/600 - 1/644.

靶标

功能	Receptor for the MCP-1, MCP-3 and MCP-4 chemokines. Transduces a signal by increasing the intracellular calcium ions level. Alternative coreceptor with CD4 for HIV-1 infection.
序列相似性	Belongs to the G-protein coupled receptor 1 family.
翻译后修饰	N-glycosylated.
细胞定位	Cell membrane.

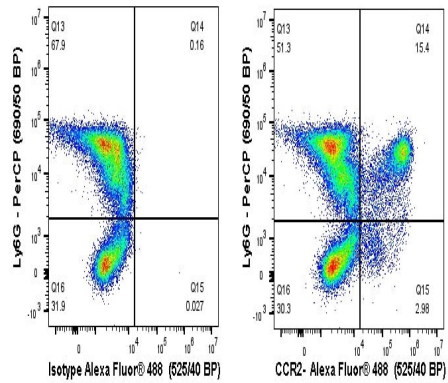
图片



Flow cytometry staining of C57 BL/6 mouse splenocytes with ab216863 (right) or Rabbit monoclonal IgG ([ab172730](#)) (left). Cells were incubated for 30 min on ice in 1x PBS containing 10µg/ml anti CD16/CD32 and 10% normal goat serum to block FC receptors and non-specific protein-protein interaction followed by the antibody ab216863 or Rabbit monoclonal IgG ([ab172730](#)) (1x 10⁶ in 100 µl at 1.0 µg/ml (1/644)) for 30min on ice. The cells were simultaneously stained with CD11b.

The secondary antibody Goat Anti-Rabbit IgG H&L (Alexa Fluor® 488) preadsorbed was incubated at 1/4000 for 30min on ice.

Acquisition of >30000 events were collected using a 50 mW Blue laser (488nm) and 525/40 bandpass filter. Events were gated on viable cells.

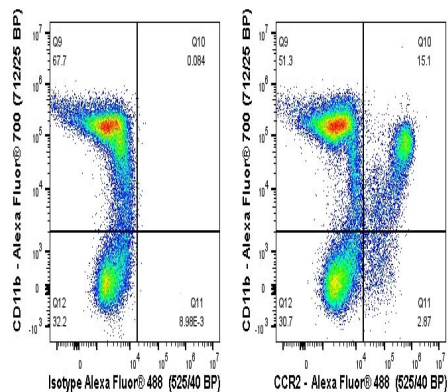


Flow Cytometry - Anti-CCR2 antibody [EPR20844]
(ab216863)

Flow cytometry staining of C57 BL/6 mouse bone marrow cells with ab216863 (right) or Rabbit monoclonal IgG (**ab172730**) (left). Cells were incubated for 30 min on ice in 1x PBS containing 10µg/ml anti CD16/CD32 and 10% normal goat serum to block FC receptors and non-specific protein-protein interaction followed by the antibody ab216863 or Rabbit monoclonal IgG (**ab172730**) (1×10^6 in 100 µl at 1.0 µg/ml (1/624)) for 30min on ice. The cells were simultaneously stained with Ly6G.

The secondary antibody Goat Anti-Rabbit IgG H&L (Alexa Fluor® 488) preadsorbed was incubated at 1/4000 for 30min on ice.

Acquisition of >30000 events were collected using a 50 mW Blue laser (488nm) and 525/40 bandpass filter. Events were gated on viable cells.

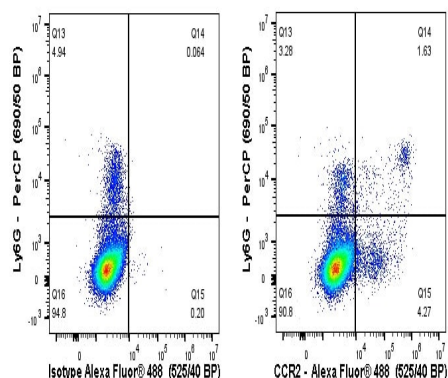


Flow Cytometry - Anti-CCR2 antibody [EPR20844]
(ab216863)

Flow cytometry staining of C57 BL/6 mouse bone marrow cells with ab216863 (right) or Rabbit monoclonal IgG (**ab172730**) (left). Cells were incubated for 30 min on ice in 1x PBS containing 10µg/ml anti CD16/CD32 and 10% normal goat serum to block FC receptors and non-specific protein-protein interaction followed by the antibody ab216863 or Rabbit monoclonal IgG (**ab172730**) (1×10^6 in 100 µl at 1.0 µg/ml (1/624)) for 30min on ice. The cells were simultaneously stained with CD11b.

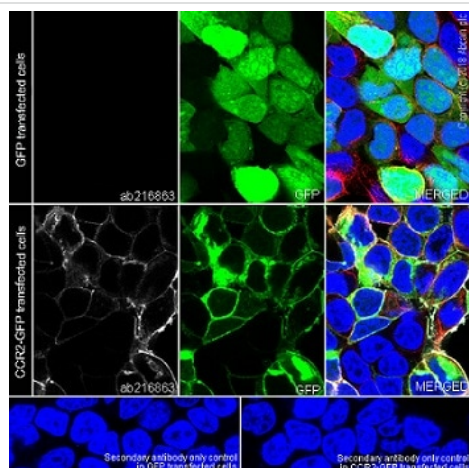
The secondary antibody Goat Anti-Rabbit IgG H&L (Alexa Fluor® 488) preadsorbed was incubated at 1/4000 for 30min on ice.

Acquisition of >30000 events were collected using a 50 mW Blue laser (488nm) and 525/40 bandpass filter. Events were gated on viable cells.



Flow Cytometry - Anti-CCR2 antibody [EPR20844]
(ab216863)

Flow cytometry staining of C57 BL/6 mouse splenocytes with ab216863 (right) or Rabbit monoclonal IgG (**ab172730**) (left). Cells were incubated for 30 min on ice in 1x PBS containing 10µg/ml anti CD16/CD32 and 10% normal goat serum to block FC receptors and non-specific protein-protein interaction followed by the antibody ab216863 or Rabbit monoclonal IgG (**ab172730**) 1×10^6 in 100 µl at 1.0 µg/ml (1/644) for 30min on ice. The cells were simultaneously stained with Ly6G. The secondary antibody Goat Anti-Rabbit IgG H&L (Alexa Fluor® 488) preadsorbed was incubated at 1/4000 for 30min on ice. Acquisition of >30000 events were collected using a n/a. Events were gated on viable cells.



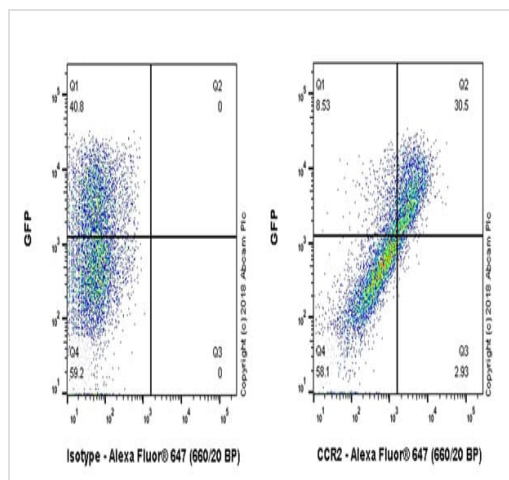
Immunocytochemistry/ Immunofluorescence - Anti-CCR2 antibody [EPR20844] (ab216863)

Immunofluorescent analysis of 4% paraformaldehyde-fixed, 0.1% Triton X-100 permeabilized HEK-293T (human embryonic kidney epithelial cell) cells labelling CCR2 with ab216863 at 1/100 dilution, followed by Alexa Fluor® 647 Goat anti-Rabbit secondary (**ab150079**) secondary antibody at 1/1000 dilution (green). Confocal image showing membranous staining in 293T cells transfected with GFP-tagged CCR2 expression vector. DAPI was used as the nuclear counterstain (Blue).

Secondary antibody only control:

Control 1: Alexa Fluor® 647 Goat anti-Rabbit secondary (**ab150079**) secondary antibody in GFP transfected HEK-293T cells.

Control 2: Alexa Fluor® 647 Goat anti-Rabbit secondary (**ab150079**) secondary antibody in CCR2-GFP transfected cells.



Flow Cytometry - Anti-CCR2 antibody [EPR20844]
(ab216863)

Flow cytometric analysis of HEK-293T (human embryonic kidney epithelial cell) transfected with GFP-tagged CCR2 expression vector, cell line labelling CCR2 with ab216863 at 1/600 dilution (Right) and an isotype control Rabbit monoclonal IgG (**ab172730**) (Left). Goat anti rabbit IgG (Alexa Fluor® 488, **ab150077**) at 1/2000 was used as the secondary antibody. Gated on viable cells. Only GFP(+) population give a positive signal.

Why choose a recombinant antibody?



Research with confidence
Consistent and reproducible results



Long-term and scalable supply
Recombinant technology



Success from the first experiment
Confirmed specificity



Ethical standards compliant
Animal-free production

Anti-CCR2 antibody [EPR20844] (ab216863)

Please note: All products are "FOR RESEARCH USE ONLY. NOT FOR USE IN DIAGNOSTIC PROCEDURES"

Our Abpromise to you: Quality guaranteed and expert technical support

- Replacement or refund for products not performing as stated on the datasheet
- Valid for 12 months from date of delivery
- Response to your inquiry within 24 hours
- We provide support in Chinese, English, French, German, Japanese and Spanish
- Extensive multi-media technical resources to help you
- We investigate all quality concerns to ensure our products perform to the highest standards

If the product does not perform as described on this datasheet, we will offer a refund or replacement. For full details of the Abpromise, please visit <https://www.abcam.cn/abpromise> or contact our technical team.

Terms and conditions

- Guarantee only valid for products bought direct from Abcam or one of our authorized distributors