

Anti-CC2D1A antibody [EPR18421] ab191472

重组 RabMAb

2 References 6 图像

概述

产品名称	Anti-CC2D1A抗体[EPR18421]
描述	兔单克隆抗体[EPR18421] to CC2D1A
宿主	Rabbit
经测试应用	适用于: Flow Cyt (Intra), ICC/IF, WB
种属反应性	与反应: Mouse, Rat, Human
免疫原	Recombinant fragment. This information is proprietary to Abcam and/or its suppliers.
阳性对照	WB: HeLa, HEK-293, Jurkat, MCF7, C6, Raw264.7, PC12, NIH 3T3 cell lysates. Mouse brain lysate. ICC/IF: HeLa cells. Flow Cyt (intra): HeLa cells.
常规说明	<p>This product is a recombinant monoclonal antibody, which offers several advantages including:</p> <ul style="list-style-type: none">- High batch-to-batch consistency and reproducibility- Improved sensitivity and specificity- Long-term security of supply- Animal-free production <p>For more information see here.</p> <p>Our RabMAb[®] technology is a patented hybridoma-based technology for making rabbit monoclonal antibodies. For details on our patents, please refer to RabMAb[®] patents.</p>

性能

形式	Liquid
存放说明	Shipped at 4°C. Store at +4°C short term (1-2 weeks). Upon delivery aliquot. Store at -20°C. Avoid freeze / thaw cycle.
存储溶液	pH: 7.2 Preservative: 0.01% Sodium azide Constituents: 59% PBS, 40% Glycerol (glycerin, glycerine), 0.05% BSA
纯度	Protein A purified
克隆	单克隆
克隆编号	EPR18421
同种型	IgG

应用

The Abpromise guarantee

Abpromise™ 承诺保证使用 ab191472 于以下的经测试应用

“应用说明”部分 下显示的仅为推荐的起始稀释度;实际最佳的稀释度/浓度应由使用者检定。

应用	Ab评论	说明
Flow Cyt (Intra)		1/250.
ICC/IF		1/150.
WB		1/5000. Detects a band of approximately 130 kDa (predicted molecular weight: 104 kDa).

靶标

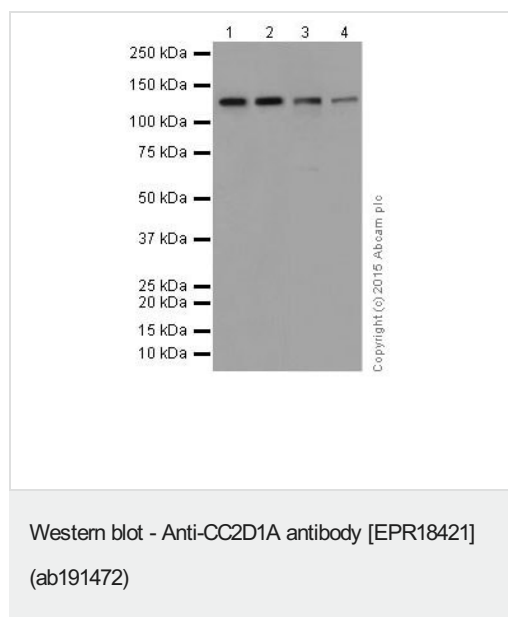
相关性

CC2D1A belongs to the CC2D1 family. It contains one C2 domain. It is a transcription factor that binds specifically to the FRE (five repressor element) and represses HTR1A gene transcription in neuronal cells. The combination of calcium and ATP specifically inactivates the binding with FRE. CC2D1A may play a role in the altered regulation of HTR1A associated with anxiety and major depression. It also mediates HDAC-independent repression of HTR1A promoter in neuronal cell. There are three named isoforms. Defects in CC2D1A are the cause of non-syndromic mental retardation autosomal recessive type 3 (MRT3). Patients display severe mental retardation and psychomotor development delay in early childhood. Non-syndromic mental retardation patients do not manifest other clinical signs.

细胞定位

Cytoplasm. Nucleus.

图片



All lanes : Anti-CC2D1A antibody [EPR18421] (ab191472) at 1/20000 dilution

Lane 1 : Hela (Human epithelial cells from cervix adenocarcinoma) whole cell lysate

Lane 2 : HEK-293 (Human epithelial cells from embryonic kidney) whole cell lysate

Lane 3 : Jurkat (Human T cell leukemia cells from peripheral blood) whole cell lysate

Lane 4 : MCF7 (Human breast adenocarcinoma cell line) whole cell lysate

Lysates/proteins at 20 µg per lane.

Secondary

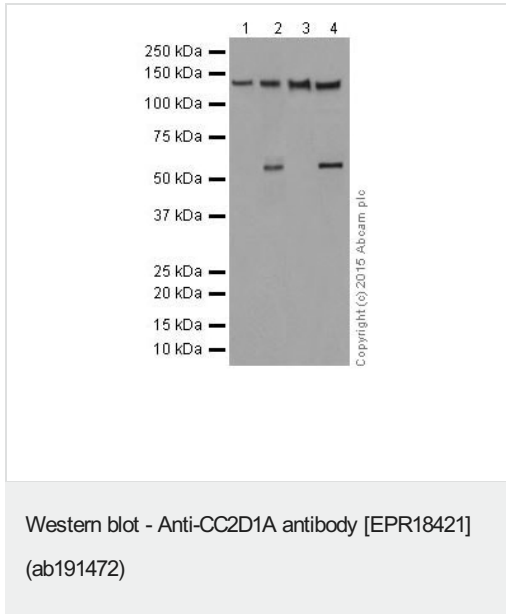
All lanes : Goat Anti-Rabbit IgG H&L (HRP) (**ab97051**) at 1/1000 dilution

Predicted band size: 104 kDa

Observed band size: 130 kDa

Exposure time: 5 seconds

5% NFDm/TBST: Blocking and diluting buffer.



All lanes : Anti-CC2D1A antibody [EPR18421] (ab191472) at 1/5000 dilution

Lane 1 : C6 (Rat glial tumor cells) whole cell lysate

Lane 2 : RAW 264.7 (Mouse macrophage cells transformed with Abelson murine leukemia virus) whole cell lysate

Lane 3 : PC12 (Rat adrenal gland pheochromocytoma) whole cell lysate

Lane 4 : NIH/3T3 (Mouse embryo fibroblast cells) whole cell lysate

Lysates/proteins at 10 µg per lane.

Secondary

All lanes : Goat Anti-Rabbit IgG H&L (HRP) ([ab97051](#)) at 1/1000 dilution

Predicted band size: 104 kDa

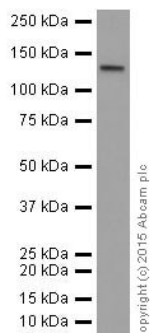
Observed band size: 130,67 kDa

Exposure time: 5 seconds

5% NFDm/TBST: Blocking and diluting buffer.

The band at 67KD is an isoform of CC2D1A.

Rogaeva A and Albert PR. Eur J Neurosci. 2007; 26(4):965-974.



Western blot - Anti-CC2D1A antibody [EPR18421] (ab191472)

Anti-CC2D1A antibody [EPR18421] (ab191472) at 1/20000 dilution + Mouse brain tissue lysate at 10 µg

Secondary

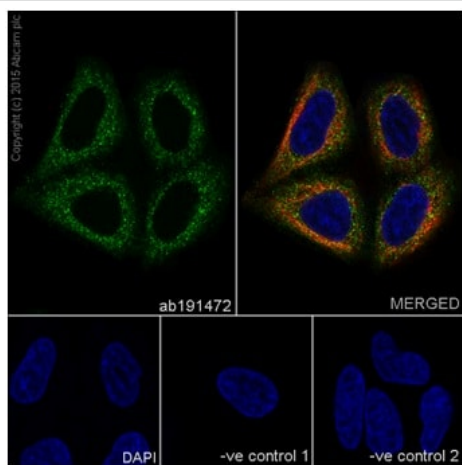
Goat Anti-Rabbit IgG H&L (HRP) ([ab97051](#)) at 1/1000 dilution

Predicted band size: 104 kDa

Observed band size: 130 kDa

Exposure time: 10 seconds

5% NFDm/TBST: Blocking and diluting buffer.



Immunocytochemistry/ Immunofluorescence - Anti-CC2D1A antibody [EPR18421] (ab191472)

Immunofluorescent analysis of 4% paraformaldehyde-fixed, 0.1% Triton X-100 permeabilized HeLa (Human epithelial cells from cervix adenocarcinoma) cells labeling CC2D1A with ab191472 at 1/150 dilution, followed by Goat anti-rabbit IgG (Alexa Fluor® 488) ([ab150077](#)) secondary antibody at 1/1000 dilution (green).

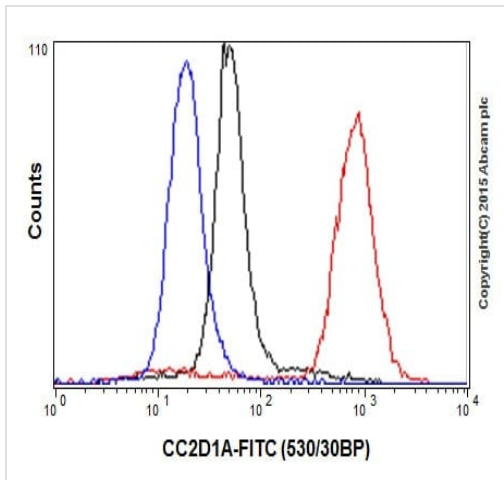
Confocal image showing cytoplasm staining on HeLa cell line.

The nuclear counter stain is DAPI (blue).

Tubulin is detected with [ab7291](#) (anti-Tubulin mouse mAb) at 1/1000 dilution and [ab150120](#) (AlexaFluor®594 Goat anti-Mouse secondary) at 1/1000 dilution (red).

The negative controls are as follows:





1. ab191472 at 1/150 dilution followed by [ab150120](#) (AlexaFluor®594 Goat anti-Mouse secondary) at 1/1000 dilution.
2. [ab7291](#) (anti-Tubulin mouse mAb) at 1/1000 dilution followed by [ab150077](#) (Alexa Fluor®488 Goat Anti-Rabbit IgG H&L) at 1/1000 dilution.



Intracellular flow cytometric analysis of 4% paraformaldehyde-fixed HeLa (Human epithelial cells from cervix adenocarcinoma) cells labeling CC2D1A with ab191472 at 1/250 dilution (red) compared with a rabbit monoclonal IgG isotype control (**ab172730**; black) and an unlabelled control (cells without incubation with primary antibody and secondary antibody; blue). Goat anti rabbit IgG (FITC) at 1/500 dilution was used as the secondary antibody.

Flow Cytometry (Intracellular) - Anti-CC2D1A antibody [EPR18421] (ab191472)

Why choose a recombinant antibody?

 <p>Research with confidence Consistent and reproducible results</p>	 <p>Long-term and scalable supply Recombinant technology</p>
 <p>Success from the first experiment Confirmed specificity</p>	 <p>Ethical standards compliant Animal-free production</p>

Anti-CC2D1A antibody [EPR18421] (ab191472)

Please note: All products are "FOR RESEARCH USE ONLY. NOT FOR USE IN DIAGNOSTIC PROCEDURES"

Our Abpromise to you: Quality guaranteed and expert technical support

- Replacement or refund for products not performing as stated on the datasheet
- Valid for 12 months from date of delivery
- Response to your inquiry within 24 hours
- We provide support in Chinese, English, French, German, Japanese and Spanish
- Extensive multi-media technical resources to help you
- We investigate all quality concerns to ensure our products perform to the highest standards

If the product does not perform as described on this datasheet, we will offer a refund or replacement. For full details of the Abpromise, please visit <https://www.abcam.cn/abpromise> or contact our technical team.

Terms and conditions

- Guarantee only valid for products bought direct from Abcam or one of our authorized distributors