


Anti-CBS antibody ab126320

2 图像

概述

产品名称	Anti-CBS抗体
描述	兔多克隆抗体to CBS
宿主	Rabbit
经测试应用	适用于: ICC/IF, WB
种属反应性	与反应: Human 预测可用于: Chimpanzee, Macaque monkey, Gorilla, Orangutan 
免疫原	Synthetic peptide. This information is proprietary to Abcam and/or its suppliers.
阳性对照	This antibody gave a positive signal in Human Liver tissue lysate. This antibody gave a positive result when used in the following methanol fixed cell lines: HeLa.
常规说明	<p>The Life Science industry has been in the grips of a reproducibility crisis for a number of years. Abcam is leading the way in addressing this with our range of recombinant monoclonal antibodies and knockout edited cell lines for gold-standard validation. Please check that this product meets your needs before purchasing.</p> <p>If you have any questions, special requirements or concerns, please send us an inquiry and/or contact our Support team ahead of purchase. Recommended alternatives for this product can be found below, along with publications, customer reviews and Q&As</p>

性能

形式	Liquid
存放说明	Shipped at 4°C. Store at +4°C short term (1-2 weeks). Upon delivery aliquot. Store at -20°C or -80°C. Avoid freeze / thaw cycle.
存储溶液	pH: 7.40 Preservative: 0.02% Sodium azide Constituent: PBS Batches of this product that have a concentration < 1mg/ml may have BSA added as a stabilising agent. If you would like information about the formulation of a specific lot, please contact our scientific support team who will be happy to help.
纯度	Immunogen affinity purified
克隆	多克隆

同种型

IgG

应用

The Abpromise guarantee **Abpromise™**承诺保证使用ab126320于以下的经测试应用

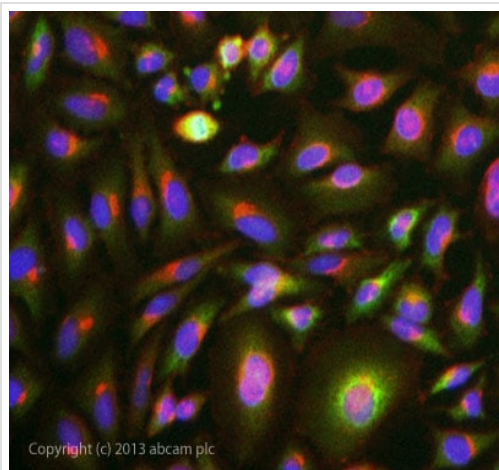
“应用说明”部分 下显示的仅为推荐的起始稀释度;实际最佳的稀释度/浓度应由使用者检定。

应用	Ab评论	说明
ICC/IF		Use a concentration of 5 µg/ml.
WB		Use a concentration of 1 µg/ml. Detects a band of approximately 64 kDa (predicted molecular weight: 60 kDa). Abcam recommends using milk as the blocking agent - 3%.

靶标

功能	Only known pyridoxal phosphate-dependent enzyme that contains heme. Important regulator of hydrogen sulfide, especially in the brain, utilizing cysteine instead of serine to catalyze the formation of hydrogen sulfide. Hydrogen sulfide is a gastratransmitter with signaling and cytoprotective effects such as acting as a neuromodulator in the brain to protect neurons against hypoxic injury.
组织特异性	In the adult strongly expressed in liver and pancreas, some expression in heart and brain, weak expression in lung and kidney. In the fetus, expressed in brain, liver and kidney.
通路	Amino-acid biosynthesis; L-cysteine biosynthesis; L-cysteine from L-homocysteine and L-serine: step 1/2.
疾病相关	Defects in CBS are the cause of cystathionine beta-synthase deficiency (CBS) [MIM:236200]. CBS is an enzymatic deficiency resulting in altered sulfur metabolism and homocystinuria. The clinical features of untreated homocystinuria due to CBS deficiency include myopia, ectopia lentis, mental retardation, skeletal anomalies resembling Marfan syndrome, and thromboembolic events. Light skin and hair can also be present. Biochemical features include increased urinary homocystine and methionine.
序列相似性	Belongs to the cysteine synthase/cystathionine beta-synthase family. Contains 1 CBS domain.
细胞定位	Cytoplasm. Nucleus.

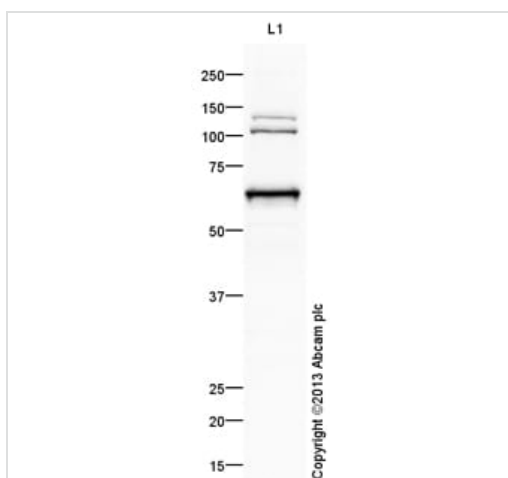
图片



Copyright (c) 2013 abcam plc

Immunocytochemistry/ Immunofluorescence - Anti-CBS antibody (ab126320)

ICC/IF image of ab126320 stained HeLa cells. The cells were 100% methanol fixed (5 min) and then incubated in 1%BSA / 10% normal goat serum / 0.3M glycine in 0.1% PBS-Tween for 1h to permeabilise the cells and block non-specific protein-protein interactions. The cells were then incubated with the antibody ab126320 at 5µg/ml overnight at +4°C. The secondary antibody (green) was DyLight® 488 goat anti- rabbit ([ab96899](#)) IgG (H+L) used at a 1/250 dilution for 1h. Alexa Fluor® 594 WGA was used to label plasma membranes (red) at a 1/200 dilution for 1h. DAPI was used to stain the cell nuclei (blue) at a concentration of 1.43µM.



Western blot - Anti-CBS antibody (ab126320)

Anti-CBS antibody (ab126320) at 1 µg/ml (Milk blocking - 3%) + Human liver tissue lysate - total protein ([ab29889](#)) at 25 µg

Secondary

Goat Anti-Rabbit IgG H&L (HRP) ([ab97051](#)) at 1/10000 dilution

Developed using the ECL technique.

Performed under reducing conditions.

Predicted band size: 60 kDa

Observed band size: 64 kDa

Additional bands at: 105 kDa, 140 kDa. We are unsure as to the identity of these extra bands.

Exposure time: 10 seconds

Abcam recommends using milk as the blocking agent - 3%. This blot was produced using a 10% Bis-tris gel under the MOPS buffer system. The gel was run at 200V for 50 minutes before being

transferred onto a Nitrocellulose membrane at 30V for 70 minutes. The membrane was then blocked for an hour using 3% Milk before being incubated with ab126320 overnight at 4°C. Antibody binding was detected using an anti-rabbit antibody conjugated to HRP, and visualised using ECL development solution.

Please note: All products are "FOR RESEARCH USE ONLY. NOT FOR USE IN DIAGNOSTIC PROCEDURES"

Our Abpromise to you: Quality guaranteed and expert technical support

- Replacement or refund for products not performing as stated on the datasheet
- Valid for 12 months from date of delivery
- Response to your inquiry within 24 hours

- We provide support in Chinese, English, French, German, Japanese and Spanish
- Extensive multi-media technical resources to help you
- We investigate all quality concerns to ensure our products perform to the highest standards

If the product does not perform as described on this datasheet, we will offer a refund or replacement. For full details of the Abpromise, please visit <https://www.abcam.cn/abpromise> or contact our technical team.

Terms and conditions

- Guarantee only valid for products bought direct from Abcam or one of our authorized distributors