


Anti-Cbl-c antibody ab34750

★★★★★ [1 Abreviews](#) [1 图像](#)

概述

产品名称	Anti-Cbl-c抗体
描述	兔多克隆抗体to Cbl-c
宿主	Rabbit
特异性	No reactivity is expected with Cbl-a or Cbl-b.
经测试应用	适用于: WB
种属反应性	与反应: Recombinant fragment 预测可用于: Mouse, Rat, Human, Chimpanzee 
免疫原	Synthetic peptide: PRKPRNAQPKVRLK , corresponding to amino acids 444-458 of Human Cbl-c Run BLAST with Run BLAST with
常规说明	<p>The Life Science industry has been in the grips of a reproducibility crisis for a number of years. Abcam is leading the way in addressing this with our range of recombinant monoclonal antibodies and knockout edited cell lines for gold-standard validation. Please check that this product meets your needs before purchasing.</p> <p>If you have any questions, special requirements or concerns, please send us an inquiry and/or contact our Support team ahead of purchase. Recommended alternatives for this product can be found below, along with publications, customer reviews and Q&As</p>

性能

形式	Liquid
存放说明	Shipped at 4°C. Upon delivery aliquot and store at -20°C or -80°C. Avoid repeated freeze / thaw cycles.
存储溶液	Preservative: 0.01% Sodium azide Constituents: 0.42% Potassium phosphate, 0.87% Sodium chloride
纯度	Immunogen affinity purified
纯化说明	The product was affinity purified from monospecific antiserum by immunoaffinity purification.
克隆	多克隆
同种型	IgG

应用

The Abpromise guarantee

Abpromise™承诺保证使用ab34750于以下的经测试应用

“应用说明”部分下显示的仅为推荐的起始稀释度;实际最佳的稀释度/浓度应由使用者检定。

应用	Ab评论	说明
WB	★★★★★ (1)	1/500 - 1/3000. Predicted molecular weight: 52 kDa.

靶标

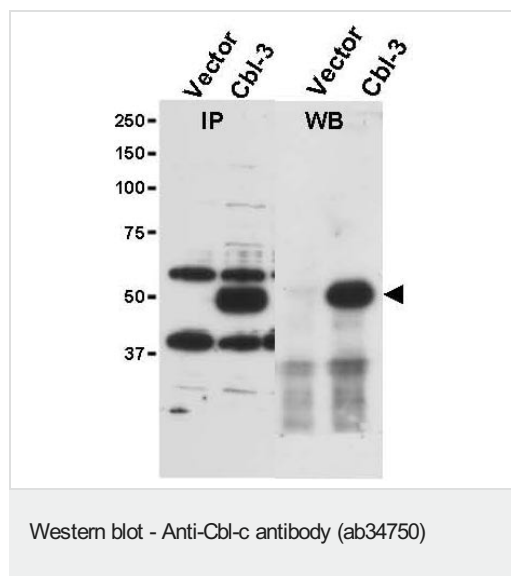
相关性

Cblc belongs to a family of ubiquitin protein ligases (E3s) that negatively regulate signaling by targeting activated tyrosine kinases for degradation. Cblc is the most recently cloned member of the Cbl proteins and is expressed only in epithelial cells (the other Cbl proteins are ubiquitous). Cblc, like the other mammalian Cbl proteins, can ubiquitinate the activated EGFR and target it for degradation. Cblc knock out mice show no obvious phenotype. Thus, the physiological role of Cblc is not known.

细胞定位

Nuclear

图片



All lanes : Anti-Cbl-c antibody (ab34750) at 1/500 dilution

Lanes 1 & 3 : Hek 293T cell lysate transfected with empty vector

Lanes 2 & 4 : Hek 293T cell lysate transfected with Cbl-c.

Predicted band size: 52 kDa

Observed band size: 52 kDa

The right panel shows western blotting after first immunoprecipitating with Rabbit anti- Cbl-c followed by immunoblotting.

Please note: All products are "FOR RESEARCH USE ONLY. NOT FOR USE IN DIAGNOSTIC PROCEDURES"

Our Abpromise to you: Quality guaranteed and expert technical support

- Replacement or refund for products not performing as stated on the datasheet
- Valid for 12 months from date of delivery
- Response to your inquiry within 24 hours

- We provide support in Chinese, English, French, German, Japanese and Spanish
- Extensive multi-media technical resources to help you
- We investigate all quality concerns to ensure our products perform to the highest standards

If the product does not perform as described on this datasheet, we will offer a refund or replacement. For full details of the Abpromise, please visit <https://www.abcam.cn/abpromise> or contact our technical team.

Terms and conditions

- Guarantee only valid for products bought direct from Abcam or one of our authorized distributors