


Anti-CBF1 interacting corepressor/CIR1 antibody ab113203

2 图像

概述

| | |
|-------|---|
| 产品名称 | Anti-CBF1 interacting corepressor/CIR1抗体 |
| 描述 | 兔多克隆抗体to CBF1 interacting corepressor/CIR1 |
| 宿主 | Rabbit |
| 经测试应用 | 适用于: WB, IP |
| 种属反应性 | 与反应: Human 预测可用于: Chimpanzee  |
| 免疫原 | Synthetic peptide corresponding to Human CBF1 interacting corepressor/CIR1 aa 400-500. Database link: Q86X95 |
| 阳性对照 | HeLa, Jurkat and 293T cell lysates. |
| 常规说明 | <p>The Life Science industry has been in the grips of a reproducibility crisis for a number of years. Abcam is leading the way in addressing this with our range of recombinant monoclonal antibodies and knockout edited cell lines for gold-standard validation. Please check that this product meets your needs before purchasing.</p> <p>If you have any questions, special requirements or concerns, please send us an inquiry and/or contact our Support team ahead of purchase. Recommended alternatives for this product can be found below, along with publications, customer reviews and Q&As</p> |

性能

| | |
|------|---|
| 形式 | Liquid |
| 存放说明 | Shipped at 4°C. Upon delivery aliquot and store at -20°C. Avoid freeze / thaw cycles. |
| 存储溶液 | pH: 7 Preservative: 0.09% Sodium azide Constituent: 99.91% Tris citrate/phosphate |
| 纯度 | pH 7 to 8 Immunogen affinity purified |
| 克隆 | 多克隆 |
| 同种型 | IgG |

应用

The Abpromise guarantee **Abpromise™**承诺保证使用ab113203于以下的经测试应用

“应用说明”部分 下显示的仅为推荐的起始稀释度;实际最佳的稀释度/浓度应由使用者检定。

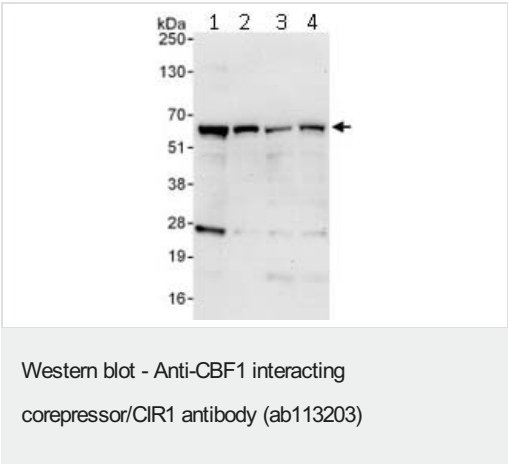
| 应用 | Ab评论 | 说明 |
|----|------|---|
| WB | | 1/2000 - 1/10000. Predicted molecular weight: 52 kDa. |
| IP | | Use at 2-10 µg/mg of lysate. |

靶标

相关性 CBF1 interacting corepressor may modulate splice site selection during alternative splicing of pre-mRNAs. It regulates transcription and acts as corepressor for RBPSUH; recruits RBPSUH to the Sin3-histone deacetylase complex (HDAC).

细胞定位 Nuclear

图片

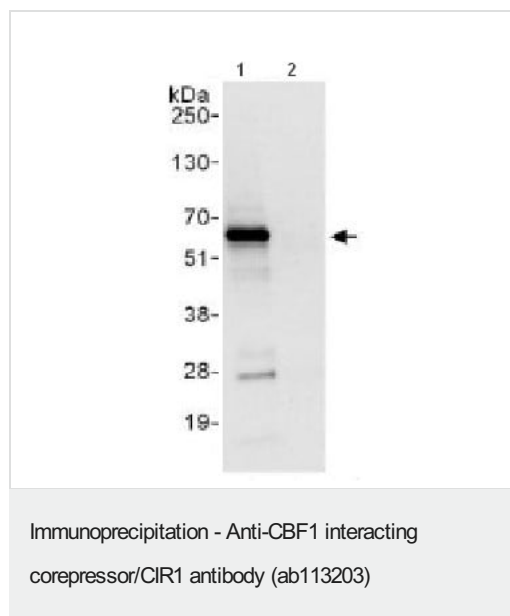


All lanes : Anti-CBF1 interacting corepressor/CIR1 antibody (ab113203) at 0.1 µg/ml

- Lane 1 :** HeLa cell Lysate at 50 µg
- Lane 2 :** HeLa cell Lysate at 15 µg
- Lane 3 :** Jurkat cell Lysate at 50 µg
- Lane 4 :** 293T cell Lysate at 50 µg

Predicted band size: 52 kDa

Exposure time: 30 seconds



Detection of CBF1 interacting corepressor/CIR1 by Western Blot of Immunoprecipitate.

ab113203 at 1 µg/ml staining CBF1 interacting corepressor/CIR1 in HeLa whole cell lysate immunoprecipitated using ab113203 at 6 µg/mg lysate (1 mg/IP; 20% of IP loaded/lane). Detection: Chemiluminescence with exposure time of 3 seconds.

Please note: All products are "FOR RESEARCH USE ONLY. NOT FOR USE IN DIAGNOSTIC PROCEDURES"

Our Abpromise to you: Quality guaranteed and expert technical support

- Replacement or refund for products not performing as stated on the datasheet
- Valid for 12 months from date of delivery
- Response to your inquiry within 24 hours
- We provide support in Chinese, English, French, German, Japanese and Spanish
- Extensive multi-media technical resources to help you
- We investigate all quality concerns to ensure our products perform to the highest standards

If the product does not perform as described on this datasheet, we will offer a refund or replacement. For full details of the Abpromise, please visit <https://www.abcam.cn/abpromise> or contact our technical team.

Terms and conditions

- Guarantee only valid for products bought direct from Abcam or one of our authorized distributors