


### Anti-Caveolin-2 antibody ab2911

★★★★☆ [4 Abreviews](#) [11 References](#) [2 图像](#)

#### 概述

产品名称	Anti-Caveolin-2抗体
描述	兔多克隆抗体to Caveolin-2
宿主	Rabbit
特异性	Detects caveolin-2 from rat tissues. This antibody does not detect caveolin-1 or -3.
经测试应用	适用于: WB
种属反应性	与反应: Mouse, Rat 预测可用于: Sheep, Rabbit, Cow, Cat, Human, Pig, Chimpanzee, Gorilla, African green monkey, African bush elephant 
免疫原	Synthetic peptide corresponding to Rat Caveolin-2 aa 1-100. Database link: <a href="#">Q2IBC5</a>

 [Run BLAST with](#)

 [Run BLAST with](#)

#### 常规说明

The Life Science industry has been in the grips of a reproducibility crisis for a number of years. Abcam is leading the way in addressing this with our range of recombinant monoclonal antibodies and knockout edited cell lines for gold-standard validation. Please check that this product meets your needs before purchasing.

If you have any questions, special requirements or concerns, please send us an inquiry and/or contact our Support team ahead of purchase. Recommended alternatives for this product can be found below, along with publications, customer reviews and Q&As

#### 性能

形式	Liquid
存放说明	Shipped at 4°C. Store at +4°C short term (1-2 weeks). Upon delivery aliquot. Store at -20°C or -80°C. Avoid freeze / thaw cycle.
存储溶液	Preservative: 0.05% Sodium azide Constituents: 0.1% BSA, 99% PBS
纯度	Immunogen affinity purified
克隆	多克隆
同种型	IgG

## 应用

**The Abpromise guarantee**      **Abpromise™**承诺保证使用ab2911于以下的经测试应用

“应用说明”部分 下显示的仅为推荐的起始稀释度;实际最佳的稀释度/浓度应由使用者检定。

应用	Ab评论	说明
WB	★★★★☆ (2)	Use at an assay dependent concentration. Can be blocked with Caveolin-2 peptide.

## 靶标

### 功能

May act as a scaffolding protein within caveolar membranes. Interacts directly with G-protein alpha subunits and can functionally regulate their activity. Acts as an accessory protein in conjunction with CAV1 in targeting to lipid rafts and driving caveolae formation. The Ser-36 phosphorylated form has a role in modulating mitosis in endothelial cells. Positive regulator of cellular mitogenesis of the MAPK signaling pathway. Required for the insulin-stimulated nuclear translocation and activation of MAPK1 and STAT3, and the subsequent regulation of cell cycle progression.

### 组织特异性

Expressed in endothelial cells, smooth muscle cells, skeletal myoblasts and fibroblasts.

### 序列相似性

Belongs to the caveolin family.

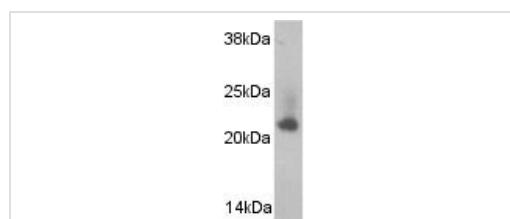
### 翻译后修饰

Phosphorylated on serine and tyrosine residues. CAV1 promotes phosphorylation on Ser-23 which then targets the complex to the plasma membrane, lipid rafts and caveolae. Phosphorylation on Ser-36 appears to modulate mitosis in endothelial cells (By similarity). Phosphorylation on both Tyr-19 and Tyr-27 is required for insulin-induced 'Ser-727' phosphorylation of STAT3 and its activation. Phosphorylation on Tyr-19 is required for insulin-induced phosphorylation of MAPK1 and DNA binding of STAT3. Tyrosine phosphorylation is induced by both EGF and insulin.

### 细胞定位

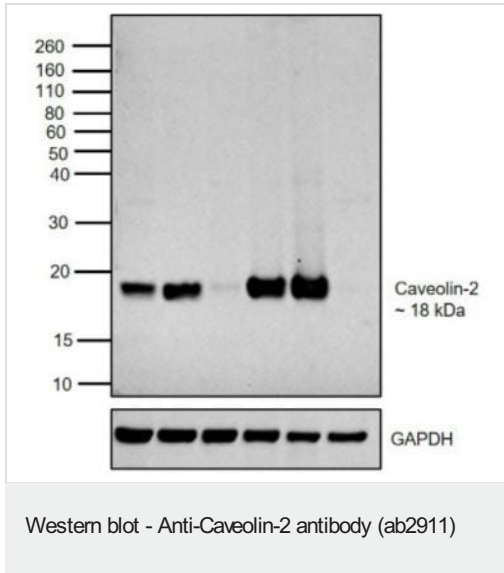
Nucleus. Cytoplasm. Golgi apparatus membrane. Cell membrane. Membrane > caveola. Potential hairpin-like structure in the membrane. Membrane protein of caveolae. Tyr-19-phosphorylated form is enriched at sites of cell-cell contact and is translocated to the nucleus in complex with MAPK1 in response to insulin (By similarity). Tyr-27-phosphorylated form is located both in the cytoplasm and plasma membrane. CAV1-mediated Ser-23-phosphorylated form locates to the plasma membrane. Ser-36-phosphorylated form resides in intracellular compartments.

## 图片



Western blot of caveolin-2 on rat skeletal muscle protein extract using ab2911.

Western blot - Anti-Caveolin-2 antibody (ab2911)



**All lanes** : Anti-Caveolin-2 antibody (ab2911) at 2 µg/ml

**Lane 1** : 3T3-L1 lysate

**Lane 2** : 3T3-L1 differentiated to adipocytes

**Lane 3** : Mouse Heart lysate

**Lane 4** : Mouse Lung lysate

**Lane 5** : Mouse Adipose lysate

**Lane 6** : Mouse Spleen lysate

#### Secondary

**All lanes** : Goat anti-Rabbit IgG (H+L) Superclonal Recombinant

Secondary Antibody, HRP at 1/4000 dilution

**Please note:** All products are "FOR RESEARCH USE ONLY. NOT FOR USE IN DIAGNOSTIC PROCEDURES"

#### Our Abpromise to you: Quality guaranteed and expert technical support

- Replacement or refund for products not performing as stated on the datasheet
- Valid for 12 months from date of delivery
- Response to your inquiry within 24 hours
- We provide support in Chinese, English, French, German, Japanese and Spanish
- Extensive multi-media technical resources to help you
- We investigate all quality concerns to ensure our products perform to the highest standards

If the product does not perform as described on this datasheet, we will offer a refund or replacement. For full details of the Abpromise, please visit <https://www.abcam.cn/abpromise> or contact our technical team.

#### Terms and conditions

- Guarantee only valid for products bought direct from Abcam or one of our authorized distributors