

Anti-Cathepsin B antibody [EPR4323] ab125067

重组 RabMAb

18 References 5 图像

概述	
产品名称	Anti-Cathepsin B抗体[EPR4323]
描述	兔单克隆抗体[EPR4323] to Cathepsin B
宿主	Rabbit
经测试应用	适用于: WB, IHC-P, ICC/IF 不适用于: Flow Cyt or IP
种属反应性	与反应: Human 不与反应: Mouse, Rat
免疫原	Synthetic peptide within Human Cathepsin B aa 1-200. The exact sequence is proprietary.
阳性对照	Human kidney and papillary carcinoma tissues; HeLa cells; HT1080, A375, SW480 and A549 cell line lysates.
常规说明	<p>This product is a recombinant monoclonal antibody, which offers several advantages including:</p> <ul style="list-style-type: none"><li>- High batch-to-batch consistency and reproducibility</li><li>- Improved sensitivity and specificity</li><li>- Long-term security of supply</li><li>- Animal-free production</li></ul> <p>For more information <a href="#">see here</a>.</p> <p>Our RabMAb<sup>®</sup> technology is a patented hybridoma-based technology for making rabbit monoclonal antibodies. For details on our patents, please refer to <a href="#">RabMAb<sup>®</sup> patents</a>.</p>
性能	
形式	Liquid
存放说明	Shipped at 4°C. Store at -20°C. Stable for 12 months at -20°C.
存储溶液	pH: 7.20 Preservative: 0.01% Sodium azide Constituents: 9% PBS, 40% Glycerol (glycerin, glycerine), 0.05% BSA, 50% Tissue culture supernatant
纯度	Protein A purified
克隆	单克隆
克隆编号	EPR4323

同种型IgG

应用

**The Abpromise guarantee**      **Abpromise™**承诺保证使用ab125067于以下的经测试应用  
“应用说明”部分 下显示的仅为推荐的起始稀释度;实际最佳的稀释度/浓度应由使用者检定。

应用	Ab评论	说明
WB		1/1000 - 1/10000. Predicted molecular weight: 38 kDa.
IHC-P		1/50 - 1/100. Perform heat mediated antigen retrieval with citrate buffer pH 6 before commencing with IHC staining protocol.
ICC/IF		1/50 - 1/100.

应用说明      Is unsuitable for Flow Cyt or IP.

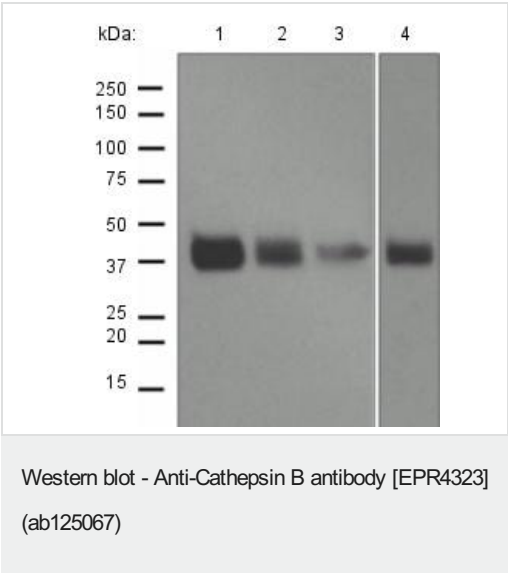
靶标

**功能**      Thiol protease which is believed to participate in intracellular degradation and turnover of proteins. Has also been implicated in tumor invasion and metastasis.

**序列相似性**      Belongs to the peptidase C1 family.

**细胞定位**      Lysosome. Melanosome. Identified by mass spectrometry in melanosome fractions from stage I to stage IV.

图片



**All lanes :** Anti-Cathepsin B antibody [EPR4323] (ab125067) at 1/1000 dilution

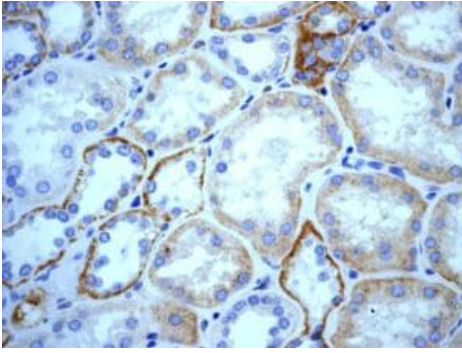
- Lane 1 :** HT1080 cell lysate
- Lane 2 :** A375 cell lysate
- Lane 3 :** SW480 cell lysate
- Lane 4 :** A549 cell lysate

Lysates/proteins at 10 µg per lane.

**Secondary**  
**All lanes :** Goat anti-Rabbit HRP at 1/2000 dilution

Developed using the ECL technique.

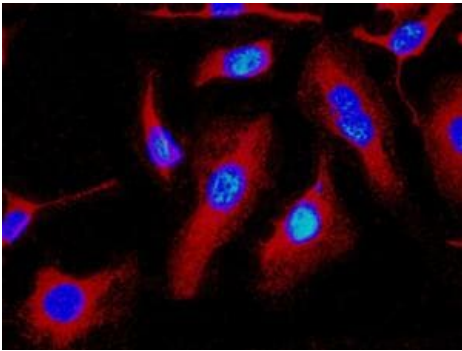
**Predicted band size:** 38 kDa



Immunohistochemistry (Formalin/PFA-fixed paraffin-embedded sections) - Anti-Cathepsin B antibody [EPR4323] (ab125067)

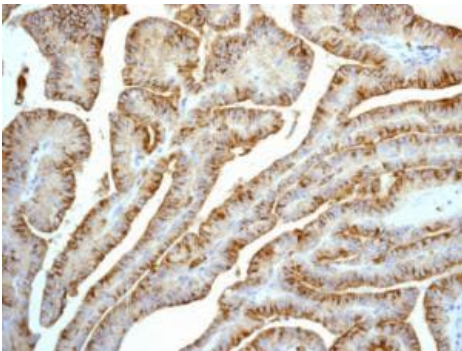
ab125067, at a 1/50 dilution, staining Cathepsin B in paraffin-embedded Human kidney tissue by immunohistochemistry.

Perform heat mediated antigen retrieval with citrate buffer pH 6 before commencing with IHC staining protocol.



Immunocytochemistry/ Immunofluorescence - Anti-Cathepsin B antibody [EPR4323] (ab125067)

ab125067, at a 1/50 dilution, staining Cathepsin B (red) in HeLa cells by immunofluorescence. DNA is marked in blue.



Immunohistochemistry (Formalin/PFA-fixed paraffin-embedded sections) - Anti-Cathepsin B antibody [EPR4323] (ab125067)

ab125067, at a 1/50 dilution, staining Cathepsin B in paraffin-embedded Human papillary carcinoma tissue by immunohistochemistry.

Perform heat mediated antigen retrieval with citrate buffer pH 6 before commencing with IHC staining protocol.

### Why choose a recombinant antibody?



**Research with confidence**  
Consistent and reproducible results



**Long-term and scalable supply**  
Recombinant technology



**Success from the first experiment**  
Confirmed specificity



**Ethical standards compliant**  
Animal-free production

Anti-Cathepsin B antibody [EPR4323] (ab125067)

**Please note:** All products are "FOR RESEARCH USE ONLY. NOT FOR USE IN DIAGNOSTIC PROCEDURES"

### Our Abpromise to you: Quality guaranteed and expert technical support

---

- Replacement or refund for products not performing as stated on the datasheet
- Valid for 12 months from date of delivery
- Response to your inquiry within 24 hours
- We provide support in Chinese, English, French, German, Japanese and Spanish
- Extensive multi-media technical resources to help you
- We investigate all quality concerns to ensure our products perform to the highest standards

If the product does not perform as described on this datasheet, we will offer a refund or replacement. For full details of the Abpromise, please visit <https://www.abcam.cn/abpromise> or contact our technical team.

### Terms and conditions

---

- Guarantee only valid for products bought direct from Abcam or one of our authorized distributors