

# Anti-Cathepsin B antibody [EPR21033] ab214428

**重组 RabMAb**

★★★★★ **5 Abreviews** **11 References** **7 图像**

### 概述

产品名称	Anti-Cathepsin B抗体[EPR21033]
描述	兔单克隆抗体[EPR21033] to Cathepsin B
宿主	Rabbit
经测试应用	<b>适用于:</b> Flow Cyt (Intra), IHC-P, WB, ICC/IF
种属反应性	<b>与反应:</b> Mouse, Rat
免疫原	Recombinant fragment. This information is proprietary to Abcam and/or its suppliers.
阳性对照	WB: Mouse kidney tissue lysate; Rat thymus and kidney tissue lysates; RAW 264.7 and PC-12 whole cell lysates. IHC-P: Mouse and rat kidney tissues. ICC/IF: RAW 264.7 and PC-12 cells. Flow Cyt (intra): RAW 264.7 cells.
常规说明	<p>This product is a recombinant monoclonal antibody, which offers several advantages including:</p> <ul style="list-style-type: none"> <li>- High batch-to-batch consistency and reproducibility</li> <li>- Improved sensitivity and specificity</li> <li>- Long-term security of supply</li> <li>- Animal-free production</li> </ul> <p>For more information <a href="#">see here</a>.</p> <p>Our RabMAb<sup>®</sup> technology is a patented hybridoma-based technology for making rabbit monoclonal antibodies. For details on our patents, please refer to <a href="#">RabMAb<sup>®</sup> patents</a>.</p>

### 性能

形式	Liquid
存放说明	Shipped at 4°C. Store at +4°C short term (1-2 weeks). Upon delivery aliquot. Store at -20°C long term. Avoid freeze / thaw cycle.
存储溶液	<p>pH: 7.2</p> <p>Preservative: 0.01% Sodium azide</p> <p>Constituents: PBS, 40% Glycerol (glycerin, glycerine), 0.05% BSA</p>
纯度	Protein A purified
克隆	单克隆
克隆编号	EPR21033

## 应用

## The Abpromise guarantee

Abpromise™承诺保证使用ab214428于以下的经测试应用

“应用说明”部分下显示的仅为推荐的起始稀释度；实际最佳的稀释度/浓度应由使用者检定。

应用	Ab评论	说明
Flow Cyt (Intra)		1/500.
IHC-P	★★★★★ (2)	1/1000. Perform heat mediated antigen retrieval with Tris/EDTA buffer pH 9.0 before commencing with IHC staining protocol.
WB	★★★★☆ (2)	1/1000. Predicted molecular weight: 37 kDa.
ICC/IF	★★★★★ (1)	1/250.

## 靶标

## 功能

Thiol protease which is believed to participate in intracellular degradation and turnover of proteins. Has also been implicated in tumor invasion and metastasis.

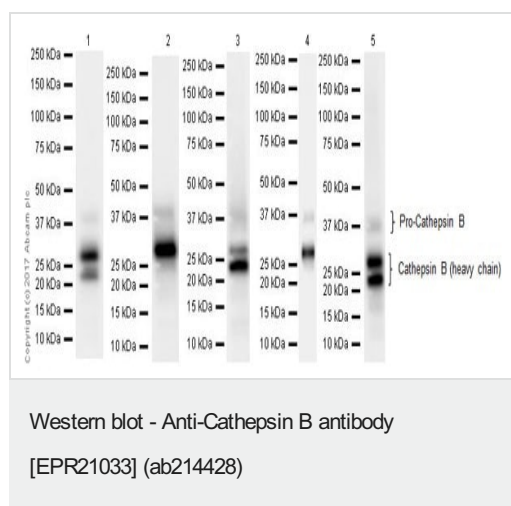
## 序列相似性

Belongs to the peptidase C1 family.

## 细胞定位

Lysosome. Melanosome. Identified by mass spectrometry in melanosome fractions from stage I to stage IV.

## 图片



**All lanes** : Anti-Cathepsin B antibody [EPR21033] (ab214428) at 1/1000 dilution

**Lane 1** : Mouse kidney tissue lysate

**Lane 2** : RAW 264.7 (mouse macrophage cell line transformed with Abelson murine leukemia virus) whole cell lysate

**Lane 3** : Rat thymus tissue lysate

**Lane 4** : Rat kidney tissue lysate

**Lane 5** : PC-12 (rat adrenal gland pheochromocytoma cell line) whole cell lysate

Lysates/proteins at 10 µg per lane.

## Secondary

**All lanes** : Goat Anti-Rabbit IgG H&L (HRP) (**ab97051**) at 1/100000 dilution

Developed using the ECL technique.

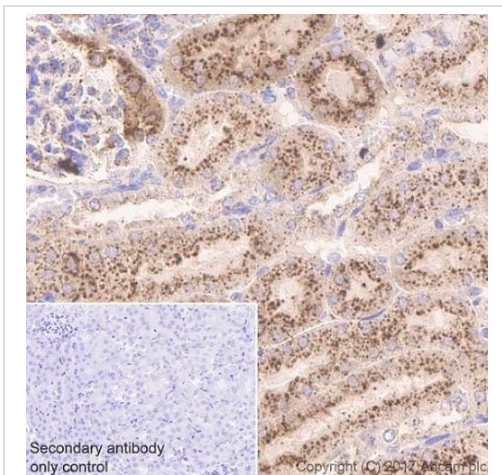
**Predicted band size:** 37 kDa

**Observed band size:** 25,31,43 kDa

**Exposure times:** Lanes 1,2: 23 seconds; Lane 3: 50 seconds;  
Lane 4: 15 seconds; Lane 5: 2 minutes.

Blocking/Dilution buffer: 5% NFDM/TBST.

The expression profile and molecular mass is consistent with what has been described in the literature (PMID:20536394; PMID: 10447678).

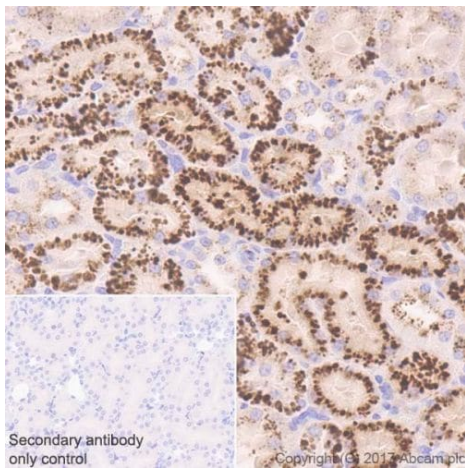


Immunohistochemical analysis of paraffin-embedded mouse kidney tissue labeling Cathepsin B with ab214428 at 1/1000 dilution, followed by secondary Goat Anti-Rabbit IgG H&L (HRP) Ready to use. Punctate cytoplasmic staining on mouse kidney (PMID: 20668705; PMID: 26831567) is observed. Counter stained with hematoxylin.

Secondary antibody only control: Used PBS instead of primary antibody, secondary antibody is Goat Anti-Rabbit IgG H&L (HRP) Ready to use.

Perform heat mediated antigen retrieval with Tris/EDTA buffer pH 9.0 before commencing with IHC staining protocol.

Immunohistochemistry (Formalin/PFA-fixed paraffin-embedded sections) - Anti-Cathepsin B antibody [EPR21033] (ab214428)

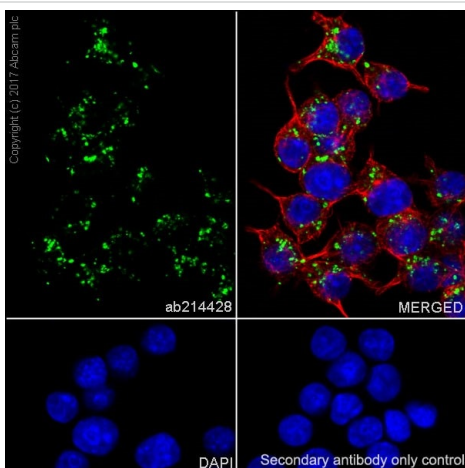


Immunohistochemistry (Formalin/PFA-fixed paraffin-embedded sections) - Anti-Cathepsin B antibody [EPR21033] (ab214428)

Immunohistochemical analysis of paraffin-embedded rat kidney tissue labeling Cathepsin B with ab214428 at 1/1000 dilution, followed by secondary Goat Anti-Rabbit IgG H&L (HRP) Ready to use. Punctate cytoplasmic staining on rat kidney (PMID: 20668705; PMID: 26831567) is observed. Counter stained with hematoxylin.

Secondary antibody only control: Used PBS instead of primary antibody, secondary antibody is Goat Anti-Rabbit IgG H&L (HRP) Ready to use.

Perform heat mediated antigen retrieval with Tris/EDTA buffer pH 9.0 before commencing with IHC staining protocol.

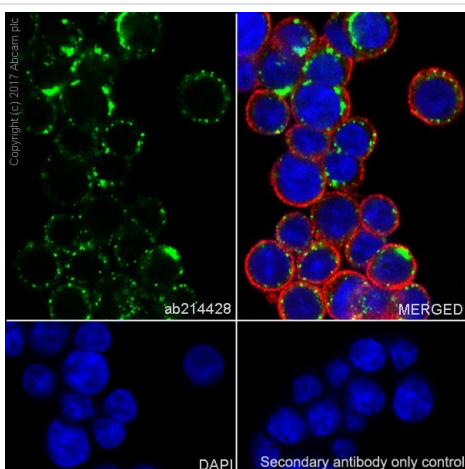


Immunocytochemistry/ Immunofluorescence - Anti-Cathepsin B antibody [EPR21033] (ab214428)

Immunofluorescent analysis of 100% methanol-fixed RAW 264.7 (mouse macrophage cell line transformed with Abelson murine leukemia virus) cells labeling Cathepsin B with ab214428 at 1/250 dilution, followed by Goat Anti-Rabbit IgG H&L (Alexa Fluor<sup>®</sup> 488) (**ab150077**) secondary antibody at 1/1000 dilution (green). Confocal image showing cytoplasmic staining in RAW 264.7 cells.

The nuclear counterstain is DAPI (blue). Tubulin is detected with Anti-alpha Tubulin antibody [DM1A] - Microtubule Marker (Alexa Fluor<sup>®</sup> 594) (**ab195889**) at 1/200 dilution (red).

Secondary antibody only control: Used PBS instead of primary antibody, followed by Goat Anti-Rabbit IgG H&L (Alexa Fluor<sup>®</sup> 488) (**ab150077**) secondary antibody at 1/1000 dilution.

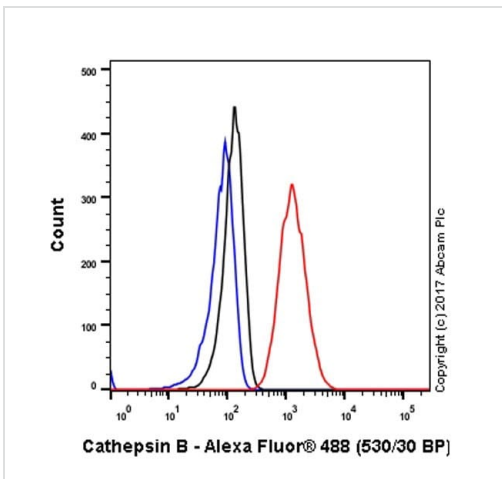


Immunocytochemistry/ Immunofluorescence - Anti-Cathepsin B antibody [EPR21033] (ab214428)

Immunofluorescent analysis of 100% methanol-fixed PC-12 (rat adrenal gland pheochromocytoma cell line) cells labeling Cathepsin B with ab214428 at 1/250 dilution, followed by Goat Anti-Rabbit IgG H&L (Alexa Fluor<sup>®</sup> 488) (**ab150077**) secondary antibody at 1/1000 dilution (green). Confocal image showing cytoplasmic staining on PC-12 cells.

The nuclear counterstain is DAPI (blue). Tubulin is detected with Anti-alpha Tubulin antibody [DM1A] - Microtubule Marker (Alexa Fluor<sup>®</sup> 594) (**ab195889**) at 1/200 dilution (red).

Secondary antibody only control: Used PBS instead of primary antibody, followed by Goat Anti-Rabbit IgG H&L (Alexa Fluor<sup>®</sup> 488) (**ab150077**) secondary antibody at 1/1000 dilution.



Intracellular flow cytometric analysis of 4% paraformaldehyde-fixed, 90% methanol-permeabilized RAW 264.7 (mouse macrophage cell line transformed with Abelson murine leukemia virus) cell line labeling Cathepsin B with ab214428 at 1/500 dilution (red) compared with a Rabbit IgG, monoclonal [EPR25A] - Isotype Control (**ab172730**) (black) and an unlabeled control (cells without incubation with primary antibody and secondary antibody) (blue). Goat Anti-Rabbit IgG H&L (Alexa Fluor® 488) (**ab150077**), at 1/2000 dilution was used as the secondary antibody.

Flow Cytometry (Intracellular) - Anti-Cathepsin B antibody [EPR21033] (ab214428)

Why choose a recombinant antibody?

 <p><b>Research with confidence</b> Consistent and reproducible results</p>	 <p><b>Long-term and scalable supply</b> Recombinant technology</p>
 <p><b>Success from the first experiment</b> Confirmed specificity</p>	 <p><b>Ethical standards compliant</b> Animal-free production</p>

Anti-Cathepsin B antibody [EPR21033] (ab214428)

**Please note:** All products are "FOR RESEARCH USE ONLY. NOT FOR USE IN DIAGNOSTIC PROCEDURES"

### Our Abpromise to you: Quality guaranteed and expert technical support

- Replacement or refund for products not performing as stated on the datasheet
- Valid for 12 months from date of delivery
- Response to your inquiry within 24 hours
- We provide support in Chinese, English, French, German, Japanese and Spanish
- Extensive multi-media technical resources to help you
- We investigate all quality concerns to ensure our products perform to the highest standards

If the product does not perform as described on this datasheet, we will offer a refund or replacement. For full details of the Abpromise, please visit <https://www.abcam.cn/abpromise> or contact our technical team.

## Terms and conditions

---

- Guarantee only valid for products bought direct from Abcam or one of our authorized distributors