

### Anti-Catalase antibody [EPR1928Y] ab76110

敲除验证
重组
RabMAb

[18 References](#)
[4 图像](#)

#### 概述

产品名称	Anti-Catalase抗体[EPR1928Y]
描述	兔单克隆抗体[EPR1928Y] to Catalase
宿主	Rabbit
经测试应用	<b>适用于:</b> WB, IHC-P <b>不适用于:</b> Flow Cyt, ICC/IF or IP
种属反应性	<b>与反应:</b> Mouse, Rat, Human
免疫原	Synthetic peptide within Human Catalase (N terminal). The exact sequence is proprietary.
阳性对照	TF1, HeLa, Jurkat and HepG2 whole cell lysate ( <a href="#">ab7900</a> ); human liver tissue.
常规说明	<p>This product is a recombinant monoclonal antibody, which offers several advantages including:</p> <ul style="list-style-type: none"> <li>- High batch-to-batch consistency and reproducibility</li> <li>- Improved sensitivity and specificity</li> <li>- Long-term security of supply</li> <li>- Animal-free production</li> </ul> <p>For more information <a href="#">see here</a>.</p> <p>Our RabMAb<sup>®</sup> technology is a patented hybridoma-based technology for making rabbit monoclonal antibodies. For details on our patents, please refer to <a href="#">RabMAb<sup>®</sup> patents</a>.</p>

#### 性能

形式	Liquid
存放说明	Shipped at 4°C. Upon delivery aliquot and store at -20°C. Avoid repeated freeze / thaw cycles.
存储溶液	pH: 7.20 Preservative: 0.01% Sodium azide Constituents: 9% PBS, 40% Glycerol (glycerin, glycerine), 0.05% BSA, 50% Tissue culture supernatant
纯度	Protein A purified
克隆	单克隆
克隆编号	EPR1928Y
同种型	IgG

**Abpromise™ 承诺保证使用ab76110于以下的经测试应用**

Is unsuitable for Flow Cyt, ICC/IF or IP.

Occurs in almost all aerobically respiring organisms and serves to protect cells from the toxic effects of hydrogen peroxide. Promotes growth of cells including T-cells, B-cells, myeloid leukemia cells, melanoma cells, mastocytoma cells and normal and transformed fibroblast cells.

Defects in CAT are the cause of acatalasia (ACATLAS) [MIM:115500]; also known as acatalasemia. This disease is characterized by absence of catalase activity in red cells and is often associated with ulcerating oral lesions.

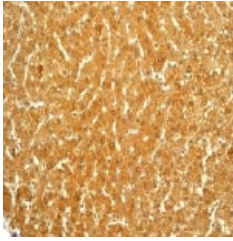
Belongs to the catalase family.

The N-terminus is blocked.

Peroxisome.

ab76110 was shown to specifically react with Catalase when Catalase knockout samples were used. Wild-type and Catalase knockout samples were subjected to SDS-PAGE. ab76110 and **ab8245** (loading control to GAPDH) were diluted at 1/500 and 1/10000 respectively and incubated overnight at 4°C. Blots were developed with Goat anti-Rabbit IgG H&L (IRDye® 800CW) preadsorbed (**ab216773**) and Goat anti-Mouse IgG H&L (IRDye® 680RD) preadsorbed (**ab216776**) secondary antibodies at

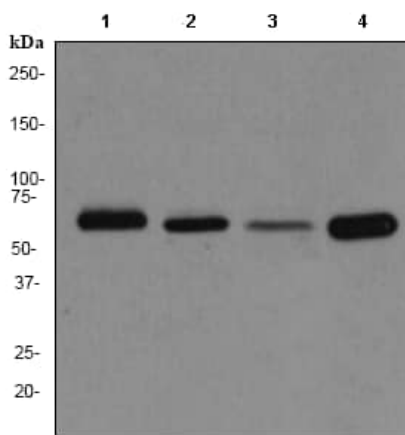
1/10000 dilution for 1 hour at room temperature before imaging.



Immunohistochemistry (Formalin/PFA-fixed paraffin-embedded sections) - Anti-Catalase antibody [EPR1928Y] (ab76110)

ab76110 at 1/100-1/250 dilution staining Catalase in human liver by Immunohistochemistry, Paraffin-embedded tissue.

Perform heat mediated antigen retrieval before commencing with IHC staining protocol.



Western blot - Anti-Catalase antibody [EPR1928Y] (ab76110)

**All lanes :** Anti-Catalase antibody [EPR1928Y] (ab76110) at 1/1000 dilution

**Lane 1 :** TF cell lysate

**Lane 2 :** HeLa cell lysate

**Lane 3 :** Jurkat cell lysate

**Lane 4 :** HepG2 cell lysate

Lysates/proteins at 10 µg per lane.

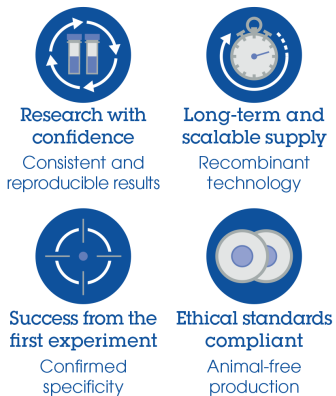
### Secondary

**All lanes :** goat anti-rabbit HRP at 1/2000 dilution

**Predicted band size:** 60 kDa

**Observed band size:** 60 kDa

Why choose a recombinant antibody?



Anti-Catalase antibody [EPR1928Y] (ab76110)

**Please note:** All products are "FOR RESEARCH USE ONLY. NOT FOR USE IN DIAGNOSTIC PROCEDURES"

### **Our Abpromise to you: Quality guaranteed and expert technical support**

---

- Replacement or refund for products not performing as stated on the datasheet
- Valid for 12 months from date of delivery
- Response to your inquiry within 24 hours
  
- We provide support in Chinese, English, French, German, Japanese and Spanish
- Extensive multi-media technical resources to help you
- We investigate all quality concerns to ensure our products perform to the highest standards

If the product does not perform as described on this datasheet, we will offer a refund or replacement. For full details of the Abpromise, please visit <https://www.abcam.cn/abpromise> or contact our technical team.

### **Terms and conditions**

---

- Guarantee only valid for products bought direct from Abcam or one of our authorized distributors