

# Anti-Caspase-9 antibody ab2013

★★★★★ [2 Abreviews](#) [36 References](#) [5 图像](#)

### 概述

产品名称	Anti-Caspase-9抗体
描述	兔多克隆抗体to Caspase-9
宿主	Rabbit
特异性	No cross reactivity with other members of the caspase family. This antibody does not recognise the cleaved form of Caspase-9.
经测试应用	<b>适用于:</b> WB
种属反应性	<b>与反应:</b> Mouse, Rat, Human
免疫原	Synthetic peptide corresponding to Human Caspase-9 aa 41-56. Sequence: EDIQRAGSGSRRDQAR

Database link: [P55211](#)

(Peptide available as [ab7885](#))

 [Run BLAST with](#)

 [Run BLAST with](#)

### 常规说明

The Life Science industry has been in the grips of a reproducibility crisis for a number of years. Abcam is leading the way in addressing this with our range of recombinant monoclonal antibodies and knockout edited cell lines for gold-standard validation. Please check that this product meets your needs before purchasing.

If you have any questions, special requirements or concerns, please send us an inquiry and/or contact our Support team ahead of purchase. Recommended alternatives for this product can be found below, along with publications, customer reviews and Q&As

### 性能

形式	Liquid
存放说明	Shipped at 4°C. Store at +4°C short term (1-2 weeks). Upon delivery aliquot. Store at -20°C or -80°C. Avoid freeze / thaw cycle.
存储溶液	pH: 7.2 Preservative: 0.02% Sodium azide
纯度	Immunogen affinity purified
纯化说明	Caspase-9 Antibody is affinity chromatography purified via peptide column.

克隆 多克隆  
同种型 IgG

## 应用

**The Abpromise guarantee** **Abpromise™**承诺保证使用ab2013于以下的经测试应用

“应用说明”部分 下显示的仅为推荐的起始稀释度;实际最佳的稀释度/浓度应由使用者检定。

应用	Ab评论	说明
WB	★★★★☆ (2)	1/1000 - 1/2000. Predicted molecular weight: 46 kDa.

## 靶标

**功能** Involved in the activation cascade of caspases responsible for apoptosis execution. Binding of caspase-9 to Apaf-1 leads to activation of the protease which then cleaves and activates caspase-3. Proteolytically cleaves poly(ADP-ribose) polymerase (PARP). Isoform 2 lacks activity is an dominant-negative inhibitor of caspase-9.

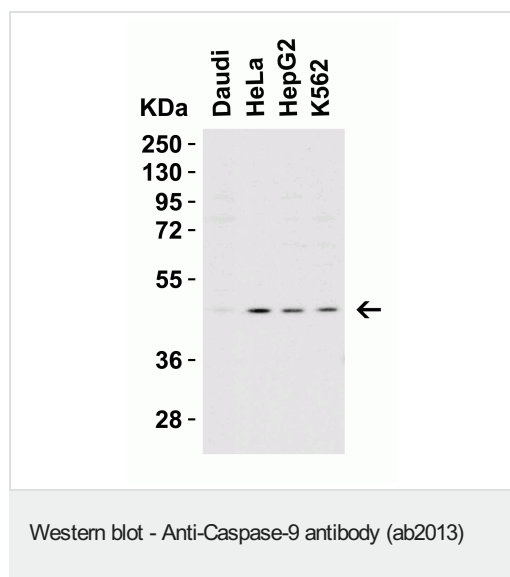
**组织特异性** Ubiquitous, with highest expression in the heart, moderate expression in liver, skeletal muscle, and pancreas. Low levels in all other tissues. Within the heart, specifically expressed in myocytes.

**序列相似性** Belongs to the peptidase C14A family.  
Contains 1 CARD domain.

**发展阶段** Expressed at low levels in fetal heart, at moderate levels in neonate heart, and at high levels in adult heart.

**翻译后修饰** Cleavages at Asp-315 by granzyme B and at Asp-330 by caspase-3 generate the two active subunits. Caspase-8 and -10 can also be involved in these processing events.

## 图片



**All lanes** : Anti-Caspase-9 antibody (ab2013) at 1 µg/ml

**Lane 1** : Daudi cell lysate

**Lane 2** : HeLa cell lysate

**Lane 3** : HepG2 cell lysate

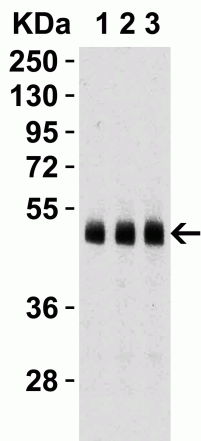
**Lane 4** : K562 cell lysate

Lysates/proteins at 15 µg per lane.

**Secondary**

**All lanes** : Goat anti-rabbit IgG HRP conjugate at 1/10000 dilution

**Predicted band size:** 46 kDa



Western blot - Anti-Caspase-9 antibody (ab2013)

**Lane 1** : Anti-Caspase-9 antibody (ab2013) at 1 µg/ml

**Lane 2** : Anti-Caspase-9 antibody (ab2013) at 2 µg/ml

**Lane 3** : Anti-Caspase-9 antibody (ab2013) at 4 µg/ml

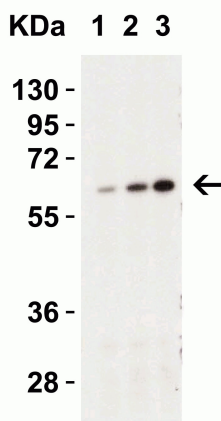
**All lanes** : Human heart lysate

Lysates/proteins at 15 µg per lane.

**Secondary**

**All lanes** : Goat anti-rabbit IgG HRP conjugate at 1/10000 dilution

**Predicted band size:** 46 kDa



Western blot - Anti-Caspase-9 antibody (ab2013)

**Lane 1** : Anti-Caspase-9 antibody (ab2013) at 0.5 µg/ml

**Lane 2** : Anti-Caspase-9 antibody (ab2013) at 1 µg/ml

**Lane 3** : Anti-Caspase-9 antibody (ab2013) at 2 µg/ml

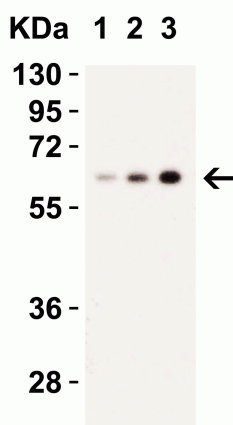
**All lanes** : Mouse spleen lysate

Lysates/proteins at 15 µg per lane.

**Secondary**

**All lanes** : Goat anti-rabbit IgG HRP conjugate at 1/10000 dilution

**Predicted band size:** 46 kDa



Western blot - Anti-Caspase-9 antibody (ab2013)

**All lanes** : Anti-Caspase-9 antibody (ab2013) at 0.5 µg

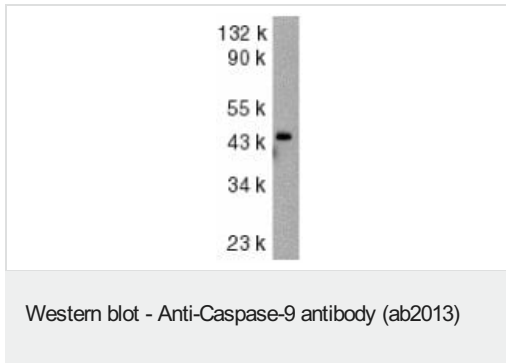
**All lanes** : Rat spleen lysate

Lysates/proteins at 15 µg per lane.

**Secondary**

**All lanes** : Goat anti-rabbit IgG HRP conjugate at 1/10000 dilution

**Predicted band size:** 46 kDa



Anti-Caspase-9 antibody (ab2013) at 1/1000 dilution + HeLa whole cell lysate

**Predicted band size:** 46 kDa

**Observed band size:** 46 kDa

**Please note:** All products are "FOR RESEARCH USE ONLY. NOT FOR USE IN DIAGNOSTIC PROCEDURES"

### **Our Abpromise to you: Quality guaranteed and expert technical support**

---

- Replacement or refund for products not performing as stated on the datasheet
- Valid for 12 months from date of delivery
- Response to your inquiry within 24 hours
- We provide support in Chinese, English, French, German, Japanese and Spanish
- Extensive multi-media technical resources to help you
- We investigate all quality concerns to ensure our products perform to the highest standards

If the product does not perform as described on this datasheet, we will offer a refund or replacement. For full details of the Abpromise, please visit <https://www.abcam.cn/abpromise> or contact our technical team.

### **Terms and conditions**

---

- Guarantee only valid for products bought direct from Abcam or one of our authorized distributors