

Anti-Caspase-7 antibody ab25900

★★★★★ [1 Abreviews](#) [8 References](#) [2 图像](#)

概述

产品名称	Anti-Caspase-7抗体
描述	兔多克隆抗体to Caspase-7
宿主	Rabbit
经测试应用	适用于: IHC-P, WB
种属反应性	与反应: Human
免疫原	Synthetic peptide corresponding to Human Caspase-7 aa 1-16 (C terminal). Database link: P55210
阳性对照	Jurkat cell lysate, human skeletal muscle cell
常规说明	<p>The Life Science industry has been in the grips of a reproducibility crisis for a number of years. Abcam is leading the way in addressing this with our range of recombinant monoclonal antibodies and knockout edited cell lines for gold-standard validation. Please check that this product meets your needs before purchasing.</p> <p>If you have any questions, special requirements or concerns, please send us an inquiry and/or contact our Support team ahead of purchase. Recommended alternatives for this product can be found below, along with publications, customer reviews and Q&As</p>

性能

形式	Liquid
存放说明	Shipped at 4°C. Store at +4°C short term (1-2 weeks). Upon delivery aliquot. Store at -20°C. Avoid freeze / thaw cycle.
存储溶液	pH: 7.2 Preservative: 0.02% Sodium azide Constituent: PBS
纯度	Immunogen affinity purified
克隆	多克隆
同种型	IgG

应用

The Abpromise guarantee

Abpromise™ 承诺保证使用 ab25900 于以下的经测试应用

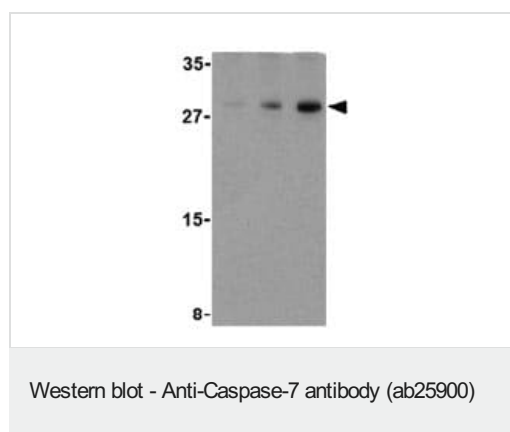
“应用说明”部分下显示的仅为推荐的起始稀释度；实际最佳的稀释度/浓度应由使用者检定。

应用	Ab评论	说明
IHC-P		Use a concentration of 2 µg/ml.
WB	★★★★★ (1)	Use a concentration of 0.5 µg/ml. Detects a band of approximately 30 kDa (predicted molecular weight: 34 kDa).

靶标

功能	Involved in the activation cascade of caspases responsible for apoptosis execution. Cleaves and activates sterol regulatory element binding proteins (SREBPs). Proteolytically cleaves poly(ADP-ribose) polymerase (PARP) at a '216-Asp-Gly-217' bond. Overexpression promotes programmed cell death.
组织特异性	Highly expressed in lung, skeletal muscle, liver, kidney, spleen and heart, and moderately in testis. No expression in the brain.
序列相似性	Belongs to the peptidase C14A family.
翻译后修饰	Cleavages by granzyme B or caspase-10 generate the two active subunits. Propeptide domains can also be cleaved efficiently by caspase-3. Active heterodimers between the small subunit of caspase-7 and the large subunit of caspase-3, and vice versa, also occur.
细胞定位	Cytoplasm.

图片



Lane 1 : Anti-Caspase-7 antibody (ab25900) at 0.5 µg/ml

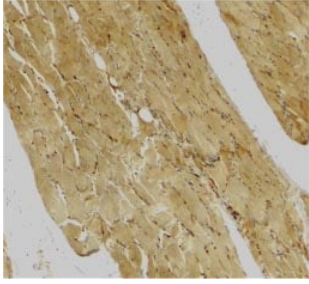
Lane 2 : Anti-Caspase-7 antibody (ab25900) at 1 µg/ml

Lane 3 : Anti-Caspase-7 antibody (ab25900) at 2 µg/ml

All lanes : Human skeletal muscle cell lysate

Predicted band size: 34 kDa

Observed band size: 30 kDa



Immunohistochemical staining of human skeletal muscle (paraffin embedded sections) using ab25900 anti Caspase-7 at 2 µg/ml.

Immunohistochemistry (Formalin/PFA-fixed paraffin-embedded sections) - Anti-Caspase-7 antibody (ab25900)

Please note: All products are "FOR RESEARCH USE ONLY. NOT FOR USE IN DIAGNOSTIC PROCEDURES"

Our Abpromise to you: Quality guaranteed and expert technical support

- Replacement or refund for products not performing as stated on the datasheet
- Valid for 12 months from date of delivery
- Response to your inquiry within 24 hours
- We provide support in Chinese, English, French, German, Japanese and Spanish
- Extensive multi-media technical resources to help you
- We investigate all quality concerns to ensure our products perform to the highest standards

If the product does not perform as described on this datasheet, we will offer a refund or replacement. For full details of the Abpromise, please visit <https://www.abcam.cn/abpromise> or contact our technical team.

Terms and conditions

- Guarantee only valid for products bought direct from Abcam or one of our authorized distributors