

Anti-Caspase-1 antibody ab138483

★★★★★ [2 Abreviews](#) [44 References](#) [2 图像](#)

概述

产品名称	Anti-Caspase-1抗体
描述	兔多克隆抗体to Caspase-1
宿主	Rabbit
特异性	Replenishment batches of ab138483 are tested in WB. Previous batches were additionally validated in IHC-P. This application is still expected to work and is covered by our Abpromise guarantee.
经测试应用	适用于: WB, IHC-P
种属反应性	与反应: Mouse
免疫原	Synthetic peptide corresponding to Mouse Caspase-1 aa 100-200 conjugated to keyhole limpet haemocyanin. Database link: P29452
阳性对照	This antibody gave a positive signal in Mouse Spleen tissue lysate IHC-P: FFPE mouse lung tissue sections.
常规说明	<p>The Life Science industry has been in the grips of a reproducibility crisis for a number of years. Abcam is leading the way in addressing this with our range of recombinant monoclonal antibodies and knockout edited cell lines for gold-standard validation. Please check that this product meets your needs before purchasing.</p> <p>If you have any questions, special requirements or concerns, please send us an inquiry and/or contact our Support team ahead of purchase. Recommended alternatives for this product can be found below, along with publications, customer reviews and Q&As</p>

性能

形式	Liquid
存放说明	Shipped at 4°C. Store at +4°C short term (1-2 weeks). Upon delivery aliquot. Store at -20°C. Avoid freeze / thaw cycle.
存储溶液	pH: 7.40 Preservative: 0.02% Sodium azide Constituent: PBS

Batches of this product that have a concentration < 1mg/ml may have BSA added as a stabilising agent. If you would like information about the formulation of a specific lot, please contact our

scientific support team who will be happy to help.

纯度 Protein A purified
克隆 多克隆
同种型 IgG

应用

The Abpromise guarantee **Abpromise™**承诺保证使用ab138483于以下的经测试应用

“应用说明”部分 下显示的仅为推荐的起始稀释度;实际最佳的稀释度/浓度应由使用者检定。

应用	Ab评论	说明
WB	★★★★★ (1)	Use a concentration of 1 µg/ml. Detects a band of approximately 51 kDa (predicted molecular weight: 45 kDa).
IHC-P	★★★★★ (1)	Use a concentration of 1 µg/ml. Perform heat mediated antigen retrieval with citrate buffer pH 6 before commencing with IHC staining protocol.

靶标

功能 Thiol protease that cleaves IL-1 beta between an Asp and an Ala, releasing the mature cytokine which is involved in a variety of inflammatory processes. Important for defense against pathogens. Cleaves and activates sterol regulatory element binding proteins (SREBPs). Can also promote apoptosis.

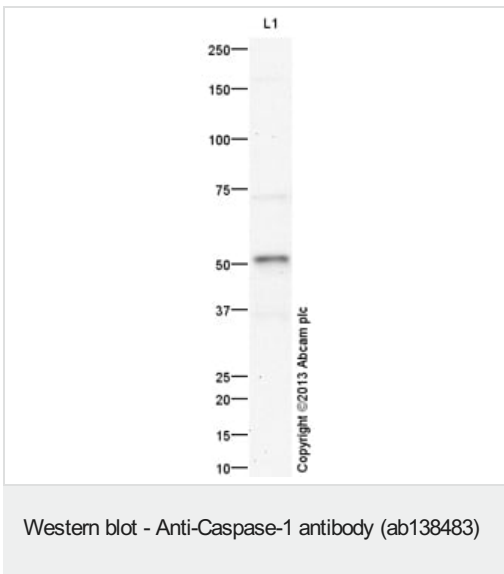
组织特异性 Expressed in larger amounts in spleen and lung. Detected in liver, heart, small intestine, colon, thymus, prostate, skeletal muscle, peripheral blood leukocytes, kidney and testis. No expression in the brain.

序列相似性 Belongs to the peptidase C14A family.
Contains 1 CARD domain.

翻译后修饰 The two subunits are derived from the precursor sequence by an autocatalytic mechanism.

细胞定位 Cytoplasm.

图片



Anti-Caspase-1 antibody (ab138483) at 1 µg/ml (Milk blocking 3%)
+ Spleen (Mouse) Tissue Lysate at 25 µg

Secondary

Goat Anti-Rabbit IgG H&L (HRP) ([ab97051](#)) at 1/10000 dilution

Developed using the ECL technique.

Performed under reducing conditions.

Predicted band size: 45 kDa

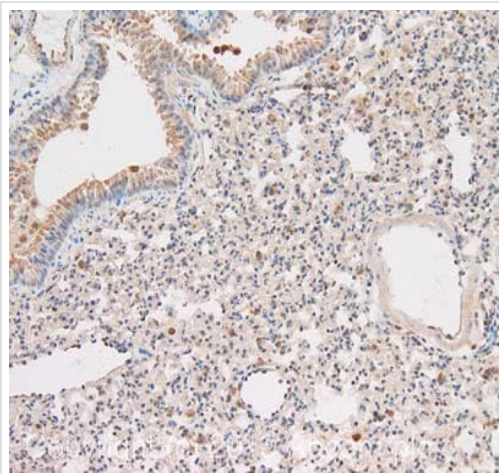
Observed band size: 51 kDa

Additional bands at: 74 kDa (possible non-specific binding)

Exposure time: 20 minutes

The predicted molecular weight of Caspase 1 is 45 kDa (SwissProt), however we expect to observe a banding pattern around 50 kDa.

This blot was produced using a 10% Bis-tris gel under the MOPS buffer system. The gel was run at 200V for 50 minutes before being transferred onto a Nitrocellulose membrane at 30V for 70 minutes. The membrane was then blocked for an hour using 5% Bovine Serum Albumin before being incubated with ab138483 overnight at 4°C. Antibody binding was detected using an anti-rabbit antibody conjugated to HRP, and visualised using ECL development solution.



Immunohistochemistry (Formalin/PFA-fixed paraffin-embedded sections) - Anti-Caspase-1 antibody (ab138483)

IHC image of Caspase-1 staining in mouse lung formalin fixed paraffin embedded tissue section, performed on a Leica Bond system using the standard protocol B. The section was pre-treated using heat mediated antigen retrieval with sodium citrate buffer (pH6, epitope retrieval solution 1) for 20 mins. The section was then incubated with ab138483, 1µg/ml, for 15 mins at room temperature. A goat anti-rabbit biotinylated secondary antibody was used to detect the primary, and visualized using an HRP conjugated ABC system. DAB was used as the chromogen. The section was then counterstained with haematoxylin and mounted with DPX.

For other IHC staining systems (automated and non-automated) customers should optimize variable parameters such as antigen retrieval conditions, primary antibody concentration and antibody incubation times.

Please note: All products are "FOR RESEARCH USE ONLY. NOT FOR USE IN DIAGNOSTIC PROCEDURES"

Our Abpromise to you: Quality guaranteed and expert technical support

- Replacement or refund for products not performing as stated on the datasheet
- Valid for 12 months from date of delivery
- Response to your inquiry within 24 hours
- We provide support in Chinese, English, French, German, Japanese and Spanish
- Extensive multi-media technical resources to help you
- We investigate all quality concerns to ensure our products perform to the highest standards

If the product does not perform as described on this datasheet, we will offer a refund or replacement. For full details of the Abpromise, please visit <https://www.abcam.cn/abpromise> or contact our technical team.

Terms and conditions

- Guarantee only valid for products bought direct from Abcam or one of our authorized distributors