


# Anti-Casein Kinase 1 gamma 2 antibody ab64829

★★★★☆ [1 Abreviews](#) [6 References](#) [2 图像](#)

### 概述

产品名称	Anti-Casein Kinase 1 gamma 2抗体
描述	兔多克隆抗体to Casein Kinase 1 gamma 2
宿主	Rabbit
经测试应用	适用于: WB
种属反应性	与反应: Human 预测可用于: Mouse, Rat 
免疫原	Synthetic peptide derived from N-terminus of human Casein Kinase 1 gamma 2.
阳性对照	HeLa and 293 cell extracts.
常规说明	<p>The Life Science industry has been in the grips of a reproducibility crisis for a number of years. Abcam is leading the way in addressing this with our range of recombinant monoclonal antibodies and knockout edited cell lines for gold-standard validation. Please check that this product meets your needs before purchasing.</p> <p>If you have any questions, special requirements or concerns, please send us an inquiry and/or contact our Support team ahead of purchase. Recommended alternatives for this product can be found below, along with publications, customer reviews and Q&amp;As</p>

### 性能

形式	Liquid
存放说明	Shipped at 4°C. Store at -20°C. Stable for 12 months at -20°C.
存储溶液	pH: 7.40 Preservative: 0.02% Sodium azide Constituents: PBS, 50% Glycerol (glycerin, glycerine), 0.87% Sodium chloride
纯度	Immunogen affinity purified
克隆	多克隆
同种型	IgG

### 应用

The Abpromise guarantee

**Abpromise™** 承诺保证使用ab64829于以下的经测试应用

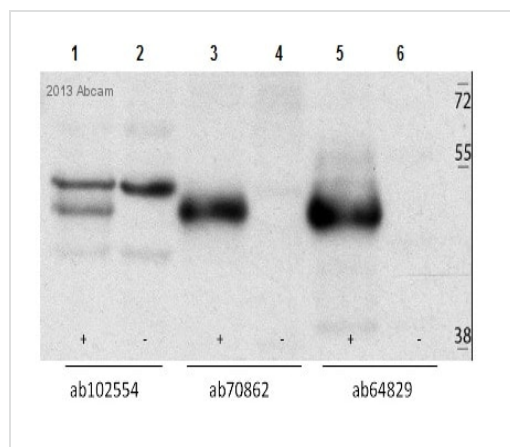
“应用说明”部分 下显示的仅为推荐的起始稀释度;实际最佳的稀释度/浓度应由使用者检定。

应用	Ab评论	说明
WB	★★★★☆ (1)	1/500 - 1/1000. Detects a band of approximately 47 kDa (predicted molecular weight: 47 kDa).

## 靶标

<b>功能</b>	Serine/threonine-protein kinase. Casein kinases are operationally defined by their preferential utilization of acidic proteins such as caseins as substrates. It can phosphorylate a large number of proteins. Participates in Wnt signaling (By similarity). Phosphorylates COL4A3BP/CERT, MTA1 and SMAD3. Involved in brain development and vesicular trafficking and neurotransmitter releasing from small synaptic vesicles. Regulates fast synaptic transmission mediated by glutamate. SMAD3 phosphorylation promotes its ligand-dependent ubiquitination and subsequent proteasome degradation, thus inhibiting SMAD3-mediated TGF-beta responses. Hyperphosphorylation of the serine-repeat motif of COL4A3BP/CERT leads to its inactivation by dissociation from the Golgi complex, thus down-regulating ER-to-Golgi transport of ceramide and sphingomyelin synthesis.
<b>组织特异性</b>	Testis.
<b>序列相似性</b>	Belongs to the protein kinase superfamily. CK1 Ser/Thr protein kinase family. Casein kinase I subfamily. Contains 1 protein kinase domain.
<b>翻译后修饰</b>	Autophosphorylated.
<b>细胞定位</b>	Cytoplasm.

## 图片



Western blot - Anti-Casein Kinase 1 gamma 2 antibody (ab64829)

This image is courtesy of an anonymous Abreview

**Lanes 1-2 :** Anti-Casein Kinase 1 gamma 2 antibody ([ab102554](#))  
**Lanes 3-4 :** Anti-Casein Kinase 1 gamma 2 antibody ([ab70862](#))  
**Lanes 5-6 :** Anti-Casein Kinase 1 gamma 2 antibody (ab64829) at 1/500 dilution

**Lanes 1 & 3 & 5 :** U2OS cells expressing FLAG-tagged CK1G2 plasmid

**Lane 2 :** U2OS cells expressing FLAG tag only plasmid

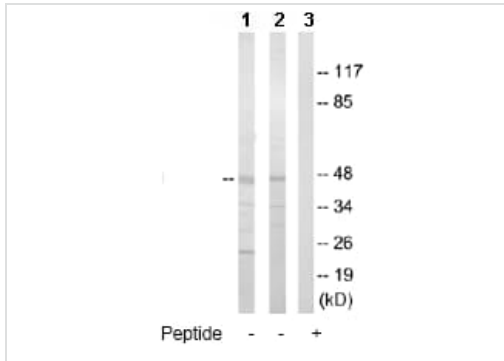
**Lanes 4 & 6 :** U2OS cells expressing FLAG only

### Secondary

**Lanes 5-6 :** HRP-conjugated Goat anti-rabbit polyclonal at 1/1000 dilution

Developed using the ECL technique.

**Predicted band size:** 47 kDa



Western blot - Anti-Casein Kinase 1 gamma 2 antibody (ab64829)

**All lanes :** Anti-Casein Kinase 1 gamma 2 antibody (ab64829) at 1/500 dilution

**Lane 1 :** HeLa cell extract

**Lane 2 :** 293 cell extract

**Lane 3 :** 293 cell extract with immunising peptide at 10 µg

Lysates/proteins at 30 µg per lane.

**Predicted band size:** 47 kDa

**Observed band size:** 47 kDa

**Additional bands at:** 25 kDa, 34 kDa. We are unsure as to the identity of these extra bands.

**Please note:** All products are "FOR RESEARCH USE ONLY. NOT FOR USE IN DIAGNOSTIC PROCEDURES"

### Our Abpromise to you: Quality guaranteed and expert technical support

- Replacement or refund for products not performing as stated on the datasheet
- Valid for 12 months from date of delivery
- Response to your inquiry within 24 hours
- We provide support in Chinese, English, French, German, Japanese and Spanish
- Extensive multi-media technical resources to help you
- We investigate all quality concerns to ensure our products perform to the highest standards

If the product does not perform as described on this datasheet, we will offer a refund or replacement. For full details of the Abpromise, please visit <https://www.abcam.cn/abpromise> or contact our technical team.

### Terms and conditions

- Guarantee only valid for products bought direct from Abcam or one of our authorized distributors