


Anti-CAP1 antibody [EPR8339(B)] ab155079

重组 RabMAb

★★★★☆ **5 Abreviews** **5 References** **8 图像**

概述

产品名称	Anti-CAP1抗体[EPR8339(B)]
描述	兔单克隆抗体[EPR8339(B)] to CAP1
宿主	Rabbit
经测试应用	适用于: Flow Cyt (Intra), WB, IHC-P 不适用于: ICC/IF or IP
种属反应性	与反应: Human 预测可用于: Mouse, Rat 
免疫原	Synthetic peptide. This information is proprietary to Abcam and/or its suppliers.
阳性对照	HeLa, 293T, A431, HepG2 and Caco-2 cell lysates; 293 cells; Prostate tissue.
常规说明	This product is a recombinant monoclonal antibody, which offers several advantages including: <ul style="list-style-type: none"> - High batch-to-batch consistency and reproducibility - Improved sensitivity and specificity - Long-term security of supply - Animal-free production For more information see here . Our RabMAb [®] technology is a patented hybridoma-based technology for making rabbit monoclonal antibodies. For details on our patents, please refer to RabMAb[®] patents .

性能

形式	Liquid
存放说明	Shipped at 4°C. Upon delivery aliquot and store at -20°C. Avoid repeated freeze / thaw cycles.
存储溶液	pH: 7.2 Preservative: 0.01% Sodium azide Constituents: 9% PBS, 40% Glycerol (glycerin, glycerine), 0.05% BSA, 50% Tissue culture supernatant
纯度	Protein A purified
克隆	单克隆
克隆编号	EPR8339(B)

同种型

IgG

应用

The Abpromise guarantee

Abpromise™ 承诺保证使用 ab155079 于以下的经测试应用

“应用说明”部分下显示的仅为推荐的起始稀释度；实际最佳的稀释度/浓度应由使用者检定。

应用	Ab评论	说明
Flow Cyt (Intra)		1/10 - 1/100. ab172730 - Rabbit monoclonal IgG, is suitable for use as an isotype control with this antibody.
WB	★★★★★ (4)	1/1000 - 1/10000. Predicted molecular weight: 52 kDa.
IHC-P		1/100 - 1/250. Perform heat mediated antigen retrieval with citrate buffer pH 6 before commencing with IHC staining protocol.

应用说明

Is unsuitable for ICC/IF or IP.

靶标

功能

Directly regulates filament dynamics and has been implicated in a number of complex developmental and morphological processes, including mRNA localization and the establishment of cell polarity.

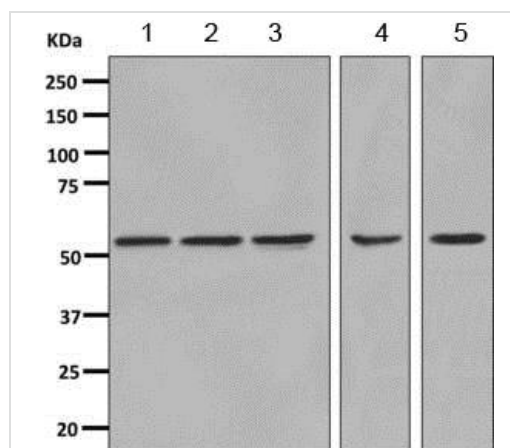
序列相似性

Belongs to the CAP family.
Contains 1 C-CAP/cofactor C-like domain.

细胞定位

Cell membrane.

图片



Western blot - Anti-CAP1 antibody [EPR8339(B)]
(ab155079)

All lanes : Anti-CAP1 antibody [EPR8339(B)] (ab155079) at 1/1000 dilution

Lane 1 : HeLa cell lysate

Lane 2 : 293T cell lysate

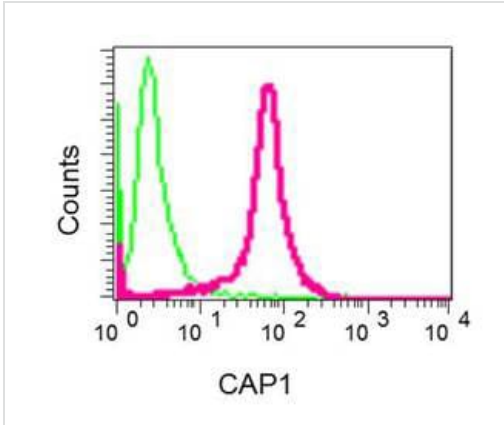
Lane 3 : A431 cell lysate

Lane 4 : HepG2 cell lysate

Lane 5 : Caco-2 cell lysate

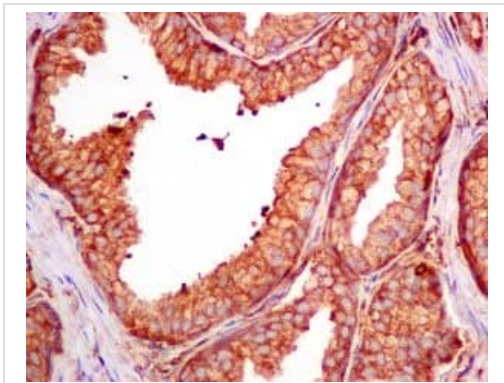
Lysates/proteins at 10 µg per lane.

Predicted band size: 52 kDa



Flow Cytometry (Intracellular) - Anti-CAP1 antibody [EPR8339(B)] (ab155079)

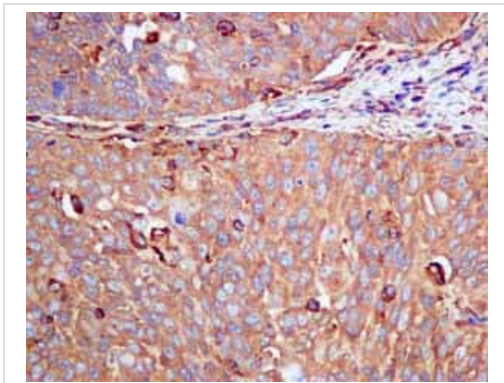
Intracellular flow cytometric analysis of permeabilized 293 cells, labeling CAP1 with ab155079 at 1/10 dilution (red) or Rabbit IgG negative control (green).



Immunohistochemistry (Formalin/PFA-fixed paraffin-embedded sections) - Anti-CAP1 antibody [EPR8339(B)] (ab155079)

Immunohistochemical analysis of paraffin-embedded prostate tissue, labeling CAP1 with ab155079 at 1/100 dilution.

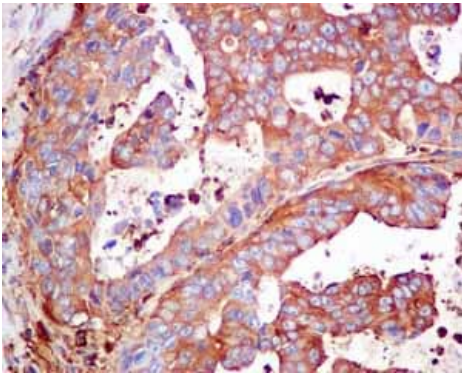
Perform heat mediated antigen retrieval with citrate buffer pH 6 before commencing with IHC staining protocol.



Immunohistochemistry (Formalin/PFA-fixed paraffin-embedded sections) - Anti-CAP1 antibody [EPR8339(B)] (ab155079)

Immunohistochemical analysis of paraffin embedded Human cervical carcinoma tissue using ab155079 showing +ve staining.

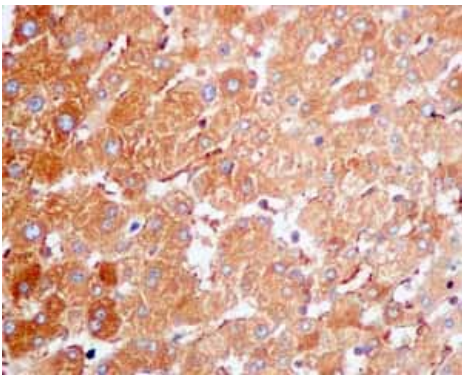
Perform heat mediated antigen retrieval with citrate buffer pH 6 before commencing with IHC staining protocol.



Immunohistochemistry (Formalin/PFA-fixed paraffin-embedded sections) - Anti-CAP1 antibody [EPR8339(B)] (ab155079)

Immunohistochemical analysis of paraffin embedded Human gastric adenocarcinoma tissue using ab155079 showing +ve staining.

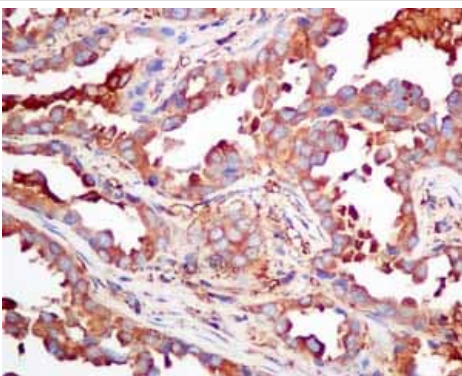
Perform heat mediated antigen retrieval with citrate buffer pH 6 before commencing with IHC staining protocol.



Immunohistochemistry (Formalin/PFA-fixed paraffin-embedded sections) - Anti-CAP1 antibody [EPR8339(B)] (ab155079)

Immunohistochemical analysis of paraffin embedded Human normal liver tissue using ab155079 showing +ve staining.

Perform heat mediated antigen retrieval with citrate buffer pH 6 before commencing with IHC staining protocol.



Immunohistochemistry (Formalin/PFA-fixed paraffin-embedded sections) - Anti-CAP1 antibody [EPR8339(B)] (ab155079)

Immunohistochemical analysis of paraffin embedded Human lung adenocarcinoma tissue using ab155079 showing +ve staining.

Perform heat mediated antigen retrieval with citrate buffer pH 6 before commencing with IHC staining protocol.

Why choose a recombinant antibody?



Research with confidence
Consistent and reproducible results



Long-term and scalable supply
Recombinant technology



Success from the first experiment
Confirmed specificity



Ethical standards compliant
Animal-free production

Anti-CAP1 antibody [EPR8339(B)] (ab155079)

Please note: All products are "FOR RESEARCH USE ONLY. NOT FOR USE IN DIAGNOSTIC PROCEDURES"

Our Abpromise to you: Quality guaranteed and expert technical support

- Replacement or refund for products not performing as stated on the datasheet
- Valid for 12 months from date of delivery
- Response to your inquiry within 24 hours
- We provide support in Chinese, English, French, German, Japanese and Spanish
- Extensive multi-media technical resources to help you
- We investigate all quality concerns to ensure our products perform to the highest standards

If the product does not perform as described on this datasheet, we will offer a refund or replacement. For full details of the Abpromise, please visit <https://www.abcam.cn/abpromise> or contact our technical team.

Terms and conditions

- Guarantee only valid for products bought direct from Abcam or one of our authorized distributors