

Anti-Cannabinoid Receptor 1 antibody ab3558

[1 Abreviews](#) [5 References](#) [1 图像](#)

概述

产品名称	Anti-Cannabinoid Receptor 1抗体
描述	兔多克隆抗体 to Cannabinoid Receptor 1
宿主	Rabbit
特异性	Detects CB1 from Human and Rat tissues as well as transfected Rat CB1.
经测试应用	适用于: IP, ICC/IF, IHC-Fr, IHC-P, Flow Cyt, WB
种属反应性	与反应: Mouse, Rat, Rabbit, Human, Ferret 预测可用于: Cat, Chimpanzee, Rhesus monkey 
免疫原	Recombinant fragment within Human Cannabinoid Receptor 1 aa 1-100 (N terminal). The exact immunogen sequence used to generate this antibody is proprietary information. If additional detail on the immunogen is needed to determine the suitability of the antibody for your needs, please contact our Scientific Support team to discuss your requirements.
常规说明	<p>The Life Science industry has been in the grips of a reproducibility crisis for a number of years. Abcam is leading the way in addressing this with our range of recombinant monoclonal antibodies and knockout edited cell lines for gold-standard validation. Please check that this product meets your needs before purchasing.</p> <p>If you have any questions, special requirements or concerns, please send us an inquiry and/or contact our Support team ahead of purchase. Recommended alternatives for this product can be found below, along with publications, customer reviews and Q&As</p>

性能

形式	Liquid
存放说明	Shipped at 4°C. Store at +4°C short term (1-2 weeks). Upon delivery aliquot. Store at -20°C or -80°C. Avoid freeze / thaw cycle.
存储溶液	Preservative: 0.05% Sodium azide Constituents: 50% Glycerol (glycerin, glycerine), 0.1% BSA, 49% PBS
纯度	Immunogen affinity purified
克隆	多克隆
同种型	IgG

应用

The Abpromise guarantee Abpromise™ 承诺保证使用ab3558于以下的经测试应用

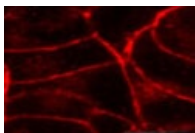
“应用说明”部分 下显示的仅为推荐的起始稀释度;实际最佳的稀释度/浓度应由使用者检定。

应用	Ab评论	说明
IP		Use at an assay dependent concentration. PubMed: 22387618
ICC/IF		1/1000.
IHC-Fr		Use at an assay dependent concentration.
IHC-P		Use at an assay dependent concentration.
Flow Cyt		Use at an assay dependent concentration. PubMed: 20206138 ab171870 - Rabbit polyclonal IgG, is suitable for use as an isotype control with this antibody.
WB		Use at an assay dependent concentration. Predicted molecular weight: 53 kDa. By Western blot, this antibody detects an ~60 kDa protein representing CB1 from rat brain homogenate.

靶标

功能	Involved in cannabinoid-induced CNS effects. Acts by inhibiting adenylate cyclase. Could be a receptor for anandamide. Inhibits L-type Ca(2+) channel current. Isoform 2 and isoform 3 have altered ligand binding.
组织特异性	Widely expressed.
序列相似性	Belongs to the G-protein coupled receptor 1 family.
细胞定位	Cell membrane.

图片



ab3558 at a 1:1000 dilution staining Rat CB1 in transfected AtT20 cells by immunocytochemistry.

Immunocytochemistry/ Immunofluorescence - Anti-Cannabinoid Receptor 1 antibody (ab3558)

Please note: All products are "FOR RESEARCH USE ONLY. NOT FOR USE IN DIAGNOSTIC PROCEDURES"

Our Abpromise to you: Quality guaranteed and expert technical support

- Replacement or refund for products not performing as stated on the datasheet
- Valid for 12 months from date of delivery
- Response to your inquiry within 24 hours
- We provide support in Chinese, English, French, German, Japanese and Spanish
- Extensive multi-media technical resources to help you
- We investigate all quality concerns to ensure our products perform to the highest standards

If the product does not perform as described on this datasheet, we will offer a refund or replacement. For full details of the Abpromise, please visit <https://www.abcam.cn/abpromise> or contact our technical team.

Terms and conditions

- Guarantee only valid for products bought direct from Abcam or one of our authorized distributors