

Anti-CaMKII alpha antibody ab131468

[5 References](#) [2 图像](#)

概述

产品名称	Anti-CaMKII alpha抗体
描述	兔多克隆抗体to CaMKII alpha
宿主	Rabbit
特异性	This antibody does cross-react with CAMKII beta protein
经测试应用	适用于: WB, ICC/IF
种属反应性	与反应: Mouse, Human
免疫原	Synthetic peptide corresponding to Human CaMKII alpha. Sequence: Q-E-T-V-D Run BLAST with Run BLAST with
阳性对照	Human hippocampal region tissue; extracts from mouse brain tissue.
常规说明	<p>The Life Science industry has been in the grips of a reproducibility crisis for a number of years. Abcam is leading the way in addressing this with our range of recombinant monoclonal antibodies and knockout edited cell lines for gold-standard validation. Please check that this product meets your needs before purchasing.</p> <p>If you have any questions, special requirements or concerns, please send us an inquiry and/or contact our Support team ahead of purchase. Recommended alternatives for this product can be found below, along with publications, customer reviews and Q&As</p>

性能

形式	Liquid
存放说明	Shipped at 4°C. Store at -20°C. Stable for 12 months at -20°C.
存储溶液	pH: 7.40 Preservative: 0.02% Sodium azide Constituents: 49% PBS, 50% Glycerol (glycerin, glycerine), 0.88% Sodium chloride PBS without Mg ²⁺ and Ca ²⁺ .
纯度	Immunogen affinity purified
纯化说明	ab131468 was purified by affinity-chromatography using epitope-specific peptide.

克隆 多克隆
同种型 IgG

应用

The Abpromise guarantee **Abpromise™**承诺保证使用ab131468于以下的经测试应用

“应用说明”部分 下显示的仅为推荐的起始稀释度;实际最佳的稀释度/浓度应由使用者检定。

应用	Ab评论	说明
WB		1/500 - 1/1000. Detects a band of approximately 50 kDa (predicted molecular weight: 54 kDa).
ICC/IF		1/100 - 1/200.

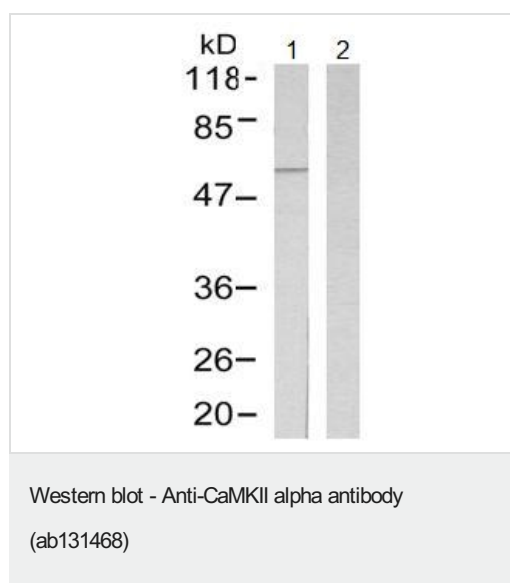
靶标

功能 CaM-kinase II (CAMK2) is a prominent kinase in the central nervous system that may function in long-term potentiation and neurotransmitter release. Member of the NMDAR signaling complex in excitatory synapses it may regulate NMDAR-dependent potentiation of the AMPAR and synaptic plasticity.

序列相似性 Belongs to the protein kinase superfamily. CAMK Ser/Thr protein kinase family. CaMK subfamily. Contains 1 protein kinase domain.

细胞定位 Cell junction > synapse > presynaptic cell membrane. Cell junction > synapse. Postsynaptic lipid rafts.

图片

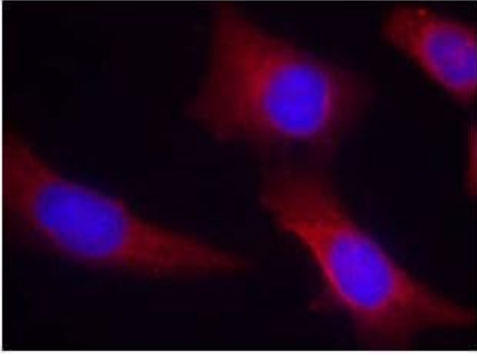


All lanes : Anti-CaMKII alpha antibody (ab131468) at 1/500 dilution

Lane 1 : Extracts from mouse brain tissue

Lane 2 : Extracts from mouse brain tissue with blocking peptide

Predicted band size: 54 kDa



Immunofluorescent analysis of paraffin-embedded Human hippocampal region tissue from the falling sickness disease labelling CaMKII alpha with ab131468 at 1/100 dilution.

Immunocytochemistry/ Immunofluorescence - Anti-CaMKII alpha antibody (ab131468)

Please note: All products are "FOR RESEARCH USE ONLY. NOT FOR USE IN DIAGNOSTIC PROCEDURES"

Our Abpromise to you: Quality guaranteed and expert technical support

- Replacement or refund for products not performing as stated on the datasheet
- Valid for 12 months from date of delivery
- Response to your inquiry within 24 hours
- We provide support in Chinese, English, French, German, Japanese and Spanish
- Extensive multi-media technical resources to help you
- We investigate all quality concerns to ensure our products perform to the highest standards

If the product does not perform as described on this datasheet, we will offer a refund or replacement. For full details of the Abpromise, please visit <https://www.abcam.cn/abpromise> or contact our technical team.

Terms and conditions

- Guarantee only valid for products bought direct from Abcam or one of our authorized distributors