


### Anti-CaMKII alpha antibody ab103840

**3 References**   **2 图像**

#### 概述

产品名称	Anti-CaMKII alpha抗体
描述	兔多克隆抗体to CaMKII alpha
宿主	Rabbit
经测试应用	适用于: WB, IHC-P
种属反应性	与反应: Mouse, Rat 预测可用于: Horse, Chicken, Cow, Dog, Human, Pig, Orangutan 
免疫原	Synthetic peptide within Human CaMKII alpha aa 400 to the C-terminus conjugated to keyhole limpet haemocyanin. The exact sequence is proprietary. (Peptide available as <a href="#">ab115931</a> )
阳性对照	WB: Mouse brain; Rat brain; Mouse cortex; Rat cortex. IHC-P: FFPE rat brain tissue sections.
常规说明	<p>The Life Science industry has been in the grips of a reproducibility crisis for a number of years. Abcam is leading the way in addressing this with our range of recombinant monoclonal antibodies and knockout edited cell lines for gold-standard validation. Please check that this product meets your needs before purchasing.</p> <p>If you have any questions, special requirements or concerns, please send us an inquiry and/or contact our Support team ahead of purchase. Recommended alternatives for this product can be found below, along with publications, customer reviews and Q&amp;As</p>

#### 性能

形式	Liquid
存放说明	Shipped at 4°C. Store at +4°C short term (1-2 weeks). Upon delivery aliquot. Store at -20°C or -80°C. Avoid freeze / thaw cycle.
存储溶液	pH: 7.40 Preservative: 0.02% Sodium azide Constituent: PBS
纯度	Batches of this product that have a concentration < 1mg/ml may have BSA added as a stabilising agent. If you would like information about the formulation of a specific lot, please contact our scientific support team who will be happy to help. Immunogen affinity purified

克隆 多克隆  
同种型 IgG

## 应用

**The Abpromise guarantee** **Abpromise™** 承诺保证使用ab103840于以下的经测试应用

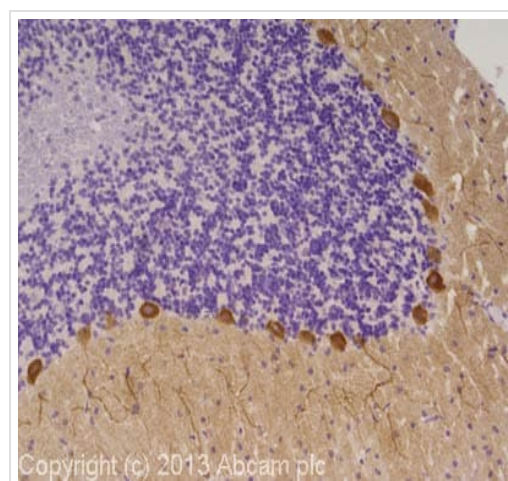
“应用说明”部分 下显示的仅为推荐的起始稀释度;实际最佳的稀释度/浓度应由使用者检定。

应用	Ab评论	说明
WB		Use a concentration of 1 µg/ml. Detects a band of approximately 54 kDa (predicted molecular weight: 54 kDa).
IHC-P		Use a concentration of 1 µg/ml. Perform heat mediated antigen retrieval with citrate buffer pH 6 before commencing with IHC staining protocol.

## 靶标

功能	CaM-kinase II (CAMK2) is a prominent kinase in the central nervous system that may function in long-term potentiation and neurotransmitter release. Member of the NMDAR signaling complex in excitatory synapses it may regulate NMDAR-dependent potentiation of the AMPAR and synaptic plasticity.
序列相似性	Belongs to the protein kinase superfamily. CAMK Ser/Thr protein kinase family. CaMK subfamily. Contains 1 protein kinase domain.
细胞定位	Cell junction > synapse > presynaptic cell membrane. Cell junction > synapse. Postsynaptic lipid rafts.

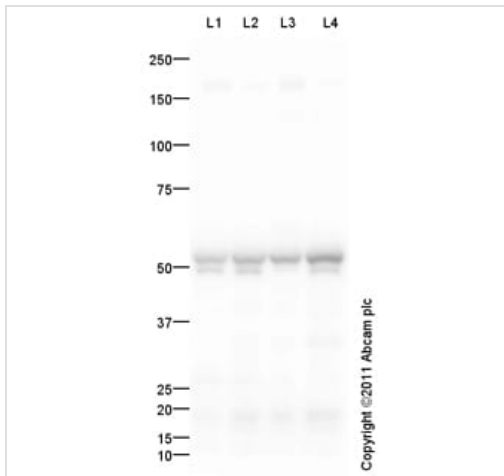
## 图片



Immunohistochemistry (Formalin/PFA-fixed paraffin-embedded sections) - Anti-CaMKII alpha antibody (ab103840)

IHC image of CaMKII alpha staining in rat brain formalin fixed paraffin embedded tissue section, performed on a Leica Bond system using the standard protocol F. The section was pre-treated using heat mediated antigen retrieval with sodium citrate buffer (pH6, epitope retrieval solution 1) for 20 mins. The section was then incubated with ab103840, 1µg/ml, for 15 mins at room temperature and detected using an HRP conjugated compact polymer system. DAB was used as the chromogen. The section was then counterstained with haematoxylin and mounted with DPX.

For other IHC staining systems (automated and non-automated) customers should optimize variable parameters such as antigen retrieval conditions, primary antibody concentration and antibody incubation times.



Western blot - Anti-CaMKII alpha antibody  
(ab103840)

**All lanes :** Anti-CaMKII alpha antibody (ab103840) at 1 µg/ml

**Lane 1 :** Brain (Mouse) Tissue Lysate

**Lane 2 :** Brain (Rat) Tissue Lysate

**Lane 3 :** Mouse cortex Mouse Tissue Lysate

**Lane 4 :** Rat Cortex Tissue Lysate

Lysates/proteins at 10 µg per lane.

#### Secondary

**All lanes :** Goat Anti-Rabbit IgG H&L (HRP) preadsorbed  
(**ab97080**) at 1/5000 dilution

Developed using the ECL technique.

Performed under reducing conditions.

**Predicted band size:** 54 kDa

**Observed band size:** 50,54 kDa

**Exposure time:** 1 minute

**Please note:** All products are "FOR RESEARCH USE ONLY. NOT FOR USE IN DIAGNOSTIC PROCEDURES"

#### Our Abpromise to you: Quality guaranteed and expert technical support

- Replacement or refund for products not performing as stated on the datasheet
- Valid for 12 months from date of delivery
- Response to your inquiry within 24 hours
- We provide support in Chinese, English, French, German, Japanese and Spanish
- Extensive multi-media technical resources to help you
- We investigate all quality concerns to ensure our products perform to the highest standards

If the product does not perform as described on this datasheet, we will offer a refund or replacement. For full details of the Abpromise, please visit <https://www.abcam.cn/abpromise> or contact our technical team.

#### Terms and conditions

- Guarantee only valid for products bought direct from Abcam or one of our authorized distributors