


Anti-CaMK2 beta gamma delta antibody ab79359

2 图像

概述

产品名称	Anti-CaMK2 beta gamma delta抗体
描述	兔多克隆抗体to CaMK2 beta gamma delta
宿主	Rabbit
特异性	Antibody detects endogenous levels of total CaMK2-beta/gamma/delta protein.
经测试应用	适用于: WB, IHC-P
种属反应性	与反应: Rat, Human 预测可用于: Mouse 
免疫原	Synthesized non-phosphopeptide derived from human CaMK2-beta/gamma/delta around the phosphorylation site of threonine 287 (Q-E-T ^P -V-E).
阳性对照	Human brain tissue and rat brain cell extract
常规说明	<p>The Life Science industry has been in the grips of a reproducibility crisis for a number of years. Abcam is leading the way in addressing this with our range of recombinant monoclonal antibodies and knockout edited cell lines for gold-standard validation. Please check that this product meets your needs before purchasing.</p> <p>If you have any questions, special requirements or concerns, please send us an inquiry and/or contact our Support team ahead of purchase. Recommended alternatives for this product can be found below, along with publications, customer reviews and Q&As</p>

性能

形式	Liquid
存放说明	Shipped at 4°C. Store at -20°C. Stable for 12 months at -20°C.
存储溶液	<p>pH: 7.40</p> <p>Preservative: 0.02% Sodium azide</p> <p>Constituents: PBS, 50% Glycerol (glycerin, glycerine), 0.87% Sodium chloride</p>
纯度	Without Mg ²⁺ and Ca ²⁺
克隆	Immunogen affinity purified
同种型	多克隆
	IgG

应用

The Abpromise guarantee Abpromise™承诺保证使用ab79359于以下的经测试应用

“应用说明”部分 下显示的仅为推荐的起始稀释度;实际最佳的稀释度/浓度应由使用者检定。

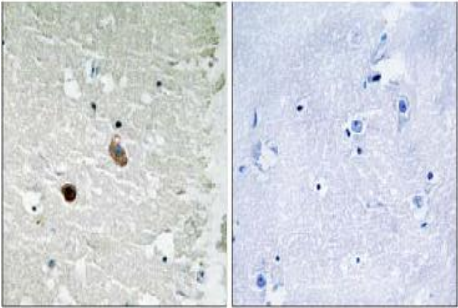
应用	Ab评论	说明
WB		1/500 - 1/1000. Predicted molecular weight: 73 kDa.
IHC-P		1/50 - 1/100.

靶标

相关性 The product of this gene belongs to the serine/threonine protein kinase family and to the Ca(2+)/calmodulin-dependent protein kinase subfamily. Calcium signaling is crucial for several aspects of plasticity at glutamatergic synapses. In mammalian cells, the enzyme is composed of four different chains: alpha, beta, gamma, and delta. It is possible that distinct isoforms of this chain have different cellular localizations and interact differently with calmodulin. Eight transcript variants encoding eight distinct isoforms have been identified for this gene.

细胞定位 Cytoplasmic and Nuclear

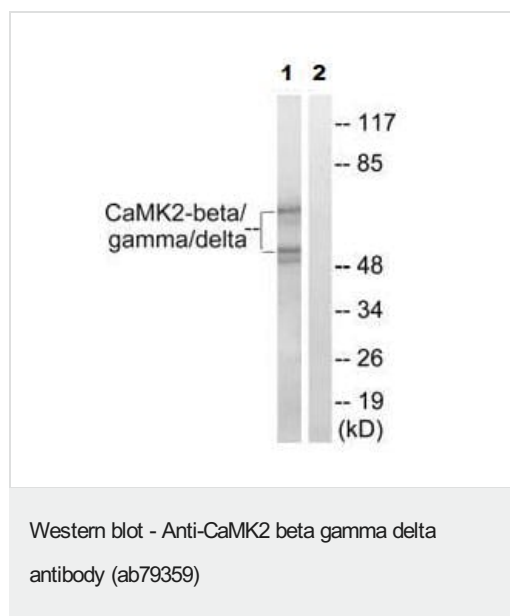
图片



Peptide - **Peptide +**

Immunohistochemistry (Formalin/PFA-fixed paraffin-embedded sections) - Anti-CaMK2 beta gamma delta antibody (ab79359)

Immunohistochemistry analysis of paraffin-embedded human brain tissue using CaMK2-β/γ/δ (Ab-287) antibody at 1/50-1/100 dilution.



All lanes : Anti-CaMK2 beta gamma delta antibody (ab79359) at 1/500 dilution

Lane 1 : Rat brain cell extract

Lane 2 : Rat brain cell extract with immunising peptide at 10 µg

Lysates/proteins at 30 µg per lane.

Predicted band size: 73 kDa

Observed band size: ~73 kDa

Additional bands at: ~50 kDa. We are unsure as to the identity of these extra bands.

Please note: All products are "FOR RESEARCH USE ONLY. NOT FOR USE IN DIAGNOSTIC PROCEDURES"

Our Abpromise to you: Quality guaranteed and expert technical support

- Replacement or refund for products not performing as stated on the datasheet
- Valid for 12 months from date of delivery
- Response to your inquiry within 24 hours
- We provide support in Chinese, English, French, German, Japanese and Spanish
- Extensive multi-media technical resources to help you
- We investigate all quality concerns to ensure our products perform to the highest standards

If the product does not perform as described on this datasheet, we will offer a refund or replacement. For full details of the Abpromise, please visit <https://www.abcam.cn/abpromise> or contact our technical team.

Terms and conditions

- Guarantee only valid for products bought direct from Abcam or one of our authorized distributors