


Anti-Calsequestrin 2 antibody ab96387

3 图像

概述

产品名称	Anti-Calsequestrin 2抗体
描述	兔多克隆抗体to Calsequestrin 2
宿主	Rabbit
经测试应用	适用于: IHC-P, WB
种属反应性	与反应: Mouse, Human 预测可用于: Rat, Rabbit, Cow 
免疫原	Recombinant fragment corresponding to Human Calsequestrin 2 aa 124-398. Database link: O14958
阳性对照	IHC-P: Cal27 xenograft, mouse muscle tissue. WB: H1299 whole cell lysate.
常规说明	<p>The Life Science industry has been in the grips of a reproducibility crisis for a number of years. Abcam is leading the way in addressing this with our range of recombinant monoclonal antibodies and knockout edited cell lines for gold-standard validation. Please check that this product meets your needs before purchasing.</p> <p>If you have any questions, special requirements or concerns, please send us an inquiry and/or contact our Support team ahead of purchase. Recommended alternatives for this product can be found below, along with publications, customer reviews and Q&As</p>

性能

形式	Liquid
存放说明	Shipped at 4°C. Store at +4°C short term (1-2 weeks). Upon delivery aliquot. Store at -20°C or -80°C. Avoid freeze / thaw cycle.
存储溶液	pH: 7.00 Preservative: 0.01% Thimerosal (merthiolate) Constituents: 1.21% Tris, 0.75% Glycine, 10% Glycerol (glycerin, glycerine)
纯度	Immunogen affinity purified
克隆	多克隆
同种型	IgG

应用

The Abpromise guarantee **Abpromise™**承诺保证使用ab96387于以下的经测试应用

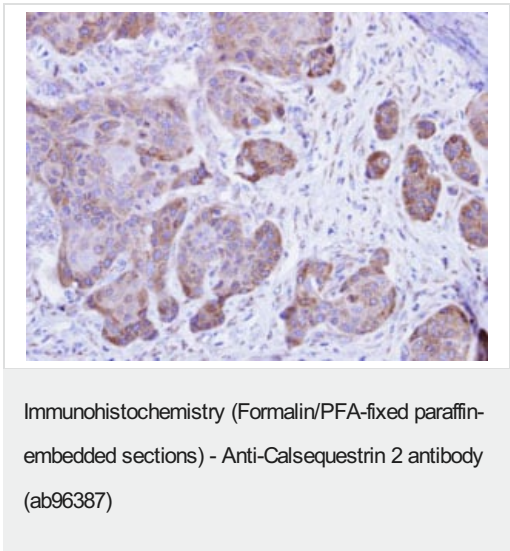
“应用说明”部分 下显示的仅为推荐的起始稀释度;实际最佳的稀释度/浓度应由使用者检定。

应用	Ab评论	说明
IHC-P		1/100 - 1/1000. Antigen retrieval is not essential but may optimise staining.
WB		1/500 - 1/3000. Predicted molecular weight: 46 kDa.

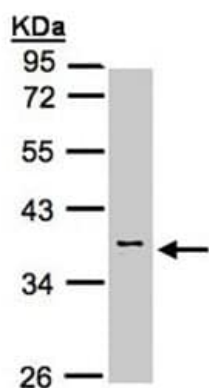
靶标

功能	Calsequestrin is a high-capacity, moderate affinity, calcium-binding protein and thus acts as an internal calcium store in muscle. The release of calcium bound to calsequestrin through a calcium release channel triggers muscle contraction. Binds 40 to 50 moles of calcium.
疾病相关	Defects in CASQ2 are the cause of catecholaminergic polymorphic ventricular tachycardia type 2 (CPVT2) [MIM:611938]; also known as stress-induced polymorphic ventricular tachycardia (VTSIP). CPVT2 is an autosomal recessive form of arrhythmogenic disorder characterized by stress-induced, bidirectional ventricular tachycardia that may degenerate into cardiac arrest and cause sudden death.
序列相似性	Belongs to the calsequestrin family.
细胞定位	Sarcoplasmic reticulum lumen. This isoform of calsequestrin occurs in the sarcoplasmic reticulum's terminal cisternae luminal spaces of cardiac and slow skeletal muscle cells.

图片



Immunohistochemical analysis of paraffin-embedded Cal27 xenograft, using ab96387 at 1:500 dilution.

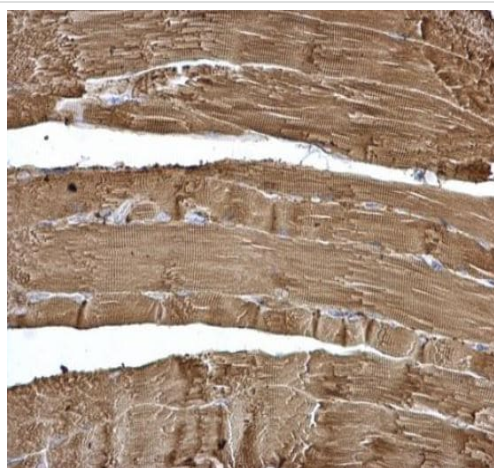


Western blot - Anti-Calsequestrin 2 antibody
(ab96387)

Anti-Calsequestrin 2 antibody (ab96387) at 1/1000 dilution +
H1299 whole cell lysate at 30 µg

Predicted band size: 46 kDa

10% SDS PAGE



Immunohistochemistry (Formalin/PFA-fixed paraffin-
embedded sections) - Anti-Calsequestrin 2 antibody
(ab96387)

Paraffin embedded mouse muscle tissue stained for Calsequestrin-
2 using ab96387 at 1/500 dilution in immunohistochemical analysis.

Please note: All products are "FOR RESEARCH USE ONLY. NOT FOR USE IN DIAGNOSTIC PROCEDURES"

Our Abpromise to you: Quality guaranteed and expert technical support

- Replacement or refund for products not performing as stated on the datasheet
- Valid for 12 months from date of delivery
- Response to your inquiry within 24 hours
- We provide support in Chinese, English, French, German, Japanese and Spanish

- Extensive multi-media technical resources to help you
- We investigate all quality concerns to ensure our products perform to the highest standards

If the product does not perform as described on this datasheet, we will offer a refund or replacement. For full details of the Abpromise, please visit <https://www.abcam.cn/abpromise> or contact our technical team.

Terms and conditions

- Guarantee only valid for products bought direct from Abcam or one of our authorized distributors