

Anti-Calreticulin antibody [FMC 75] ab22683

★★★★★ [22 Abreviews](#) [71 References](#) [3 图像](#)

概述

| | |
|-------|---|
| 产品名称 | Anti-Calreticulin抗体[FMC 75] |
| 描述 | 小鼠单克隆抗体[FMC 75] to Calreticulin |
| 宿主 | Mouse |
| 经测试应用 | 适用于: Flow Cyt (Intra), ICC/IF, IHC-P |
| 种属反应性 | 与反应: Human 预测可用于: Chinese hamster  |
| 免疫原 | Fusion protein corresponding to Calreticulin. Calreticulin-maltose binding fusion protein. Database link: P27797 |
| 阳性对照 | WB: HeLa whole cell lysate. IHC-P: Human placenta tissue. ICC/IF: HeLa cell lysate. Flow: HeLa cells. |
| 常规说明 | <p>This product was changed from ascites to tissue culture supernatant on 22nd May 2019. Please note that the dilutions may need to be adjusted accordingly. If you have any questions, please do not hesitate to contact our scientific support team.</p> <p>The Life Science industry has been in the grips of a reproducibility crisis for a number of years. Abcam is leading the way in addressing this with our range of recombinant monoclonal antibodies and knockout edited cell lines for gold-standard validation. Please check that this product meets your needs before purchasing.</p> <p>If you have any questions, special requirements or concerns, please send us an inquiry and/or contact our Support team ahead of purchase. Recommended alternatives for this product can be found below, along with publications, customer reviews and Q&As</p> |

性能

| | |
|------|---|
| 形式 | Liquid |
| 存放说明 | Shipped at 4°C. Upon delivery aliquot and store at -20°C. Avoid freeze / thaw cycles. |
| 存储溶液 | Preservative: 0.09% Sodium azide Constituent: PBS |
| 纯度 | Protein G purified |
| 纯化说明 | Purified from TCS. |
| 克隆 | 单克隆 |

| | |
|------|--------|
| 克隆编号 | FMC 75 |
| 同种型 | IgG1 |
| 轻链类型 | kappa |

应用

The Abpromise guarantee **Abpromise™**承诺保证使用ab22683于以下的经测试应用

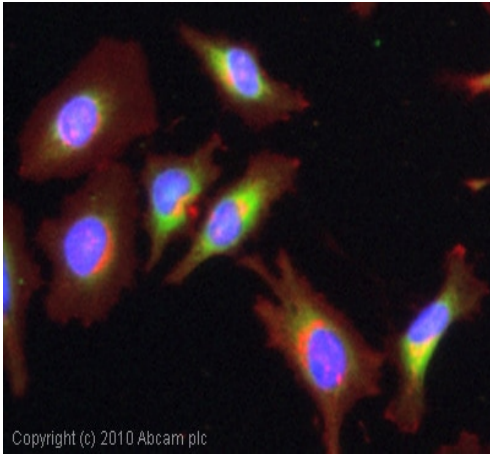
“应用说明”部分 下显示的仅为推荐的起始稀释度;实际最佳的稀释度/浓度应由使用者检定。

| 应用 | Ab评论 | 说明 |
|------------------|------------|--|
| Flow Cyt (Intra) | | Use at an assay dependent concentration. (Additional resource: PMID - 18689689) ab170190 - Mouse monoclonal IgG1, is suitable for use as an isotype control with this antibody. |
| ICC/IF | ★★★★★ (10) | Use at an assay dependent concentration. Fix and permeabilize cells prior to staining. |
| IHC-P | ★★★★★ (2) | Use at an assay dependent concentration. Perform heat mediated antigen retrieval before commencing with IHC staining protocol. |

靶标

| | |
|-------|---|
| 功能 | Molecular calcium-binding chaperone promoting folding, oligomeric assembly and quality control in the ER via the calreticulin/calnexin cycle. This lectin interacts transiently with almost all of the monoglucosylated glycoproteins that are synthesized in the ER. Interacts with the DNA-binding domain of NR3C1 and mediates its nuclear export. |
| 序列相似性 | Belongs to the calreticulin family. |
| 结构域 | Can be divided into a N-terminal globular domain, a proline-rich P-domain forming an elongated arm-like structure and a C-terminal acidic domain. The P-domain binds one molecule of calcium with high affinity, whereas the acidic C-domain binds multiple calcium ions with low affinity. The interaction with glycans occurs through a binding site in the globular lectin domain. The zinc binding sites are localized to the N-domain. Associates with PDIA3 through the tip of the extended arm formed by the P-domain. |
| 细胞定位 | Endoplasmic reticulum lumen. Cytoplasm > cytosol. Secreted > extracellular space > extracellular matrix. Cell surface. Also found in cell surface (T cells), cytosol and extracellular matrix. Associated with the lytic granules in the cytolytic T-lymphocytes. |

图片

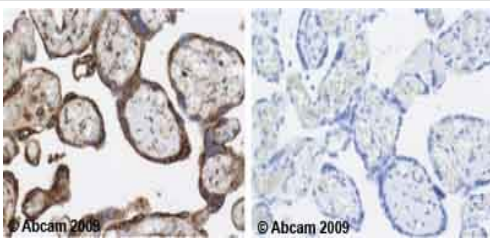


Copyright (c) 2010 Abcam plc

Immunocytochemistry/ Immunofluorescence - Anti-Calreticulin antibody [FMC 75] (ab22683)

ICC/IF image of ab22683 stained HeLa cells. The cells were 100% methanol fixed (5 min) and then incubated in 1%BSA / 10% normal goat serum / 0.3M glycine in 0.1% PBS-Tween for 1h to permeabilise the cells and block non-specific protein-protein interactions. The cells were then incubated with the antibody (ab22683, 1µg/ml) overnight at +4°C. The secondary antibody (green) was Alexa Fluor® 488 goat anti-mouse IgG (H+L) used at a 1/1000 dilution for 1h. Alexa Fluor® 594 WGA was used to label plasma membranes (red) at a 1/200 dilution for 1h. DAPI was used to stain the cell nuclei (blue) at a concentration of 1.43µM.

This image was generated using the ascites version of the product.



Abcam 2009

© Abcam 2009

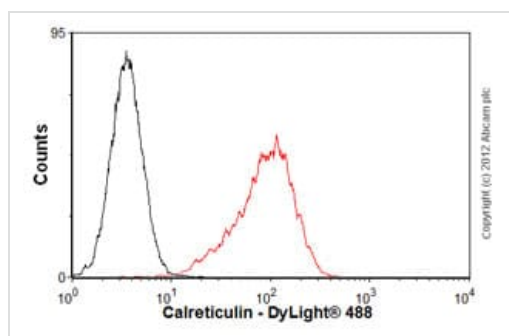
Immunohistochemistry (Formalin/PFA-fixed paraffin-embedded sections) - Anti-Calreticulin antibody [FMC 75] (ab22683)

Ab22683 staining human placenta. Staining is localised to the cytoplasm.

Left panel: with primary antibody at 1 µg/ml. Right panel: isotype control.

Sections were stained using an automated system DAKO Autostainer Plus, at room temperature. Sections were rehydrated and antigen retrieved with the Dako 3-in-1 AR buffer citrate pH 6.0 in a DAKO PT Link. Slides were peroxidase blocked in 3% H₂O₂ in methanol for 10 minutes. They were then blocked with Dako Protein block for 10 minutes (containing casein 0.25% in PBS), then incubated with primary antibody for 20 minutes, and detected with Dako Envision Flex amplification kit for 30 minutes. Colorimetric detection was completed with diaminobenzidine for 5 minutes. Slides were counterstained with Haematoxylin and coverslipped under DePeX. Please note that for manual staining we recommend to optimize the primary antibody concentration and incubation time (overnight incubation), and amplification may be required.

This image was generated using the ascites version of the product.



Flow Cytometry (Intracellular) - Anti-Calreticulin antibody [FMC 75] (ab22683)

Overlay histogram showing HeLa cells stained with ab22683 (red line). The cells were fixed with 80% methanol (5 min) and then permeabilized with 0.1% PBS-Tween for 20 min. The cells were then incubated in 1x PBS / 10% normal goat serum / 0.3M glycine to block non-specific protein-protein interactions followed by the antibody (ab22683, 1µg/1x10⁶ cells) for 30 min at 22°C. The secondary antibody used was DyLight® 488 goat anti-mouse IgG (H+L) ([ab96879](#)) at 1/500 dilution for 30 min at 22°C. Isotype control antibody (black line) was mouse IgG1 [ICIGG1] ([ab91353](#), 2µg/1x10⁶ cells) used under the same conditions. Acquisition of >5,000 events was performed. This antibody gave a positive signal in HeLa cells fixed with 4% paraformaldehyde (10 min)/permeabilized with 0.1% PBS-Tween for 20 min used under the same conditions.

This image was generated using the ascites version of the product.

Please note: All products are "FOR RESEARCH USE ONLY. NOT FOR USE IN DIAGNOSTIC PROCEDURES"

Our Abpromise to you: Quality guaranteed and expert technical support

- Replacement or refund for products not performing as stated on the datasheet
- Valid for 12 months from date of delivery
- Response to your inquiry within 24 hours
- We provide support in Chinese, English, French, German, Japanese and Spanish
- Extensive multi-media technical resources to help you
- We investigate all quality concerns to ensure our products perform to the highest standards

If the product does not perform as described on this datasheet, we will offer a refund or replacement. For full details of the Abpromise, please visit <https://www.abcam.cn/abpromise> or contact our technical team.

Terms and conditions

- Guarantee only valid for products bought direct from Abcam or one of our authorized distributors