




Anti-Calreticulin antibody ab94935

1 References 1 图像

概述	
产品名称	Anti-Calreticulin抗体
描述	鸡多克隆抗体to Calreticulin
宿主	Chicken
经测试应用	适用于: WB
种属反应性	与反应: Mouse, Human 预测可用于: Rabbit, Cow, Pig, Zebrafish, Cynomolgus monkey 
免疫原	Synthetic peptide corresponding to Mouse Calreticulin aa 24-43. Sequence: KEQFLDGDWTNRWVESKHK (Peptide available as ab5838) <div> Run BLAST with  Run BLAST with</div>
阳性对照	WB: A-549, HEK-293 cell lysate; Mouse Brain lysate.
常规说明	<p>The Life Science industry has been in the grips of a reproducibility crisis for a number of years. Abcam is leading the way in addressing this with our range of recombinant monoclonal antibodies and knockout edited cell lines for gold-standard validation. Please check that this product meets your needs before purchasing.</p> <p>If you have any questions, special requirements or concerns, please send us an inquiry and/or contact our Support team ahead of purchase. Recommended alternatives for this product can be found below, along with publications, customer reviews and Q&As</p>
性能	
形式	Liquid
存放说明	Shipped at 4°C. Upon delivery aliquot and store at -20°C. Avoid repeated freeze / thaw cycles.
存储溶液	Preservative: 0.05% Sodium azide Constituent: 0.1% BSA
纯度	Immunogen affinity purified
克隆	多克隆
同种型	IgY

应用

The Abpromise guarantee **Abpromise™**承诺保证使用ab94935于以下的经测试应用

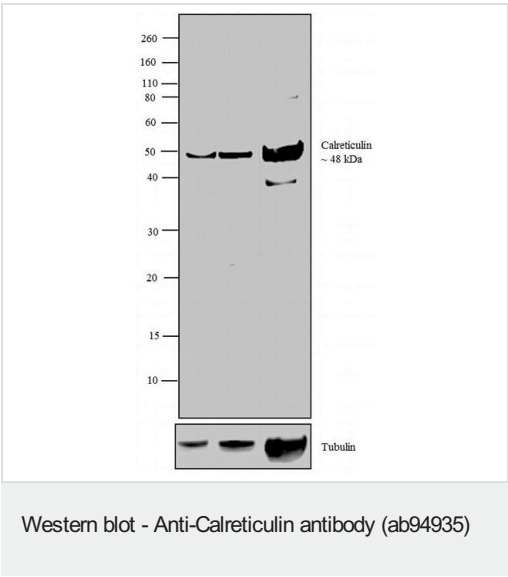
“应用说明”部分 下显示的仅为推荐的起始稀释度;实际最佳的稀释度/浓度应由使用者检定。

应用	Ab评论	说明
WB		1/1000. Detects a band of approximately 60-66 kDa (predicted molecular weight: 48 kDa).

靶标

功能	Molecular calcium-binding chaperone promoting folding, oligomeric assembly and quality control in the ER via the calreticulin/calnexin cycle. This lectin interacts transiently with almost all of the monoglucosylated glycoproteins that are synthesized in the ER. Interacts with the DNA-binding domain of NR3C1 and mediates its nuclear export.
序列相似性	Belongs to the calreticulin family.
结构域	Can be divided into a N-terminal globular domain, a proline-rich P-domain forming an elongated arm-like structure and a C-terminal acidic domain. The P-domain binds one molecule of calcium with high affinity, whereas the acidic C-domain binds multiple calcium ions with low affinity. The interaction with glycans occurs through a binding site in the globular lectin domain. The zinc binding sites are localized to the N-domain. Associates with PDIA3 through the tip of the extended arm formed by the P-domain.
细胞定位	Endoplasmic reticulum lumen. Cytoplasm > cytosol. Secreted > extracellular space > extracellular matrix. Cell surface. Also found in cell surface (T cells), cytosol and extracellular matrix. Associated with the lytic granules in the cytolytic T-lymphocytes.

图片



All lanes : Anti-Calreticulin antibody (ab94935) at 1/2000 dilution

- Lane 1 :** A-549 cell lysate
- Lane 2 :** HEK-293 cell lysate
- Lane 3 :** Mouse Brain lysate

Lysates/proteins at 30 µg per lane.

Secondary
All lanes : Goat anti-Chicken IgY (H+L) Secondary Antibody, HRP conjugate at 0.4 µg/ml

Predicted band size: 48 kDa

Please note: All products are "FOR RESEARCH USE ONLY. NOT FOR USE IN DIAGNOSTIC PROCEDURES"

Our Abpromise to you: Quality guaranteed and expert technical support

- Replacement or refund for products not performing as stated on the datasheet
- Valid for 12 months from date of delivery
- Response to your inquiry within 24 hours

- We provide support in Chinese, English, French, German, Japanese and Spanish
- Extensive multi-media technical resources to help you
- We investigate all quality concerns to ensure our products perform to the highest standards

If the product does not perform as described on this datasheet, we will offer a refund or replacement. For full details of the Abpromise, please visit <https://www.abcam.cn/abpromise> or contact our technical team.

Terms and conditions

- Guarantee only valid for products bought direct from Abcam or one of our authorized distributors