

# Anti-C5a-R antibody [EPR23278-117] ab252435

**重组 RabMAb**

**1 References** **6 图像**

### 概述

产品名称	Anti-C5a-R抗体[EPR23278-117]
描述	兔单克隆抗体[EPR23278-117] to C5a-R
宿主	Rabbit
经测试应用	<b>适用于:</b> ICC/IF, Flow Cyt, IHC-P <b>不适用于:</b> IP or WB
种属反应性	<b>与反应:</b> Human
免疫原	Synthetic peptide. This information is proprietary to Abcam and/or its suppliers.
阳性对照	IHC-P: Human spleen and lung tissue. Clear cell carcinoma of human kidney tissue. ICC/IF: Human PBMCs. Flow Cyt: Human peripheral blood mononuclear cells.
常规说明	This product is a recombinant monoclonal antibody, which offers several advantages including: <ul style="list-style-type: none"> <li>- High batch-to-batch consistency and reproducibility</li> <li>- Improved sensitivity and specificity</li> <li>- Long-term security of supply</li> <li>- Animal-free production</li> </ul> For more information <a href="#">see here</a> . Our RabMAb <sup>®</sup> technology is a patented hybridoma-based technology for making rabbit monoclonal antibodies. For details on our patents, please refer to <a href="#">RabMAb<sup>®</sup> patents</a> .

### 性能

形式	Liquid
存放说明	Shipped at 4°C. Store at +4°C short term (1-2 weeks). Upon delivery aliquot. Store at -20°C long term. Avoid freeze / thaw cycle.
存储溶液	pH: 7.2 Preservative: 0.01% Sodium azide Constituents: PBS, 40% Glycerol (glycerin, glycerine), 0.05% BSA
纯度	Protein A purified
克隆	单克隆
克隆编号	EPR23278-117

同种型

IgG

应用

The Abpromise guarantee

**Abpromise™**承诺保证使用ab252435于以下的经测试应用

“应用说明”部分 下显示的仅为推荐的起始稀释度;实际最佳的稀释度/浓度应由使用者检定。

应用	Ab评论	说明
ICC/IF		1/50.
Flow Cyt		1/500.
IHC-P		1/2000. Perform heat mediated antigen retrieval with Tris/EDTA buffer pH 9.0 before commencing with IHC staining protocol.

应用说明

Is unsuitable for IP or WB.

靶标

功能

Receptor for the chemotactic and inflammatory peptide anaphylatoxin C5a. This receptor stimulates chemotaxis, granule enzyme release and superoxide anion production.

序列相似性

Belongs to the G-protein coupled receptor 1 family.

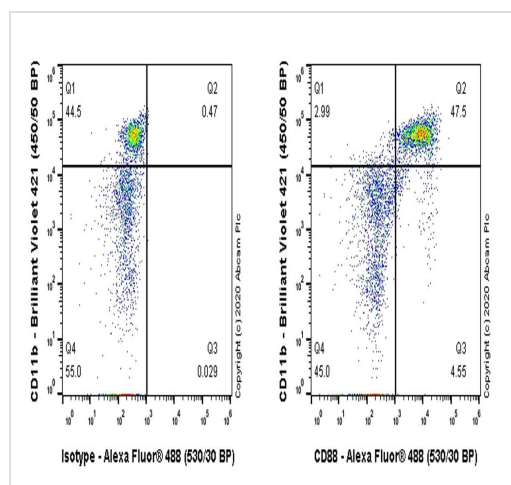
翻译后修饰

Sulfation plays a critical role in the association of the receptor with C5a, but no significant role in the ability of the receptor to transduce a signal and mobilize calcium in response to a small peptide agonist.

细胞定位

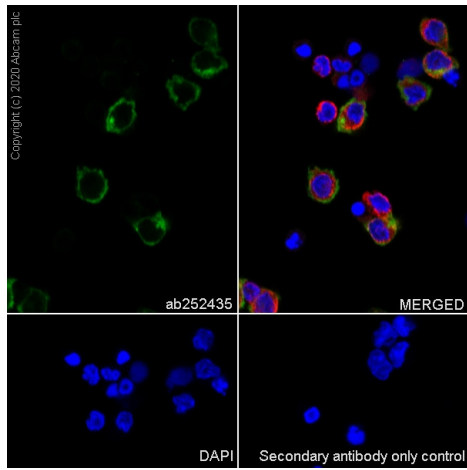
Cell membrane.

图片



Flow cytometric analysis of human peripheral blood mononuclear cell (PBMC) cells labelling C5a-R with ab252435 at 1/500 dilution (0.1µg)/ Right panel, compared with a Rabbit monoclonal IgG (**ab172730**) / Left panel, isotype control. Goat anti rabbit IgG (Alexa Fluor® 488, **ab150077**) at 1/2000 dilution was used as the secondary antibody. Cells were stained with rabbit IgG (Left) or ab252435 (Right). Then stained with anti-CD11b conjugated to BV421. Gated on viable cells.

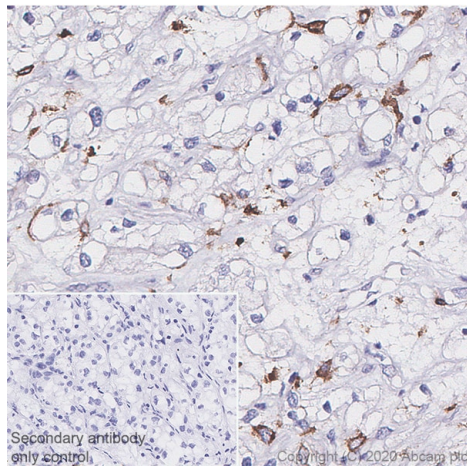
Flow Cytometry - Anti-C5a-R antibody [EPR23278-117] (ab252435)



Immunocytochemistry/ Immunofluorescence - Anti-C5a-R antibody [EPR23278-117] (ab252435)

Immunofluorescent analysis of 4% Paraformaldehyde-fixed, 0.1% Triton X-100 permeabilized human PBMCs labelling C5a-R with ab252435 at 1/50 dilution, followed by **ab150077** Goat Anti-Rabbit IgG H&L (Alexa Fluor® 488) antibody at 1/1000 2 µg/ml dilution (Green). Confocal image showing cytoplasmic and membranous staining in subsets of human PBMC. **ab195889** Anti-alpha Tubulin mouse monoclonal antibody - Microtubule Marker (Alexa Fluor® 594) was used to counterstain tubulin at 1/200 2.5 µg/ml dilution (Red). The nuclear counterstain was DAPI (Blue).

Secondary antibody only control: Secondary antibody is **ab150077** Goat Anti-Rabbit IgG H&L (Alexa Fluor® 488) at 1000 2 µg/ml dilution.

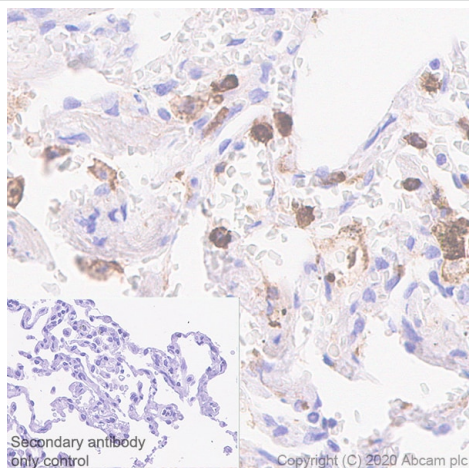


Immunohistochemistry (Formalin/PFA-fixed paraffin-embedded sections) - Anti-C5a-R antibody [EPR23278-117] (ab252435)

Immunohistochemical analysis of paraffin-embedded clear cell carcinoma of human kidney tissue labeling C5a-R with ab252435 at 1/2000 dilution followed by a ready to use Rabbit specific IHC polymer detection kit HRP/DAB (**ab209101**). Membranous staining on scattered cells in clear cell carcinoma of human kidney is observed. The section was incubated with ab252435 for 30 mins at room temperature. The immunostaining was performed on a Leica Biosystems BOND® RX instrument. Counterstained with hematoxylin.

Secondary antibody only control: Secondary antibody is a ready to use Rabbit specific IHC polymer detection kit HRP/DAB (**ab209101**).

Heat mediated antigen retrieval with Tris-EDTA buffer (pH 9.0, epitope retrieval solution2) for 20 mins.

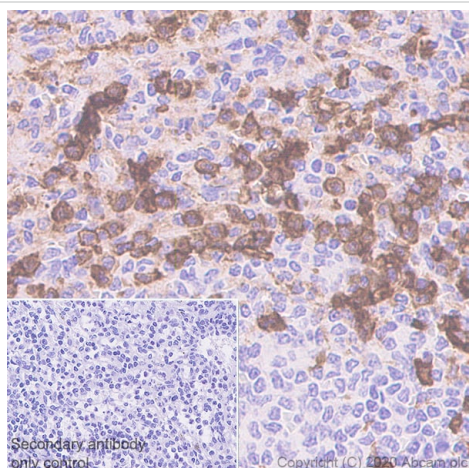


Immunohistochemistry (Formalin/PFA-fixed paraffin-embedded sections) - Anti-C5a-R antibody [EPR23278-117] (ab252435)

Immunohistochemical analysis of paraffin-embedded human lung tissue labeling C5a-R with ab252435 at 1/2000 dilution followed by a ready to use Rabbit specific IHC polymer detection kit HRP/DAB (**ab209101**). Cytoplasmic staining on macrophages in human lung (PMID: 10027407) is observed. The section was incubated with ab252435 for 30 mins at room temperature. The immunostaining was performed on a Leica Biosystems BOND® RX instrument. Counterstained with hematoxylin.

Secondary antibody only control: Secondary antibody is a ready to use Rabbit specific IHC polymer detection kit HRP/DAB (**ab209101**).

Heat mediated antigen retrieval with Tris-EDTA buffer (pH 9.0, epitope retrieval solution2) for 20 mins.




Immunohistochemistry (Formalin/PFA-fixed paraffin-embedded sections) - Anti-C5a-R antibody [EPR23278-117] (ab252435)

Immunohistochemical analysis of paraffin-embedded human spleen tissue labeling C5a-R with ab252435 at 1/2000 dilution followed by a ready to use Rabbit specific IHC polymer detection kit HRP/DAB (**ab209101**). Cytoplasmic and membranous staining on mainly neutrophils in human spleen (PMID: 22691190) is observed. The section was incubated with ab252435 for 30 mins at room temperature. The immunostaining was performed on a Leica Biosystems BOND® RX instrument. Counterstained with hematoxylin.

Secondary antibody only control: Secondary antibody is a ready to use Rabbit specific IHC polymer detection kit HRP/DAB (**ab209101**).

Heat mediated antigen retrieval with Tris-EDTA buffer (pH 9.0, epitope retrieval solution2) for 20 mins.

### Why choose a recombinant antibody?

- 

**Research with confidence**  
Consistent and reproducible results
- 

**Long-term and scalable supply**  
Recombinant technology
- 

**Success from the first experiment**  
Confirmed specificity
- 

**Ethical standards compliant**  
Animal-free production

Anti-C5a-R antibody [EPR23278-117] (ab252435)

**Please note:** All products are "FOR RESEARCH USE ONLY. NOT FOR USE IN DIAGNOSTIC PROCEDURES"

### **Our Abpromise to you: Quality guaranteed and expert technical support**

---

- Replacement or refund for products not performing as stated on the datasheet
- Valid for 12 months from date of delivery
- Response to your inquiry within 24 hours
- We provide support in Chinese, English, French, German, Japanese and Spanish
- Extensive multi-media technical resources to help you
- We investigate all quality concerns to ensure our products perform to the highest standards

If the product does not perform as described on this datasheet, we will offer a refund or replacement. For full details of the Abpromise, please visit <https://www.abcam.cn/abpromise> or contact our technical team.

### **Terms and conditions**

---

- Guarantee only valid for products bought direct from Abcam or one of our authorized distributors