

### Anti-BSD antibody ab38307

★★★★★ [2 Abreviews](#) [2 References](#) [2 图像](#)

#### 概述

产品名称	Anti-BSD抗体
描述	兔多克隆抗体to BSD
宿主	Rabbit
特异性	The antibody detects a 13 kDa protein corresponding to the molecular mass of Bsd on SDS-PAGE immunoblots of 293 cells transfected with a lentiviral vector that expresses the Bsd gene product, but is not detected in mock transfected cells.
经测试应用	<b>适用于:</b> WB, ELISA, ICC/IF
种属反应性	<b>与反应:</b> <i>Aspergillus terreus</i>
免疫原	Synthetic peptide corresponding to BSD (N terminal) conjugated to keyhole limpet haemocyanin. <i>Aspergillus terreus</i> Database link: <a href="#">P0C2P0</a>
常规说明	<p>The Life Science industry has been in the grips of a reproducibility crisis for a number of years. Abcam is leading the way in addressing this with our range of recombinant monoclonal antibodies and knockout edited cell lines for gold-standard validation. Please check that this product meets your needs before purchasing.</p> <p>If you have any questions, special requirements or concerns, please send us an inquiry and/or contact our Support team ahead of purchase. Recommended alternatives for this product can be found below, along with publications, customer reviews and Q&amp;As</p>

#### 性能

形式	Liquid
存放说明	Shipped at 4°C. Upon delivery aliquot and store at -20°C. Avoid freeze / thaw cycles.
存储溶液	Preservative: 0.05% Sodium azide Constituents: 0.1% BSA, 50% Glycerol, PBS
纯度	Immunogen affinity purified
纯化说明	This antibody was affinity purified using the N-terminal Bsd peptide (without carrier).
克隆	多克隆
同种型	IgG

应用

The Abpromise guarantee      **Abpromise™**承诺保证使用ab38307于以下的经测试应用

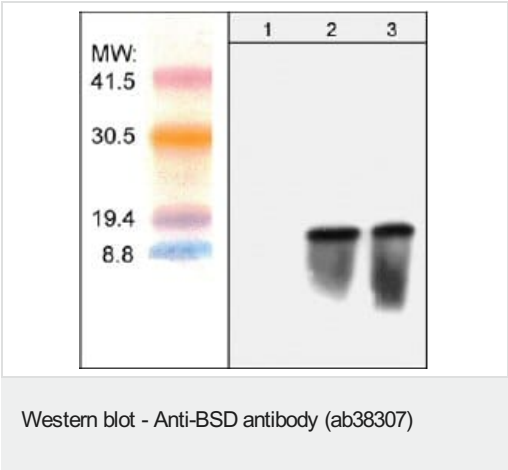
“应用说明”部分 下显示的仅为推荐的起始稀释度;实际最佳的稀释度/浓度应由使用者检定。

应用	Ab评论	说明
WB	★★★★★ (1)	1/1000. Detects a band of approximately 13 kDa.
ELISA		1/2000.
ICC/IF		1/100.

靶标

**相关性**      Retroviral vectors are commonly used for gene expression in vitro and in vivo. The structure of these vectors usually consists of one gene of interest and a selectable marker gene. Fast selection without damaging cells is a critical step for significant gene expression. Blastidicin S deaminase (Bsd) isolated from Bacillus cereus has a neutralizing action on the highly toxic antibiotic blastidicin. A variety of commercially available retroviral vectors, such lentiviral expression systems, utilize Bsd expression for selection using blastidicin. This selectable marker allows selection of stable mammalian cell lines in as little as one week.

图片



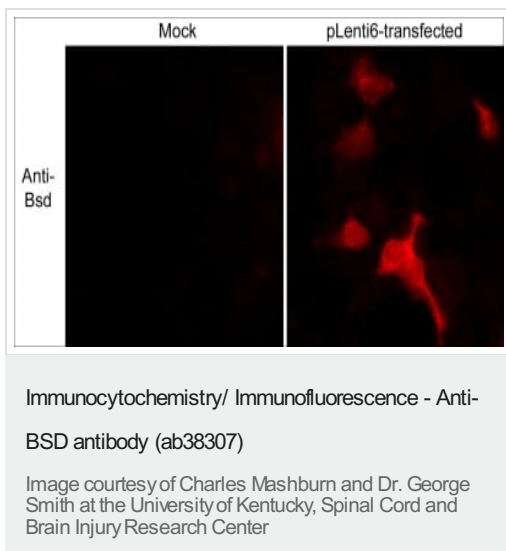
**All lanes :** Anti-BSD antibody (ab38307)

**Lane 1 :** 293 cells mock transfected

**Lanes 2-3 :** 293 cells transiently transfected with pLenti6/TR lentiviral vector

**Observed band size:** 13 kDa

Each lane was loaded with 10-20µg total protein.



ab38307, staining BSD in 293 cells mock transfected (left) and transiently transfected with pLenti6/TR lentiviral vector (right). The cells were fixed in paraformaldehyde (3.75%) for 30 min., then permeabilized in 0.2% Triton X-100 for 15 min. Blocking was done using 1% BSA for 30 min. The primary was used at 1/100 and then an appropriate secondary antibody conjugated to Texas Red was used.

**Please note:** All products are "FOR RESEARCH USE ONLY. NOT FOR USE IN DIAGNOSTIC PROCEDURES"

### Our Abpromise to you: Quality guaranteed and expert technical support

- Replacement or refund for products not performing as stated on the datasheet
- Valid for 12 months from date of delivery
- Response to your inquiry within 24 hours
- We provide support in Chinese, English, French, German, Japanese and Spanish
- Extensive multi-media technical resources to help you
- We investigate all quality concerns to ensure our products perform to the highest standards

If the product does not perform as described on this datasheet, we will offer a refund or replacement. For full details of the Abpromise, please visit <https://www.abcam.cn/abpromise> or contact our technical team.

### Terms and conditions

- Guarantee only valid for products bought direct from Abcam or one of our authorized distributors