

Anti-BRD1/BRL antibody ab71877

★★★★★ [3 Abreviews](#) [2 References](#) [3 图像](#)

概述

产品名称	Anti-BRD1/BRL抗体
描述	兔多克隆抗体to BRD1/BRL + Peregrin/BRPF1
宿主	Rabbit
经测试应用	适用于: WB, ICC/IF
种属反应性	与反应: Human 预测可用于: Mouse, Chicken, Xenopus laevis, Zebrafish 
免疫原	Synthetic peptide. This information is proprietary to Abcam and/or its suppliers.
常规说明	<p>The Life Science industry has been in the grips of a reproducibility crisis for a number of years. Abcam is leading the way in addressing this with our range of recombinant monoclonal antibodies and knockout edited cell lines for gold-standard validation. Please check that this product meets your needs before purchasing.</p> <p>If you have any questions, special requirements or concerns, please send us an inquiry and/or contact our Support team ahead of purchase. Recommended alternatives for this product can be found below, along with publications, customer reviews and Q&As</p>

性能

形式	Liquid
存放说明	Shipped at 4°C. Store at +4°C short term (1-2 weeks). Upon delivery aliquot. Store at -20°C or -80°C. Avoid freeze / thaw cycle.
存储溶液	<p>pH: 7.40</p> <p>Preservative: 0.02% Sodium azide</p> <p>Constituent: PBS</p> <p>Batches of this product that have a concentration < 1mg/ml may have BSA added as a stabilising agent. If you would like information about the formulation of a specific lot, please contact our scientific support team who will be happy to help.</p>
纯度	Immunogen affinity purified
克隆	多克隆
同种型	IgG

应用

The Abpromise guarantee **Abpromise™**承诺保证使用ab71877于以下的经测试应用

“应用说明”部分 下显示的仅为推荐的起始稀释度;实际最佳的稀释度/浓度应由使用者检定。

应用	Ab评论	说明
WB	★★★★☆ (2)	
ICC/IF		

应用说明

ICC/IF: Use at a concentration of 1 µg/ml.
WB: Use at a concentration of 1 µg/ml. Detects a band of approximately 150 kDa (predicted molecular weight: 137 kDa).

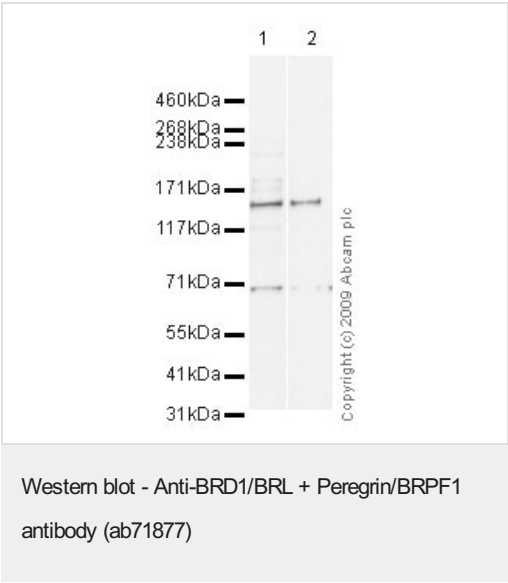
Not yet tested in other applications.
Optimal dilutions/concentrations should be determined by the end user.

靶标

细胞定位

BRD1/BRL: Nucleus. Peregrin/BRPF1: Nucleus. Cytoplasm. Localization to the nucleus depends on KAT6A, ING5 and MEAF6.

图片



All lanes : Anti-BRD1/BRL antibody (ab71877) at 1 µg/ml

Lane 1 : TE 671 (Human Rhabdomyosarcoma) Whole Cell Lysate

Lane 2 : Raji whole cell lysate (**ab30124**) at 10 µg

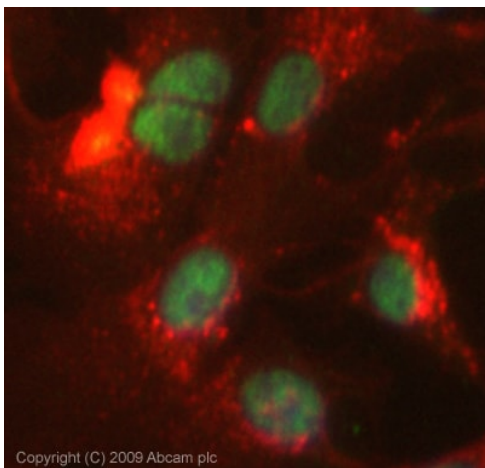
Secondary

All lanes : Goat polyclonal to Rabbit IgG - H&L - Pre-Adsorbed (HRP) at 1/3000 dilution

Performed under reducing conditions.

Predicted band size: 137 kDa

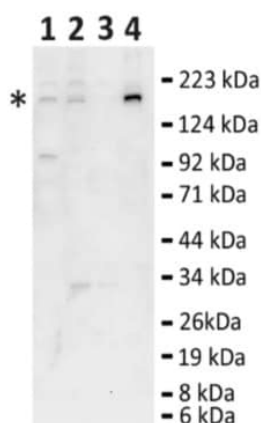
Observed band size: 150 kDa



Copyright (C) 2009 Abcam plc

Immunocytochemistry/ Immunofluorescence - Anti-BRD1/BRL + Peregrin/BRPF1 antibody (ab71877)

ICC/IF image of ab71877 stained MCF7 cells. The cells were 100% methanol fixed (5 min) and then incubated in 1%BSA / 10% normal goat serum / 0.3M glycine in 0.1% PBS-Tween for 1h to permeabilise the cells and block non-specific protein-protein interactions. The cells were then incubated with the antibody (ab71877, 1µg/ml) overnight at +4°C. The secondary antibody (green) was Alexa Fluor® 488 goat anti-rabbit IgG (H+L) used at a 1/1000 dilution for 1h. Alexa Fluor® 594 WGA was used to label plasma membranes (red) at a 1/200 dilution for 1h. DAPI was used to stain the cell nuclei (blue) at a concentration of 1.43µM. This antibody also gave a positive result in 100% methanol fixed (5 min) HeLa, Hek293 and HepG2 cells at 1µg/ml.



2010 Abcam

Western blot - Anti-BRD1/BRL + Peregrin/BRPF1 antibody (ab71877)

This image is a courtesy of Antibody Solutions Ltd

All lanes : Anti-BRD1/BRL antibody (ab71877) at 1 µg/ml

Lane 1 : Lysates prepared from Mouse testis tissue.

Lane 2 : Lysates prepared from Mouse Lung tissue.

Lane 3 : Lysates prepared from Mouse Kidney tissue.

Lane 4 : Lysates prepared from GC-1 cell line.

Lysates/proteins at 20 µg per lane.

Secondary

All lanes : HRP-conjugated pig polyclonal to rabbit IgG at 1/5000 dilution

Performed under reducing conditions.

Predicted band size: 137 kDa

Observed band size: 150 kDa

Additional bands at: 34 kDa, 92 kDa. We are unsure as to the identity of these extra bands.

Exposure time: 7 minutes

GC-1 - mouse spermatogonia cell line

Please note: All products are "FOR RESEARCH USE ONLY. NOT FOR USE IN DIAGNOSTIC PROCEDURES"

Our Abpromise to you: Quality guaranteed and expert technical support

- Replacement or refund for products not performing as stated on the datasheet
- Valid for 12 months from date of delivery
- Response to your inquiry within 24 hours
- We provide support in Chinese, English, French, German, Japanese and Spanish
- Extensive multi-media technical resources to help you
- We investigate all quality concerns to ensure our products perform to the highest standards

If the product does not perform as described on this datasheet, we will offer a refund or replacement. For full details of the Abpromise, please visit <https://www.abcam.cn/abpromise> or contact our technical team.

Terms and conditions

- Guarantee only valid for products bought direct from Abcam or one of our authorized distributors