


Anti-BRCC45/BRE antibody [EPR11858] ab177960

敲除验证
重组
RabMAb

2 References 6 图像

概述

产品名称	Anti-BRCC45/BRE抗体[EPR11858]
描述	兔单克隆抗体[EPR11858] to BRCC45/BRE
宿主	Rabbit
经测试应用	适用于: WB, ICC/IF, IHC-P 不适用于: Flow Cyt or IP
种属反应性	与反应: Human 预测可用于: Mouse, Rat 
免疫原	Synthetic peptide within Human BRCC45/BRE aa 1-100. The exact sequence is proprietary. Database link: Q9NXR7
阳性对照	WB: HeLa, SH-SY5Y, Daudi and Raji cell lysates; Fetal brain and human placenta tissue lysates. IHC-P: Human lung adenocarcinoma and pancreas tissue. ICC/IF: MCF-7 cells.
常规说明	<p>This product is a recombinant monoclonal antibody, which offers several advantages including:</p> <ul style="list-style-type: none"> - High batch-to-batch consistency and reproducibility - Improved sensitivity and specificity - Long-term security of supply - Animal-free production <p>For more information see here.</p> <p>Our RabMAb[®] technology is a patented hybridoma-based technology for making rabbit monoclonal antibodies. For details on our patents, please refer to RabMAb[®] patents.</p>

性能

形式	Liquid
存放说明	Shipped at 4°C. Store at +4°C short term (1-2 weeks). Upon delivery aliquot. Store at -20°C long term. Avoid freeze / thaw cycle.
存储溶液	pH: 7.20 Preservative: 0.01% Sodium azide Constituents: 9% PBS, 40% Glycerol (glycerin, glycerine), 0.05% BSA, 50% Tissue culture supernatant
纯度	Tissue culture supernatant

克隆 单克隆
 克隆编号 EPR11858
 同种型 IgG

应用

The Abpromise guarantee **Abpromise™** 承诺保证使用 ab177960 于以下的经测试应用

“应用说明”部分 下显示的仅为推荐的起始稀释度；实际最佳的稀释度/浓度应由使用者检定。

应用	Ab评论	说明
WB		1/1000 - 1/10000. Predicted molecular weight: 44 kDa.
ICC/IF		1/50 - 1/100.
IHC-P		1/50 - 1/100. Perform heat mediated antigen retrieval before commencing with IHC staining protocol.

应用说明 Is unsuitable for Flow Cyt or IP.

靶标

功能 Component of the BRCA1-A complex, a complex that specifically recognizes 'Lys-63'-linked ubiquitinated histones H2A and H2AX at DNA lesions sites, leading to target the BRCA1-BARD1 heterodimer to sites of DNA damage at double-strand breaks (DSBs). The BRCA1-A complex also possesses deubiquitinase activity that specifically removes 'Lys-63'-linked ubiquitin on histones H2A and H2AX. In the BRCA1-A complex, it acts as an adapter that bridges the interaction between BABAM1/NBA1 and the rest of the complex, thereby being required for the complex integrity and modulating the E3 ubiquitin ligase activity of the BRCA1-BARD1 heterodimer. Probably also plays a role as a component of the BRISC complex, a multiprotein complex that specifically cleaves 'Lys-63'-linked ubiquitin. May play a role in homeostasis or cellular differentiation in cells of neural, epithelial and germline origins. May also act as a death receptor-associated anti-apoptotic protein, which inhibits the mitochondrial apoptotic pathway. May regulate TNF-alpha signaling through its interactions with TNFRSF 1A; however these effects may be indirect.

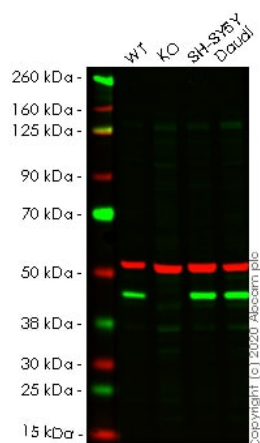
组织特异性 Expressed in all cell lines examined. Highly expressed in placenta.

序列相似性 Belongs to the BRE family.

结构域 Contains 2 ubiquitin-conjugating enzyme family-like (UEV-like) regions. These regions lack the critical Cys residues required for ubiquitination but retain the ability to bind ubiquitin.

细胞定位 Cytoplasm. Nucleus. Localizes at sites of DNA damage at double-strand breaks.

图片



Western blot - Anti-BRCC45/BRE antibody [EPR11858] (ab177960)

All lanes : Anti-BRCC45/BRE antibody [EPR11858] (ab177960) at 1/1000 dilution

Lane 1 : Wild-type HeLa cell lysate

Lane 2 : BRCC45/BRE knockout HeLa cell lysate

Lane 3 : SH-SY5Y cell lysate

Lane 4 : Daudi cell lysate

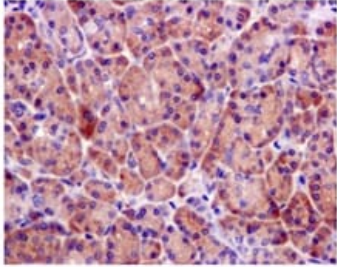
Lysates/proteins at 20 µg per lane.

Performed under reducing conditions.

Predicted band size: 44 kDa

Lanes 1-4: Merged signal (red and green). Green - ab177960 observed at 44 kDa. Red - loading control **ab7291** observed at 50 kDa.

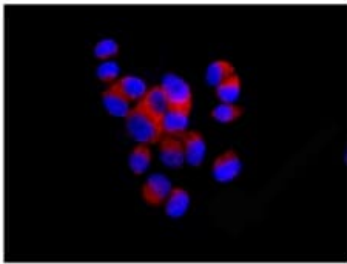
ab177960 Recombinant Anti-BRE antibody [EPR11858] was shown to specifically react with BRE in wild-type HeLa cells. Loss of signal was observed when knockout cell line **ab264928** (knockout cell lysate **ab257861**) was used. Wild-type and BRE knockout samples were subjected to SDS-PAGE. ab177960 and Anti-alpha Tubulin antibody [DM1A] - Loading Control (**ab7291**) were incubated overnight at 4°C at 1 in 1000 dilution and 1 in 20000 dilution respectively. Blots were developed with Goat anti-Rabbit IgG H&L (IRDye® 800CW) preadsorbed (**ab216773**) and Goat anti-Mouse IgG H&L (IRDye® 680RD) preadsorbed (**ab216776**) secondary antibodies at 1 in 20000 dilution for 1 hour at room temperature before imaging.



Immunohistochemistry (Formalin/PFA-fixed paraffin-embedded sections) - Anti-BRCC45/BRE antibody [EPR11858] (ab177960)

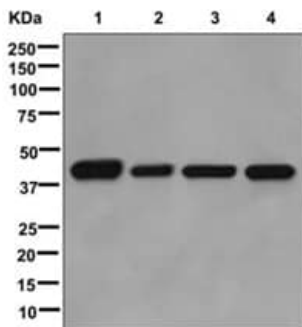
Immunohistochemical analysis of Human pancreas tissue labeling BRCC45/BRE using ab177960 at 1/50 dilution.

Perform heat mediated antigen retrieval before commencing with IHC staining protocol.



Immunocytochemistry/ Immunofluorescence - Anti-BRCC45/BRE antibody [EPR11858] (ab177960)

Immunofluorescence analysis of MCF-7 cells labeling BRCC45/BRE using ab177960 at 1/50 dilution.



Western blot - Anti-BRCC45/BRE antibody [EPR11858] (ab177960)

All lanes : Anti-BRCC45/BRE antibody [EPR11858] (ab177960) at 1/1000 dilution

Lane 1 : fetal brain lysate

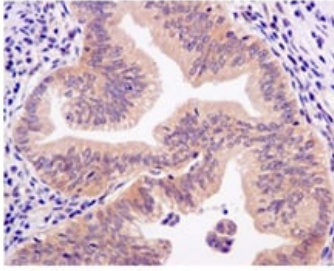
Lane 2 : Human placenta lysate

Lane 3 : HeLa cell lysate

Lane 4 : Raji cell lysate

Lysates/proteins at 10 μ g per lane.

Predicted band size: 44 kDa



Immunohistochemistry (Formalin/PFA-fixed paraffin-embedded sections) - Anti-BRCC45/BRE antibody [EPR11858] (ab177960)

Immunohistochemical analysis of Human lung adenocarcinoma tissue labeling BRCC45/BRE using ab177960 at 1/50 dilution.

Perform heat mediated antigen retrieval before commencing with IHC staining protocol.

Why choose a recombinant antibody?



Anti-BRCC45/BRE antibody [EPR11858] (ab177960)

Please note: All products are "FOR RESEARCH USE ONLY. NOT FOR USE IN DIAGNOSTIC PROCEDURES"

Our Abpromise to you: Quality guaranteed and expert technical support

- Replacement or refund for products not performing as stated on the datasheet
- Valid for 12 months from date of delivery
- Response to your inquiry within 24 hours
- We provide support in Chinese, English, French, German, Japanese and Spanish
- Extensive multi-media technical resources to help you
- We investigate all quality concerns to ensure our products perform to the highest standards

If the product does not perform as described on this datasheet, we will offer a refund or replacement. For full details of the Abpromise, please visit <https://www.abcam.cn/abpromise> or contact our technical team.

Terms and conditions

- Guarantee only valid for products bought direct from Abcam or one of our authorized distributors