


### Anti-BRCC36 antibody [EPR4366] ab108411

敲除验证 重组 RabMAb

[4 References](#) [4 图像](#)

#### 概述

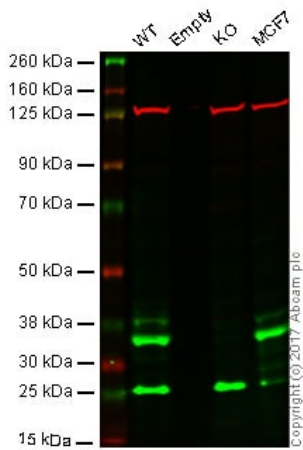
产品名称	Anti-BRCC36抗体[EPR4366]
描述	兔单克隆抗体[EPR4366] to BRCC36
宿主	Rabbit
经测试应用	适用于: WB, Flow Cyt (Intra) 不适用于: ICC/IF or IHC-P
种属反应性	与反应: Mouse, Human 预测可用于: Rat 
免疫原	Synthetic peptide. This information is proprietary to Abcam and/or its suppliers.
阳性对照	WB: HeLa, MCF7, SKBR-3, HAP1 and 293T cell lysates Flow Cyt (intra): permeabilized HeLa cells
常规说明	This product is a recombinant monoclonal antibody, which offers several advantages including: <ul style="list-style-type: none"><li>- High batch-to-batch consistency and reproducibility</li><li>- Improved sensitivity and specificity</li><li>- Long-term security of supply</li><li>- Animal-free production</li></ul> For more information <a href="#">see here</a> . Our RabMAb <sup>®</sup> technology is a patented hybridoma-based technology for making rabbit monoclonal antibodies. For details on our patents, please refer to <a href="#">RabMAb<sup>®</sup> patents</a> .

#### 性能

形式	Liquid
存放说明	Shipped at 4°C. Store at -20°C. Stable for 12 months at -20°C.
存储溶液	pH: 7.20 Preservative: 0.05% Sodium azide Constituents: 0.1% BSA, 40% Glycerol (glycerin, glycerine), 9.85% Tris glycine, 50% Tissue culture supernatant
纯度	Tissue culture supernatant
克隆	单克隆



图片



Western blot - Anti-BRCC36 antibody [EPR4366] (ab108411)

**Lane 1:** Wild type HAP1 whole cell lysate (40 µg)

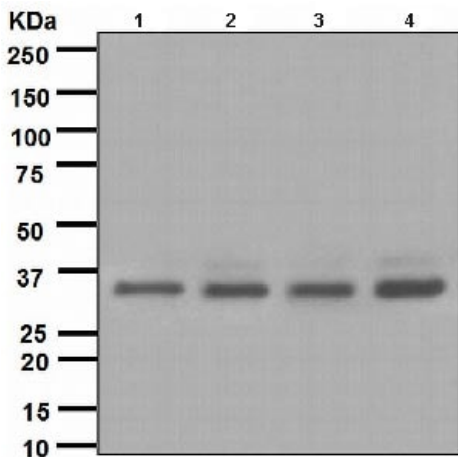
**Lane 2:** Empty Lane

**Lane 3:** BRCC3 knockout HAP1 whole cell lysate (40 µg)

**Lane 4:** MCF7 whole cell lysate (40 µg)

**Lanes 1 - 4:** Merged signal (red and green). Green - ab108411 observed at 36 kDa. Red - loading control, **ab18058**, observed at 130 kDa.

ab108411 was shown to recognize empty when empty knockout samples were used, along with additional cross-reactive bands. Wild-type and empty knockout samples were subjected to SDS-PAGE. Ab108411 and **ab18058** (Mouse anti Vinculin loading control) were incubated overnight at 4°C at 10000 dilution and 1/10000 dilution respectively. Blots were developed with Goat anti-Rabbit IgG H&L (IRDye® 800CW) preabsorbed **ab216773** and Goat anti-Mouse IgG H&L (IRDye® 680RD) preabsorbed **ab216776** secondary antibodies at 1/10000 dilution for 1 hour at room temperature before imaging.



Western blot - Anti-BRCC36 antibody [EPR4366] (ab108411)

**All lanes :** Anti-BRCC36 antibody [EPR4366] (ab108411) at 1/10000 dilution

**Lane 1 :** HeLa cell lysate

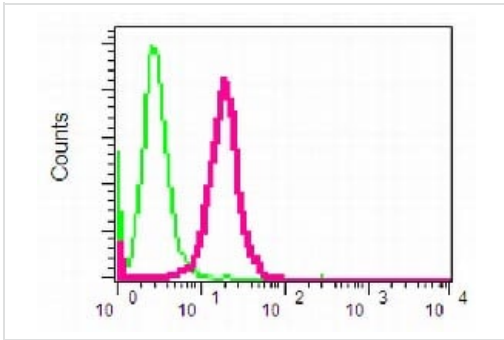
**Lane 2 :** MCF7 cell lysate

**Lane 3 :** SKBR-3 cell lysate

**Lane 4 :** 293T cell lysate

Lysates/proteins at 10 µg per lane.

**Predicted band size:** 36 kDa



Intracellular flow cytometric analysis of BRCC36 in permeabilized HeLa cells, using ab108411 at a 1/100 dilution (red) or a Rabbit IgG (negative) (green).

Flow Cytometry (Intracellular) - Anti-BRCC36 antibody [EPR4366] (ab108411)

Why choose a recombinant antibody?

 <p><b>Research with confidence</b> Consistent and reproducible results</p>	 <p><b>Long-term and scalable supply</b> Recombinant technology</p>
 <p><b>Success from the first experiment</b> Confirmed specificity</p>	 <p><b>Ethical standards compliant</b> Animal-free production</p>

Anti-BRCC36 antibody [EPR4366] (ab108411)

**Please note:** All products are "FOR RESEARCH USE ONLY. NOT FOR USE IN DIAGNOSTIC PROCEDURES"

### Our Abpromise to you: Quality guaranteed and expert technical support

- Replacement or refund for products not performing as stated on the datasheet
- Valid for 12 months from date of delivery
- Response to your inquiry within 24 hours
- We provide support in Chinese, English, French, German, Japanese and Spanish
- Extensive multi-media technical resources to help you
- We investigate all quality concerns to ensure our products perform to the highest standards

If the product does not perform as described on this datasheet, we will offer a refund or replacement. For full details of the Abpromise, please visit <https://www.abcam.cn/abpromise> or contact our technical team.

### Terms and conditions

- Guarantee only valid for products bought direct from Abcam or one of our authorized distributors