


Anti-BRCA2 antibody ab123491

★★★★★ [3 Abreviews](#) [16 References](#) [3 图像](#)

概述

产品名称	Anti-BRCA2抗体
描述	兔多克隆抗体to BRCA2
宿主	Rabbit
经测试应用	适用于: WB, IP
种属反应性	与反应: Human 预测可用于: Chimpanzee, Rhesus monkey, Gorilla, Orangutan 
免疫原	Synthetic peptide, corresponding to a region within amino acids 450-500 of Human BRCA2 using the numbering given in entry NP_000050.1.
阳性对照	Whole cell lysate from 293T, HeLa and Jurkat cells
常规说明	<p>The Life Science industry has been in the grips of a reproducibility crisis for a number of years. Abcam is leading the way in addressing this with our range of recombinant monoclonal antibodies and knockout edited cell lines for gold-standard validation. Please check that this product meets your needs before purchasing.</p> <p>If you have any questions, special requirements or concerns, please send us an inquiry and/or contact our Support team ahead of purchase. Recommended alternatives for this product can be found below, along with publications, customer reviews and Q&As</p>

性能

形式	Liquid
存放说明	Shipped at 4°C. Upon delivery aliquot and store at -20°C. Avoid freeze / thaw cycles.
存储溶液	pH: 7 Preservative: 0.09% Sodium azide Constituent: 99% Tris citrate/phosphate
纯度	pH 7 to 8 Immunogen affinity purified
克隆	多克隆
同种型	IgG

应用

The Abpromise guarantee

Abpromise™ 承诺保证使用 ab123491 于以下的经测试应用

“应用说明”部分 下显示的仅为推荐的起始稀释度;实际最佳的稀释度/浓度应由使用者检定。

应用	Ab评论	说明
WB	★★★★☆ (2)	1/2000 - 1/10000. Predicted molecular weight: 384 kDa.
IP		Use at 2-10 µg/mg of lysate.

靶标

功能

Involved in double-strand break repair and/or homologous recombination. Binds RAD51 and potentiates recombinational DNA repair by promoting assembly of RAD51 onto single-stranded DNA (ssDNA). Acts by targeting RAD51 to ssDNA over double-stranded DNA, enabling RAD51 to displace replication protein-A (RPA) from ssDNA and stabilizing RAD51-ssDNA filaments by blocking ATP hydrolysis. May participate in S phase checkpoint activation. Binds selectively to ssDNA, and to ssDNA in tailed duplexes and replication fork structures.

组织特异性

Highest levels of expression in breast and thymus, with slightly lower levels in lung, ovary and spleen.

疾病相关

Defects in BRCA2 are a cause of susceptibility to breast cancer (BC) [MIM:114480]. A common malignancy originating from breast epithelial tissue. Breast neoplasms can be distinguished by their histologic pattern. Invasive ductal carcinoma is by far the most common type. Breast cancer is etiologically and genetically heterogeneous. Important genetic factors have been indicated by familial occurrence and bilateral involvement. Mutations at more than one locus can be involved in different families or even in the same case.

Defects in BRCA2 are the cause of pancreatic cancer type 2 (PNCA2) [MIM:613347]. It is a malignant neoplasm of the pancreas. Tumors can arise from both the exocrine and endocrine portions of the pancreas, but 95% of them develop from the exocrine portion, including the ductal epithelium, acinar cells, connective tissue, and lymphatic tissue.

Defects in BRCA2 are a cause of susceptibility to breast-ovarian cancer familial type 2 (BROVCA2) [MIM:612555]. A condition associated with familial predisposition to cancer of the breast and ovaries. Characteristic features in affected families are an early age of onset of breast cancer (often before age 50), increased chance of bilateral cancers (cancer that develop in both breasts, or both ovaries, independently), frequent occurrence of breast cancer among men, increased incidence of tumors of other specific organs, such as the prostate.

Defects in BRCA2 are the cause of Fanconi anemia complementation group D type 1 (FANCD1) [MIM:605724]. It is a disorder affecting all bone marrow elements and resulting in anemia, leukopenia and thrombopenia. It is associated with cardiac, renal and limb malformations, dermal pigmentary changes, and a predisposition to the development of malignancies. At the cellular level it is associated with hypersensitivity to DNA-damaging agents, chromosomal instability (increased chromosome breakage) and defective DNA repair.

Defects in BRCA2 are a cause of glioma type 3 (GLM3) [MIM:613029]. Gliomas are benign or malignant central nervous system neoplasms derived from glial cells. They comprise astrocytomas and glioblastoma multiforme that are derived from astrocytes, oligodendrogliomas derived from oligodendrocytes and ependymomas derived from ependymocytes.

序列相似性

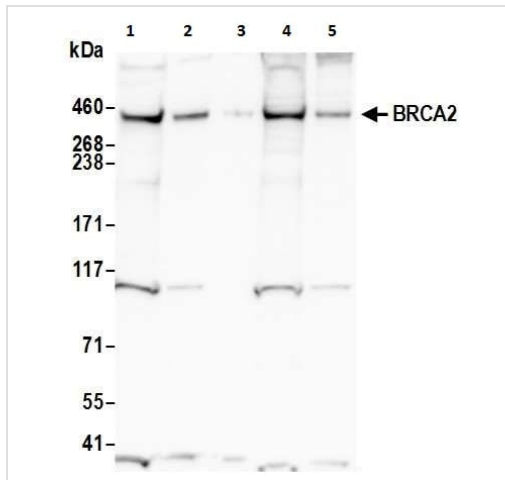
Contains 8 BRCA2 repeats.

翻译后修饰

Phosphorylated by ATM upon irradiation-induced DNA damage.

Ubiquitinated in the absence of DNA damage; this does not lead to proteasomal degradation. In contrast, ubiquitination in response to DNA damage leads to proteasomal degradation.

图片



Western blot - Anti-BRCA2 antibody (ab123491)

All lanes : Anti-BRCA2 antibody (ab123491) at 0.1 $\mu\text{g/ml}$

Lane 1 : 293T whole cell lysate at 50 μg

Lane 2 : 293T whole cell lysate at 15 μg

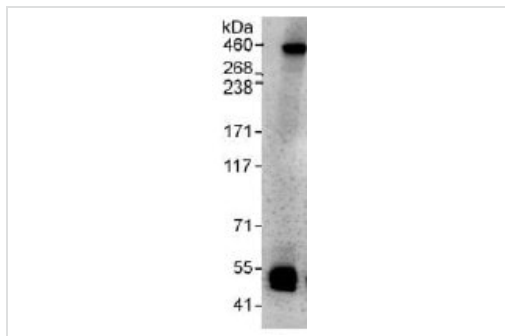
Lane 3 : 293T whole cell lysate at 5 μg

Lane 5 : HeLa whole cell lysate at 50 μg

Lane 6 : HeLa whole cell lysate at 15 μg

Predicted band size: 384 kDa

Exposure time: 30 seconds

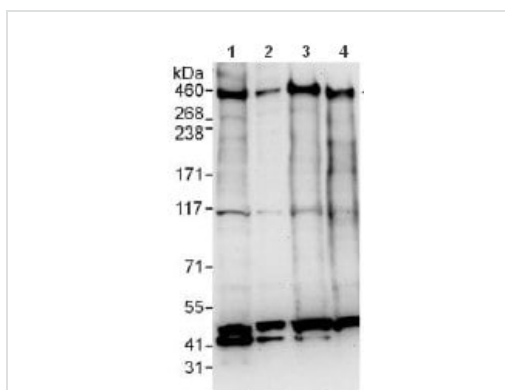


Immunoprecipitation - Anti-BRCA2 antibody (ab123491)

Detection of Human BRCA2 by Immunoprecipitation from HeLa whole cell lysate (1 mg for IP, 20% of IP loaded), using ab123491 at 6 $\mu\text{g/mg}$ lysate.

Subsequent Western blot detection used ab123491 at 1 $\mu\text{g/ml}$.

Detection: Chemiluminescence with an exposure time of 10 seconds.



Western blot - Anti-BRCA2 antibody (ab123491)

All lanes : Anti-BRCA2 antibody (ab123491) at 0.1 $\mu\text{g/ml}$

Lane 1 : Whole cell lysate from HeLa at 50 $\mu\text{g/ml}$

Lane 2 : Whole cell lysate from HeLa at 15 $\mu\text{g/ml}$

Lane 3 : Whole cell lysate from 293T at 50 $\mu\text{g/ml}$

Lane 4 : Whole cell lysate from Jurkat at 50 $\mu\text{g/ml}$

Developed using the ECL technique.

Predicted band size: 384 kDa

Exposure time: 10 minutes

Please note: All products are "FOR RESEARCH USE ONLY. NOT FOR USE IN DIAGNOSTIC PROCEDURES"

Our Abpromise to you: Quality guaranteed and expert technical support

- Replacement or refund for products not performing as stated on the datasheet
- Valid for 12 months from date of delivery
- Response to your inquiry within 24 hours

- We provide support in Chinese, English, French, German, Japanese and Spanish
- Extensive multi-media technical resources to help you
- We investigate all quality concerns to ensure our products perform to the highest standards

If the product does not perform as described on this datasheet, we will offer a refund or replacement. For full details of the Abpromise, please visit <https://www.abcam.cn/abpromise> or contact our technical team.

Terms and conditions

- Guarantee only valid for products bought direct from Abcam or one of our authorized distributors